

General Notes
 DO NOT SCALE FOR PURPOSES OTHER THAN FOR THE PLANNING APPLICATION. All dimensions must be checked on site, errors are to be reported.

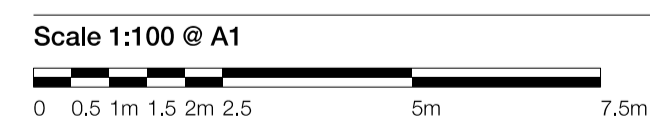
All illustrated material is subject to copyright. Unless otherwise agreed in writing, all rights to use this document are subject to payment of Architect's charges. This document may only be used for the express purpose and project for which it has been created and delivered, as notified in writing by the Architect. This document may not be otherwise used or copied. Any unauthorised use of this document is at the user's sole risk and without limiting the Architect's rights the user releases and indemnifies the Architect from and against all loss so arising.

Contractors must ensure that cross referenced drawings and specifications noted on these drawings are checked on a regular basis to ensure that the latest revisions are used.

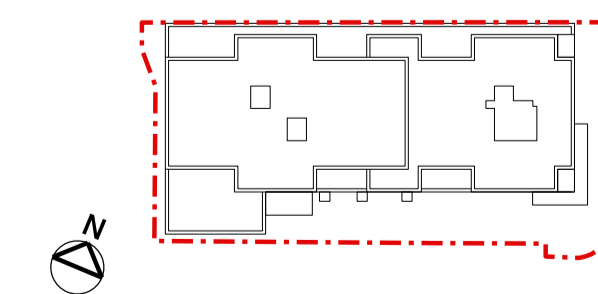
Drawing Notes

Colour Code

- Application boundary
- Hedgerow
- Earth mounded native woodland planting
- Biodiverse roof
- Stone seating
- Proposed tree planting
- Groundcover planting
- Extensive green roof
- Resinbound paving
- Permeable Paving
- Stone boulders
- Paving Type 2
- Tree trunks for amenity and biodiversity
- Paving Type 1
- Cycle stand
- Reused gabion wall
- Existing tree planting



Key Plan



Title
 Composite landscape plan
 Multi-level

Project
 Hickman Avenue

Scale
 1:100 @ A1 L

Issue Record	By	Chk	Date
PL5 For Planning	CO	IT	12.03.2025
PL4 For Planning	CO	IT	12.03.2025
PL3 For Planning	DF	IT	29.01.2025
PL2 For Planning	CO	IT	22.07.2024
PL1 For Planning	CO	IT	28.06.2024

Drawing Number
 652-PTA-ZZ-XX-DR-L-2304 **Revision**
 PL5

Status
 S4 Suitable for stage approval

Patel Taylor
 48 Rawstorne Street
 London EC1V 7ND
 T +44 (0)20 7278 2323
 www.pateltaylor.co.uk