

215-229 WOOD STREET

215-229 WOOD STREET,
LONDON, E17 3NT

WASTE MANAGEMENT STRATEGY
PREPARED BY FRONT. ARCHITECTURE LTD

JANUARY 2025
ISSUE V3

FRONT.

0.0

CONTENTS.

01.0	Information
1.1	The Purpose of this document.
02.0	Residential
2.1	Existing Refuse Arrangement.
2.2	Residential Photos.
2.3	Proposed Refuse Arrangement.
03.0	Commercial
3.1	Refuse Arrangement.
04.0	Conclusion

- 01 -
INTRODUCTION

1.1 - The Purpose of this document



1.0 INTRODUCTION.

1.1 - The Purpose Of This Document

This Waste Management Strategy has been prepared by FRONT. Architecture. The purpose of this document is to explain the waste management principles of 215-229 Wood Street, Walthamstow, London, E17 3NT. This document should be read in conjunction with the application drawing pack.



- 02 - RESIDENTIAL

2.1 - Existing Residential Arrangement.
2.2 - Proposed Residential Arrangement.



2.0 RESIDENTIAL.

2.1 - Existing Residential Arrangement.

The existing residential refuse is located externally to the north of the building and provides a maximum of 12,100L of refuse which is currently uncovered. There are 11no. refuse bins which compromise of 4no. green bins (recycling), 6no. black bins (all other rubbish) and 1no. magenta bin (general waste).

The existing recycling bins indicate the objects that are to be thrown in these bins such as; plastics, paper, tins cans and trays and glass. This is highlighted on the Waltham Forrest Council.

<https://www.walthamforest.gov.uk/rubbish-and-recycling/household-bin-collections/what-goes-each-bin>



EXISTING GROUND FLOOR PLAN
1:100 @ A1

RESIDENTIAL UNITS
LOCATION OF EXISTING UNCOVERED RESIDENTIAL UNITS. 10no. EURO BINS PROVIDING MAX 12,800L OF REFUSE STORAGE. THE BINS ARE COLLECTED BY THE LOCAL AUTHORITY (WALTHAM FORREST) ON A WEEKLY BASIS. FURTHER DETAILS OF THESE COLLECTION DATES FOR EACH RESIDENTIAL UNIT CAN BE FOUND ON THE WALTHAM FORREST COUNCIL BELOW.

SOURCE:
<https://www.walthamforest.gov.uk/rubbish-and-recycling/household-bin-collections/check-your-collection-days>

COMMERCIAL UNITS
EXISTING COMMERCIAL UNITS TO RETAIN THEIR EXISTING ARRANGEMENT. REFUSE STORAGE LOCATED WITHIN THE COMMERCIAL UNITS. COMMERCIAL UNITS REFUSE IS PICKED UP EVERY WEEKDAY BY A PRIVATE COLLECTION.

2.0 RESIDENTIAL.

2.2 - Existing Refuse Photos.

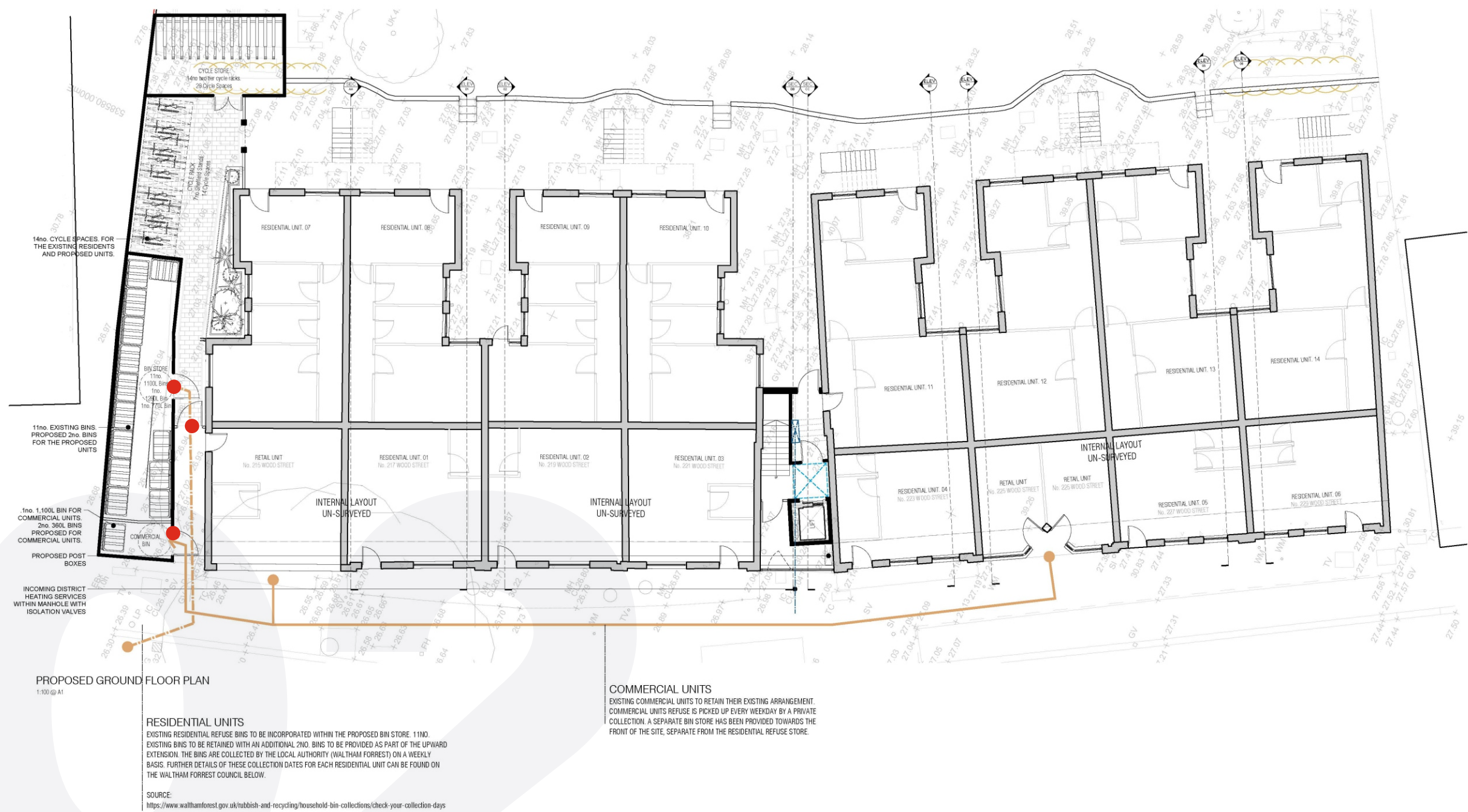


2.0 RESIDENTIAL.

2.3 - Proposed Refuse Arrangements.

The proposed scheme looks to retain the existing refuse location and the 11no. bins and provide an additional 1no. 1,280L bin and 1no. 770L bin within a covered and secured by a FOB entry system (noted ●) enclosure. In total this provides 13no. bins, equating to 14,150L of refuse storage for the existing and proposed residents.

Residential bins are collected via the local council (Waltham Forrest) on a weekly basis. Further details of collection days can be found on the Waltham Forrest website. Source: <https://www.walthamforest.gov.uk/rubbish-and-recycling/household-bin-collections/check-your-collection-days>



- 03 -
COMMERCIAL

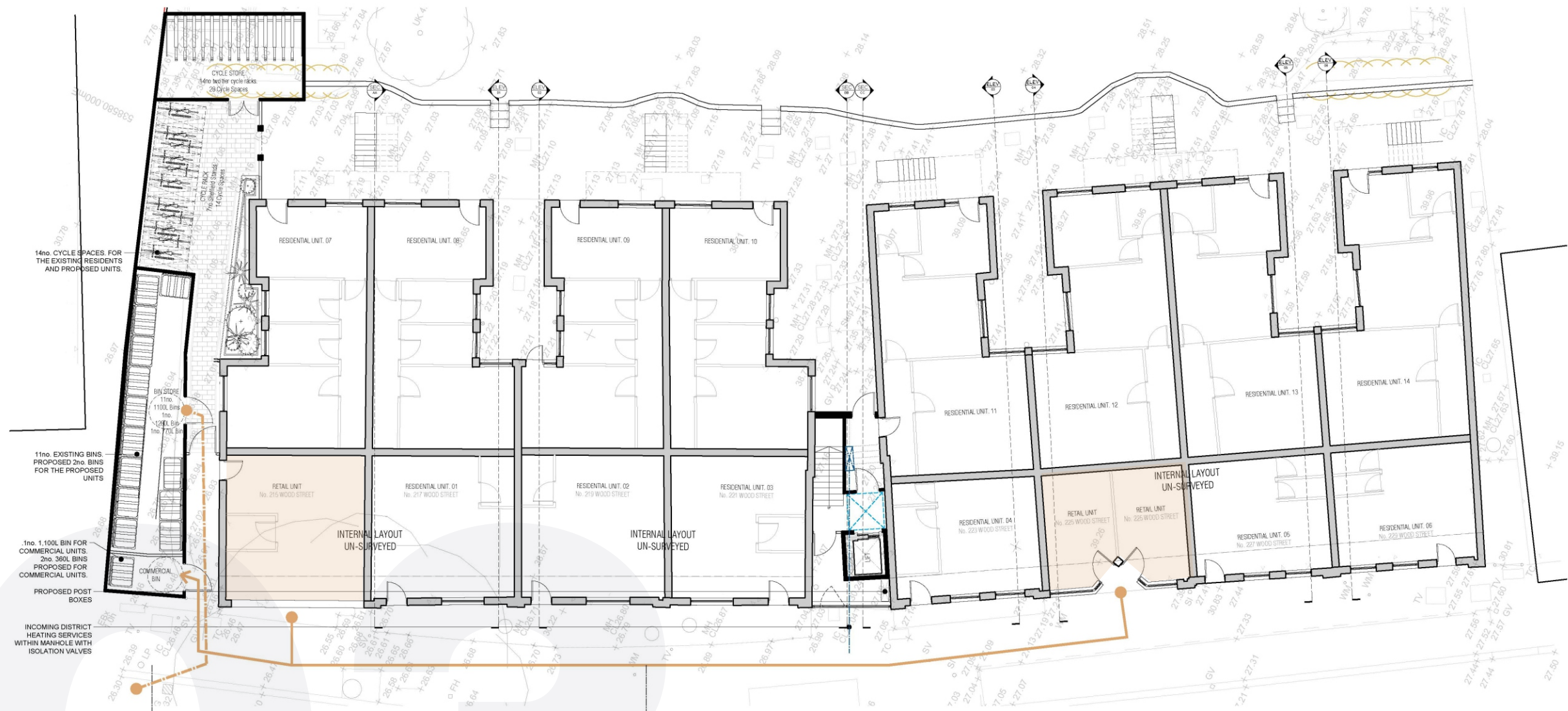
3.1 - Refuse Arrangement.



3.0 COMMERCIAL.

3.1 - Refuse Arrangement.

The commercial refuse is to remain as per the existing arrangement. The proposed bin store provides a separated commercial store and creates a secure location for the existing refuse. The refuse is collected on a daily basis, unless a prior arrangement has been made.



PROPOSED GROUND FLOOR PLAN
1:100 @ A1

RESIDENTIAL UNITS
EXISTING RESIDENTIAL REFUSE BINS TO BE INCORPORATED WITHIN THE PROPOSED BIN STORE. 11NO. EXISTING BINS TO BE RETAINED WITH AN ADDITIONAL 2NO. BINS TO BE PROVIDED AS PART OF THE UPWARD EXTENSION. THE BINS ARE COLLECTED BY THE LOCAL AUTHORITY (WALTHAM FOREST) ON A WEEKLY BASIS. FURTHER DETAILS OF THESE COLLECTION DATES FOR EACH RESIDENTIAL UNIT CAN BE FOUND ON THE WALTHAM FOREST COUNCIL BELOW.
SOURCE:
<https://www.walthamforest.gov.uk/rubbish-and-recycling/household-bin-collections/check-your-collection-days>

COMMERCIAL UNITS
EXISTING COMMERCIAL UNITS TO RETAIN THEIR EXISTING ARRANGEMENT. COMMERCIAL UNITS REFUSE IS PICKED UP EVERY WEEKDAY BY A PRIVATE COLLECTION. A SEPARATE BIN STORE HAS BEEN PROVIDED TOWARDS THE FRONT OF THE SITE, SEPARATE FROM THE RESIDENTIAL REFUSE STORE.

- 04 -
CONCLUSION

4.1 - Conclusion



4.0

CONCLUSION

4.1 - Conclusion.

In conclusion, the implementation of a new covered and enclosed refuse storage which provides additional security to the existing site is a positive for both the existing residents as well as the proposed. A further detailed waste management plan is to be submitted following a suitably worded condition.



END OF DOCUMENT

PREPARED BY FRONT. ARCHITECTURE LTD

JANUARY 2025
ISSUE V1

FRONT.