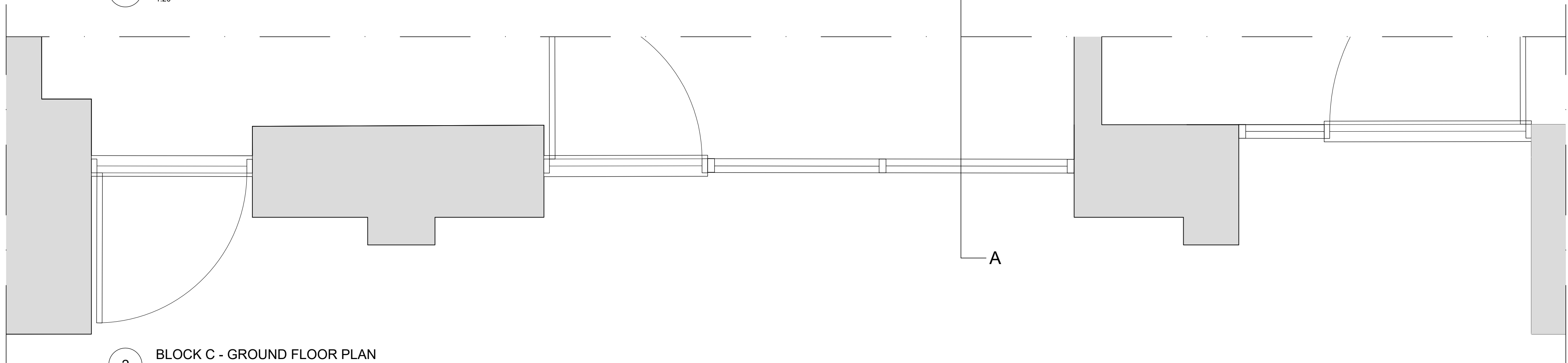
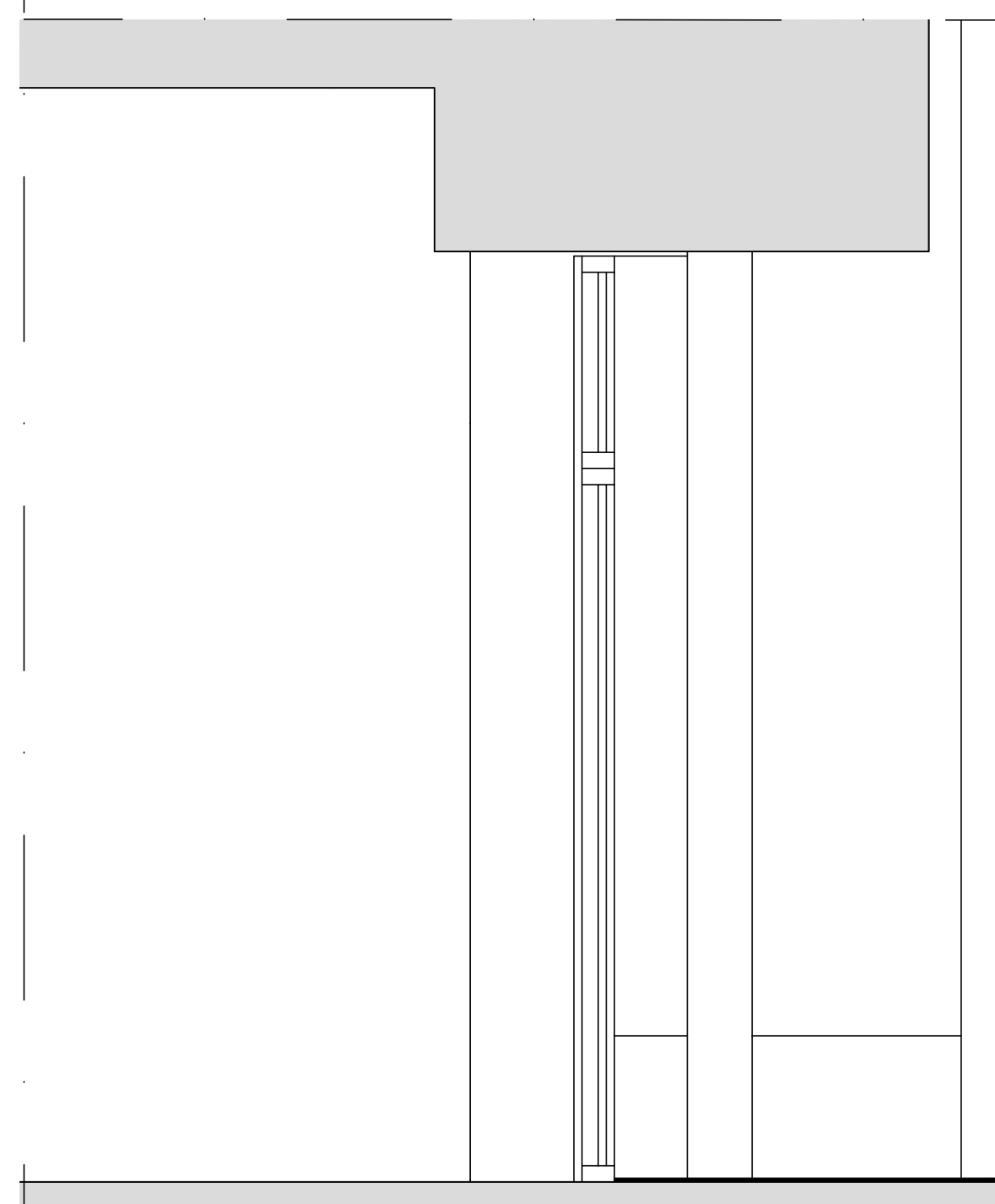
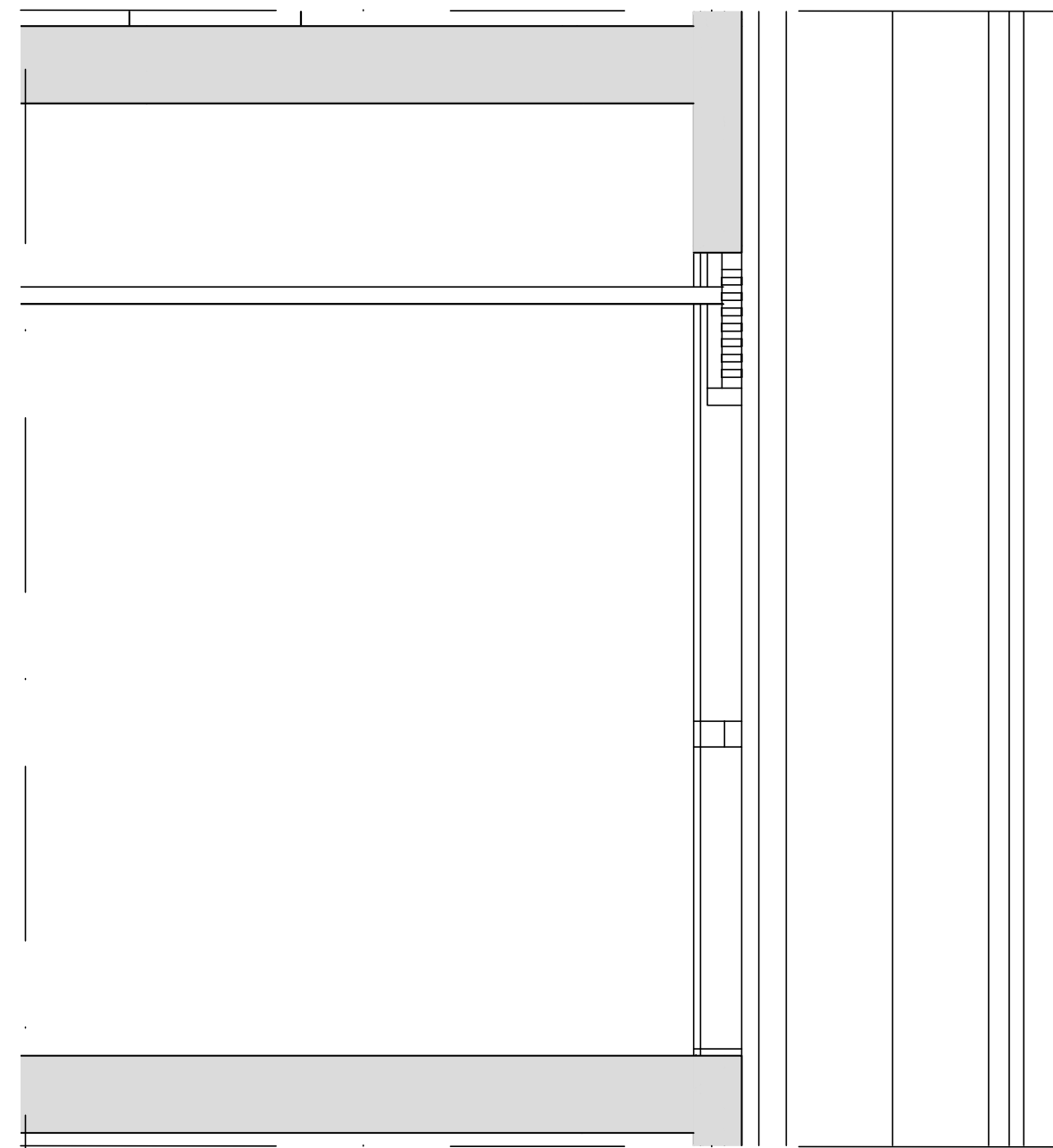
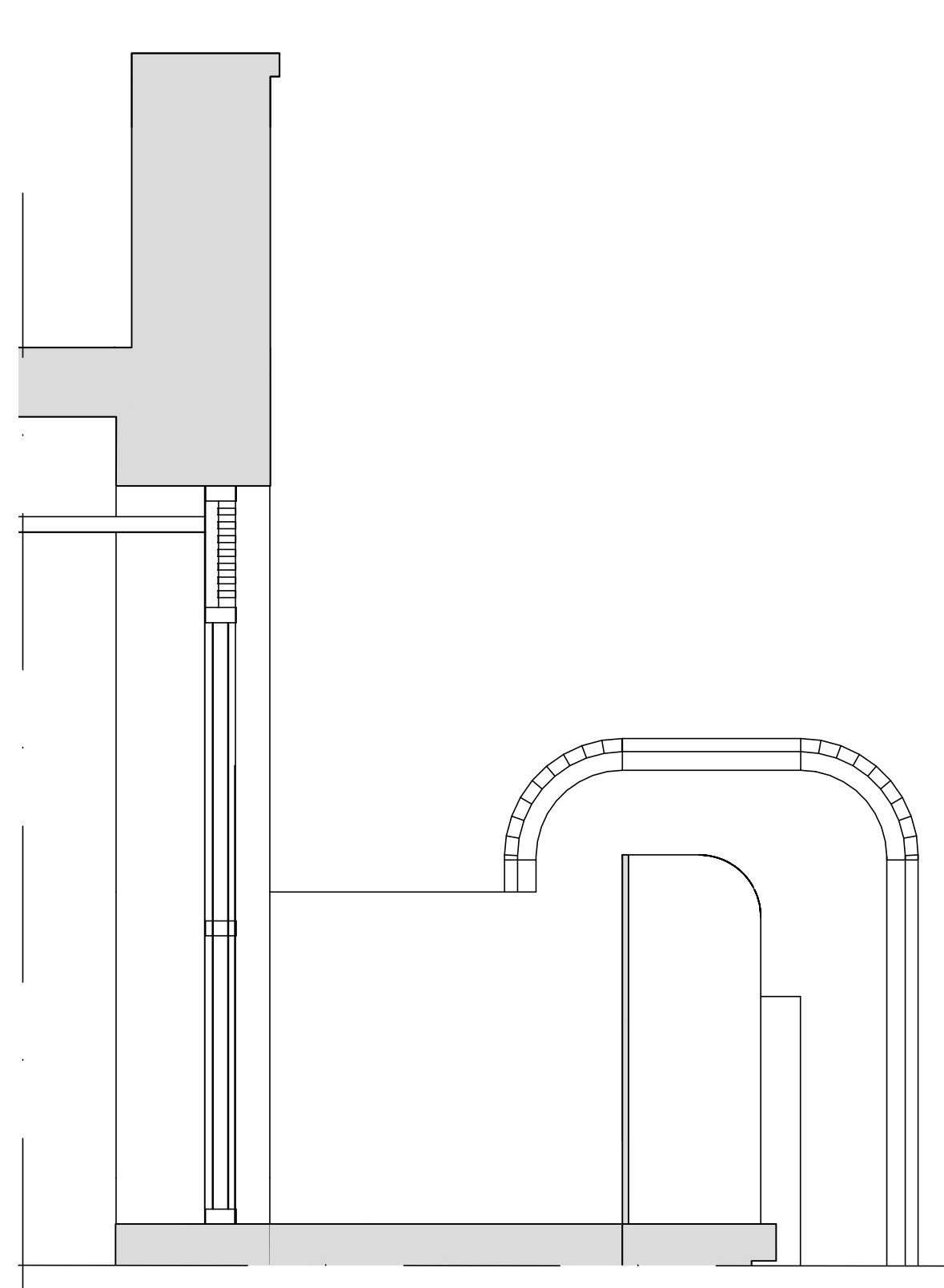


1 BLOCK C - HIGH ROAD ELEVATION - BAY STUDY
1:20

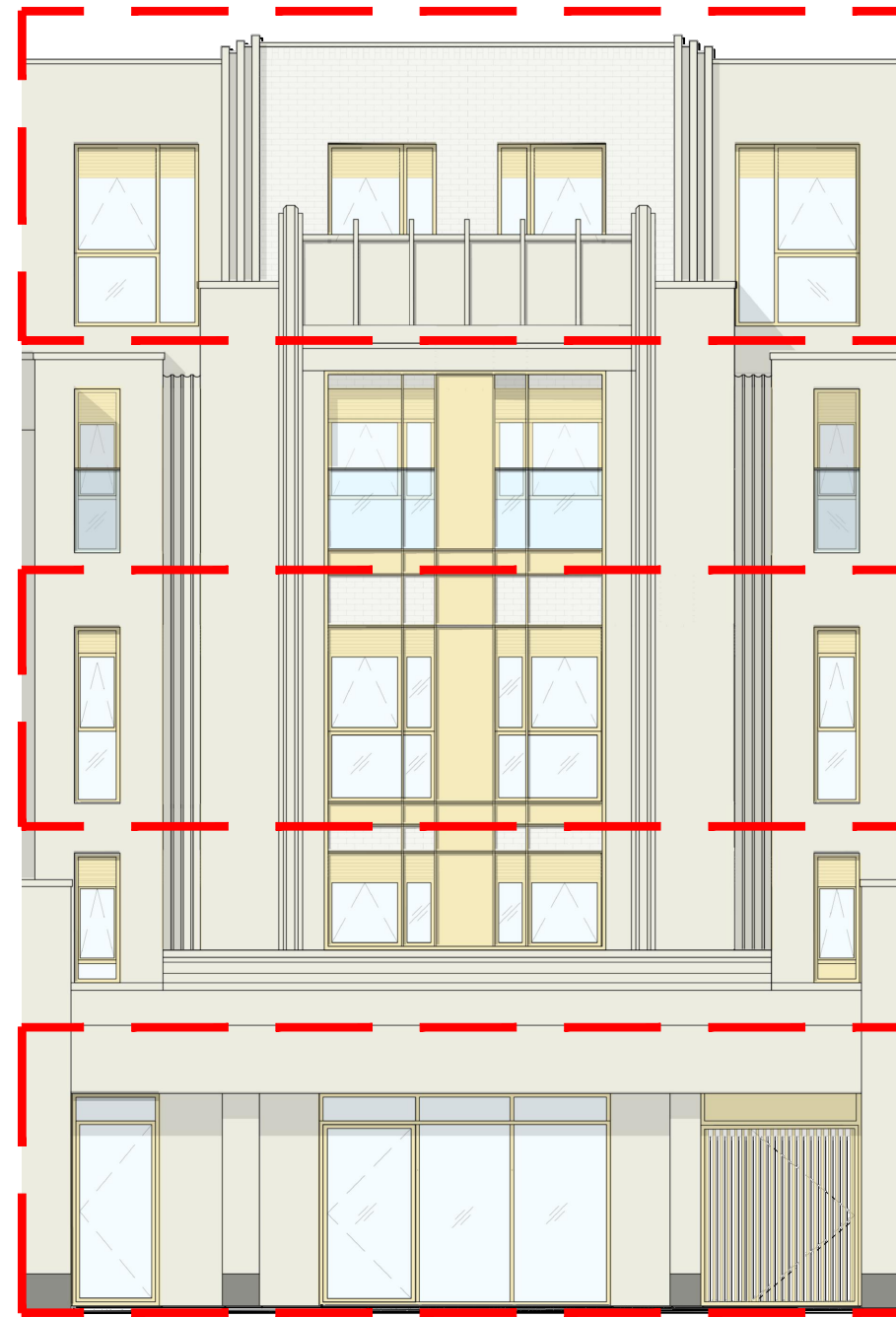


2 BLOCK C - GROUND FLOOR PLAN
1:20

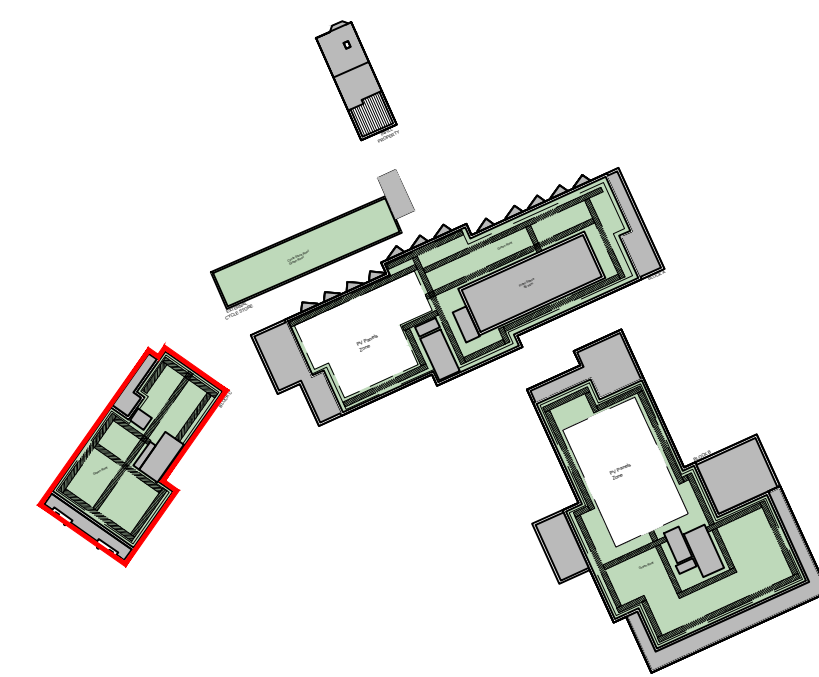


A-A BLOCK C - SECTION A-A - BAY STUDY
1:20

- MATERIALS KEY:
- ① BRICK 01 - BUFF MULTI BRICKWORK IN 'STANDARD STRETCHED BOND'
 - ② BRICK 02 - RED MULTI BRICKWORK IN 'STANDARD STRETCHED BOND'
 - ③ BRICK 03 - RED STOCK BRICKWORK IN 'TO MATCH NEIGHBOURING HOUSES'
 - ④ PROJECTING VERTICAL STRETCHER IN SOLDIER COURSE
 - ⑤ PROJECTING BRICK DETAIL
 - ⑥ ANGLED WINDOW - PPC ALUMINIUM (RAL 6015)
 - ⑦ GLASS TYPE 1: FROSTED
 - ⑧ LOUVRED PANELS/DOORS (RAL 6015)
 - ⑨ PERFORATED WINDOW PANEL (RAL 6015)
 - ⑩ SIGNAGE
 - ⑪ BRICKWORK LINTEL - WHITE BRICKS
 - ⑫ PRECAST
 - ⑬ METALWORK (RAL 6015)
 - ⑭ BALUSTRADE (RAL 6015)
 - ⑮ STONE COPING
 - ⑯ METALWORK - YELLOWGOLD
 - ⑰ BRICK 04 - WHITE BRICKWORK IN STANDARD STRETCHED BOND
 - ⑱ SINGLE SOLDIER COURSE IN BRICK 04
 - ⑲ SPANDREL GLASS PANEL
 - ⑳ GLASS BALUSTRADE
 - ㉑ RENDER TO MATCH 806 HIGH ROAD FRONTAGE



Key Elevation
1:100



Key Plan
NTS

0 200 400 600 800 1000 2000mm

The copyright of this drawing is vested with Corstorphine & Wright Ltd and must not be copied or reproduced without the consent of the company.

18/02/2025 AS RJ
13/11/2024 AS SJ
Rev Description Date Dwg Csk

Client
J Wool Group

Project
High Road
Leyton
Drawing Title
Proposed Bay Study
Block C
Drawing Status
PLANNING

Corstorphine & Wright

Birmingham Studio
Alpha Building, Suffolk Street Queensway, Birmingham, B1 1TT
0121 727 6560
corstorphine-wright.com

Drawing No
24080-0371

Drawn AS
Checked SJ
Paper Size A0
Scale 1:20

Revision
P02

Date
16.09.24