



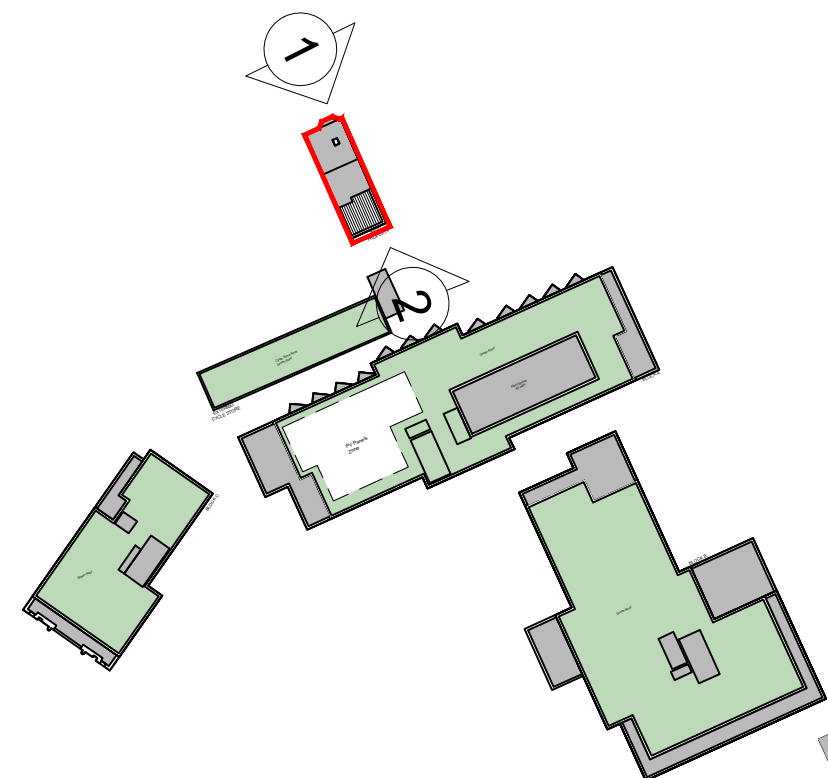
1 Front Elevation - William Street
1:50



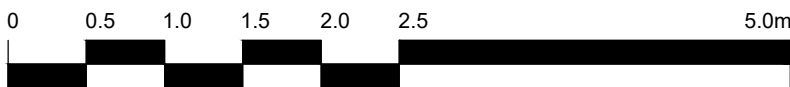
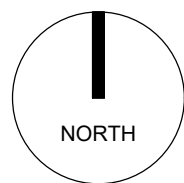
1 Rear Elevation
1:50

MATERIALS KEY:

- 01 BRICK 01 - BUFF MULTI BRICKWORK IN 'STANDARD STRETCHED BOND'
- 02 BRICK 02 - RED MULTI BRICKWORK IN 'STANDARD STRETCHED BOND'
- 03 BRICK 03 - RED STOCK BRICKWORK IN 'TO MATCH NEIGHBOURING HOUSES'
- 04 PROJECTING VERTICAL STRETCHER IN SOLDIER COURSE
- 05 PROJECTING BRICK DETAIL
- 06 ANGLED WINDOW - PPC ALUMINIUM (RAL 6015)
- 07 GLASS TYPE 1: FROSTED
- 08 LOUVRED PANELS/DOORS (RAL 6015)
- 09 PERFORATED WINDOW PANEL (RAL 6015)
- 10 SIGNAGE
- 11 BRICKWORK LINTEL - WHITE BRICKS
- 12 PRECAST
- 13 METALWORK (RAL 6015)
- 14 BALUSTRADE (RAL 6015)



Key Plan
NTS



The copyright of this drawing is vested with Corstorphine & Wright Ltd and must not be copied or reproduced without the consent of the company.

P02 Amended Client Name
P01 Updated Material Key
Rev. Description

13/11/2024 AS SJ
23/07/2024 AS SJ
Date Draw Chk.

Client
J Wool Group

Project
High Road Leyton

Drawing Title
Proposed - Elevations
Infill Property

Drawing Status
PLANNING

Corstorphine & Wright

Birmingham Studio
Alpha Building, Suffolk Street Queensway, Birmingham, B1 1TT
0121 737 8350

corstorphine-wright.com

Drawing No.
24080-0350

Drawn AS
Checked SJ
Paper Size A2
Scale 1:50

Date 17/07/2024
Revision P02