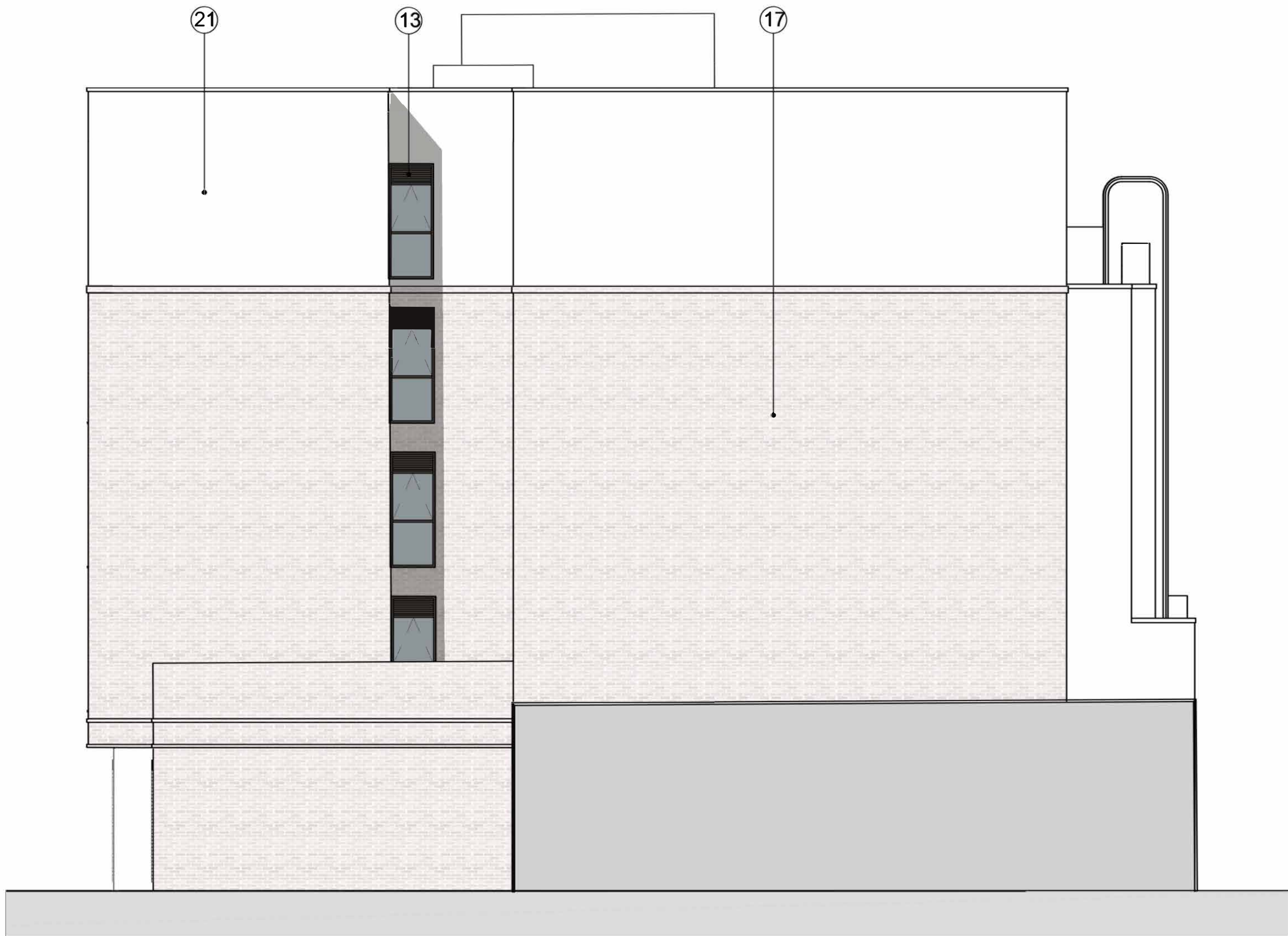
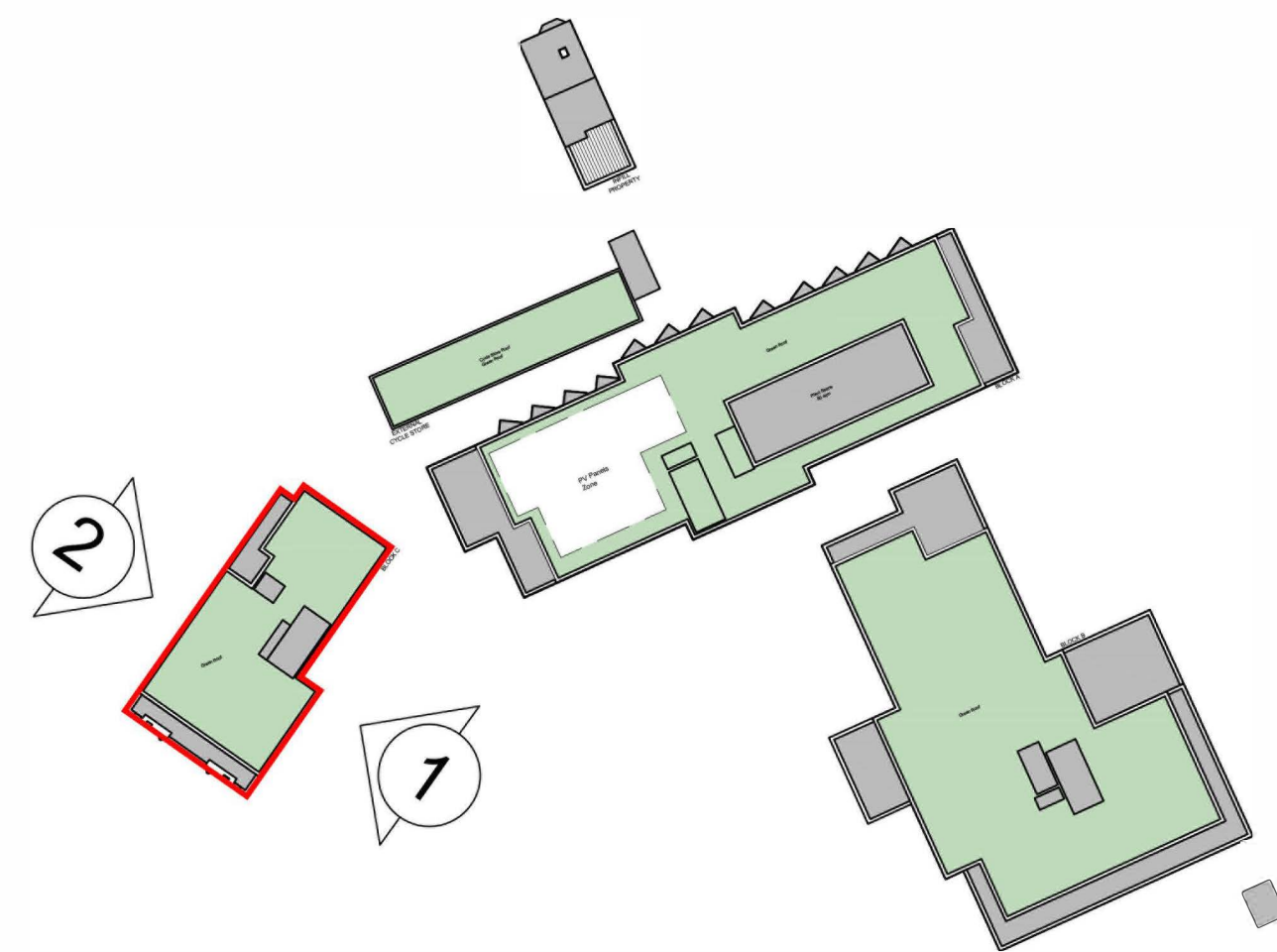


1 Block C - Side Elevation
1:100



2 Block C - Side Elevation
1:100

- MATERIALS KEY:
- | | |
|---|--|
| 01 BRICK 01 - BUFF MULTI BRICKWORK IN 'STANDARD STRETCHED BOND' | 17 BRICK 04 - WHITE BRICKWORK IN STANDARD STRETCHED BOND |
| 02 BRICK 02 - RED MULTI BRICKWORK IN 'STANDARD STRETCHED BOND' | 18 SINGLE SOLDIER COURSE IN BRICK 04 |
| 03 BRICK 03 - RED STOCK BRICKWORK IN 'TO MATCH NEIGHBOURING HOUSES' | 19 SPANDREL GLASS PANEL |
| 04 PROJECTING VERTICAL STRETCHER IN SOLDIER COURSE | 20 GLASS BALUSTRADE |
| 05 PROJECTING BRICK DETAIL | 21 RENDER TO MATCH 806 HIGH ROAD FRONTAGE |
| 06 ANGLED WINDOW - PPC ALUMINIUM (RAL 6015) | |
| 07 GLASS TYPE 1: FROSTED | |
| 08 LOUVRED PANELS/DOORS (RAL 6015) | |
| 09 PERFORATED WINDOW PANEL (RAL 6015) | |
| 10 SIGNAGE | |
| 11 BRICKWORK LINTEL - WHITE BRICKS | |
| 12 PRECAST | |
| 13 METALWORK (RAL 6015) | |
| 14 BALUSTRADE (RAL 6015) | |
| 15 STONE COPING | |
| 16 METALWORK - YELLOW/GOLD | |



Key Plan
NTS



The copyright of this drawing is vested with Corstorphine & Wright Ltd and must not be copied or reproduced without the consent of the company.

Rev.	Description	Date	Drw.	Chk.
------	-------------	------	------	------

Client
J Wool Group

Project
High Road Leyton

Drawing Title
Proposed - Elevation
Block C - Side Elevations
Drawing Status
PLANNING

Corstorphine & Wright

Birmingham Studio
Alpha Building, Suffolk Street Queensway, Birmingham, B1 1TT
0121 737 8350

corstorphine-wright.com

Drawing No. 24080-0343		Revision P00	
Drawn AS	Checked SJ	Paper Size A2	Scale 1:100
Date 12/11/2024			