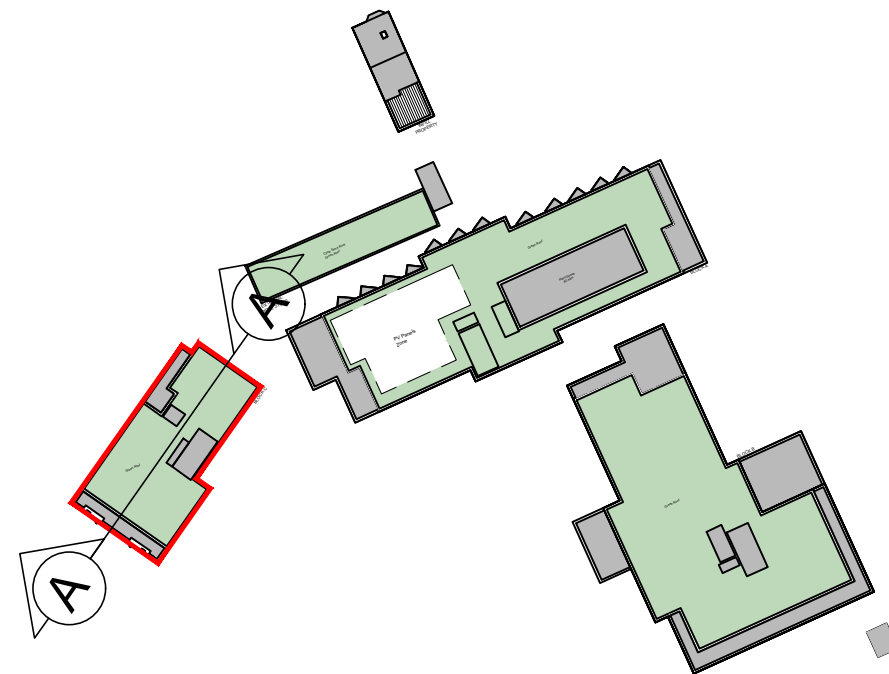
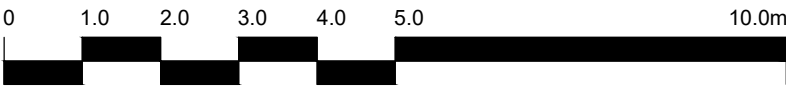
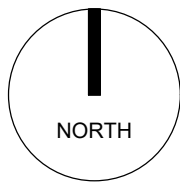


1 Block C - Section AA
1:100

- MATERIALS KEY:
- 01 BRICK 01 - BUFF MULTI BRICKWORK IN 'STANDARD STRETCHED BOND'
 - 02 BRICK 02 - RED MULTI BRICKWORK IN 'STANDARD STRETCHED BOND'
 - 03 BRICK 03 - RED STOCK BRICKWORK IN 'TO MATCH NEIGHBOURING HOUSES'
 - 04 PROJECTING VERTICAL STRETCHER IN SOLDIER COURSE
 - 05 PROJECTING BRICK DETAIL
 - 06 ANGLED WINDOW - PPC ALUMINIUM (RAL 6015)
 - 07 GLASS TYPE 1: FROSTED
 - 08 LOUVRED PANELS/DOORS (RAL 6015)
 - 09 PERFORATED WINDOW PANEL (RAL 6015)
 - 10 SIGNAGE
 - 11 BRICKWORK LINTEL - WHITE BRICKS
 - 12 PRECAST
 - 13 METALWORK (RAL 6015)
 - 14 BALUSTRADE (RAL 6015)
 - 15 STONE COPING
 - 16 METALWORK - YELLOW/GOLD
 - 17 BRICK 04 - WHITE BRICKWORK IN STANDARD STRETCHED BOND
 - 18 SINGLE SOLDIER COURSE IN BRICK 04
 - 19 SPANDREL GLASS PANEL
 - 20 GLASS BALUSTRADE
 - 21 RENDER TO MATCH 806 HIGH ROAD FRONTAGE



Key Plan
NTS



The copyright of this drawing is vested with Corstorphine & Wright Ltd and must not be copied or reproduced without the consent of the company.

| Rev. | Description | Date | Drw. | Chk. |
|------|-------------|------|------|------|
|------|-------------|------|------|------|

Client
J Wool Group

Project
High Road Leyton

Drawing Title
Proposed - Section
Block C -Section AA

Drawing Status
PLANNING

Corstorphine & Wright

Birmingham Studio
Alpha Building, Suffolk Street Queensway, Birmingham, B1 1TT
0121 737 8350

corstorphine-wright.com

| | | | | | |
|---------------------------|--|--|--|-----------------|--|
| Drawing No. 24080-0342 | | | | Revision P00 | |
|---------------------------|--|--|--|-----------------|--|

| | | | | |
|-------------|---------------|------------------|----------------|--------------------|
| Drawn AS | Checked SJ | Paper Size A2 | Scale 1:100 | Date 11/11/2024 |
|-------------|---------------|------------------|----------------|--------------------|