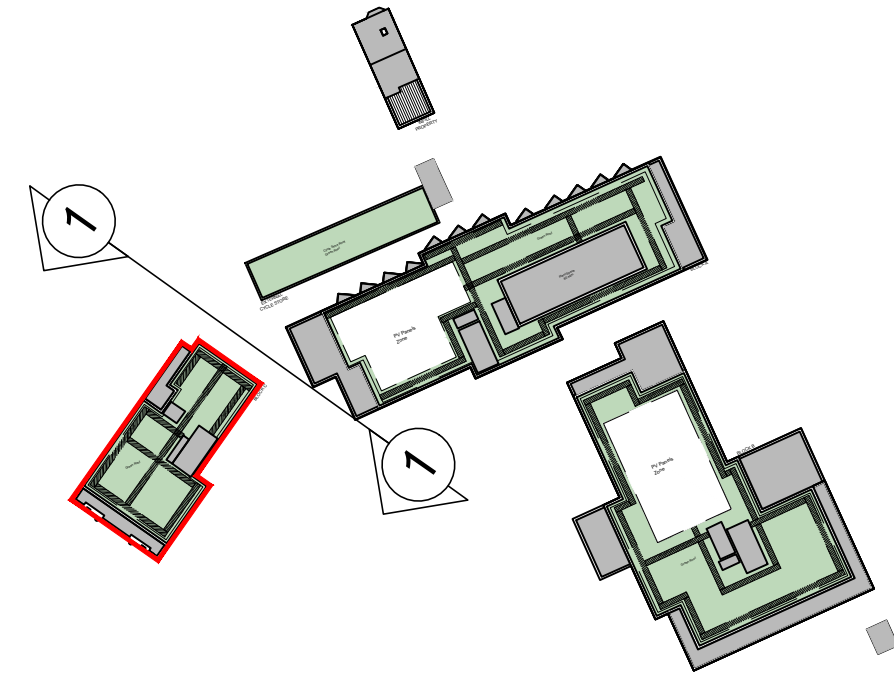




1 Block C - North East Elevation
1:50

- MATERIALS KEY:
- 01 BRICK 01 - BUFF MULTI BRICKWORK IN 'STANDARD STRETCHED BOND'
 - 02 BRICK 02 - RED MULTI BRICKWORK IN 'STANDARD STRETCHED BOND'
 - 03 BRICK 03 - RED STOCK BRICKWORK IN 'TO MATCH NEIGHBOURING HOUSES'
 - 04 PROJECTING VERTICAL STRETCHER IN SOLDIER COURSE
 - 05 PROJECTING BRICK DETAIL
 - 06 ANGLED WINDOW - PPC ALUMINIUM (RAL 6015)
 - 07 GLASS TYPE 1: FROSTED
 - 08 LOUVRED PANELS/DOORS (RAL 6015)
 - 09 PERFORATED WINDOW PANEL (RAL 6015)
 - 10 SIGNAGE
 - 11 BRICKWORK LINTEL - WHITE BRICKS
 - 12 PRECAST
 - 13 METALWORK (RAL 6015)
 - 14 BALUSTRADE (RAL 6015)
 - 15 STONE COPING
 - 16 METALWORK - YELLOW/GOLD
 - 17 BRICK 04 - WHITE BRICKWORK IN STANDARD STRETCHED BOND
 - 18 SINGLE SOLDIER COURSE IN BRICK 04
 - 19 SPANDREL GLASS PANEL
 - 20 GLASS BALUSTRADE
 - 21 RENDER TO MATCH 806 HIGH ROAD FRONTAGE



Key Plan
NTS

0

0.5

1.0

1.5

2.0

2.5

5.0m

The copyright of this drawing is vested with Corstorphine & Wright Ltd and must not be copied or reproduced without the consent of the company.

P04

Removed Commercial Fire Escape Door

18/02/2025

AS

SJ

P03

Added Lift Overrun

11/11/2024

AS

SJ

P02

Updated Key Plan

23/07/2024

AS

SJ

P01

Added Material Key Numbers to Elevation

19/07/2024

AS

SJ

Rev.

Description

Date

Drw.

Chk.

Client

J Group

Project

High Road Leyton

Drawing Title

Proposed - Elevation
Block C - North East Elevation

Drawing Status

PLANNING

Corstorphine & Wright

Birmingham Studio

Alpha Building, Suffolk Street Queensway, Birmingham, B1 1TT

0121 737 8350

corstorphine-wright.com

Drawing No.

24080-0341

Revision

P04

Drawn

AS

Checked

SJ

Paper Size

A2

Scale

1:50

Date

17/07/2024