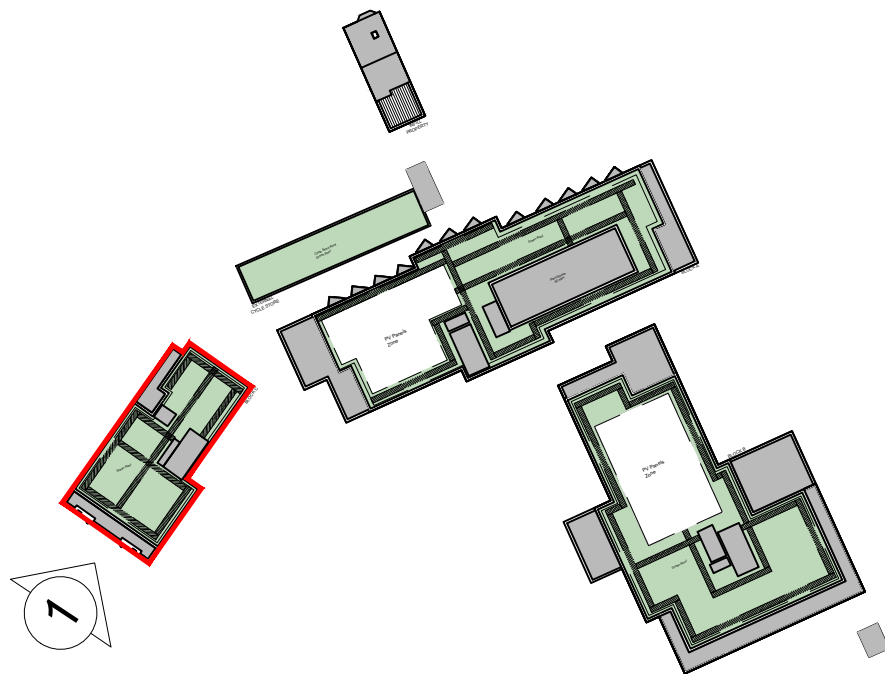


1 Front Elevation - High Road
1:100

- MATERIALS KEY:
- 01 BRICK 01 - BUFF MULTI BRICKWORK IN 'STANDARD STRETCHED BOND'
 - 02 BRICK 02 - RED MULTI BRICKWORK IN 'STANDARD STRETCHED BOND'
 - 03 BRICK 03 - RED STOCK BRICKWORK IN 'TO MATCH NEIGHBOURING HOUSES'
 - 04 PROJECTING VERTICAL STRETCHER IN SOLDIER COURSE
 - 05 PROJECTING BRICK DETAIL
 - 06 ANGLED WINDOW - PPC ALUMINIUM (RAL 6015)
 - 07 GLASS TYPE 1: FROSTED
 - 08 LOUVRED PANELS/DOORS (RAL 6015)
 - 09 PERFORATED WINDOW PANEL (RAL 6015)
 - 10 SIGNAGE
 - 11 BRICKWORK LINTEL - WHITE BRICKS
 - 12 PRECAST
 - 13 METALWORK (RAL 6015)
 - 14 BALUSTRADE (RAL 6015)
 - 15 STONE COPING
 - 16 METALWORK - YELLOW/GOLD
 - 17 BRICK 04 - WHITE BRICKWORK IN STANDARD STRETCHED BOND
 - 18 SINGLE SOLDIER COURSE IN BRICK 04
 - 19 SPANDREL GLASS PANEL
 - 20 GLASS BALUSTRADE
 - 21 RENDER TO MATCH 806 HIGH ROAD FRONTAGE



Key Plan
NTS

010.0m

01.02.03.04.05.0

The copyright of this drawing is vested with Corstorphine & Wright Ltd and must not be copied or reproduced without the consent of the company.

P03Lacet windows removed and existing parapet retained18/02/2025AS SJ

P02Amended third floor elevation11/11/2024AS SJ

P01Updated Material Key23/07/2024AS SJ

Rev.DescriptionDateDrw.Chk.

ClientJ Group

ProjectHigh Road Leyton

Drawing TitleProposed - ElevationBlock C - High Road

Drawing StatusPLANNING

Corstorphine & Wright

Birmingham StudioAlpha Building, Suffolk Street Queensway, Birmingham, B1 1TT0121 737 8350corstorphine-wright.com

Drawing No.24080-0340

RevisionP03

DrawnASCheckedSJPaper SizeA2Scale1:100

Date17/07/2024