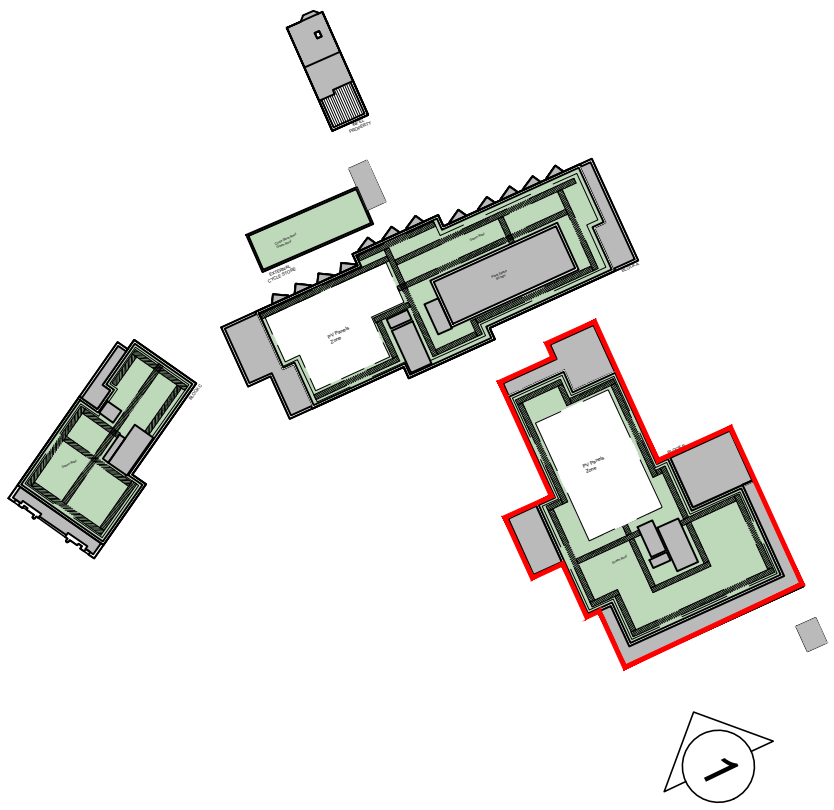




- MATERIALS KEY:
- 01 BRICK 01 - BUFF MULTI BRICKWORK IN 'STANDARD STRETCHED BOND'
 - 02 BRICK 02 - RED MULTI BRICKWORK IN 'STANDARD STRETCHED BOND'
 - 03 BRICK 03 - RED STOCK BRICKWORK IN 'TO MATCH NEIGHBOURING HOUSES'
 - 04 PROJECTING VERTICAL STRETCHER IN SOLDIER COURSE
 - 05 PROJECTING BRICK DETAIL
 - 06 ANGLED WINDOW - PPC ALUMINIUM (RAL 6015)
 - 07 GLASS TYPE 1: FROSTED
 - 08 LOUVRED PANELS/DOORS (RAL 6015)
 - 09 PERFORATED WINDOW PANEL (RAL 6015)
 - 10 SIGNAGE
 - 11 BRICKWORK LINTEL - WHITE BRICKS
 - 12 PRECAST
 - 13 METALWORK (RAL 6015)
 - 14 BALUSTRADE (RAL 6015)
 - 15 STONE COPING
 - 16 METALWORK - YELLOW/GOLD
 - 17 BRICK 04 - WHITE BRICKWORK IN STANDARD STRETCHED BOND
 - 18 SINGLE SOLDIER COURSE IN BRICK 04
 - 19 SPANDREL GLASS PANEL
 - 20 GLASS BALUSTRADE
 - 21 RENDER TO MATCH 806 HIGH ROAD FRONTAGE



Key Plan
NTS

1 PROPOSED SOUTH ELEVATION - BLOCK B
1:100

Client J-Group		<div>Corstorphine & Wright</div> <div>Warwick Studio Brook Hall, Brook Street, Warwick, CV34 4BL 01926 658 444 corstorphine-wright.com</div>		<div></div>	
Project High Road Leyton					
Drawing Title Proposed Elevation Block B - South Elevation		Drawing No. 24080-0332		Revision P05	
Drawing Status PLANNING		Drawn AC	Checked AS	Paper Size A1	Scale 1:100
		Date 17/07/2024			

<div>0 1.0 2.0 3.0 4.0 5.0 10.0m</div> <div>The copyright of this drawing is vested with Corstorphine & Wright Ltd and must not be copied or reproduced without the consent of the company.</div>		<div>P05 Updated to suit Highways comments P04 Added Cycle Store Door P03 Amended to suit comments P02 Updated Key Plan P01 Added Material Key Numbers to Elevation</div> <div>Rev. Description</div>	<div>28/02/2025 AS SJ 18/02/2025 AS SJ 08/11/2024 AS SJ 23/07/2024 AS SJ 18/07/2024 AS SJ</div> <div>Date Drw. Ck.</div>
---	--	---	--