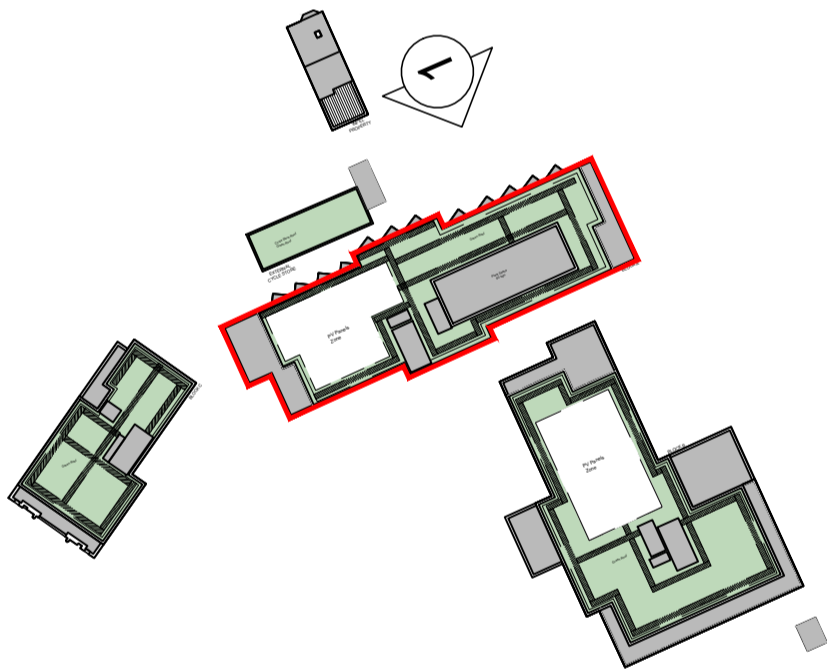




- MATERIALS KEY:
- 01 BRICK 01 - BUFF MULTI BRICKWORK IN 'STANDARD STRETCHED BOND'
 - 02 BRICK 02 - RED MULTI BRICKWORK IN 'STANDARD STRETCHED BOND'
 - 03 BRICK 03 - RED STOCK BRICKWORK IN 'TO MATCH NEIGHBOURING HOUSES'
 - 04 PROJECTING VERTICAL STRETCHER IN SOLDIER COURSE
 - 05 PROJECTING BRICK DETAIL
 - 06 ANGLED WINDOW - PPC ALUMINIUM (RAL 6015)
 - 07 GLASS TYPE 1: FROSTED
 - 08 LOUVRED PANELS/DOORS (RAL 6015)
 - 09 PERFORATED WINDOW PANEL (RAL 6015)
 - 10 SIGNAGE
 - 11 BRICKWORK LINTEL - WHITE BRICKS
 - 12 PRECAST
 - 13 METALWORK (RAL 6015)
 - 14 BALUSTRADE (RAL 6015)
 - 15 STONE COPING
 - 16 METALWORK - YELLOW/GOLD
 - 17 BRICK 04 - WHITE BRICKWORK IN STANDARD STRETCHED BOND
 - 18 SINGLE SOLDIER COURSE IN BRICK 04
 - 19 SPANDREL GLASS PANEL
 - 20 GLASS BALUSTRADE
 - 21 RENDER TO MATCH 806 HIGH ROAD FRONTAGE



Key Plan
NTS

1 BLOCK A - NORTH ELEVATION
1:100

<div><div><div>0</div><div>1.0</div><div>2.0</div><div>3.0</div><div>4.0</div><div>5.0</div><div>10.0m</div></div><div>The copyright of this drawing is vested with Corstorphine & Wright Ltd and must not be copied or reproduced without the consent of the company.</div></div>		<div><div><div>P05 Updated to suit Highways comments</div><div>28/02/2025 AS SJ</div></div><div><div>P04 Cycle store - Single leaf door</div><div>18/02/2025 AS SJ</div></div><div><div>P03 Amended Client Name</div><div>13/11/2024 AS SJ</div></div><div><div>P02 Updated Key Plan</div><div>23/07/2024 AS SJ</div></div><div><div>P01 Added Material Key Numbers to Drawing</div><div>18/07/2024 AS SJ</div></div><div><table><tr><th>Rev.</th><th>Description</th><th>Date</th><th>Dwn.</th><th>Chk.</th></tr><tr><td></td><td></td><td></td><td></td><td></td></tr></table></div></div>		Rev.	Description	Date	Dwn.	Chk.						<div><div>Client</div><div>J Wool Group</div></div> <div><div>Project</div><div>High Road</div><div>Leyton</div></div> <div><div>Drawing Title</div><div>Proposed Elevation</div><div>Block A - North</div></div> <div><div>Drawing Status</div><div>PLANNING</div></div>		<div><div>Corstorphine & Wright</div><div><div>Warwick Studio</div><div>Brook Hall, Brook Street, Warwick, CV34 4BL</div><div>01926 658 444</div><div>corstorphine-wright.com</div></div></div> <div><div><div>Drawing No.</div><div>24080-0330</div></div><div><div>Revision</div><div>P05</div></div></div> <div><div><div>Drawn</div><div>AC</div></div><div><div>Checked</div><div>AS</div></div><div><div>Paper Size</div><div>A1</div></div><div><div>Scale</div><div>1:100</div></div><div><div>Date</div><div>11.06.2024</div></div></div>	
Rev.	Description	Date	Dwn.	Chk.													