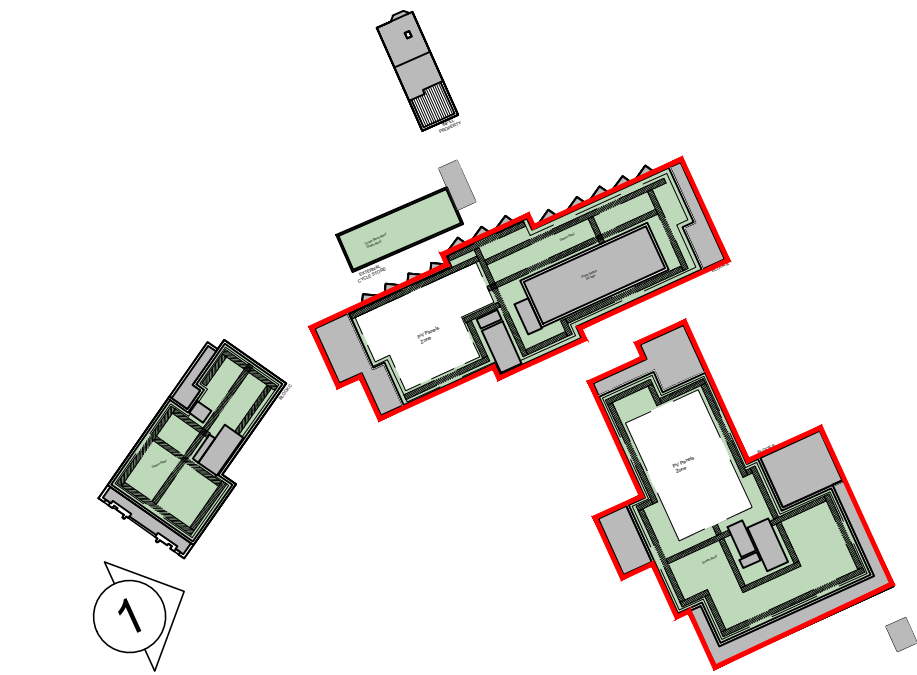




- MATERIALS KEY:
- 01 BRICK 01 - BUFF MULTI BRICKWORK IN 'STANDARD STRETCHED BOND'
 - 02 BRICK 02 - RED MULTI BRICKWORK IN 'STANDARD STRETCHED BOND'
 - 03 BRICK 03 - RED STOCK BRICKWORK IN 'TO MATCH NEIGHBOURING HOUSES'
 - 04 PROJECTING VERTICAL STRETCHER IN SOLDIER COURSE
 - 05 PROJECTING BRICK DETAIL
 - 06 ANGLED WINDOW - PPC ALUMINIUM (RAL 6015)
 - 07 GLASS TYPE 1: FROSTED
 - 08 LOUVRED PANELS/DOORS (RAL 6015)
 - 09 PERFORATED WINDOW PANEL (RAL 6015)
 - 10 SIGNAGE
 - 11 BRICKWORK LINTEL - WHITE BRICKS
 - 12 PRECAST
 - 13 METALWORK (RAL 6015)
 - 14 BALUSTRADE (RAL 6015)
 - 15 STONE COPING
 - 16 METALWORK - YELLOW/GOLD
 - 17 BRICK 04 - WHITE BRICKWORK IN STANDARD STRETCHED BOND
 - 18 SINGLE SOLDIER COURSE IN BRICK 04
 - 19 SPANDREL GLASS PANEL
 - 20 GLASS BALUSTRADE
 - 21 RENDER TO MATCH 806 HIGH ROAD FRONTAGE



Key Plan
NTS

1 PROPOSED WEST ELEVATION - BLOCK A&B
1:100

<div>010.0m</div> <div>The copyright of this drawing is vested with Corstorphine & Wright Ltd and must not be copied or reproduced without the consent of the company.</div>		<div><div><div>P05 Updated to suit Highways comments</div><div>P04 Cycle Store Door - Single Leaf</div><div>P03 Amended Block B Lift Overrun</div><div>P02 Updated Key Plan</div><div>P01 Added Material Key Numbers to Elevation</div><div>Rev. Description</div></div><div><div>28/02/2025 AS SJ</div><div>18/02/2025 AS SJ</div><div>08/11/2024 AS SJ</div><div>23/07/2024 AS SJ</div><div>18/07/2024 AS SJ</div><div>Date Drw. Chk.</div></div></div>		<div>Client J-Group</div> <div>Project High Road Leyton</div> <div>Drawing Title Proposed - Elevation Block A&B - West Elevation</div> <div>Drawing Status PLANNING</div>		<div>Corstorphine & Wright</div> <div>Warwick Studio Brook Hall, Brook Street, Warwick, CV34 4BL 01926 658 444 corstorphine-wright.com</div> <div><div>Drawing No. 24080-0321</div><div>Revision P05</div></div> <div><div>Drawn AC</div><div>Checked AS</div><div>Paper Size A1</div><div>Scale 1:100</div><div>Date 17/07/2024</div></div>
--	--	---	--	---	--	--