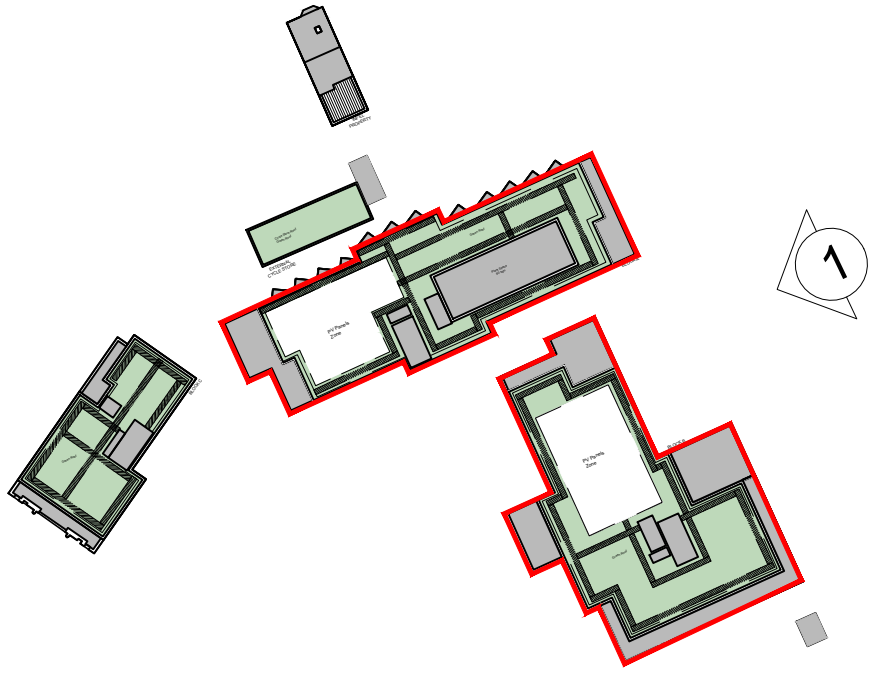




- MATERIALS KEY:
- 01 BRICK 01 - BUFF MULTI BRICKWORK IN 'STANDARD STRETCHED BOND'
 - 02 BRICK 02 - RED MULTI BRICKWORK IN 'STANDARD STRETCHED BOND'
 - 03 BRICK 03 - RED STOCK BRICKWORK IN 'TO MATCH NEIGHBOURING HOUSES'
 - 04 PROJECTING VERTICAL STRETCHER IN SOLDIER COURSE
 - 05 PROJECTING BRICK DETAIL
 - 06 ANGLED WINDOW - PPC ALUMINIUM (RAL 6015)
 - 07 GLASS TYPE 1: FROSTED
 - 08 LOUVRED PANELS/DOORS (RAL 6015)
 - 09 PERFORATED WINDOW PANEL (RAL 6015)
 - 10 SIGNAGE
 - 11 BRICKWORK LINTEL - WHITE BRICKS
 - 12 PRECAST
 - 13 METALWORK (RAL 6015)
 - 14 BALUSTRADE (RAL 6015)
 - 15 STONE COPING
 - 16 METALWORK - YELLOW/GOLD
 - 17 BRICK 04 - WHITE BRICKWORK IN STANDARD STRETCHED BOND
 - 18 SINGLE SOLDIER COURSE IN BRICK 04
 - 19 SPANDREL GLASS PANEL
 - 20 GLASS BALUSTRADE
 - 21 RENDER TO MATCH 806 HIGH ROAD FRONTAGE



Key Plan
NTS

1 PROPOSED EAST ELEVATION - BLOCK A&B
1:100

		<p>Client J-Group</p> <p>Project High Road Leyton</p> <p>Drawing Title Proposed Elevation Block A&B - East Elevation</p> <p>Drawing Status PLANNING</p>		<p>Warwick Studio Brook Hall, Brook Street, Warwick, CV34 4BL 01926 658 444 corstorphine-wright.com</p> <p>Drawing No. 24080-0320</p> <p>Scale 1:100</p> <p>Date 16/07/2024</p>		<p>Corstorphine & Wright</p> <p>Revision P05</p>	
<p>The copyright of this drawing is vested with Corstorphine & Wright Ltd and must not be copied or reproduced without the consent of the company.</p>		<p>28/02/2025 AS SJ 18/02/2025 AS SJ 08/11/2024 AS SJ 23/07/2024 AS SJ 18/07/2024 AS SJ</p> <p>Rev. Description Date Drw. Ck.</p>		<p>Drawn AC</p> <p>Checked AS</p> <p>Paper Size A1</p> <p>Scale 1:100</p>		<p>Drawn AC</p> <p>Checked AS</p> <p>Paper Size A1</p> <p>Scale 1:100</p>	