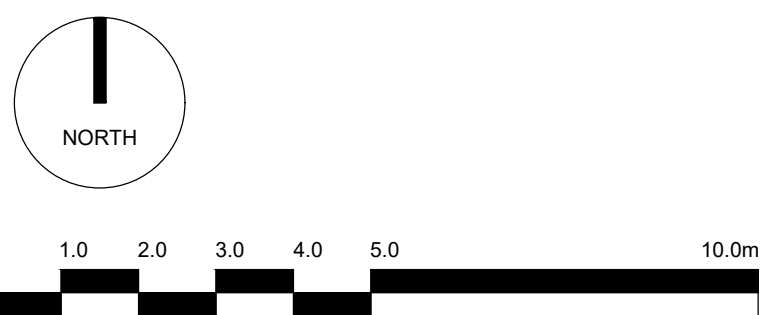




1 PROPOSED GROUND FLOOR PLAN
1:200



| | | | |
|--|-------------|------|-----------|
| P10 Loading Bay Hatched Markings | 07/03/25 | AS | SJ |
| P09 Amended Label | 07/03/25 | AS | SJ |
| P08 Updated Landscape Design | 06/03/25 | AS | SJ |
| P07 Updated External Cycle Store | 27/02/25 | AS | SJ |
| P06 Updated Cycle Stores | 27/02/25 | AS | SJ |
| P05 Amended Internal Layout Block A and C, Updated doors and removed north gate to suit comments | 18/02/25 | AS | SJ |
| P04 Added Levels and Gradients | 05/12/24 | AS | SJ |
| P03 Amended to suit comments | 12/11/24 | AS | SJ |
| P02 Block A - North Elevation windows | 23/07/24 | AS | SJ |
| P01 Added Landscape Design | 22/07/24 | AS | SJ |
| Rev. | Description | Date | Drw. Chk. |

| | | | |
|------------------------|--|-------------------------|------------------|
| KEY: | | AMENITY SPACE | AFFORDABLE UNITS |
| EN SUITE - 13.5 SQ M | | SERVICES & CYCLE STORE | |
| STUDIOS - 18 SQ M | | COMMERCIAL SPACE | |
| STUDIOS - 23 / 25 SQ M | | | |
| CIRCULATION SPACE | | SITE BOUNDARY | |
| | | APPROVED SCHEME OUTLINE | |

Client
J Group

Project
High Road Leyton

Drawing Title
Proposed - Plan
Ground Floor

Drawing Status
PLANNING

Corstorphine & Wright

Warwick Studio
Brook Hall, Brook Street, Warwick, CV34 4BL
01926 658 444

corstorphine-wright.com

Drawing No.
24080-0311

Drawn
AS

Checked
SJ

Paper Size
A1

Scale
1:200

Revision
P10

Date
16/07/2024