

T2 - TOP
▼ +101.58 m

T2 - Roof
▼ +96.03 m

T2 - 25
▼ +92.42 m

T2 - 24
▼ +89.27 m

T2 - 23
▼ +86.12 m

T2 - 22
▼ +82.98 m

T2 - 21
▼ +79.83 m

T2 - 20
▼ +76.68 m

T2 - 19
▼ +73.53 m

T2 - 18
▼ +70.38 m

T2 - 17
▼ +67.23 m

T2 - 16
▼ +64.08 m

T2 - 15
▼ +60.93 m

T2 - 14
▼ +57.78 m

T2 - 13
▼ +54.63 m

T2 - 12
▼ +51.48 m

T2 - 11
▼ +48.33 m

T2 - 10
▼ +45.18 m

T2 - 09
▼ +42.03 m

T2 - 08
▼ +38.88 m

T2 - 07
▼ +35.73 m

T2 - 06
▼ +32.58 m

T2 - 05
▼ +29.43 m

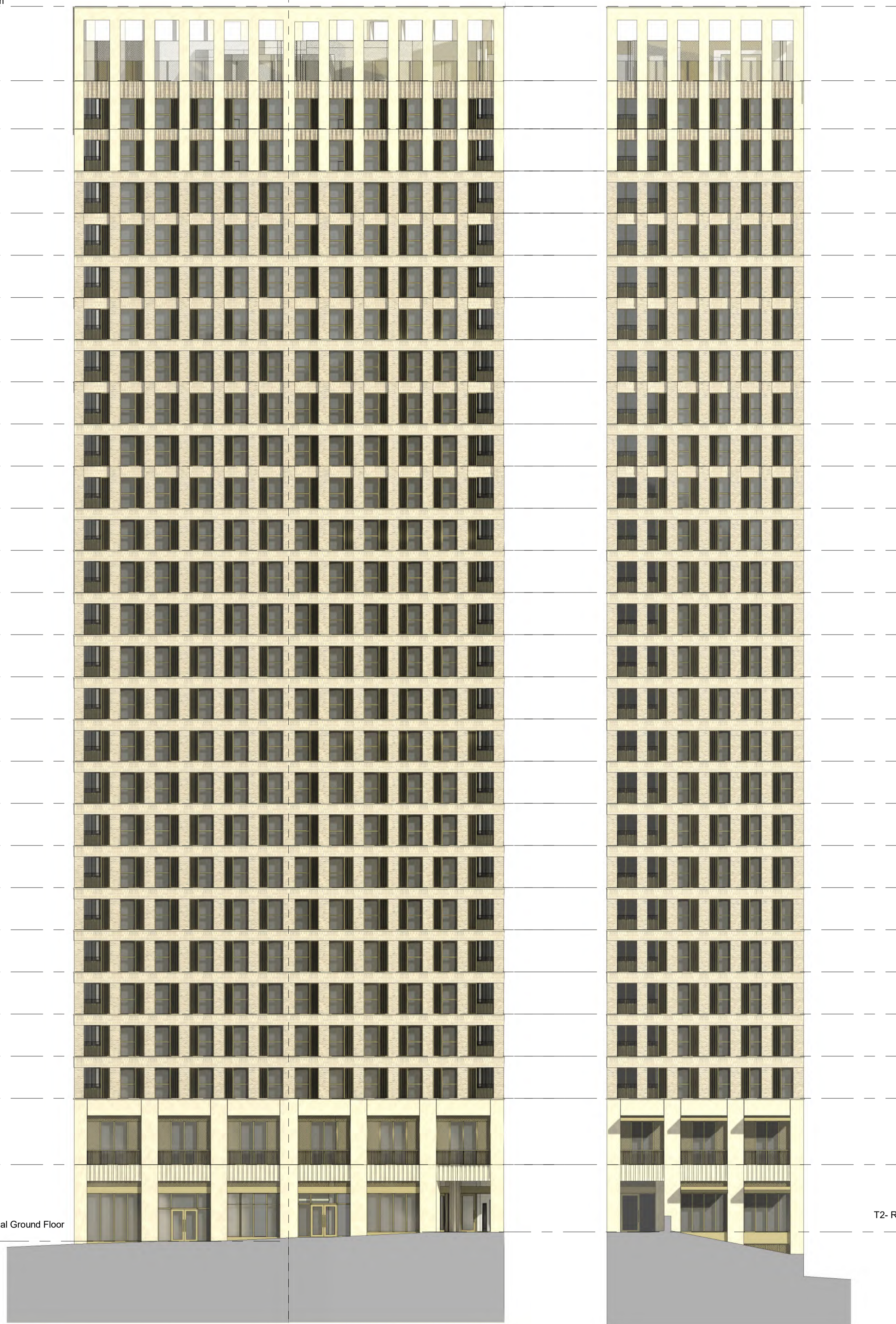
T2 - 04
▼ +26.28 m

T2 - 03
▼ +23.13 m

T2 - 02
▼ +19.98 m

T2 - 01
▼ +15.03 m

T2 - Commercial Ground Floor
▼ +9.30 m

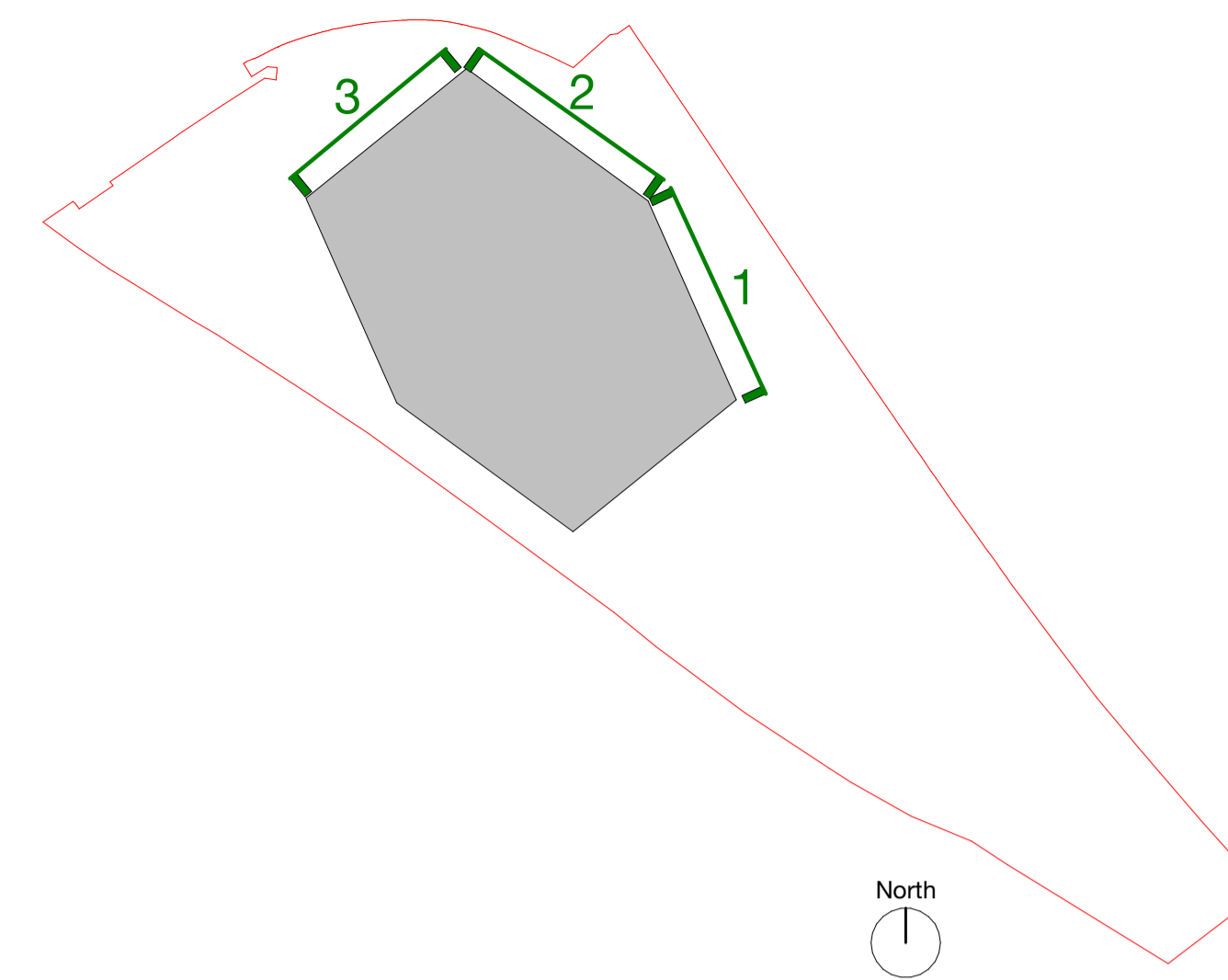


1 East Elevation
1 : 200

2 North-East Elevation
1 : 200

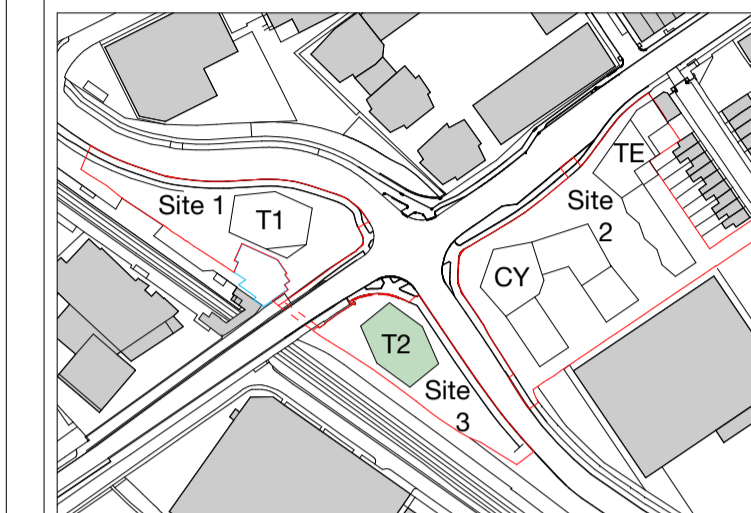
3 North Elevation
1 : 200

T2- Residential Ground Floor
+10.00 m



Copyright Hawkins\Brown Architects
No implied licence exists. This drawing should not be used to calculate areas for the purposes of valuation. Do not scale this drawing. All dimensions to be checked on the site by the contractor and such dimensions to be their responsibility. All work must comply with relevant British Standards and Building Regulations requirements. Drawing errors and omissions to be reported to the architect. To be read in conjunction with Architect's specification and other consultant information.

Rev	Description	Date
P1	Planning Submission	August 2021
P2	Updated for Planning Submission	December 2021
P3	NMA Planning Submission	May 2023
P4	Section 73 Planning Submission	July 2023
P5	Updated for S73 application (2024)	November 2024



Please refer to Landscape Architect's Drawings for further details of the Proposed Landscape.

159 St John Street
London EC1V 4QJ
mail@hawkinsbrown.com
hawkinsbrown.com

Hawkins\Brown

Project
Lea Bridge Station Sites
Argall Way
London E10 7PG
United Kingdom

Drawing
Tower 2 - North and East Elevations

Scale @ A1
1:200
Date
November 2024

Drawn By
DP
Checked By
JC

Job Number
190109
Status
A2
Purpose of Issue
For Planning

Drawing No.
LEABR-HBA-T2-XX-DR-A-08-0280
Rev
P5

