

- This drawing is prepared solely for design and planning submission purposes. It is not intended or suitable for either Building Regulations or Construction purposes and should not be used for such



Aluminium standing seam cladding to roof pitches colour **mid grey (RAL 7037)**

Aluminium powder coated trim colour **light grey (RAL 7035)**

Aluminium standing seam cladding colour **mid grey (RAL 7037)**

Aluminium powder coated window frame trim colour **anthracite (RAL 7016)**

Aluminium powder coated trim colour **light grey (RAL 7037)**

Aluminium powder coated framing to window colour **light grey (RAL 7035)**

Aluminium powder coated window frame trim colour **anthracite (RAL 7016)**

Painted steelwork balustrade (RAL 7016)

Aluminium powder coated fascia to balcony colour **light grey (RAL 7035)**

Aluminium powder coated window frame trim colour **anthracite (RAL 7016)**

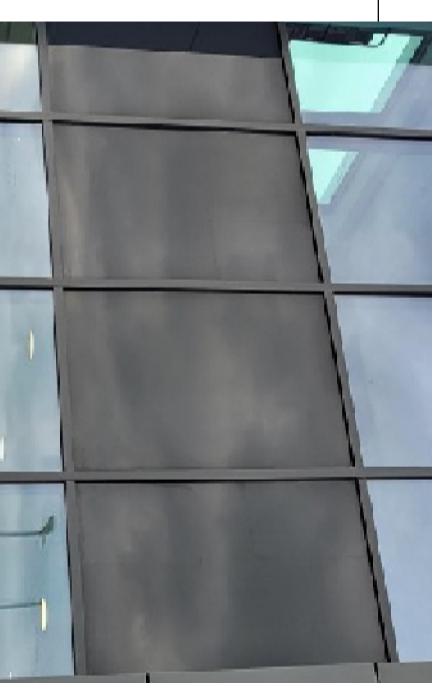
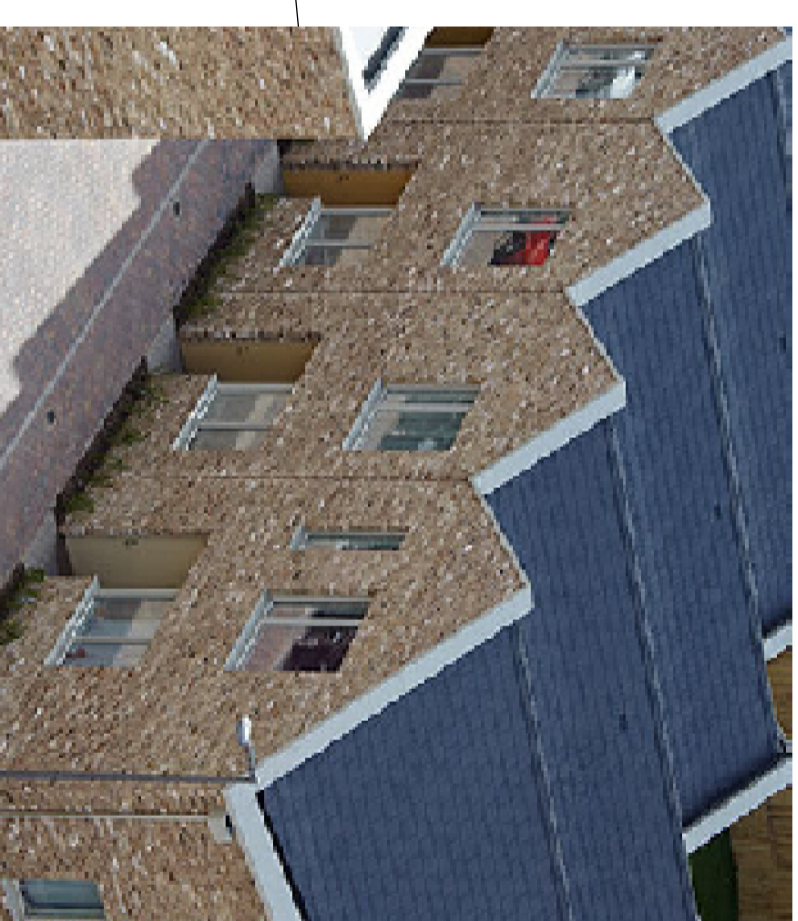
Painted steelwork balustrade (RAL 7016)

Aluminium powder coated trim to cantilever colour **light grey (RAL 7035)**

Mixed buff facing brickwork **Oakington Buff Mixture** type (by Camtech) or similar

Aluminium powder coated window frame trim colour **anthracite (RAL 7016)**

Dark grey opaque glazed panels colour **anthracite (RAL 7016)**



# Part Elevation

client

project  
Proposed Residential Development  
Sutherland Road,  
London, E17 6BH

title  
**Materials Palette**

drawing number

**3447:30**

revision

**G**

scale

1:60 A2

date

Sept 23

drawn by

SB

status

**fisk**  
& associates  
architects

20 chorley road, swinton, manchester, m27 5of  
t - 0161 793 5300 e - info@grafisk.co.uk

