



FLOOR STANDING FEEDER PILLARS FOR INCOMING ELECTRICAL SUPPLY DISTRIBUTION UNITS AND INCOMING FIBRE OPTIC SERVICE DISTRIBUTION UNITS

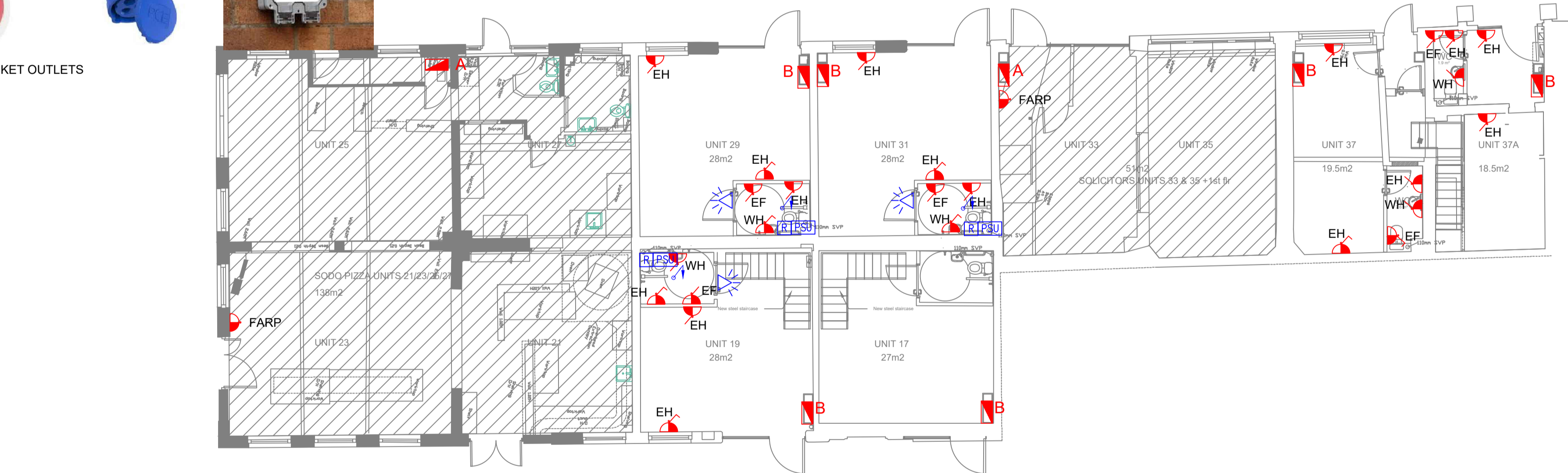


TO CONTROL THE UNDER CROFT LIGHTING

CCTV/ SERVER

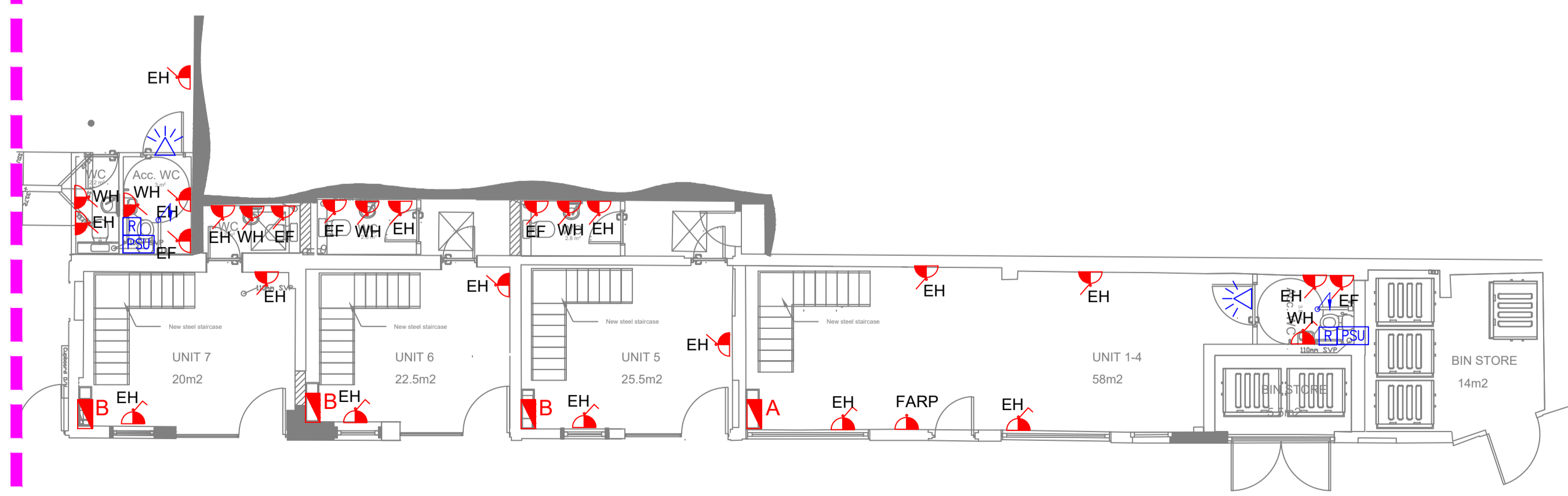


WALL MOUNTED SOCKET OUTLETS



CCTV/RADIO HIGH LEVEL ON THE WALL ARCHWAY ENTRANCE FROM HOE STREET TO FEED 2 NOS CCTV/RADIO UNITS IN THE ARCHWAY. EXACT LOCATION TO BE DETERMINED.

CONTINUATION LINE



ABBREVIATION

SYMBOL DESCRIPTION

- EF EXTRACT FAN
- EH ELECTRIC HEATER
- WH WATER HEATER
- CCTV CLOSED CIRCUIT TELEVISION
- FAP FIRE ALARM PANEL
- FARP FIRE ALARM REPEATER PANEL
- RAR REFUGE ALARM RECEIVER
- AC ACCESS CONTROL
- ACP ACCESS CONTROL PANEL

LEGEND

- 415V 250A RATED 12 WAY DISTRIBUTION BOARD
- 415V 125A RATED 12 WAY DISTRIBUTION BOARD
- 415V 125A RATED 6 WAY DISTRIBUTION BOARD
- 240V 125A RATED 6 WAY DISTRIBUTION BOARD
- 13A FUSED SWITCHED CONNECTION UNIT WITH NEON INDICATOR
- 13A UNSWITCHED FUSED CONNECTION UNIT WITH NEON INDICATOR
- 13A UNSWITCHED FUSED CONNECTION UNIT WITH NEON INDICATOR IN A WEATHERPROOF ENCLOSURE
- WEATHERPROOF LOCKABLE 13A TWIN SWITCHED SOCKET OUTLET
- THREE PHASE LOCKABLE WALL MOUNTED COMMANDO TYPE 20A OR 32A SOCKET OUTLET
- AC ISOLATOR FOR PV ELECTRICITY CONNECTION
- POWER SUPPLY UNIT FOR THE ACCESSIBLE ALARM UNIT
- RESET PUSH BUTTON UNIT FOR THE ACCESSIBLE ALARM UNIT
- DISABLED ALARM PULL CORD SWITCH
- OVER DOOR FLASHING BEACON/SOUNDER
- DISABLED ALARM SYSTEM PANEL
- REFUGE ALARM RECEIVER UNIT WITH A PHONE
- SURFACE MOUNTED SINGLE CHANNEL TIME SWITCH
- ELECTRO-MAGNETIC PLATE ON TOP OF THE GATES
- GATE COLUMN MOUNTED FOB READER
- EMERGENCY BREAK GLASS UNIT
- PUSH TO EXIT BUTTON
- FIRE ALARM INTERFACE UNIT

THIS DRAWING IS PRODUCED FOR USE IN THIS PROJECT ONLY AND MAY NOT BE USED FOR ANY OTHER PURPOSE. NPS PROPERTY CONSULTANTS LTD ACCEPT NO LIABILITY FOR THE USE OF THIS DRAWING OTHER THAN THE PURPOSE FOR WHICH IT WAS INTENDED IN CONNECTION WITH THIS PROJECT AS RECORDED IN THE 'PURPOSE FOR ISSUE' AND 'FILE STATUS CODE'.

THIS DRAWING MAY NOT BE REPRODUCED IN ANY FORM WITHOUT PRIOR WRITTEN AGREEMENT OF NPS PROPERTY CONSULTANTS LTD.

© CROWN COPYRIGHT AND DATABASE RIGHTS 2024 ORDINANCE SURVEY LICENCE NUMBER: -

Notes:

1. THIS DRAWING IS PRODUCED FOR USE IN THIS PROJECT ONLY AND MAY NOT BE USED FOR ANY OTHER PURPOSE. NPS PROPERTY CONSULTANTS LTD ACCEPT NO LIABILITY FOR THE USE OF THIS DRAWING OTHER THAN THE PURPOSE FOR WHICH IT WAS INTENDED IN CONNECTION WITH THIS PROJECT AS RECORDED ON THE TITLE BLOCK FIELDS 'PURPOSE FOR ISSUE' AND 'FILE STATUS CODE'.
2. THIS DRAWING MAY NOT BE REPRODUCED IN ANY FORM WITHOUT PRIOR WRITTEN AGREEMENT.
3. DO NOT SCALE FROM THE DRAWING. USE WRITTEN DIMENSIONS ONLY.
4. DRAWING SHALL BE READ IN CONJUNCTION WITH ALL SPECIFICATIONS / SCOPE OF WORKS / REPORTS.

NOTE: HATCHED AREAS NOT IN SCOPE. ALL UNITS THAT ARE NOT IN SCOPE, THE EXISTING SERVICES ARE TO REMAIN AND UNINTERRUPTED. ANY SERVICES WORKS RELATED TO UNITS OCCUPIED OR UNITS NOT IN SCOPE, TENANT / CLIENT ARE TO BE ADVISED OF WORKS IN ADVANCE IN WRITING.

FIRST ISSUE							
P1	REV	DRAWN	DATE	CHECKED	DATE	APPROVED	DATE



CLIENT
London Borough of Waltham Forest

PROJECT
Hatherley Mews Refurbishment Project
Walthamstow E17 4QP

TITLE
Proposed Small Power Layout
Ground Floor

SCALES	DISCIPLINE	PROJECT NUMBER
1:100	ELECTRICAL ENG	116233

DRAWING NUMBER	REV CODE	
EVO-ZZ-00-DR-E-005	P 1	
STATUS CODE	PURPOSE OF ISSUE	DRAWN BY
S0	INFORMATION	IW