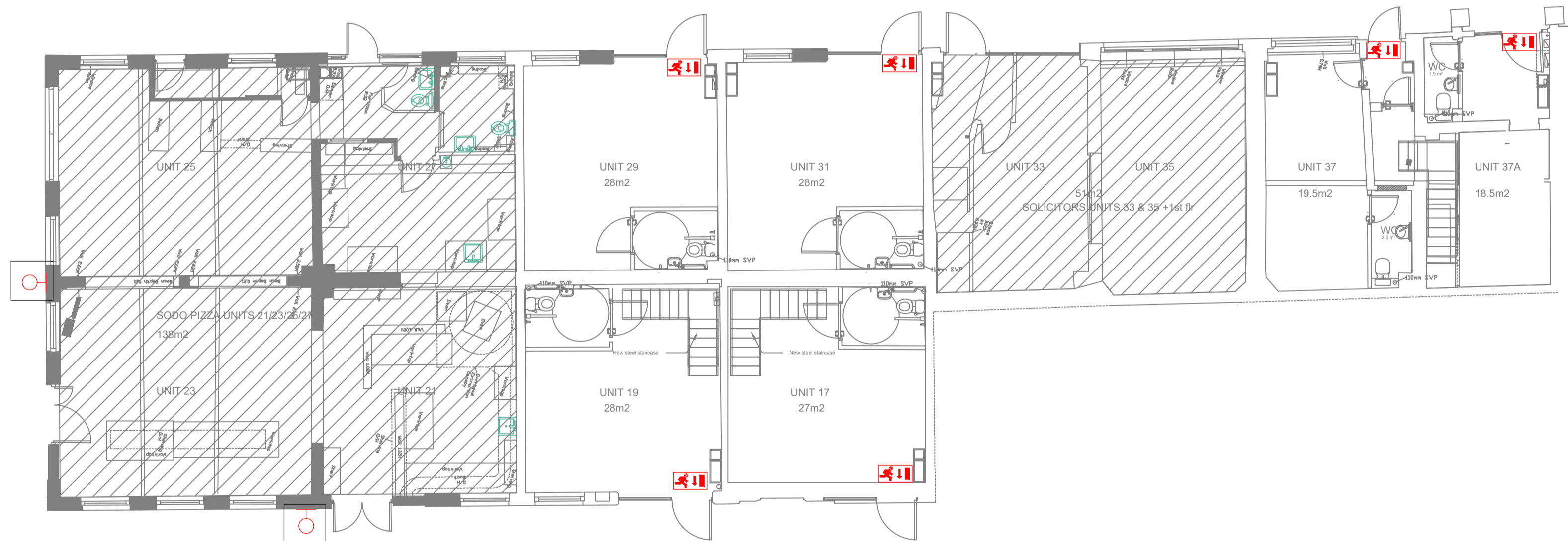
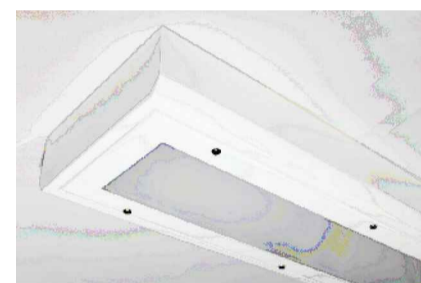
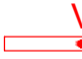






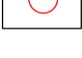


CONTINUATION LINE

PROPOSED LIGHTING FOR UNDER CROFT



LEGEND

-  1200mm LONG WEATHERPROOF VANDAL RESISTANT LINEAR LED LIGHT FITTING WITH INBUILT PIR/DAYLIGHT REGULATING SENSOR
-  SURFACE MOUNTED SQUARE SHAPE LED LIGHT FITTING
-  SURFACE MOUNTED LED LIGHT FITTING C/W PIR/DAYLIGHT REGULATING SENSOR AND DIFFUSER
-  SURFACE MOUNTED LED LIGHT FITTING C/W PIR/REGULATING SENSOR AND DIFFUSER
-  SURFACE MOUNTED NON MAINTAINED TYPE EMERGENCY EXIT SIGN LUMINAIRE C/W 3HR INTEGRAL BATTERY SUPPLY UNIT (LEGEND TO SUIT LOCATION) ('VOYAGER' TYPE FROM 'THORN' LIGHTING OR EQUIVALENT)
-  'E' DENOTES INTERGRAL EMERGENCY VERSION OF THE ABOVE LIGHT FITTINGS
-  CEILING RECESSED PIR/DAYLIGHT REGULATING SENSOR
-  EXISTING HIGH LEVEL WALL MOUNTED LANTERN TYPE LIGHT FITTING - SHOWN FOR CLARITY (MAINTAINED BY LBWF/HIGHWAYS TEAM)

THIS DRAWING IS PRODUCED FOR USE IN THIS PROJECT ONLY AND MAY NOT BE USED FOR ANY OTHER PURPOSE. NPS PROPERTY CONSULTANTS LTD ACCEPT NO LIABILITY FOR THE USE OF THIS DRAWING OTHER THAN THE PURPOSE FOR WHICH IT WAS INTENDED IN CONNECTION WITH THIS PROJECT AS RECORDED IN THE 'PURPOSE FOR ISSUE' AND 'FILE STATUS CODE'.

THIS DRAWING MAY NOT BE REPRODUCED IN ANY FORM WITHOUT PRIOR WRITTEN AGREEMENT OF NPS PROPERTY CONSULTANTS LTD.

© CROWN COPYRIGHT AND DATABASE RIGHTS 2024 ORDINANCE SURVEY LICENCE NUMBER: -

Notes:

1. THIS DRAWING IS PRODUCED FOR USE IN THIS PROJECT ONLY AND MAY NOT BE USED FOR ANY OTHER PURPOSE. NPS PROPERTY CONSULTANTS LTD ACCEPT NO LIABILITY FOR THE USE OF THIS DRAWING OTHER THAN THE PURPOSE FOR WHICH IT WAS INTENDED IN CONNECTION WITH THIS PROJECT AS RECORDED ON THE TITLE BLOCK FIELDS 'PURPOSE FOR ISSUE' AND 'FILE STATUS CODE'.
2. THIS DRAWING MAY NOT BE REPRODUCED IN ANY FORM WITHOUT PRIOR WRITTEN AGREEMENT.
3. DO NOT SCALE FROM THE DRAWING. USE WRITTEN DIMENSIONS ONLY.
4. DRAWING SHALL BE READ IN CONJUNCTION WITH ALL SPECIFICATIONS / SCOPE OF WORKS / REPORTS.

NOTE: HATCHED AREAS NOT IN SCOPE. ALL UNITS THAT ARE NOT IN SCOPE, THE EXISTING SERVICES ARE TO REMAIN AND UNINTERRUPTED. ANY SERVICES WORKS RELATED TO UNITS OCCUPIED OR UNITS NOT IN SCOPE, TENANT / CLIENT ARE TO BE ADVISED OF WORKS IN ADVANCE IN WRITING.

FIRST ISSUE

P1	REV	DRAWN	DATE	CHECKED	DATE	APPROVED	DATE

**EVOLVE**

A PARTNERSHIP BETWEEN  
WALTHAM FOREST COUNCIL AND NORSE CONSULTING

CLIENT

London Borough of Waltham Forest

PROJECT

Hatherley Mews Refurbishment Project  
Walthamstow E17 4QP

TITLE

Proposed Lighting Layout  
Ground Floor

SCALES	DISCIPLINE	PROJECT NUMBER
1:100	ELECTRICAL ENG	116233

DRAWING NUMBER	REV CODE
EVO-ZZ-00-DR-E-007	P 1

STATUS CODE	PURPOSE OF ISSUE	DRAWN BY
S0	INFORMATION	MA

CONTINUATION LINE

