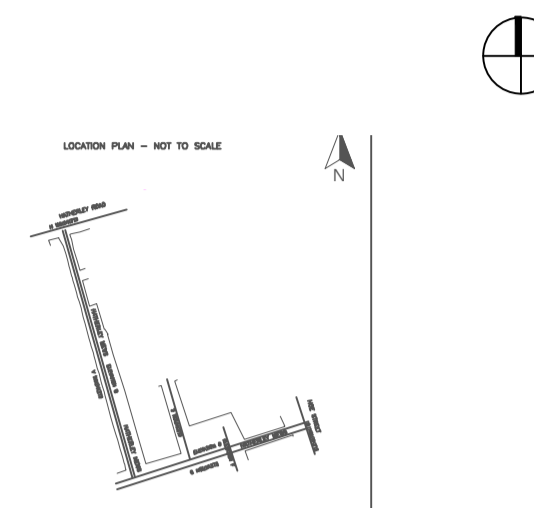


THIS DRAWING IS PRODUCED FOR USE IN THIS PROJECT ONLY AND MAY NOT BE USED FOR ANY OTHER PURPOSE. NPS PROPERTY CONSULTANTS LTD ACCEPTS NO LIABILITY FOR THE USE OF THIS DRAWING OTHER THAN THE PURPOSE FOR WHICH IT WAS INTENDED IN CONNECTION WITH THIS PROJECT AS RECORDED IN THE 'PURPOSE FOR ISSUE' AND 'FILE STATUS CODE'. THIS DRAWING MAY NOT BE REPRODUCED IN ANY FORM WITHOUT PRIOR WRITTEN AGREEMENT. © CROWN COPYRIGHT AND DATABASE RIGHTS 2019 ORDNANCE SURVEY LICENCE NUMBER: 100019340.

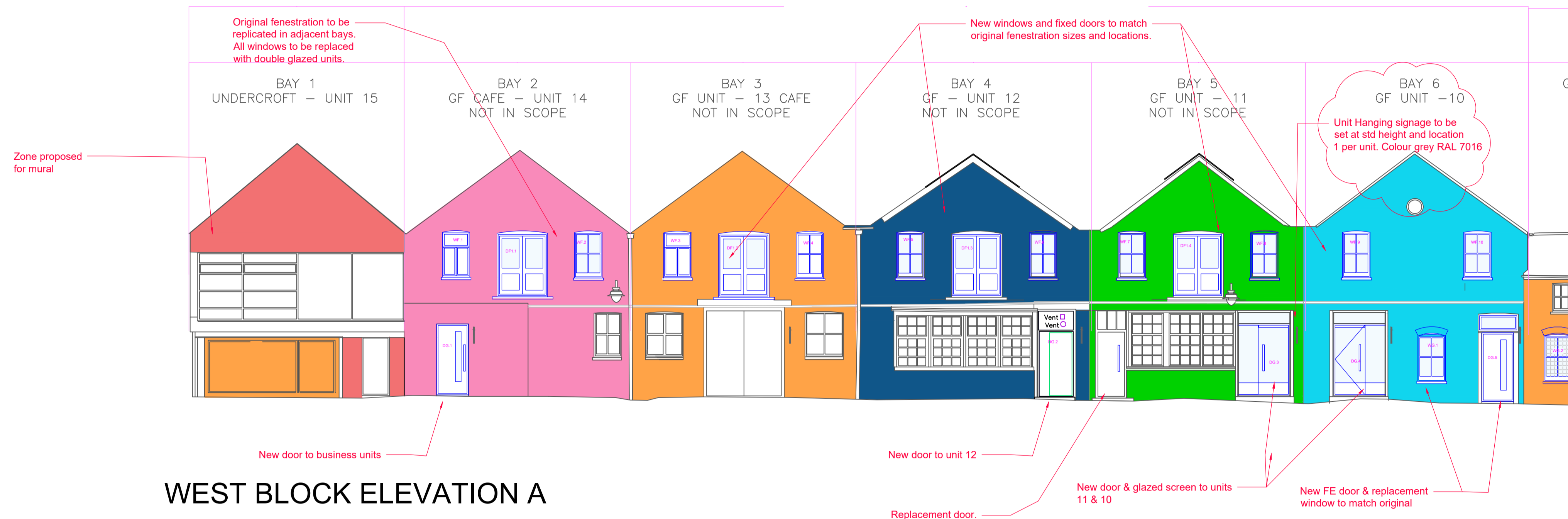
KEY PLAN



Notes:

- Notes
- Painting to elevations as indicated
- Replacement windows
- Replacement doors
- New glazed shopfronts
- Replacement signage
- New CCTV cameras

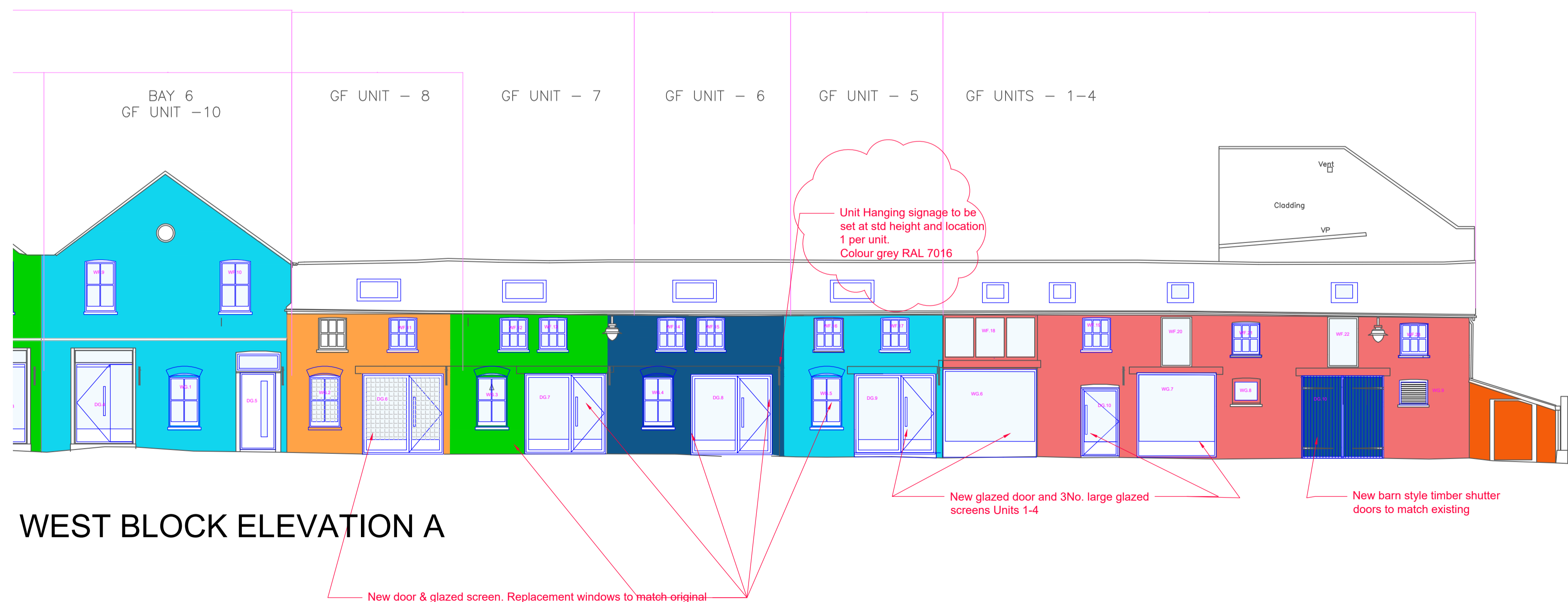
1F YOGA – NOT IN SCOPE 1F – BUSINESS UNITS 1F – BUSINESS UNITS 1F – BUSINESS UNITS 1F – BUSINESS UNITS 1F – BUSINESS UNITS



ELEVATION CONTINUED BELOW

WEST BLOCK ELEVATION A

1F – BUSINESS UNITS 1F – UNIT 7 1F UNIT – 6 1F UNIT – 5 1F UNITS – 1-4



WEST BLOCK ELEVATION A

Planning Issue : updated following Highways comments Signage shown						
P2	STE	22.08.24	DA	22.08.24	RA	22.08.24
Planning Issue						
P1	STE	20.08.24	DA	20.08.24	RA	20.08.24
REV	DRAWN	DATE	CHECKED	DATE	APPROVED	DATE



Evolve Norse
280 Fifers Lane, Norwich, NR6 6EQ
Tel: 01603 894100 web: www.norsegroup.co.uk

CLIENT
London Borough of Waltham Forest

PROJECT
Hatherley Mews, E17 4QP
Remodelling Work

TITLE
Proposed Elevations
Sheet 1 of 3

SCALE	DISCIPLINE	PROJECT NUMBER
1:100	Architect	116233
DRAWING NUMBER	REV CODE	
EVO-ZZ-XX-D-A-040	P2	
STATUS CODE	PURPOSE OF ISSUE	Drawn by Approved by
S2	Planning Approval	S.T.E. by DA RA