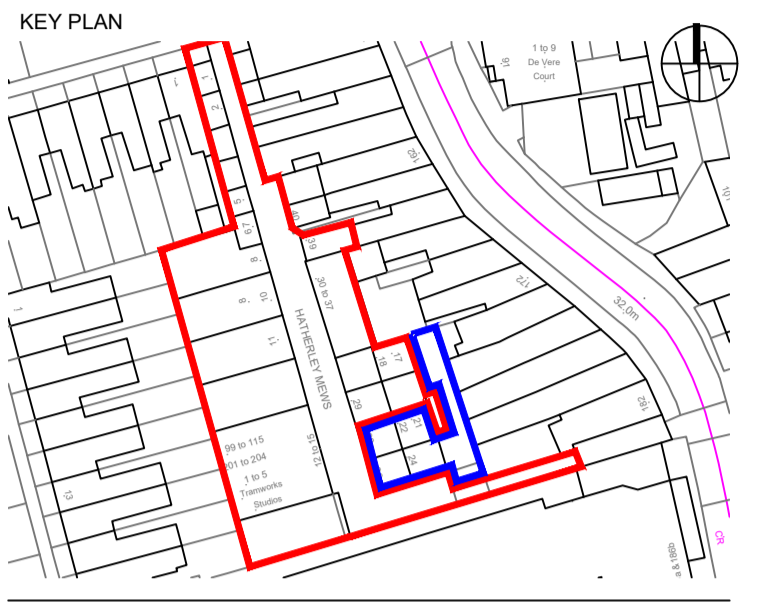


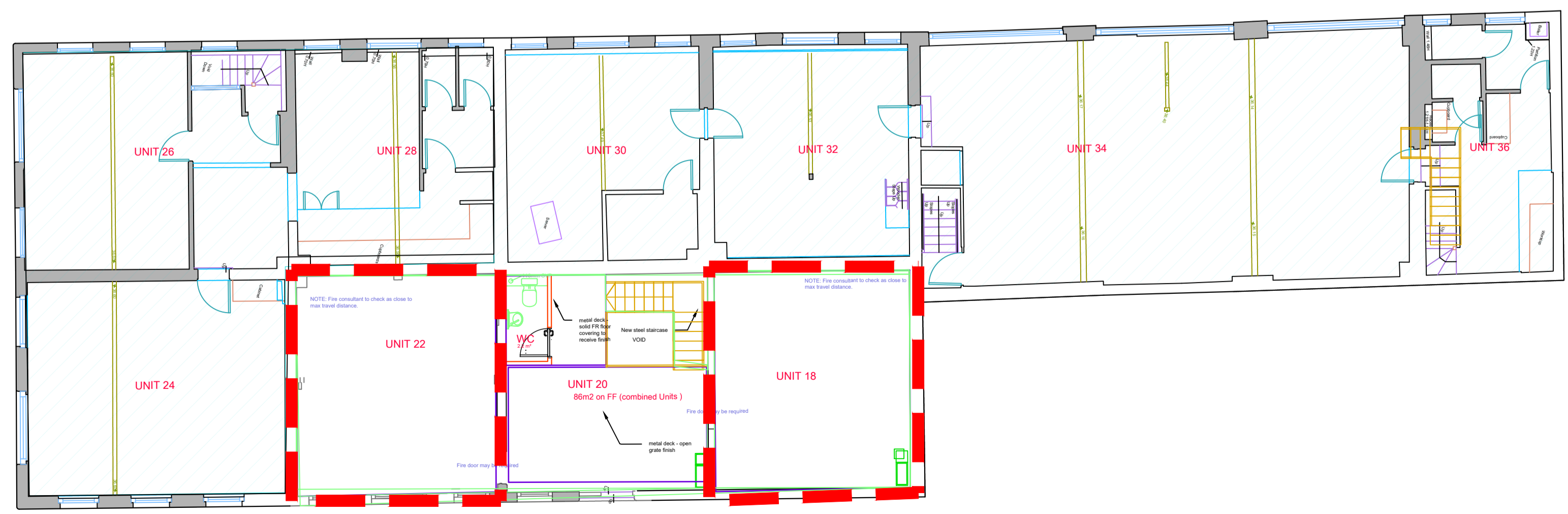
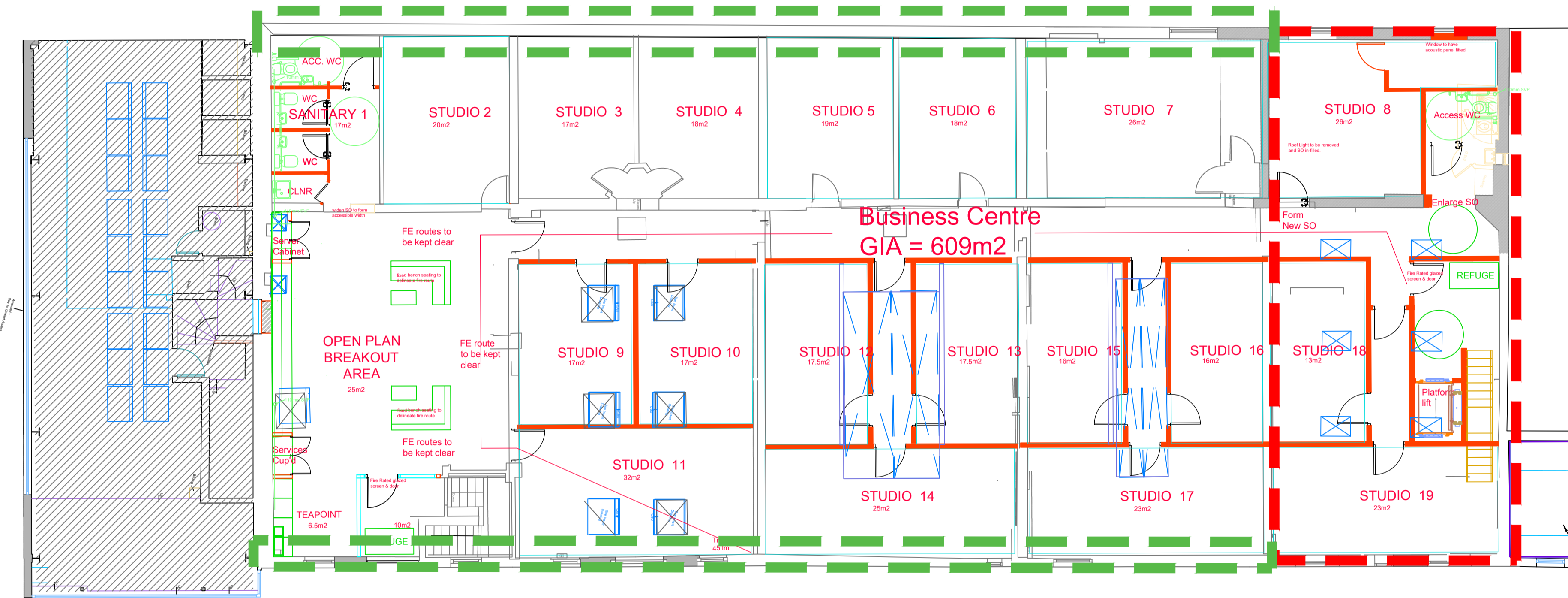
THIS DRAWING IS PRODUCED FOR USE IN THIS PROJECT ONLY AND MAY NOT BE USED FOR ANY OTHER PURPOSE. NPS PROPERTY CONSULTANTS LTD ACCEPTS NO LIABILITY FOR THE USE OF THIS DRAWING OTHER THAN THE PURPOSE FOR WHICH IT WAS INTENDED IN CONNECTION WITH THIS PROJECT AS RECORDED IN THE 'PURPOSE FOR ISSUE' AND 'FILE STATUS CODE'. THIS DRAWING MAY NOT BE REPRODUCED IN ANY FORM WITHOUT PRIOR WRITTEN AGREEMENT.

© CROWN COPYRIGHT AND DATABASE RIGHTS 2019 ORDNANCE SURVEY LICENCE NUMBER: 100019340.



Notes:

- Key
- Change of use from residential to commercial and changes to facade /windows/doors
  - Changes to facade/windows/doors
  - Units occupied currently out of scope other than shop fronts, M&E services and compliance



Planning Issue					
REV	ST/E	DATE	CHECKED	DATE	APPROVED
P1	ST/E	15.05.24	DA	15.05.24	RA
REV	DRAWN	DATE	CHECKED	DATE	APPROVED

# EVOLVE

A PARTNERSHIP BETWEEN  
WALTHAM FOREST COUNCIL AND NORSE CONSULTING

Evolve Norse  
280 Filers Lane, Norwich, NR8 6EQ  
Tel: 01603 894100 web: www.norsegroup.co.uk

CLIENT  
London Borough of Waltham Forest

PROJECT  
Hatherley Mews Remodelling Project  
Walthamstow, London E17 4QP

TITLE  
Proposed First Floor Plan  
(Sheet 1 of 2)

SCALE 1:100 DISCIPLINE Architect PROJECT NUMBER 116233

DRAWING NUMBER EVO-ZZ-01-D-A-027 REV CODE P1

STATUS CODE S2	PURPOSE OF ISSUE Planning Approval	Drawn by S.T.E. Checked by DA	Approved by RA
----------------	------------------------------------	----------------------------------	----------------