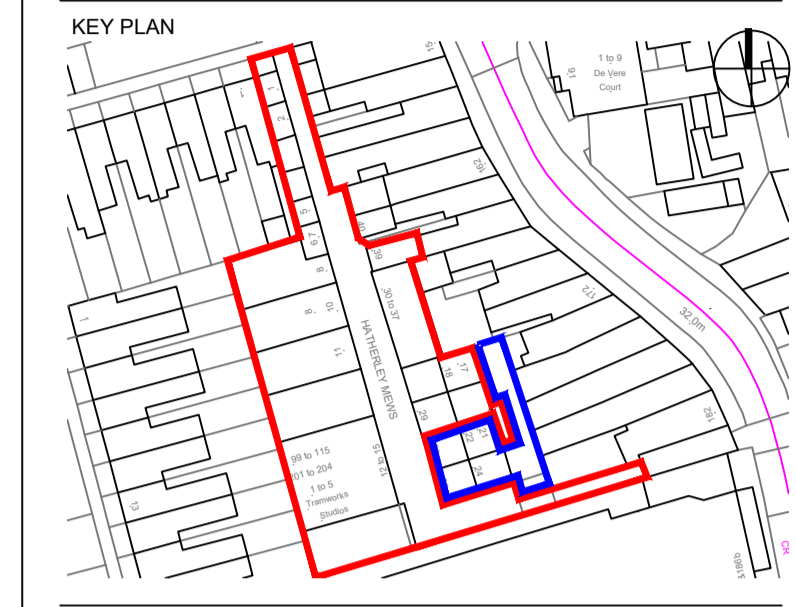


THIS DRAWING IS PRODUCED FOR USE IN THIS PROJECT ONLY AND MAY NOT BE USED FOR ANY OTHER PURPOSE. NPS PROPERTY CONSULTANTS LTD ACCEPTS NO LIABILITY FOR THE USE OF THIS DRAWING OTHER THAN THE PURPOSE FOR WHICH IT WAS INTENDED IN CONNECTION WITH THIS PROJECT AS RECORDED IN THE 'PURPOSE FOR ISSUE' AND 'FILE STATUS CODE'. THIS DRAWING MAY NOT BE REPRODUCED IN ANY FORM WITHOUT PRIOR WRITTEN AGREEMENT.

© CROWN COPYRIGHT AND DATABASE RIGHTS 2019 ORDNANCE SURVEY LICENCE NUMBER: 100019340.

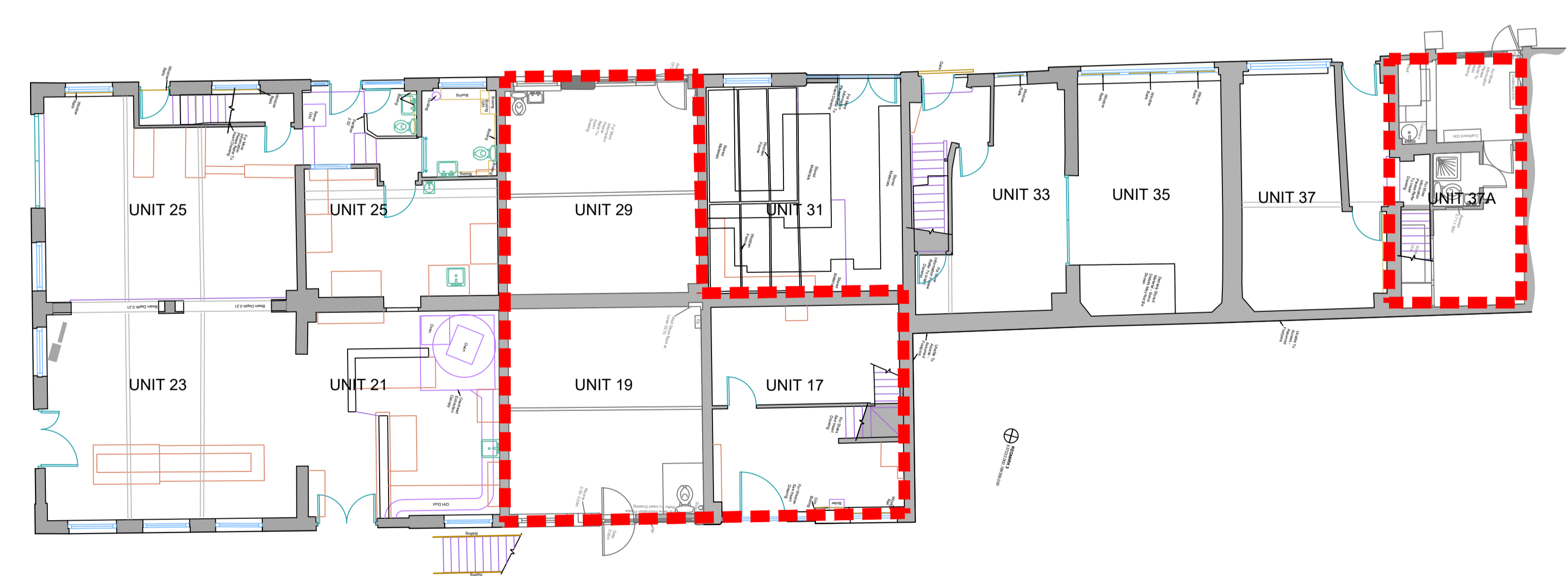


Notes:

- Key**
- Change of use from residential to commercial
  - Unit 17 28m<sup>2</sup> (GF) + 28.5m<sup>2</sup> (FF)
  - Unit 19 29m<sup>2</sup> (GF)
  - Unit 29 28m<sup>2</sup> (GF)
  - Unit 37a 18.5m<sup>2</sup> (GF)



### WEST BLOCK



### EAST BLOCK

Planning Issue						
P1	STE	16.5.24	RA	16.5.24	AS	16.5.24
REV	DRAWN	DATE	CHECKED	DATE	APPROVED	DATE



Evolve Norse  
280 Filers Lane, Norwich, NR6 6EQ  
Tel: 01603 894100 web: www.norsegroup.co.uk

CLIENT  
London Borough of Waltham Forest

PROJECT  
Hatherley Mews, E17 4QP  
Remodelling Work

TITLE  
Existing Ground Floor Plan  
(Sheet 1 of 2)

SCALE 1:100 DISCIPLINE Architect PROJECT NUMBER 116233

DRAWING NUMBER EVO-ZZ-00-D-A-005 REV CODE P1

STATUS CODE	PURPOSE OF ISSUE	Drawn by	Approved by
S2	Planning Approval	STE	RA
		Checked by	DA