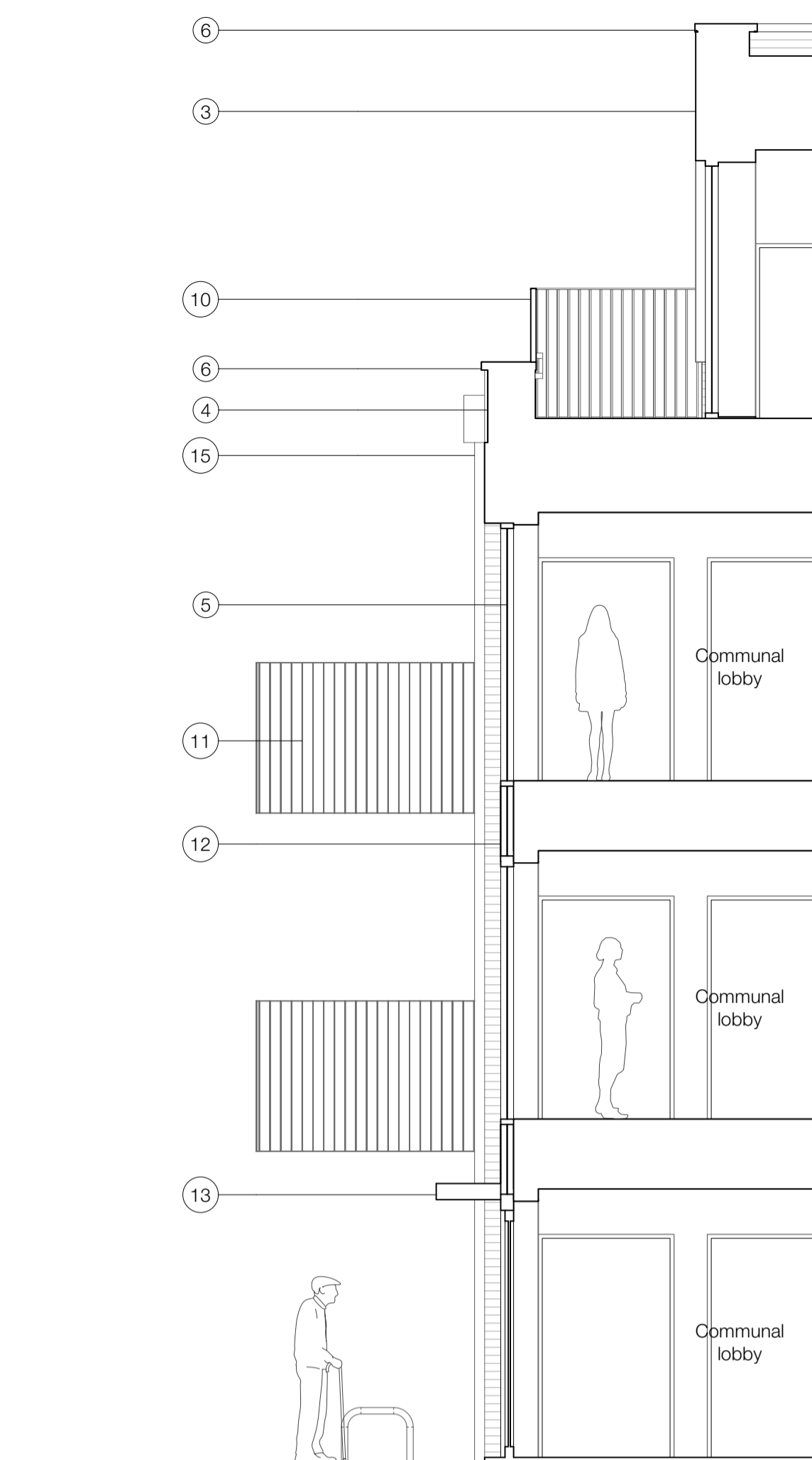
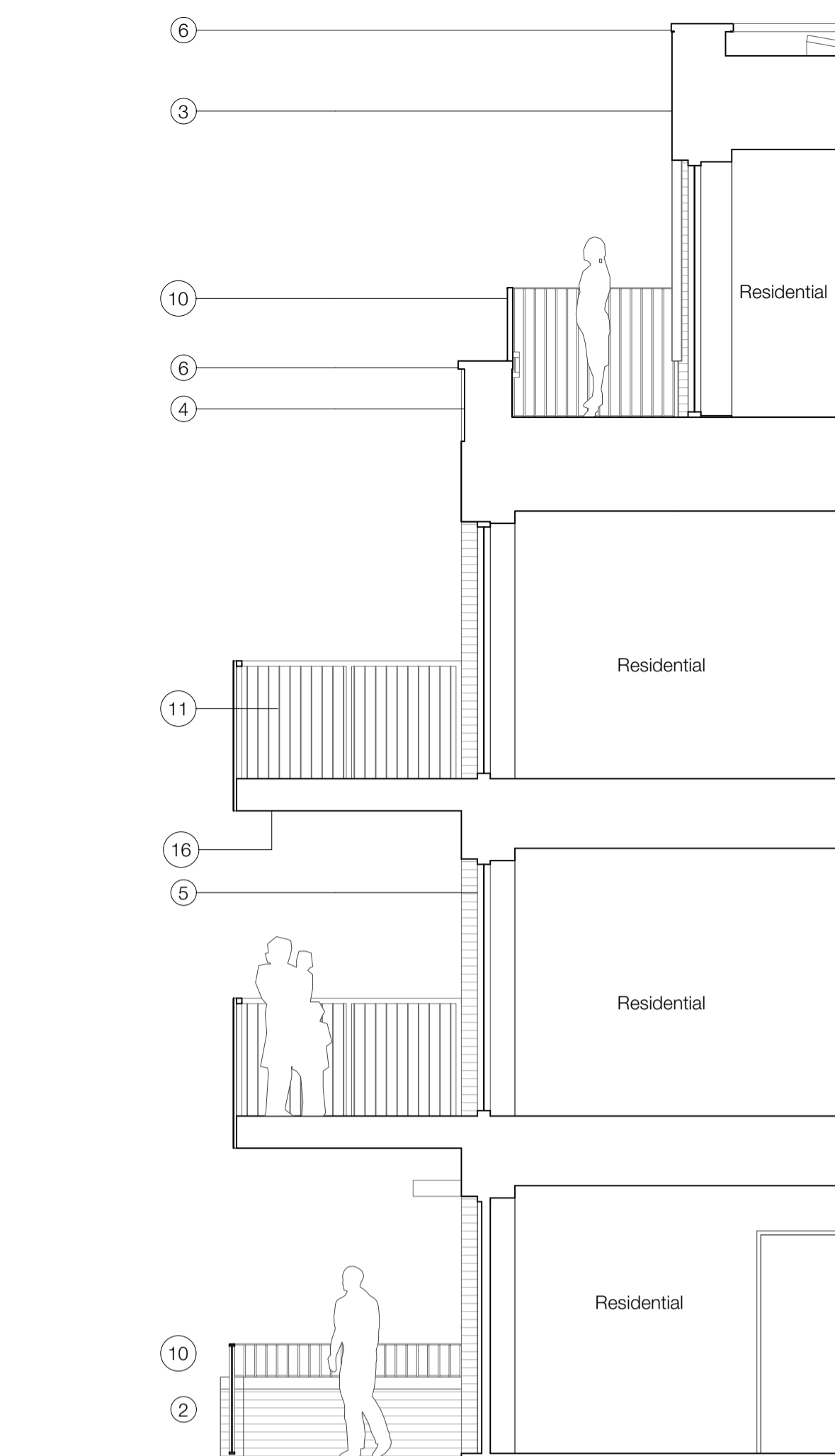




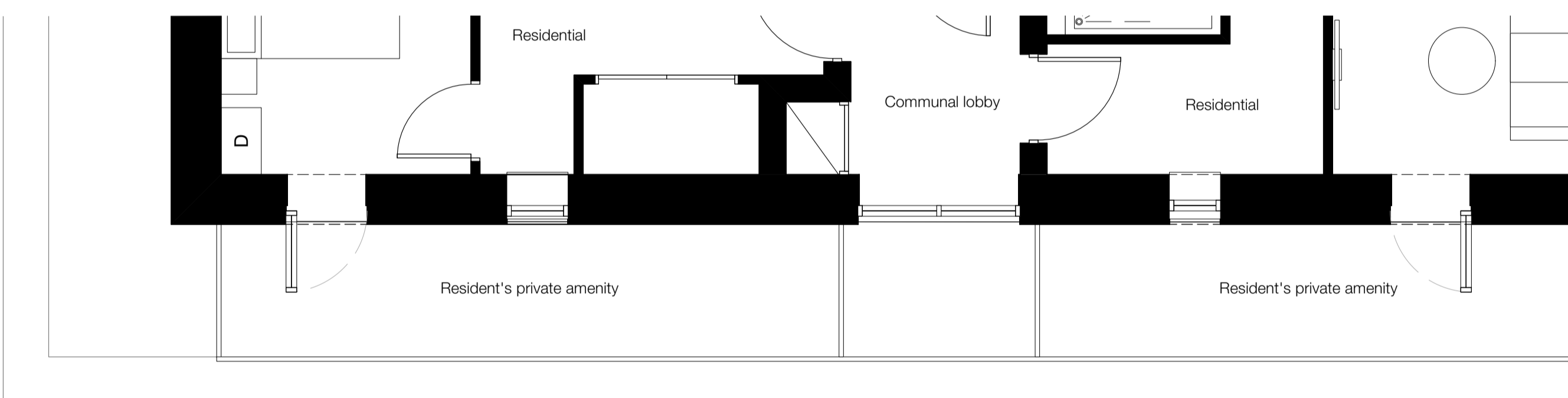
4 Block D - West Elevation



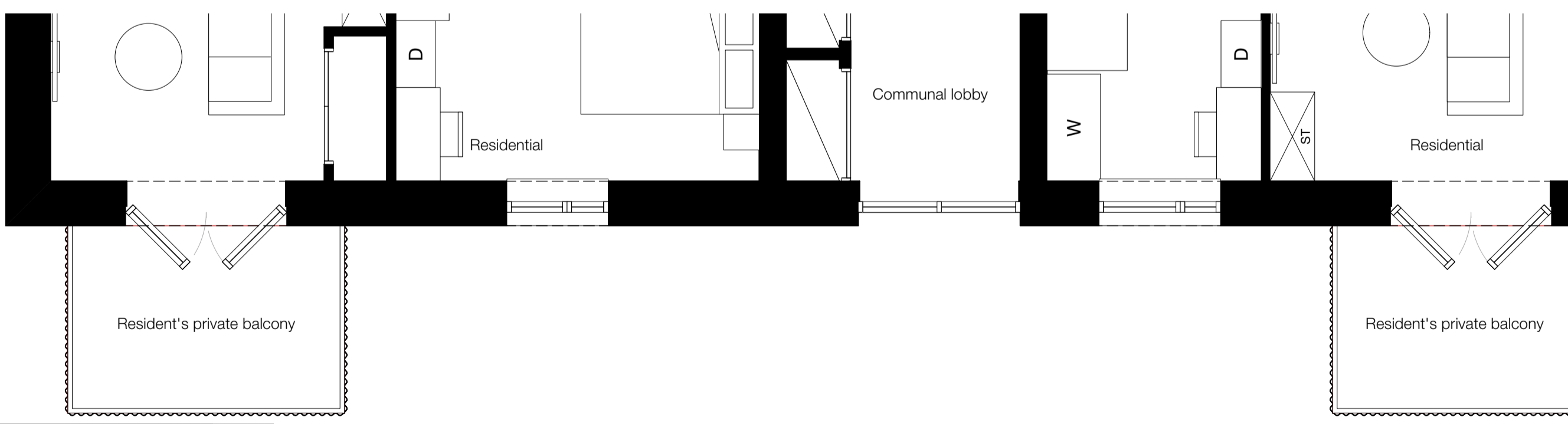
5 Section AA



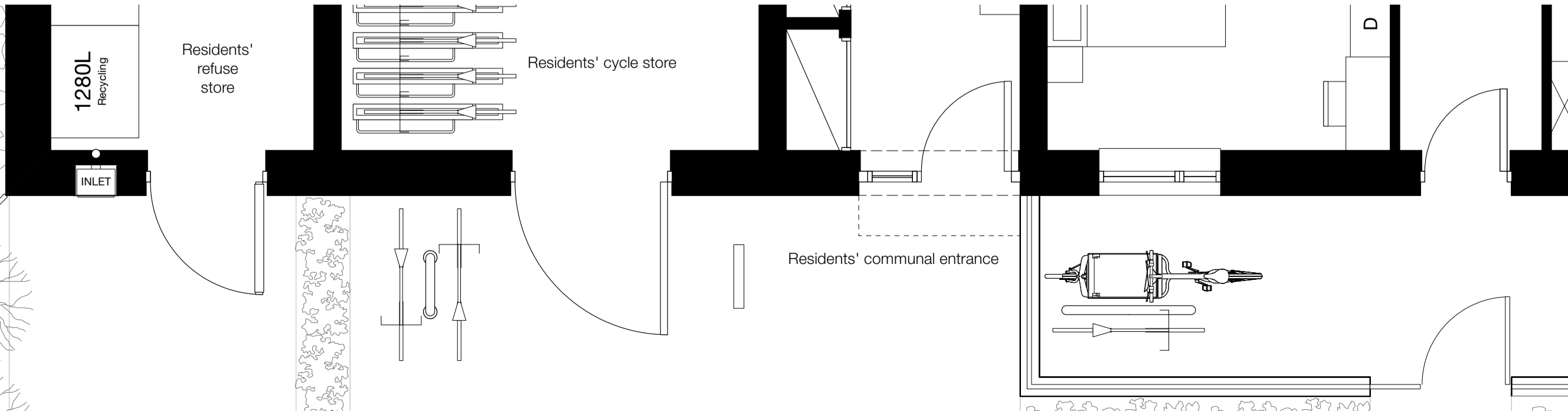
6 Section BB



3 Block D - Partial Plan - Third Floor

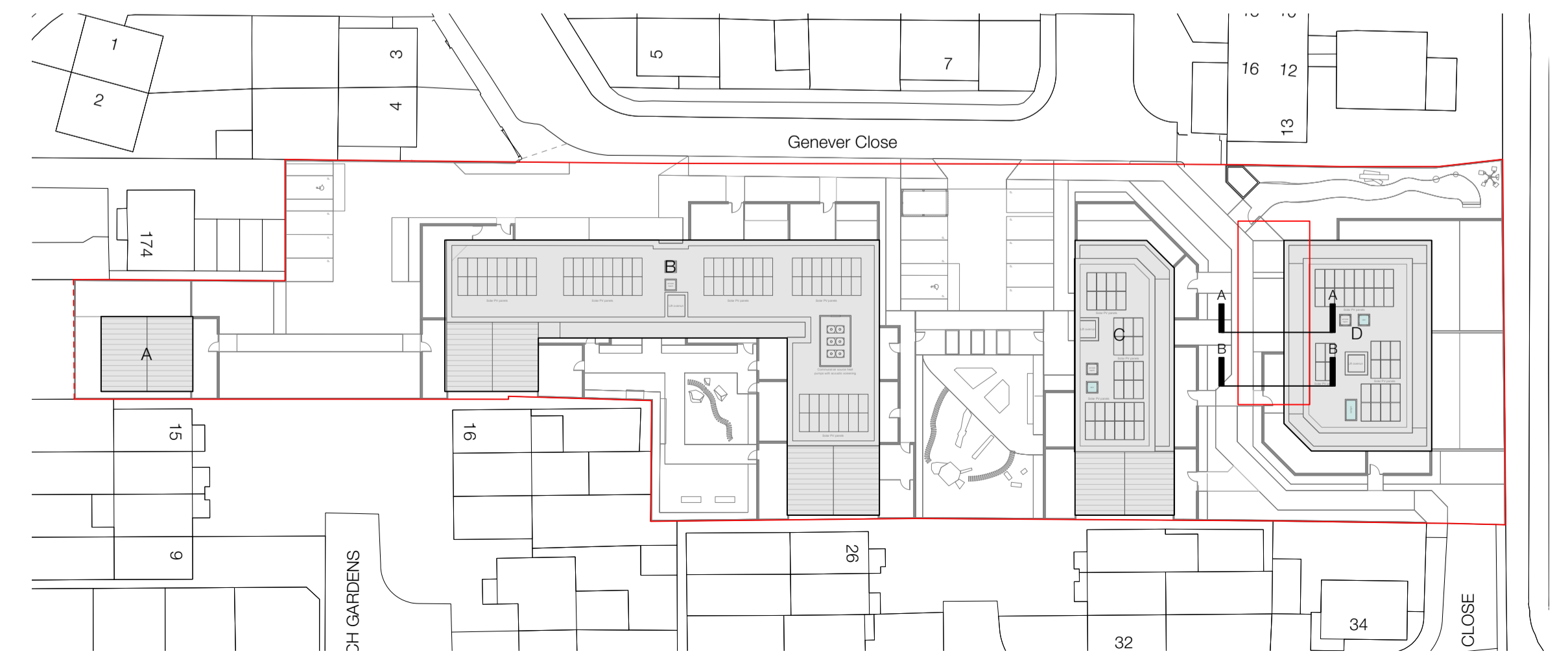


2 Block D - Partial Plan - First Floor



1 Block D - Partial Plan - Ground Floor

- Materials**
1. Brickwork Type 01: buff coloured brickwork - Vandersanden Oakhurst or similar, with light grey mortar.
 2. Boundary wall Type 01: Brickwork, bond and mortar to match Brickwork Type 01 with brick capping.
 3. Standing seam zinc cladding - VMZinc Pigmento Green.
 4. Parapet with brickwork in part recessed and projected soldier courses. Brickwork colour and mortar finish to match brickwork below parapet.
 5. PPC aluminium and timber composite window. Frame colour: light green to match zinc cladding.
 6. PPC aluminium coping. Colour: light green to match window frame colour.
 7. PPC aluminium and timber composite door. Frame and door leaf colour: light green to match window frame.
 8. PPC metal solid door with perforated screen clad to door leaf. Perforation and colour finish to match perforated screens to balcony.
 9. PPC metal louvre door. Door leaf and frame colour to match window frame.
 10. PPC metal fin railings, finish and colour to match window frame.
 11. PPC perforated metal screen with wave profile Welltec W-8/25 by Cadish MDA or similar. Panel and frame colour: light green to match window frame.
 12. PPC metal spandrel panel. Colour and finish to match window frame.
 13. PPC metal canopy: colour and finish to match window frame.
 14. Signage on metal panel. Panel finish and colour to match window and door frame.
 15. Rainwater downpipe, hopper and gutter: metal, PPC with colour to match window frame colour.
 16. PPC metal panels to soffit. Colour to match balcony screen.

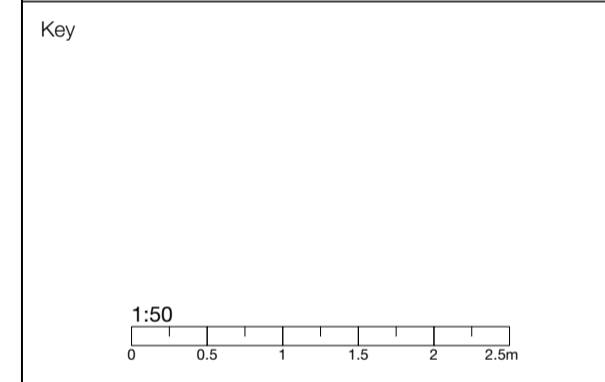


7 Key Plan

General Notes
 © Copyright Stephen Davy Peter Smith Architects 2023
 These proposals are subject to the approval of all Statutory Building Control requirements and the requirements of all Statutory Authorities and Service Providers.
 The site boundaries and surroundings are based on the following:
 • OS Map / Measured survey by Matrix Surveys
 The site boundaries are those described by the client.
 These drawings are to be read in conjunction with all other relevant documentation produced by Stephen Davy Peter Smith Architects and other consultants employed by the client.

Specific Notes

Legend



| Rev | Drawn | Notes | Date | |
|-----|---------|---------------------|----------|------|
| P1 | HL | Soffit note added | 26/09/24 | |
| PO | HL | Issued for planning | 19/01/24 | |
| P1 | HL | 26/09/24 | | |
| Rev | Checked | Date | Approved | Date |

Client
 Holdland Developments Ltd

A - APPROVED
 B - APPROVED WITH COMMENTS
 C - DO NOT USE

CLIENT APPROVAL

stephen davy architects
peter smith

Farshaw House, Farshaw Street, London N1 6HX
 Tel: 020 7739 2020 Fax: 020 7739 2021
 E-mail: sdpsa@daypsmitharchitects.co.uk
 Website: www.daypsmitharchitects.co.uk

Project
 Rear of 158-160 Chingford Mount Road
 London
 E4 9BS

Drawing Ref: 2117 - DS - 01 - ZZ - DR - A - P513 Job No: 2117
 Purpose of Issue: PLANNING Scale: 1:50 @ A1

Drawing Title:
Bay Study 3- Block D

Project Ref - Drawing No - Status - Revision
2117 - P 513 - S 2 - P 1