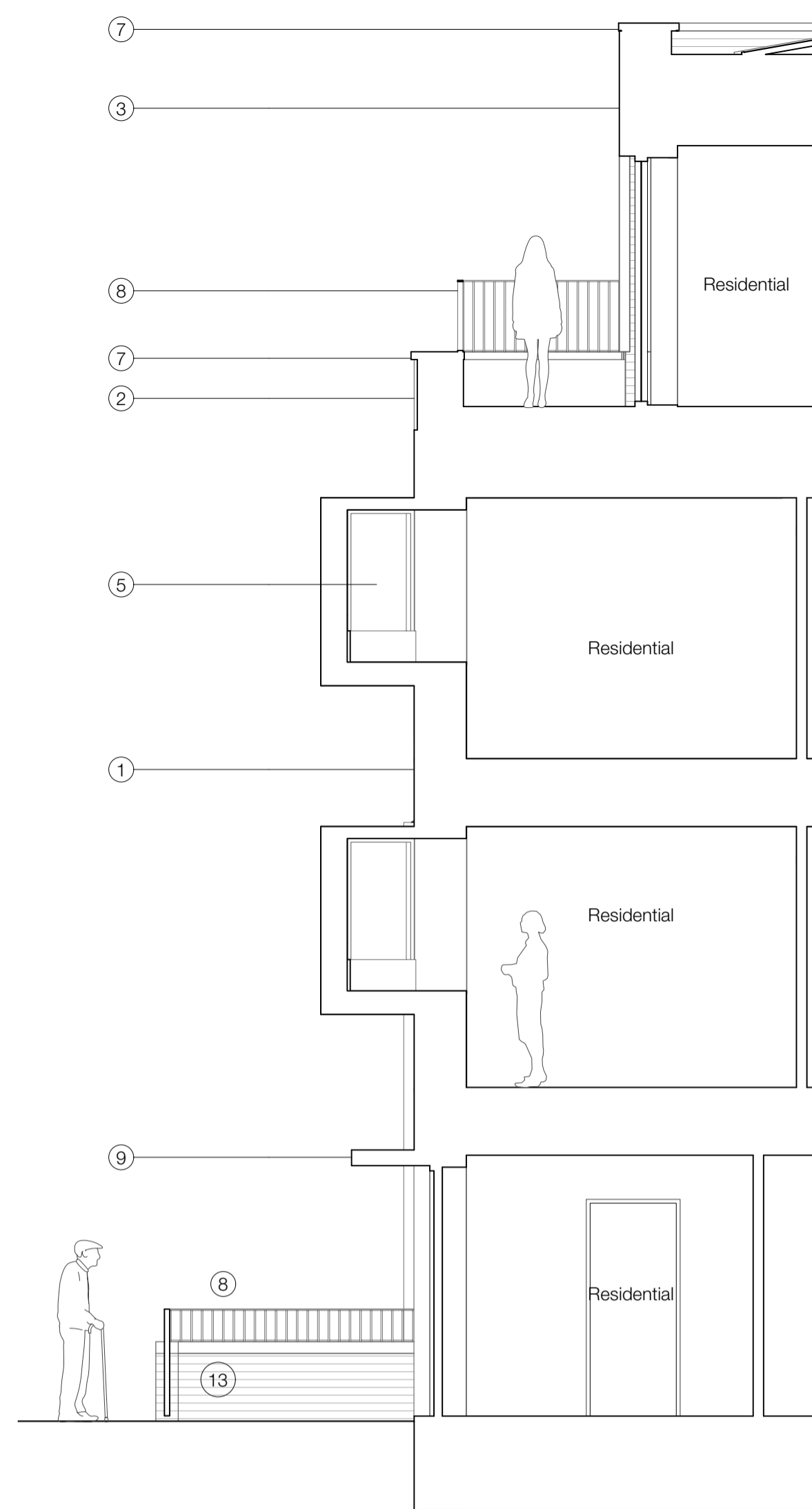
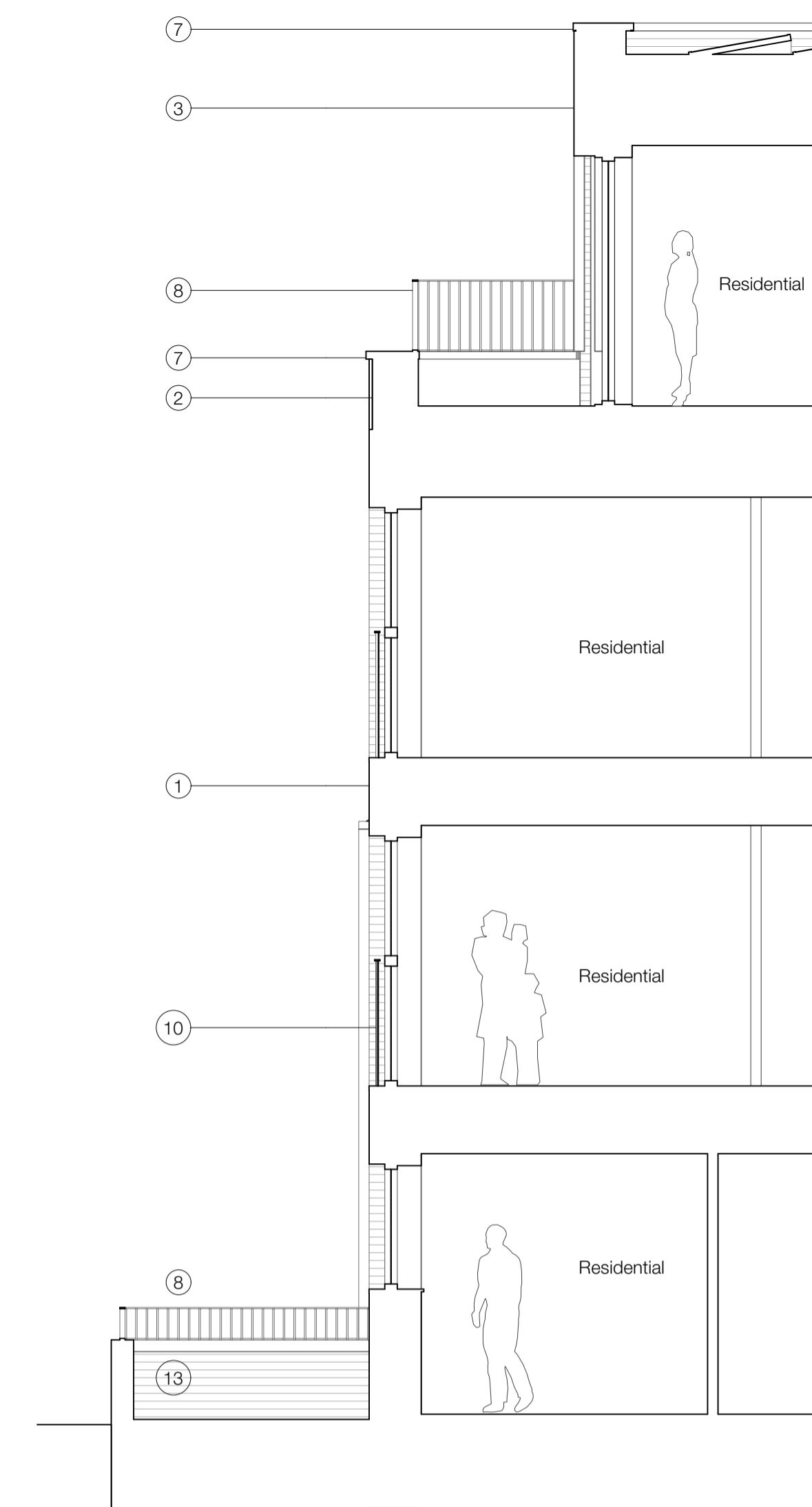




4 Block C - East Elevation



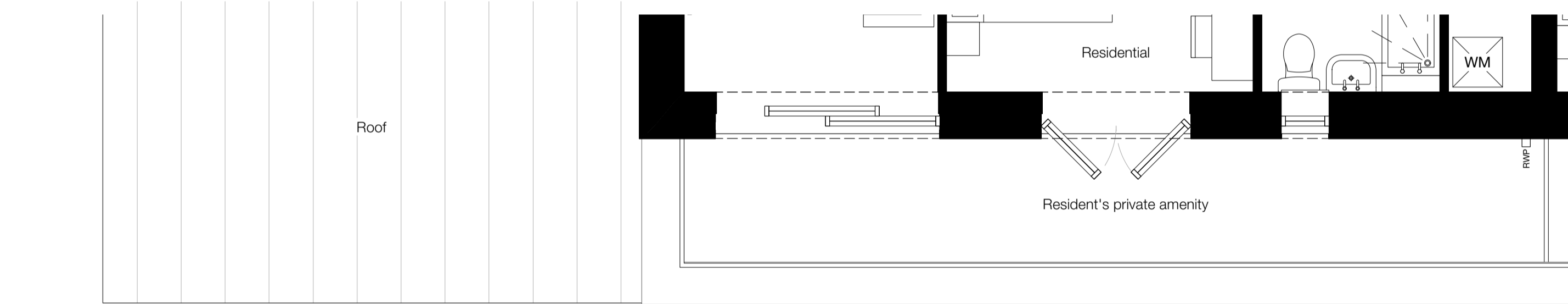
5 Section AA



6 Section BB

Materials

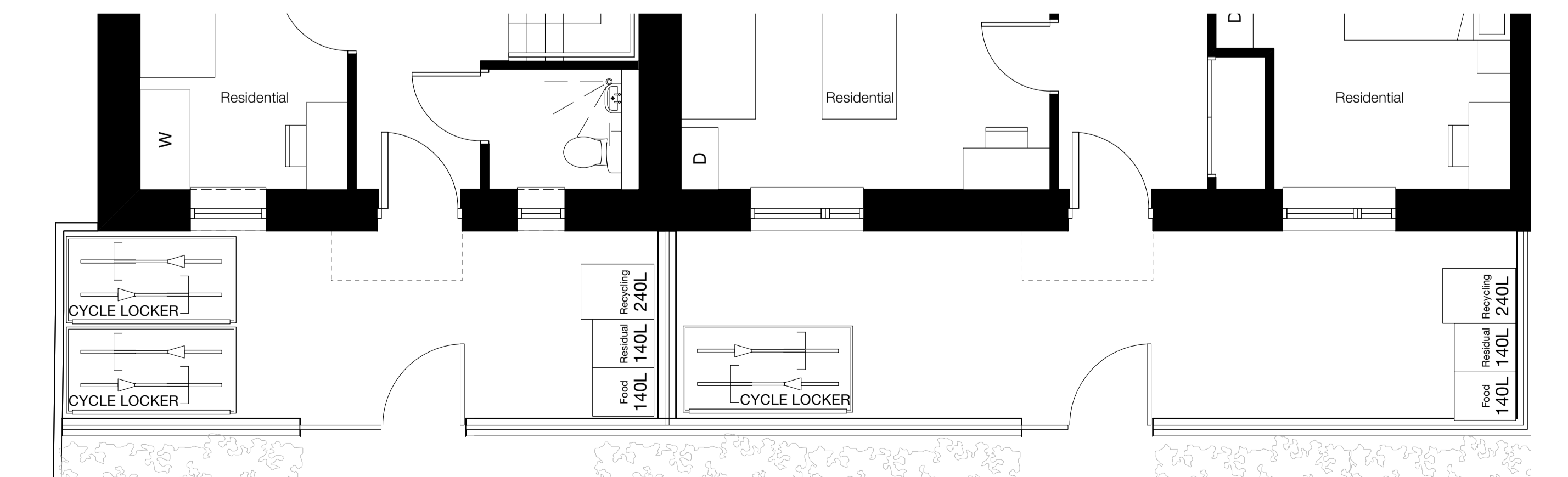
1. Brickwork Type 01: buff coloured brickwork - Vandersanden Oakhurst or similar, with light grey mortar.
2. Parapet with brickwork in part recessed and projected soldier courses. Brickwork colour and mortar finish to match brickwork below parapet.
3. Standing seam zinc cladding - VMZinc Pigmento Green.
4. PPC aluminium and timber composite window. Frame colour: light green to match zinc cladding.
5. PPC aluminium and timber composite oriel window with zinc cladding. Window finish to match other window frame. Zinc cladding to match with pitched roof and wall.
6. PPC aluminium and timber composite door. Frame and door leaf colour: light green to match window frame.
7. PPC aluminium coping. Colour: light green to match window frame.
8. PPC metal fin railings, finish and colour to match window frame.
9. PPC metal canopy; colour and finish to match window frame.
10. PPC perforated metal screen with wave profile Welltec W-8/25 by Cadish MDA or similar. Panel and frame colour: light green to match window frame.
11. Opaque glazing to window.
12. Signage on metal panel. Panel finish and colour to match window and door frame.
13. Boundary wall Type 01: Brickwork, bond and mortar to match Brickwork Type 01 with brick capping.
14. Rainwater downpipe, hopper and gutter: metal, PPC with colour to match window frame colour.



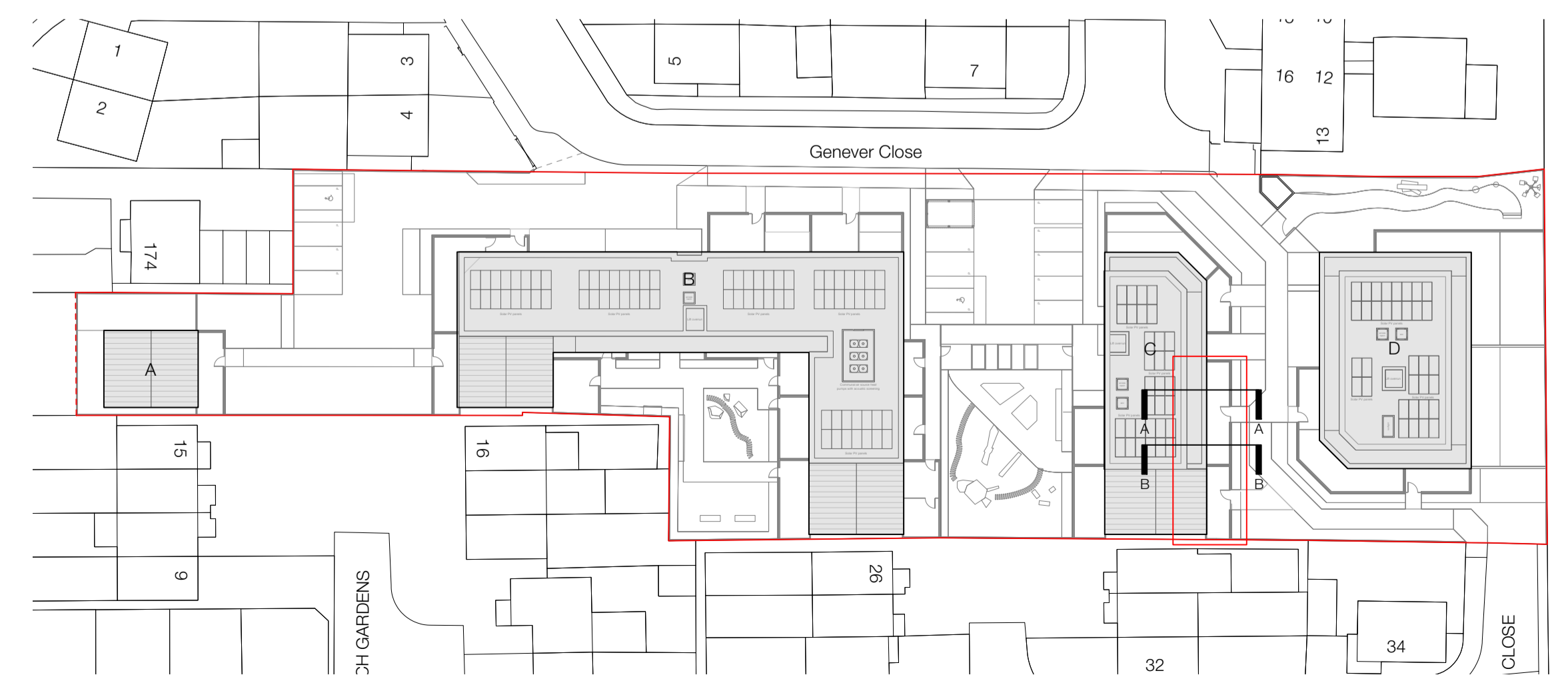
3 Block C - Partial Plan - Third Floor



2 Block C - Partial Plan - First Floor



1 Block C - Partial Plan - Ground Floor



6 Key Plan

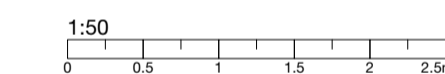
General Notes

© Copyright Stephen Davy Peter Smith Architects 2023
 These proposals are subject to the approval of all Statutory Building Control requirements and the requirements of all Statutory Authorities and Service Providers.
 The site boundaries and surroundings are based on the following:
 • OS Map / Measured survey by Matrix Surveys
 The site boundaries are those described by the client.
 These drawings are to be read in conjunction with all other relevant documentation produced by Stephen Davy Peter Smith Architects and other consultants employed by the client.

Specific Notes

Legend

Key



PO	HL	Issued for planning	19/01/24
----	----	---------------------	----------

Rev	Drawn	Notes	Date
PO	HL	19/01/24	

Rev	Checked	Date	Approved	Date
-----	---------	------	----------	------

REVISIONS

Client

Holdland Developments Ltd

- A - APPROVED
- B - APPROVED WITH COMMENTS
- C - DO NOT USE

CLIENT APPROVAL

stephen davy architects
peter smith
 Farshaw House, Farshaw Street, London N1 6HX
 Tel: 020 7759 2020 Fax: 020 7759 2021
 E-mail: sdpsa@daypsmitharchitects.co.uk
 Website: www.daypsmitharchitects.co.uk

Project
 Rear of 158-160 Chingford Mount Road
 London
 E4 9BS

Drawing Ref	Job No.
2117 - DS - 01 - ZZ - DR - A - P512	2117
Purpose of Issue	Scale
PLANNING	1:50 @ A1

Drawing Title
Bay Study 3- Block C