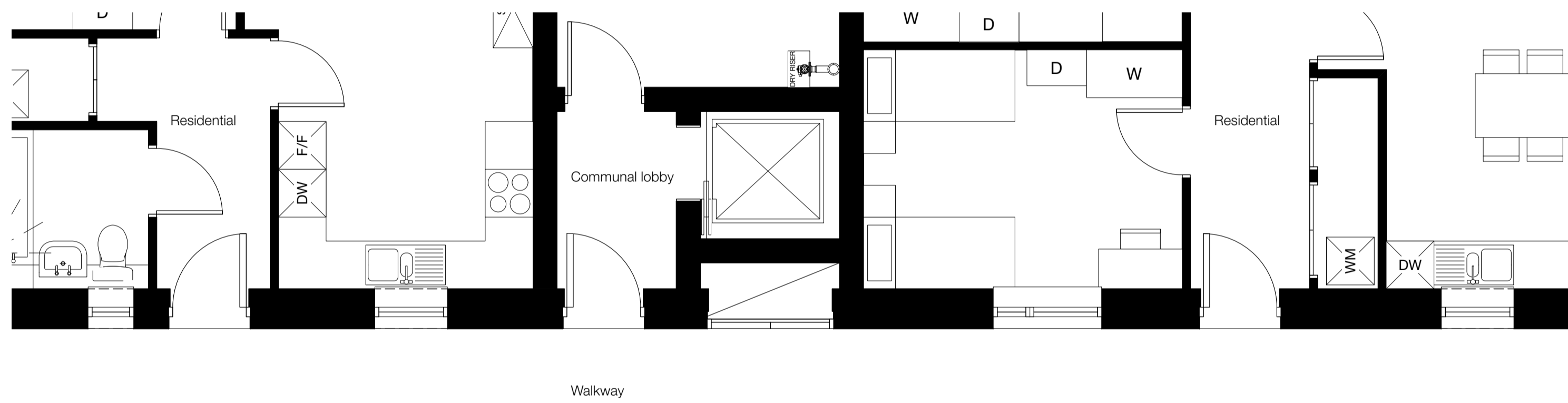
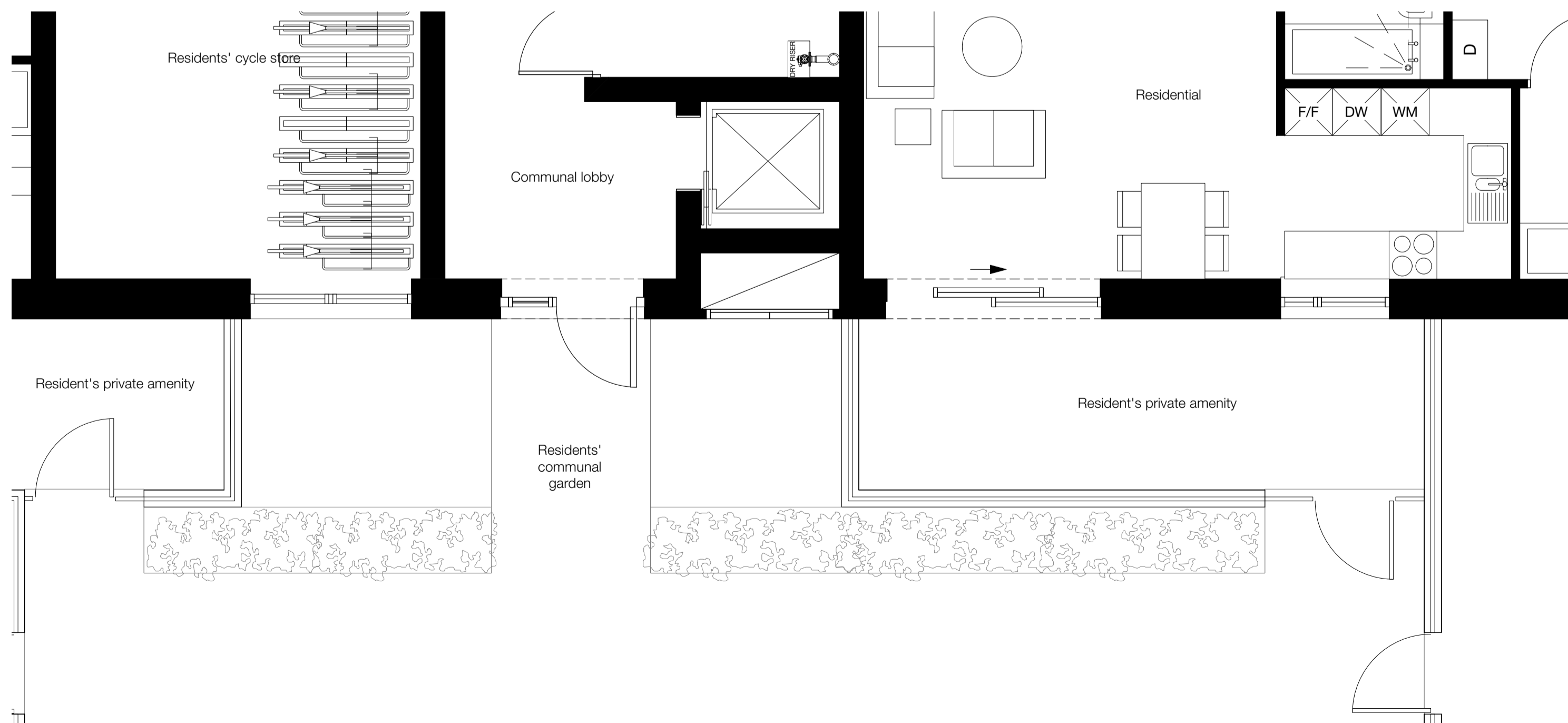




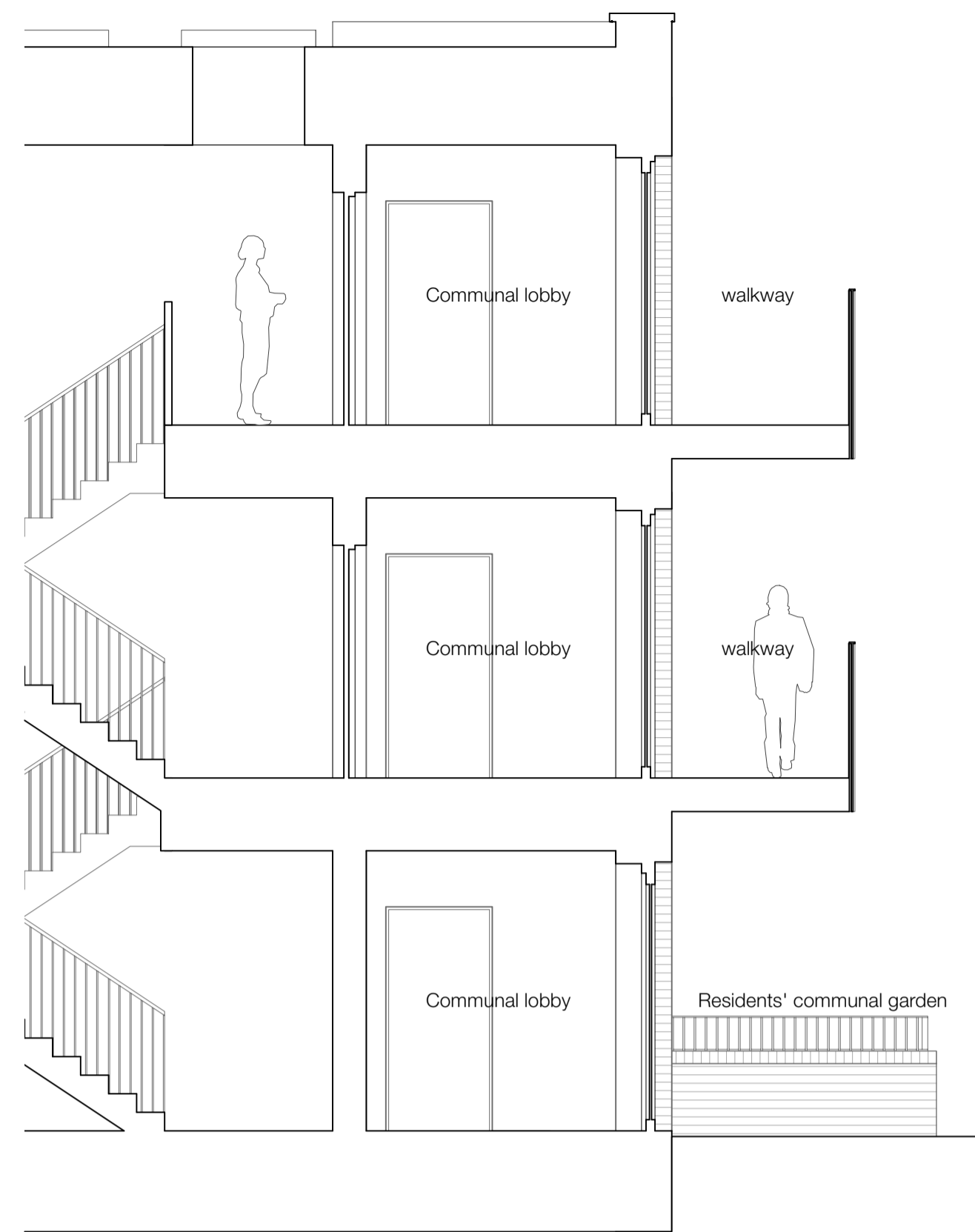
3 Block B - South Elevation



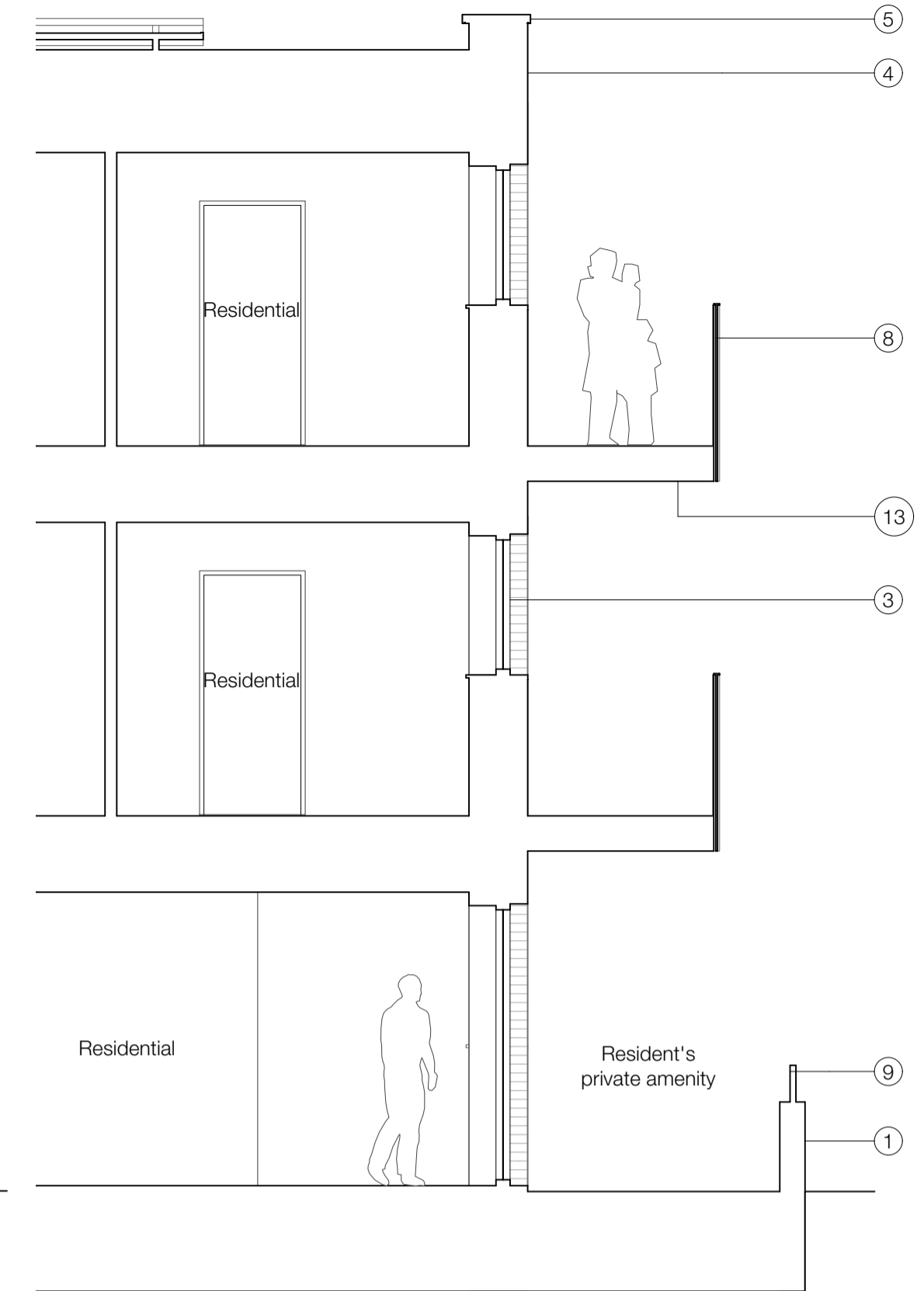
2 Block B - Partial Plan - First Floor



1 Block B - Partial Plan - Ground Floor



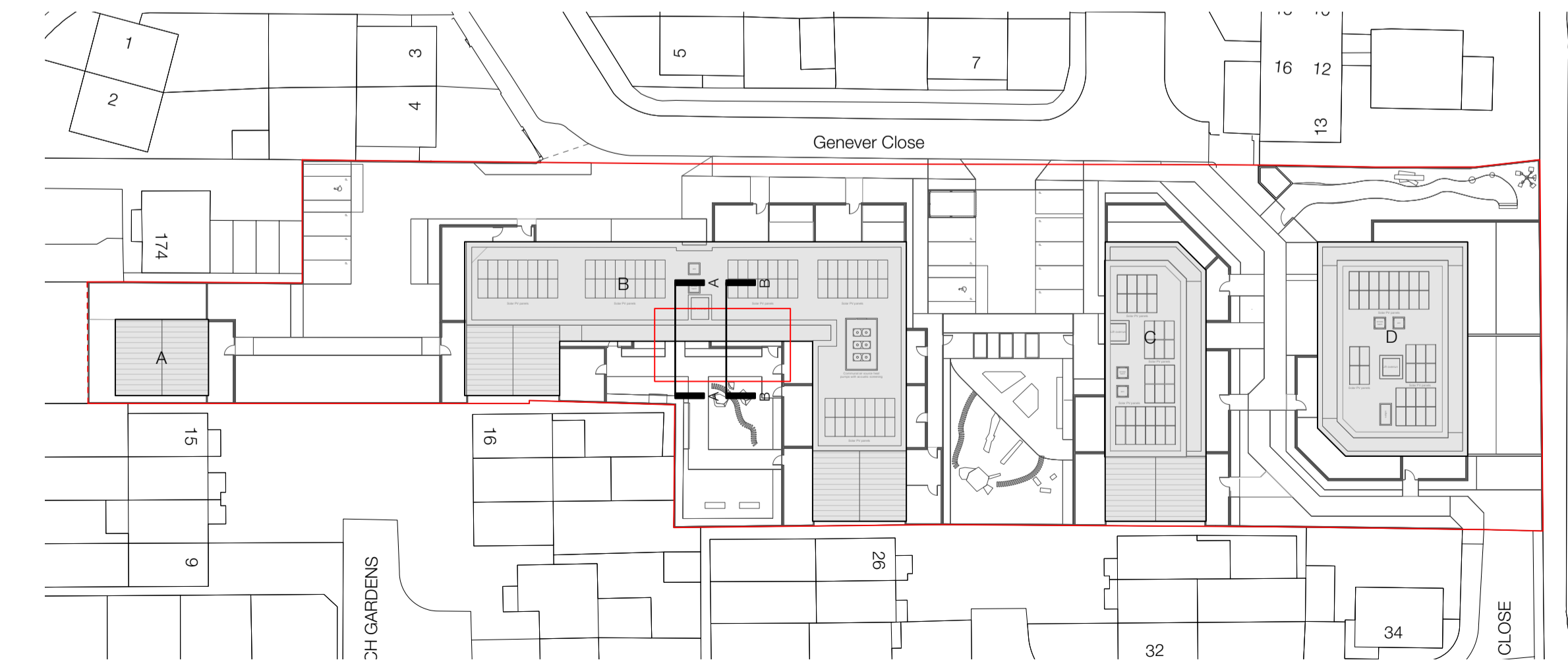
4 Section AA



5 Section BB

Materials

1. Boundary wall Type 01: Brickwork, bond and mortar to match Brickwork Type 01 with brick capping.
2. Brickwork Type 02: multi red coloured brickwork - Vandersanden Becton Multi Red or similar, with light grey mortar.
3. PPC aluminium and timber composite window. Frame colour: light green to match zinc cladding.
4. Parapet with brickwork in part recessed and projected soldier courses. Brickwork colour and mortar finish to match brickwork below parapet.
5. PPC aluminium coping. Colour: light green to match window frame colour.
6. PPC aluminium and timber composite door. Frame and door leaf colour: light green to match window frame.
7. PPC metal solid door with perforated screen clad to door leaf. Perforation and colour finish to match perforated screens to balcony.
8. PPC perforated metal screen with wave profile Walltec W-8/25 by Cadish MDA or similar. Panel and frame colour: light green to match window frame.
9. PPC metal fin railings, finish and colour to match window frame.
10. PPC metal fin railings with solid infill panels. Colour to match window and door frame.
11. Boundary wall Type 02: Brickwork, bond and mortar to match Brickwork Type 02 with brick capping.
12. Roof fascia and bargeboards: metal, PPC with colour to match window frame colour.
13. PPC metal panels to soffit. Colour to match balcony screen.



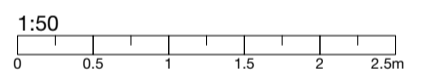
6 Key Plan

General Notes  
 © Copyright Stephen Davy Peter Smith Architects 2023  
 These proposals are subject to the approval of all Statutory Building Control requirements and the requirements of all Statutory Authorities and Service Providers.  
 The site boundaries and surroundings are based on the following:  
 • OS Map / Measured survey by Matrix Surveys  
 The site boundaries are those described by the client.  
 These drawings are to be read in conjunction with all other relevant documentation produced by Stephen Davy Peter Smith Architects and other consultants employed by the client.

Specific Notes

Legend

Key



Rev	Drawn	Notes	Date
P1	HL	26/09/24	
Rev	Checked	Date	Approved

Client  
**Holdland Developments Ltd**

- A - APPROVED
- B - APPROVED WITH COMMENTS
- C - DO NOT USE

CLIENT APPROVAL  
**stephen davy architects peter smith**  
 Farshaw House, Farshaw Street, London N1 6HX  
 Tel: 020 7759 2020 Fax: 020 7759 2021  
 E-mail: sdpsa@davysmitharchitects.co.uk  
 Website: www.davysmitharchitects.co.uk

Project  
 Rear of 158-160 Chingford Mount Road  
 London  
 E4 9BS

Drawing Ref	Job No.
2117 - DS - 01 - ZZ - DR - A - P511	2117
Purpose of Issue	Scale
PLANNING	1:50 @ A1

Drawing Title  
**Bay Study 2 - Block B**