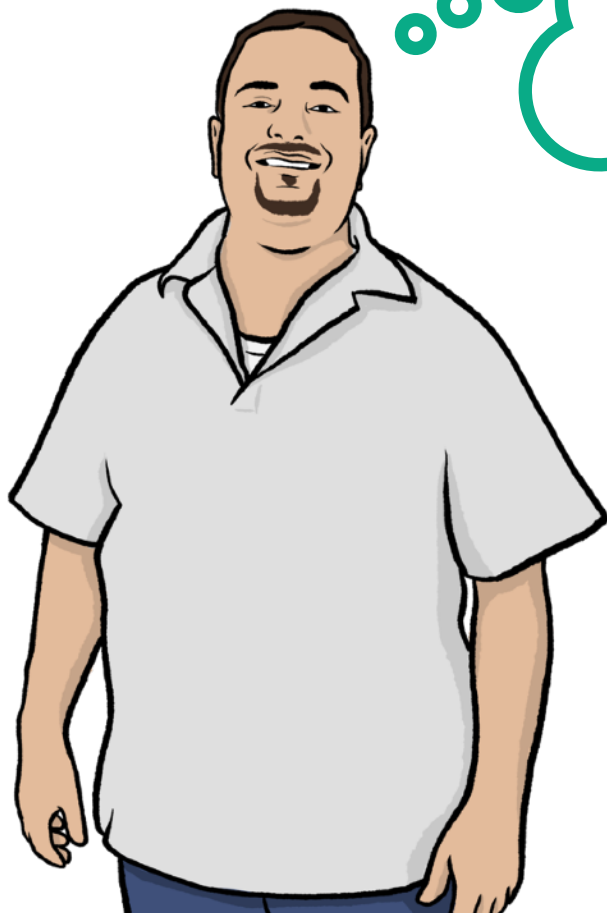




**Waltham Forest**

# **About our survey**

Tell us what you think about the future of the Markhouse Centre  
8 July to 18 August 2024



**Easy  
Read**

# Easy Read



This is an Easy Read version of another document. It may not include all of the information from that document, but it will tell you about the important parts.



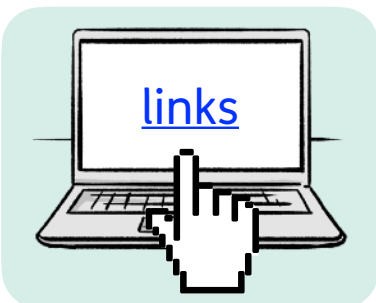
This Easy Read booklet uses easier words and pictures. Some people may still want help to read it.



Some words are in **bold** - this means the writing is thicker and darker. These are important words in the booklet.



Sometimes if a bold word is hard to understand, we will explain what it means.



[Blue and underlined](#) words show links to websites and email addresses. You can click on these links on a computer.

# What is in this booklet

|                                                                |    |
|----------------------------------------------------------------|----|
| About this booklet.....                                        | 4  |
| About the survey .....                                         | 5  |
| Day opportunities and the future of the Markhouse Centre ..... | 8  |
| Choices we could make .....                                    | 11 |
| What the Council thinks is the best choice.....                | 12 |
| If the Markhouse Centre closes .....                           | 14 |

# About this booklet



This is information from the London Borough of Waltham Forest, also known as the Council.



We would like to know what you think about our plan to close the Markhouse Centre.



The Markhouse Centre is run by the Council.



The Markhouse Centre provides **day opportunities** for people with learning disabilities.

**Day opportunities** are activities and services that people can take part in.

# About the survey

## What we are asking about



We are asking people what they think about whether to close the Markhouse Centre.



We will look at all of the information that people tell us about the Centre.



We will show the results of the survey to the **Council's Cabinet Committee**.



The **Council's Cabinet Committee** is a group of Councillors who will decide what to do with the Markhouse Centre.

## Why we are doing the survey



We want to hear from people, including those who use the centre before we decide anything.

## When the survey will happen



We will share the survey for 6 weeks, from 8 July to 18 August 2024.

## Drop in sessions



We will run some drop in sessions, where you can ask questions about the plans.



You can tell us what you think about whether to close the Markhouse Centre at the sessions.



We will also be able to help you fill in the survey.



If you already use the Markhouse Centre, you will get a letter about when the drop in sessions will be.

## Support email address



If you have any questions about the survey, you can email us on:  
[MarkhouseCentreConsultation@walthamforest.gov.uk](mailto:MarkhouseCentreConsultation@walthamforest.gov.uk)

# Day opportunities and the future of the Markhouse Centre

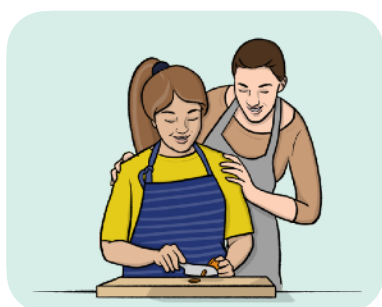
Day opportunities are an important way that we support people to:



- Learn new skills.



- Get more confident.



- Do more for themselves.



- Meet and talk to others in a safe place.



Day opportunities also let the carers of people with learning disabilities to:



- Go to work.



- Go to appointments.



- Have fun or meet other people themselves.



- Have a life while also being a carer.



We want to make sure that people get the right day opportunities for them in the place that suits them.



We can only do certain activities at the Markhouse Centre.



The building is in a bad state and will get worse.



Because of this the Council is seeing what is the best thing to do with the Centre.

# Choices we could make

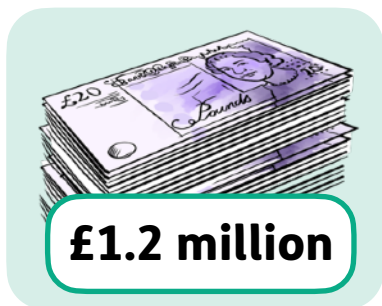


The Council has thought about the different things it could do with the Markhouse Centre.

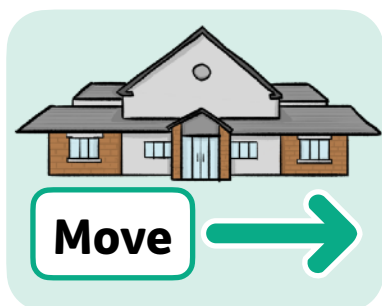
These are:



1. Make no changes - keep the day opportunities service at the Markhouse Centre.



2. Spend over £1.2 million on making the building better and keep the day opportunities service at the Centre.



3. Move the day opportunities at the Markhouse Centre to another building.



4. Look for another organisation to fix the building and run the day opportunities service at the Centre.

# What the Council thinks is the best choice

The Council thinks the best choice is to:



- Close the Markhouse Centre.



- Support people who use the Centre to find different day opportunities in a different place that will support their needs.

# The main reasons why we think this

The main reasons why we think this is the best choice are:



- We can only do certain activities at the Markhouse Centre.



- We want to offer more activities to people to meet their needs.



- It would cost over £1.2 million to improve the Centre and we do not think this is the best use of the Council's money.



- There are organisations that provide day opportunities around Waltham Forest that have lots of different activities to meet people's needs.

# If the Markhouse Centre closes



If the Council decides to close the Centre, everyone who uses it will have a **review** to see what care they need.



This **review** will make sure their needs are still being met with different services.



The reviews would happen before the Centre closes.



Each person would have a plan about which services they are moving to before the Centre closes.