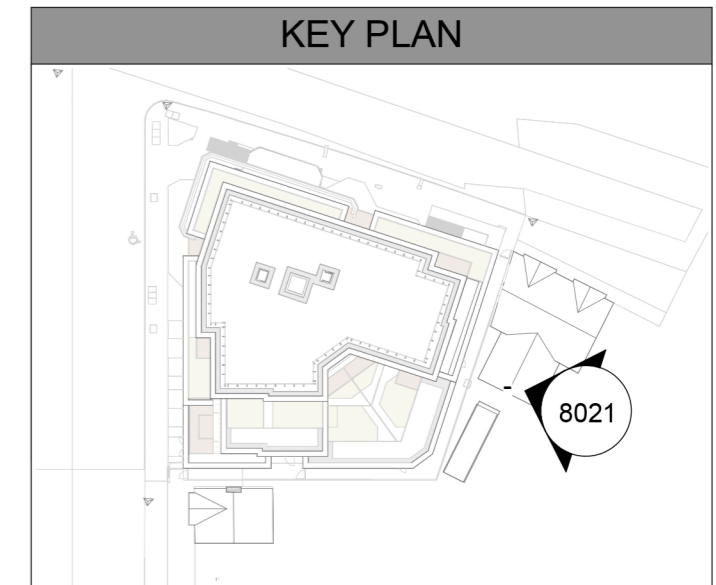



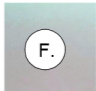


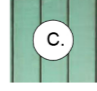
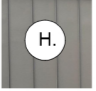





East Elevation
1 : 150



MATERIALS KEY

NOTE: Refer to Weedon Architects 'Schedule of External Materials' for further information

	A. Existing brick		F. Opaque glass
	B. Buff brick - Flemish Bond to match existing		G. Transparent glass
	C. Pre-finished pigmented cassette zinc cladding, colour: green		H. Pre-finished pigmented standing seam zinc cladding, colour: grey
	D. Teal / turquoise glazed brick to match the existing		I. Blind window features in brickwork
	E. PPC Metal Rail balcony		

P6	PL	17.05.24	Zinc reduced and replaced with brickwork. Addition of blind windows to add interest to facade
P5	PL	26.01.24	PLANNING ISSUE - FULL APP
Rev	Drawn	Date	Comment

EXISTING ELEVATION REPAIR NOTES

1. Poster panels to have neon lights reinstated	4. All faience to be cleaned and repaired by a specialist
2. Regal sign - faience to be cleaned and repaired by a specialist. Followed by reinstating neon signage over	5. All brickwork to be cleaned and re-pointed with mortar to match the existing
3. Flagpoles to be reinstated; the fittings strengthened where necessary and the poles replaced with aluminium or fibre glass	6. Canopy to be retained and refurbished with new external lighting based on historical photos

WEEDON
architects

Harry's Yard
176-178 Newhall St
Birmingham B3 1SJ
T: 0121 454 4171
F: 0121 455 9152
www.weedonarchitects.co.uk

Project
The Regal
Drawing Title
East Elevation
General Arrangement
Date 10/08/20 Drawn MD Checked DV
Scale As indicated@A3 Status PLANNING
Job 16138 Drawing Number 8021 Revision P6