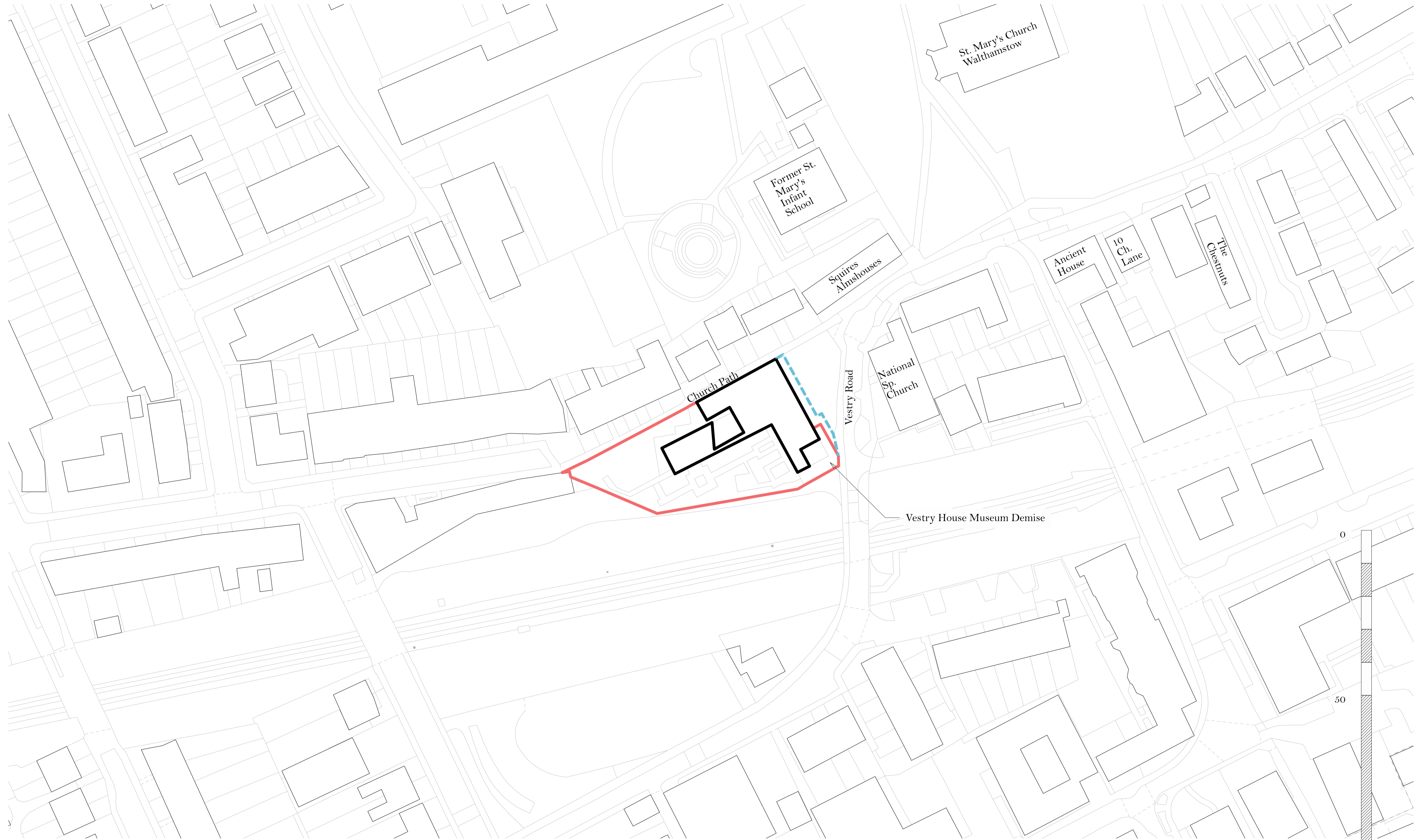


## 4.4 Plans

Page intentionally left blank



**Notes:**  
 All dimensions in millimetres unless otherwise indicated.  
 To scale for the purposes of Planning, do not scale from this drawing for the purposes of construction.  
 Drawing is issued for information purposes only.

**Revisions:**  
 0: Stage 3 Design Freeze  
 1: Planning Application Pack  
 2: Planning Application Feedback  
 Clarifications to Existing RL3

Key	Description	Qty.
<b>Annotations</b>		
	Existing context buildings	n/a
	Existing site elements	n/a
	Vestry House Museum	n/a
	Site boundary	n/a
	Highways controlled area	n/a

**Studio Weave Ltd**

020 7099 1922  
 hello@studioweave.com  
 www.studioweave.com  
 317 Mare Street  
 London  
 E8 3QE

**Vestry House Museum  
 Walthamstow**

**Existing Site Location Plan**

1:625 at A1  
 1:1250 at A3  
 drawn: 20/06/24 by: AMV  
 checked: 20/06/24 by: EB

no. 300\_D\_000\_00 Rev. 2

Page intentionally left blank



**Notes:**  
 All dimensions in millimetres unless otherwise indicated.  
 To scale for the purposes of Planning, do not scale from this drawing for the purposes of construction.  
 Drawing is issued for information purposes only.

**Revisions:**  
 0: Stage 3 Design Freeze  
 1: Planning Application Pack  
 2: Planning Application Feedback  
 Clarifications to Existing RLB

Key	Description	Qty.
<b>Annotations</b>		
	Existing walls	n/a
	Site boundary	n/a
	Area adopted by Highways	n/a
	Vestry House Museum	n/a
	Vestry House "Community Room"	n/a
	Formal garden	n/a
	Wild garden	n/a
	Access point	n/a

**Studio Weave Ltd**

020 7099 1922  
 hello@studioweave.com  
 www.studioweave.com  
 217 Mare Street  
 London  
 E8 3QE

Vestry House Museum  
 Walthamstow

**Existing Site Plan**

1:200 at A1  
 1:400 at A3  
 drawn: 20/06/24 by: AMV  
 checked: 20/06/24 by: EB

Page intentionally left blank



**Notes:**  
 All dimensions in millimetres unless otherwise indicated.  
 To scale for the purposes of Planning, do not scale from this drawing for the purposes of construction.  
 Drawing is issued for information purposes only.

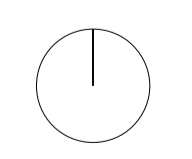
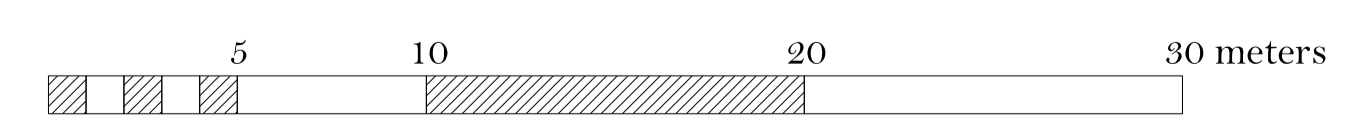
**Revisions:**  
 0: Stage 2 Sign-off  
 1: Stage 2 Design Freeze  
 2: Planning Application Pack  
 3: Adjustments to landscape and hedging  
 4: Adjustments to hedging  
 5: New trees and water point added  
 6: Planning Application Feedback  
 Clarifications to Existing RLB and External Works

- Key**
- Site boundary
  - Wall
  - Opening (Window / Door)
  - ▨ Resurfacing of existing paving
  - ▩ Self-binding gravel
  - Loose gravel
  - Grass
  - Museum Objects
  - Retained Tree
  - Proposed New Tree
  - 01 Exhibit Square (incl. Plinth)
  - 02 Increased Biodiversity & Culinary Use
  - 03 Cafe Seating Amongst Planting
  - 04 Existing lawn
  - 05 Woodland Edge All Native
  - 06 Suds Basin
  - 07 New planter grasses

**Studio Weave Ltd**  
 020 7099 1922  
 hello@studioweave.com  
 www.studioweave.com  
 217 Mare Street  
 London  
 E8 3QE

**Vestry House Museum**  
 Walthamstow

**Proposed Site Plan**  
 1:200 at A1  
 1:400 at A3  
 drawn: 20/06/24 by: AMV  
 checked: 20/06/24 by: EB  
 no. 300\_D\_101\_00 Rev. 6



Gate: proposed security line  
 Temporary waste storage  
 Allowance for (2x) cycle storage  
 Water point

Grading up to cafe door

Existing hedge retained

New hedging (~ 7m)

18 new trees (~300mm diameter)

Raise crown of existing beech

Museum object

'John's compost' bin retained

Flag pole  
 Proposed ramp for museum entrance  
 Fire engine bay  
 Yorkstone paving throughout.  
 Water drains along property boundaries

Disabled parking space

Art commission integrated with paving

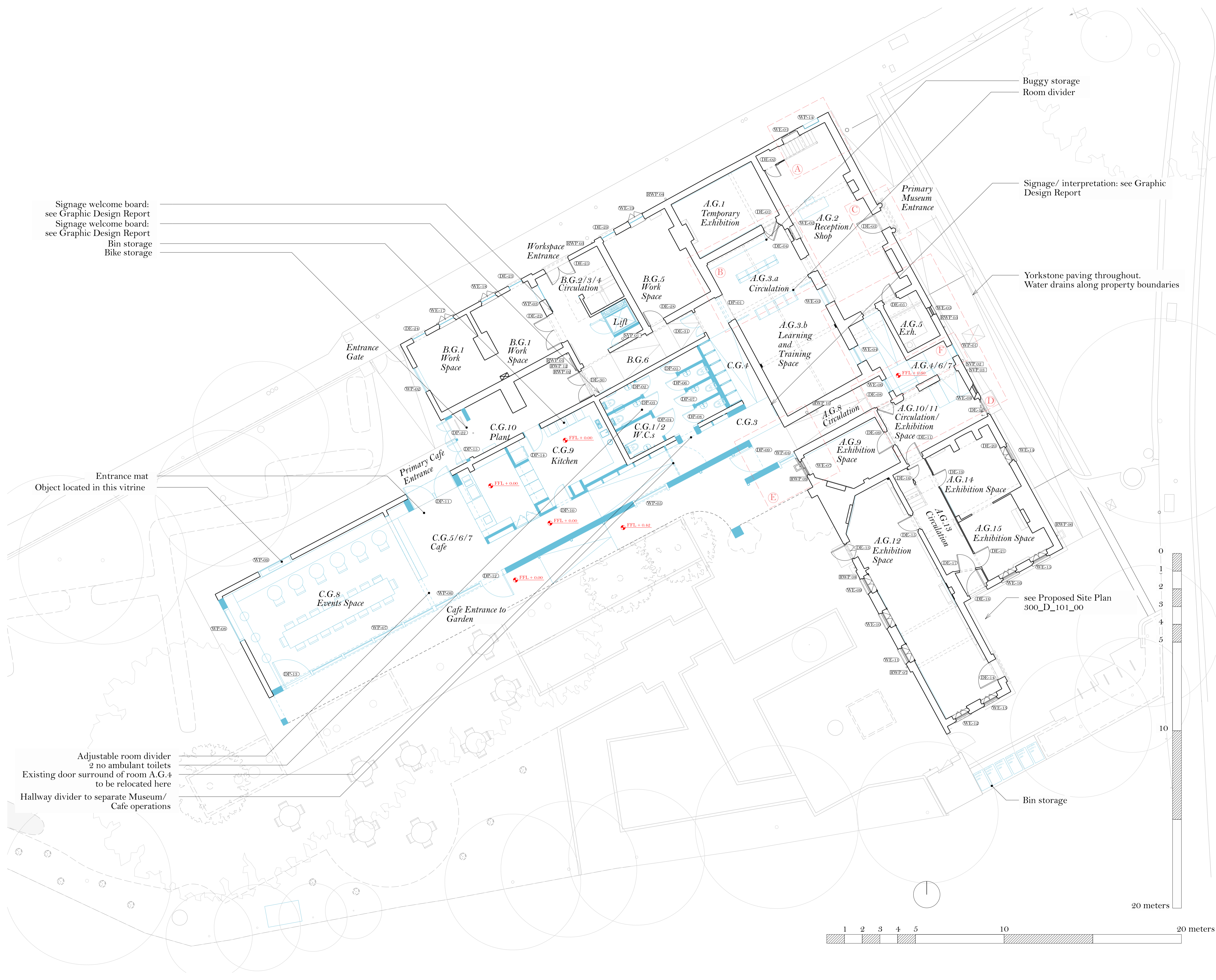
Cycle stands: 5 (storage of 10 cycles)  
 (of which, 3 existing and 2 proposed)

Proposed bin store  
 (accommodates 4 eurobins)  
 Gate: proposed security line

Water point  
 Localised repair to shed

Page intentionally left blank





Signage welcome board:  
see Graphic Design Report  
Signage welcome board:  
see Graphic Design Report  
Bin storage  
Bike storage

Entrance mat  
Object located in this vitrine

Adjustable room divider  
2 no ambulant toilets  
Existing door surround of room A.G.4  
to be relocated here  
Hallway divider to separate Museum/  
Cafe operations

Buggy storage  
Room divider

Signage/ interpretation: see Graphic  
Design Report

Yorkstone paving throughout.  
Water drains along property boundaries

see Proposed Site Plan  
300\_D\_101\_00

Bin storage

**Notes:**  
All dimensions in millimetres unless otherwise indicated.  
To scale for the purposes of Planning, do not scale from this drawing for the purposes of construction.  
Drawing is issued for information purposes only.

**Revisions:**  
0: Stage 2 Sign-off  
1: Stage 2 Design Freeze  
2: Planning Application Pack  
3: Planning Application Pack Revision  
4: Adjustments to landscape and hedging; New trees and water point added  
5: Planning Application Feedback  
Clarifications to Existing RLB and External Works

Key	Description	Qty.
[Symbol]	Existing walls	n/a
[Symbol]	Site elements	n/a
[Symbol]	Proposed walls	n/a
[Symbol]	Proposed site elements	n/a
[Symbol]	Details	n/a

**Annotations**

A: see Proposed detail - External Vitrine 300\_D\_120\_06  
B: see Proposed detail - Walkway Layout B.1.9 300\_D\_120\_04\_a + b  
C: see Proposed detail - Main Entrance Door D-03 300\_D\_120\_00  
D: see Proposed detail - Internal ramping A.G. 4/5/6 300\_D\_120\_03  
E: see Proposed detail - Canopy meets Buttress C.G.11 300\_D\_120\_02  
F: see Proposed detail - Reopened Window WP-01 300\_D\_120\_01\_a + b

**Studio Weave Ltd**  
020 7099 1922  
hello@studioweave.com  
www.studioweave.com  
317 Mare Street  
London  
E8 3QE

**Vestry House Museum  
Walthamstow**

**Proposed Ground Floor Plan**  
1:100 at A1  
1:200 at A3  
drawn: 14/06/24 by: AMV  
checked: 14/06/24 by: EB  
no. 300\_D\_111\_00 Rev. 5

Page intentionally left blank



**Notes:**  
 All dimensions in millimetres unless otherwise indicated.  
 To scale for the purposes of Planning, do not scale from this drawing for the purposes of construction.  
 Drawing is issued for information purposes only.

**Revisions:**  
 0 - Stage 2 Sign-off  
 1 - Stage 3 Design Freeze  
 2 - Planning Application Pack  
 3 - Planning Application Feedback  
 Clarifications to Existing RLB and External Works

Key	Description	Qty.
<b>Annotations</b>		
	Existing walls	n/a
	Site elements	n/a
	Proposed walls	n/a
	Proposed site elements	n/a
	Details	n/a

B: see Proposed detail - Walkway Layout B.1.9  
 300\_D\_120\_04\_a + b

**Studio Weave Ltd**

020 7099 1922  
 hello@studioweave.com  
 www.studioweave.com  
 217 Mare Street  
 London  
 E8 3QE

**Vestry House Museum  
 Walthamstow**

**Proposed First Floor Plan**

1:100 at A1  
 1:200 at A3  
 drawn: 14/06/24 by: AMV  
 checked: 14/06/24 by: EB

Page intentionally left blank



Page intentionally left blank

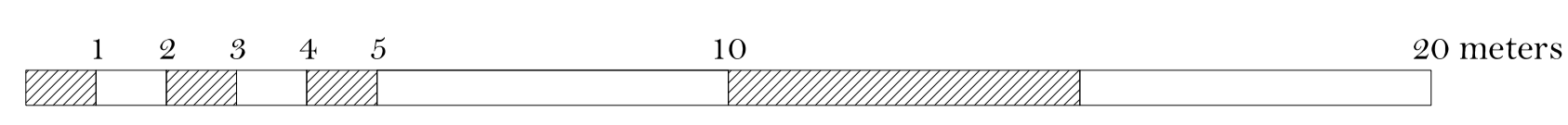


**Notes:**  
 All dimensions in millimetres unless otherwise indicated.  
 To scale for the purposes of Planning, do not scale from this drawing for the purposes of construction.  
 Drawing is issued for information purposes only.

**Revisions:**  
 0 Planning Application Pack  
 1 Planning Application Feedback  
 Clarifications to Existing RLB and External Works

Key	Description	Qty.
<b>Annotations</b>		
	Walls	n/a
	Site elements	n/a
	Section lines	n/a
	Elevation lines	n/a
	Details	n/a

A: see Proposed detail - External Vitrine  
 300\_D\_120\_06  
 B: see Proposed detail - Walkway Layout B.1.9  
 300\_D\_120\_04\_a + b  
 C: see Proposed detail - Main Entrance Door D-03  
 300\_D\_120\_00  
 D: see Proposed detail - Internal ramping A.G 4/5/6  
 300\_D\_120\_03  
 E: see Proposed detail - Canopy meets Buttress C.G11  
 300\_D\_120\_02  
 F: see Proposed detail - Reopened Window WP-01  
 300\_D\_120\_01\_a + b



**Studio Weave Ltd**  
 020 7099 1922  
 hello@studioweave.com  
 www.studioweave.com  
 217 Mare Street  
 London  
 E8 3QE

**Vestry House Museum**  
 Walthamstow

Coordination Ground Floor Plan Proposed

1:100 at A1  
 1:200 at A3  
 drawn: 14/06/24 by: AMV  
 checked: 14/06/24 by: EB

no. 300\_D\_111\_03 Rev. 1

Page intentionally left blank

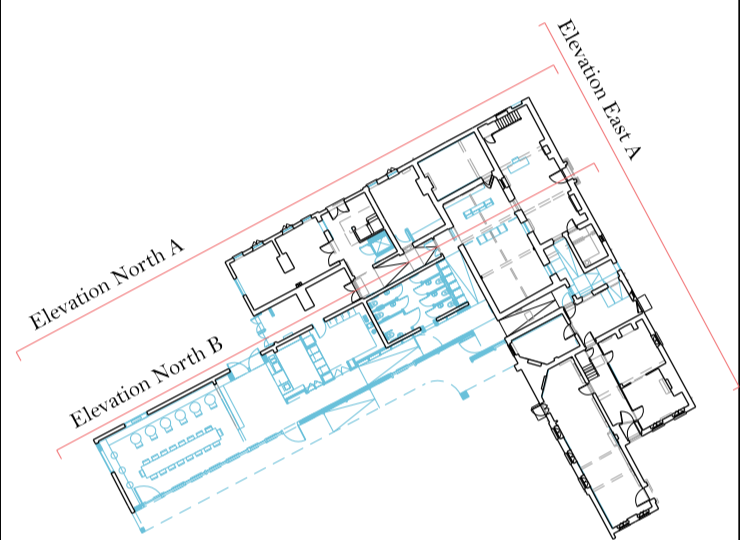


**Notes:**  
 All dimensions in millimetres unless otherwise indicated.  
 This drawing is for information purposes only. It is not to be used for planning, do not scale from this drawing for the purposes of construction.  
 Drawing is issued for information purposes only.  
 Drawing is issued for information purposes only.

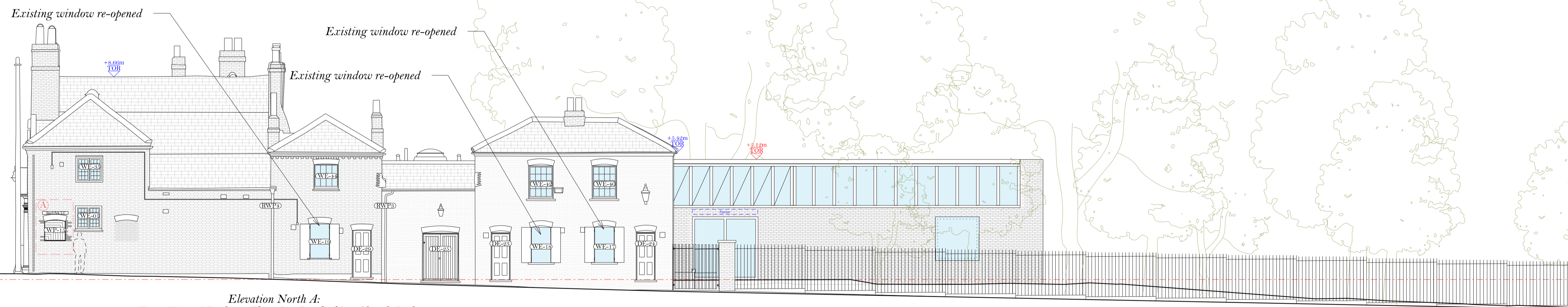
**Revisions:**  
 0: Stage 3 Design Freeze  
 1: Planning Application Pack  
 2: Stage 4 Design Freeze  
 3: Planning Application Feedback  
 Clarifications to Existing E.R. and External Works

Key	Description	Qty.
SLD	Survey Datum Level	n/a
---	Survey Datum Levels	n/a
PLD	Proposed Level	n/a
---	Proposed FFL	n/a

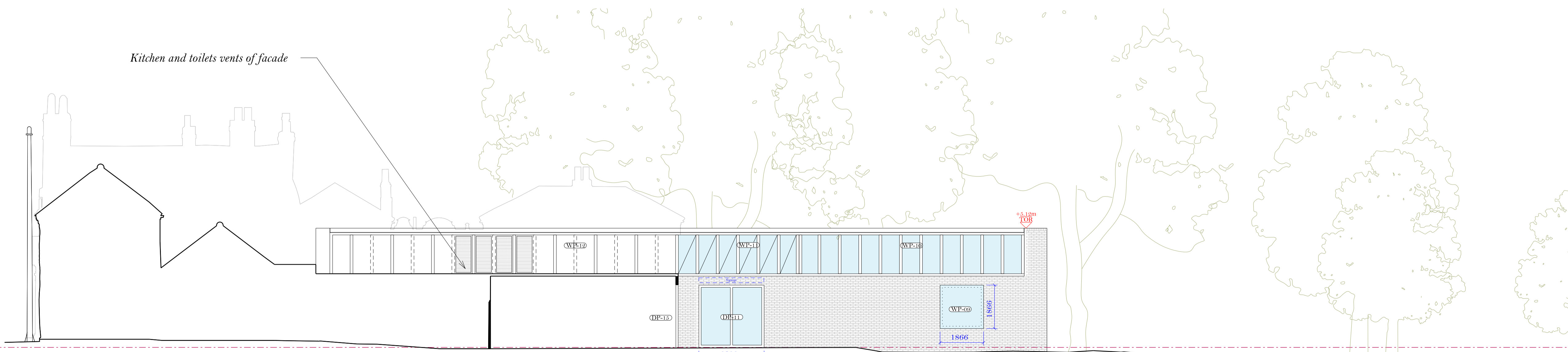
A: see Proposed detail - External Vitrine  
 300\_D\_120\_06  
 C: see Proposed detail - Main Entrance Door D-03  
 300\_D\_120\_09  
 F: see Proposed detail - Reopened Window WP-01  
 300\_D\_120\_01\_a + b



*Elevation East A:  
 Vestry House Eastern Elevation Overlooking Vestry Road*



*Elevation North A:  
 Vestry House Northern Elevation Overlooking Church Path*



*Elevation North B:  
 Proposed Cafe Northern Extension*



**Studio Weave Ltd**

020 7099 1922  
 hello@studioweave.com  
 www.studioweave.com  
 317 Mare Street  
 London  
 E8 3QE

**Vestry House Museum  
 Walthamstow**

**Proposed External Elevations  
 (Sheet 3 of 3)**  
 1:100 at A1  
 1:200 at A3  
 drawn: 20/06/24 by: AMV  
 checked: 20/06/24 by: EB

no. 300\_D\_113\_03 Rev. 3

Page intentionally left blank