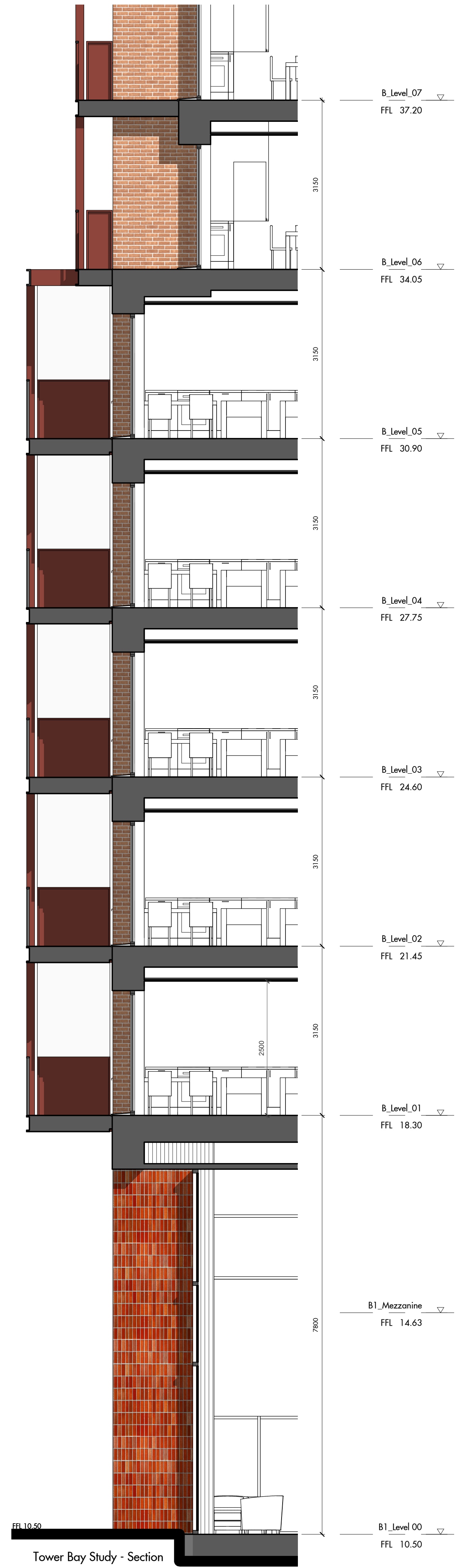
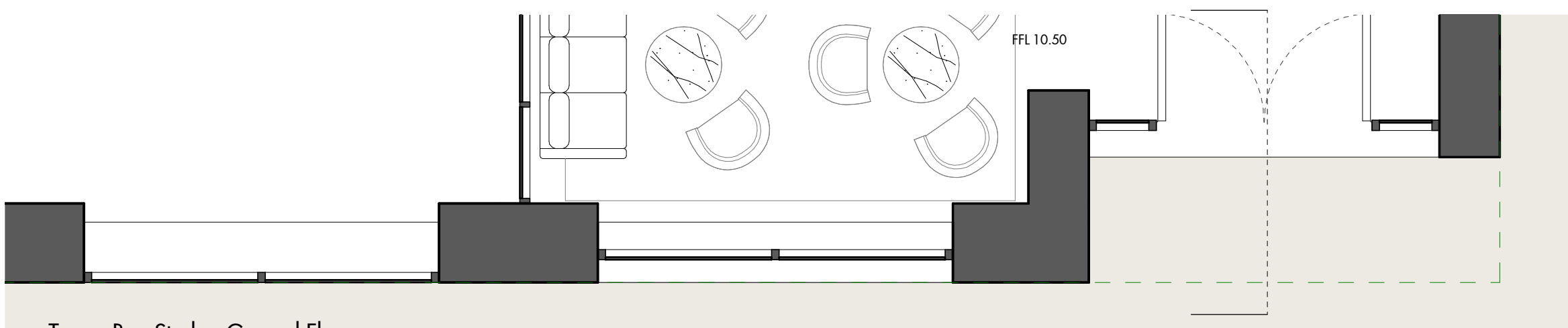




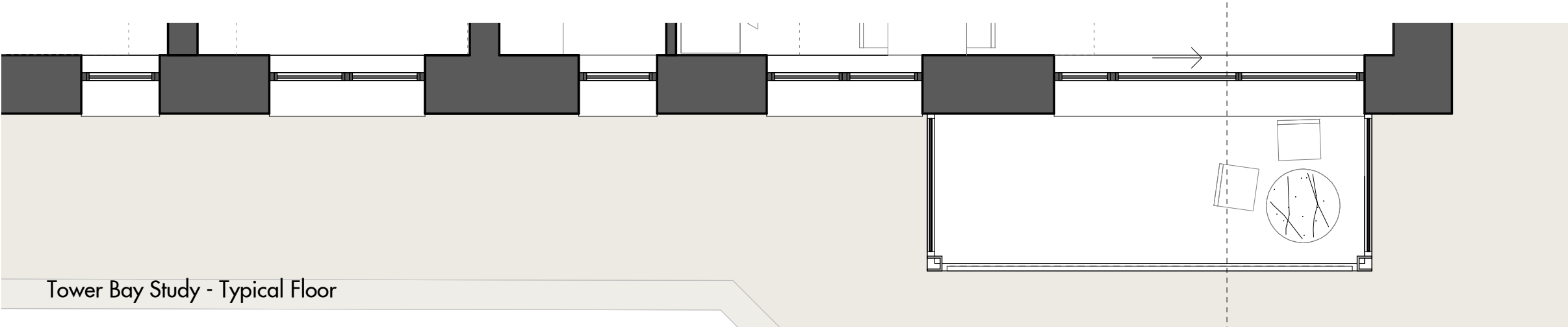
Tower Bay Study - Elevation



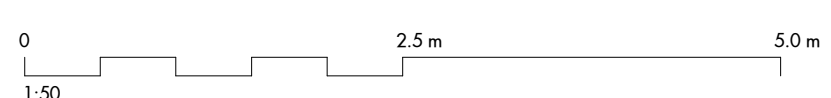
Tower Bay Study - Section



Tower Bay Study - Ground Floor



Tower Bay Study - Typical Floor



Bay Study Key

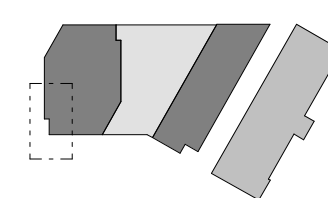
1. Glazed brick
2. Soldier course stock brick infill panel
3. Metal panel (RAL 3009 or similar)
4. Textured/profiled metal panel (RAL 3009 or similar)
5. Metal mullion (RAL 3009 or similar)
6. Glazing
7. Red stock brick blend
8. Red stock brick
9. White concrete finish
10. Buff stock brick
11. Metal window
12. Textured brick panel
13. Metal balcony (RAL 3009 or similar)
14. Metal Screen (RAL 3009 or similar)
15. Louvre system
16. Metal balustrade

Figured dimensions are in millimetres unless noted otherwise. All dimensions and levels shall be verified on site before proceeding with works. Detailed site survey to be carried out to verify positions and level relationships with the features and evidence survey. The Architect must be notified of any discrepancy. Boundaries are indicative only and are to be verified by others.

Allies & Morrison LLP is not responsible for any errors caused by the transmission, translation, software or computer systems. Allies & Morrison LLP is not responsible for nor shall be liable for the consequences of any use made of the drawings or models other than that for which they were produced by Allies & Morrison LLP for the Client.

All Intellectual Property Rights reserved.

REV	DATE	DESCRIPTION	CD
P1	13/07/22	PLANNING APPLICATION ISSUE	AS
P2	16/06/23	PLANNING APPLICATION ISSUE	DA



Allies and Morrison LLP

85 Southwark Street  
London SE1 0HX  
telephone 020 7921 0100  
facsimile 020 7921 0101  
email studio@alliesandmorrison.com

A&M JOB No: 19029

Uplands Business Park

Bay Study 02 - B1  
DETAILED APPLICATION BLOCK B  
19029-AAM-B\_07\_401

SCALE 1: 50 @A1 1: 100 @A3

FOR APPROVAL

P2

Revision