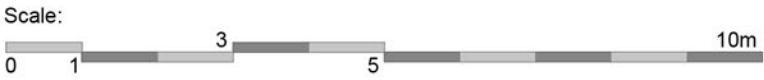


This drawing and the design are the copyright of **ON Architecture Ltd only**. This drawing should not be copied or reproduced without written consent.

All dimensions are to be checked on site prior to setting out and fabrication and **ON Architecture Ltd** should be notified of any discrepancy prior to proceeding further.

For Construction & Fabrication Purposes - Do not scale from this drawing, use only the illustrated dimensions herein. Additional dimensions are to be requested and checked directly.

Illustrated information from 3rd party consultants/specialists is shown as indicatively only. See other consultant / specialist drawings for full information and detail.

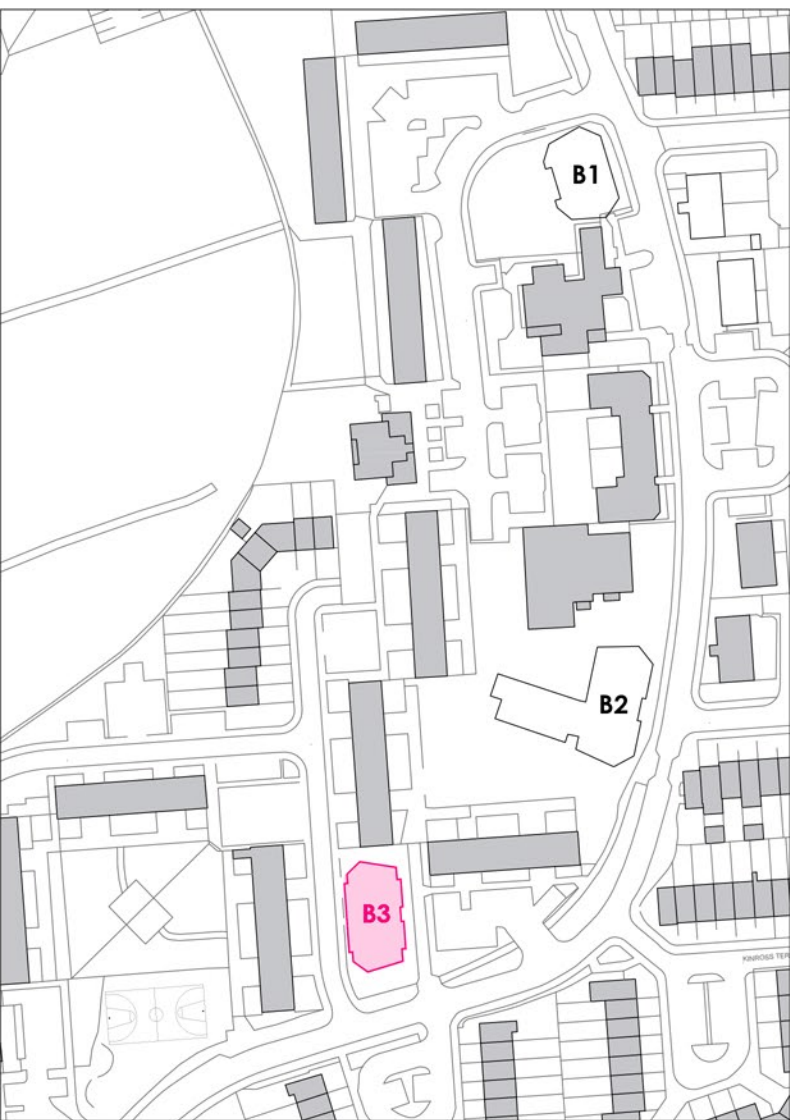


- Key:**
- 1 Yellow Brick - Type 01
 - 2 Yellow Brick - Type 02
 - 3 Yellow Brick - Type 03
 - 4 Yellow Brick - Type 04
 - 5 Grey Brick
 - 6 Dark Grey Brick
 - 7 Glazed Brick
 - 8 PPC Aluminium Balconies
 - 9 PPC Aluminium Windows & Doors
 - 10 Projecting Brick Detail
 - 11 Reconstituted Stone Banding

Notes:

Landscape shown indicatively. Refer to landscape architect drawings and specification for external proposals.

Key Plan: Not to scale



Revision Note & Date		Note	Amended	Checked
Rev	Date			
001	18.11.22	ISSUED FOR PLANNING	CS	JT
002	04.02.23	UPDATED TO REFLECT TECHNICAL REVIEW COMMENTS	CS	JT
003	21.03.23	UPDATED TO CLIENT COMMENTS	CS	JT

ON
ARCH
ITECT
URE

Canterbury Studio
Logan House, St Andrews Close
Canterbury,
CT1 2RP

info@onarchitecture.co.uk
onarchitecture.co.uk
01227 634334

Project Title
PRIORY COURT, WALTHAMSTOW

Client's Details
SIXTY BRICKS

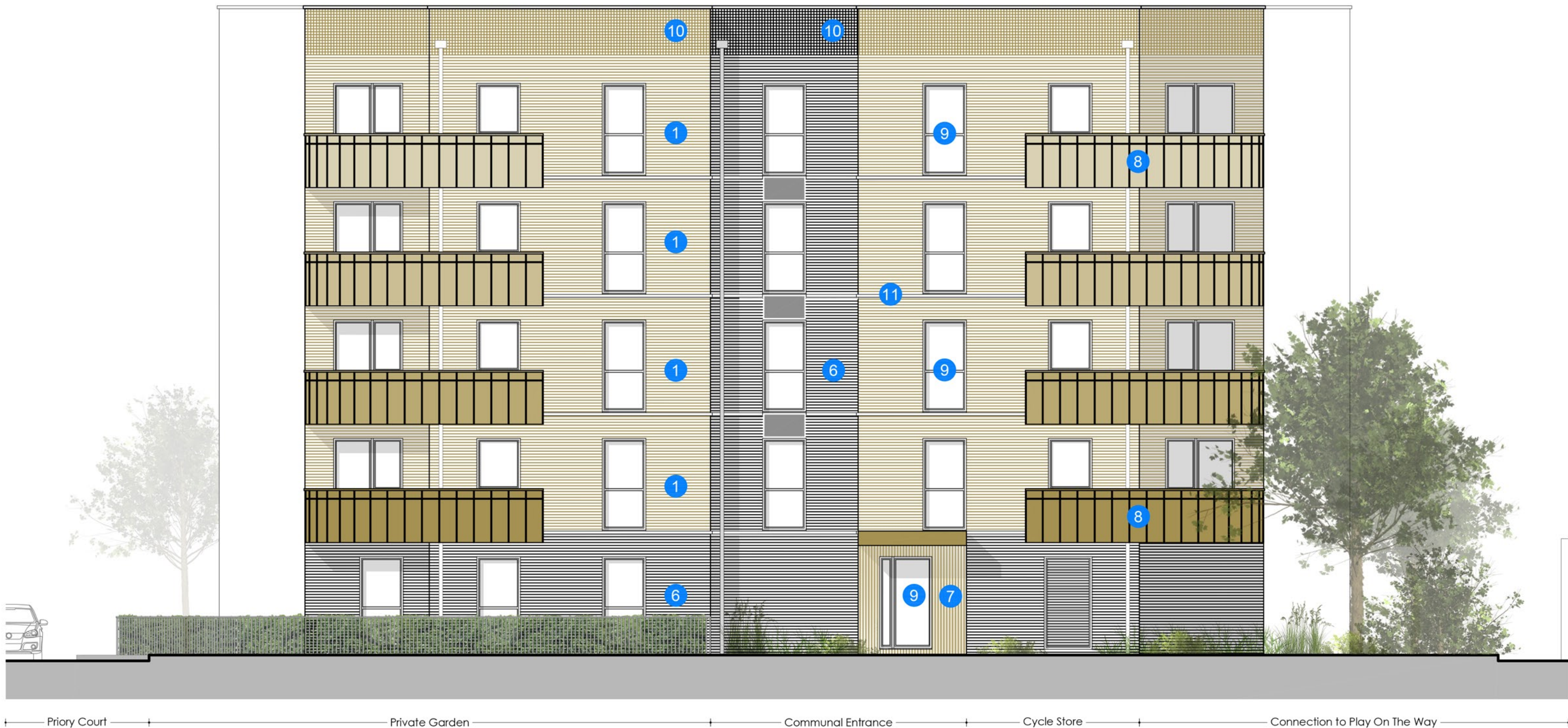
Drawing Title
**B3 - PROPOSED EAST & NORTH
FACING ELEVATIONS**

BIM Number
20.112-ONA-B3-EL-DR-A - 0301

Scale Date Drawn Checked
1:100 @ A1 NOV 21 JB JT

Drawing Status
PLANNING

Project No.	Drawing No.	Status	Revision
20.112	0301	A3	003



Rear Elevation
(East Facing - Fronting Priory Court Road)



Side Elevation
(North Facing - Fronting Existing Vermont House)