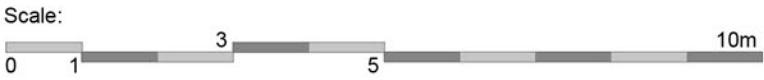


This drawing and the design are the copyright of **ON Architecture Ltd only**. This drawing should not be copied or reproduced without written consent.

All dimensions are to be checked on site prior to setting out and fabrication and **ON Architecture Ltd** should be notified of any discrepancy prior to proceeding further.

For Construction & Fabrication Purposes - Do not scale from this drawing, use only the illustrated dimensions herein. Additional dimensions are to be requested and checked directly.

Illustrated information from 3rd party consultants/specialists is shown as indicatively only. See other consultant / specialist drawings for full information and detail.

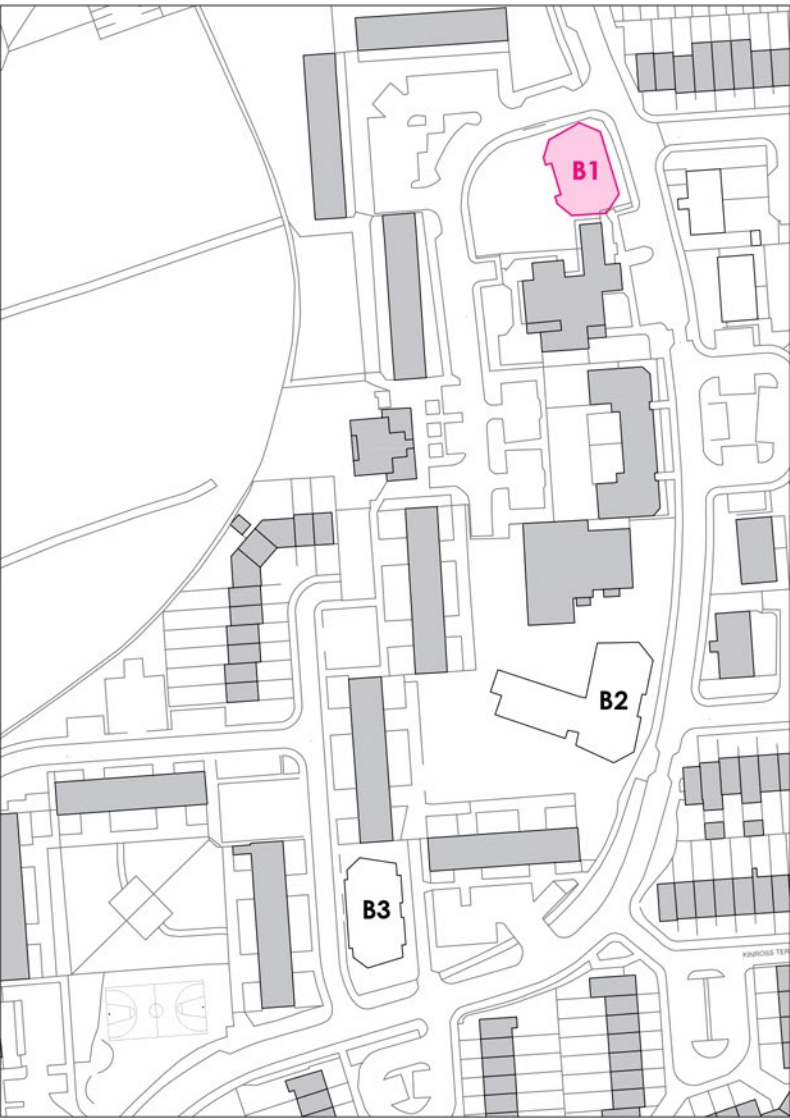


- Key:**
- 1 Yellow Brick - Type 01
  - 2 Yellow Brick - Type 02
  - 3 Yellow Brick - Type 03
  - 4 Yellow Brick - Type 04
  - 5 Grey Brick
  - 6 Dark Grey Brick
  - 7 Glazed Brick
  - 8 PPC Aluminium Balconies
  - 9 PPC Aluminium Windows & Doors
  - 10 Projecting Brick Detail
  - 11 Reconstituted Stone Banding

**Notes:**

Landscape shown indicatively. Refer to landscape architect drawings and specification for external proposals.

**Key Plan:** Not to scale



Revision Note & Date		Note	Amended	Checked
Rev	Date			
001	18.11.22	ISSUED FOR PLANNING	CS	JT
002	04.02.23	UPDATED TO REFLECT TECHNICAL REVIEW COMMENTS	CS	JT
003	21.03.23	UPDATED TO CLIENT COMMENTS	CS	JT

**ON**  
ARCH  
ITECT  
URE

Canterbury Studio  
Logan House, St Andrews Close  
Canterbury,  
CT1 2RP

info@onarchitecture.co.uk  
onarchitecture.co.uk  
01227 634334

Project Title  
**PRIORY COURT, WALTHAMSTOW**

Client's Details  
**SIXTY BRICKS**

Drawing Title  
**B1 PROPOSED EAST & NORTH FACING ELEVATIONS**

BM Number  
**20.112-ONA-B1-EL-DR-A - 0300**

Scale Date Drawn Checked  
1:100 @ A1 NOV 21 JB JT

Drawing Status  
**PLANNING**

Project No.	Drawing No.	Status	Revision
20.112	0300	A3	003



**Front Elevation**  
(East Facing - Fronting Priory Court Road)



**Side Elevation**  
(North Facing - Fronting Sherwood Close)