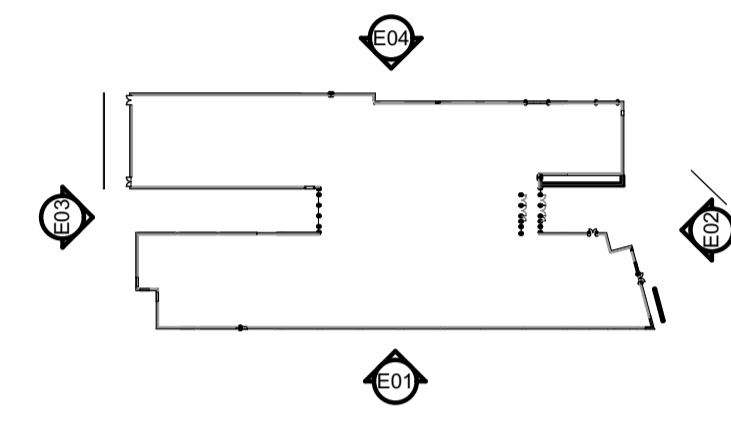


Notes
 Check all dimensions on site. Do not scale from this drawing
 Report any discrepancies and omissions to HLM Architects
 This Drawing is Copyright ©

Key

- Existing unaltered accommodation
- Remodelled/repurposed accommodation
- Demolished

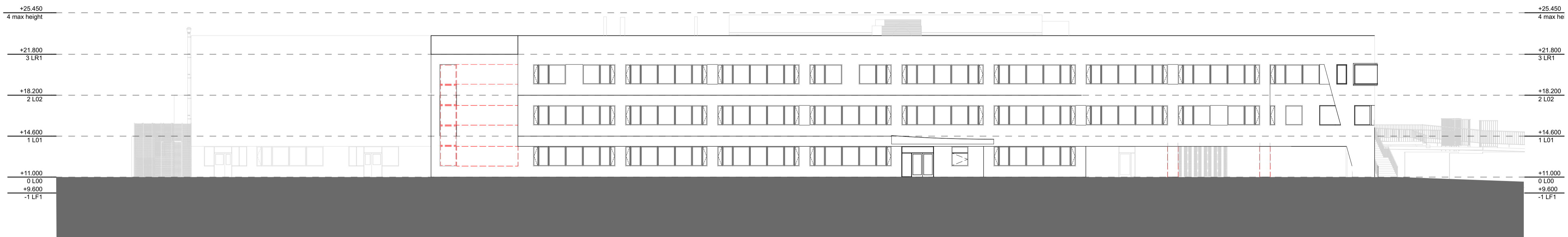
Remodelled accommodation - Refer to remodelled drawings



00000

E03 Demolition West Elevation

1:200



00000

E01 Demolition South Elevation

1:200

P02	UPDATED PLANNING	16/02/22	CB	CW
P01	ISSUE FOR PLANNING	20/08/21	GS	CB
Rev	Change Name	Date	By	Chk
Revisions		Suitability		
Project		S2 INFORMATION		

WILLOWFIELD SCHOOL

Client



Title

DEMOLITION ELEVATIONS SOUTH & WEST

Drawing No.	Revision
WIL-HLM-ZZ-ZZ-DR-A-00371	P02

Scale @ A1	Drawn
1:200	CB
Date	Checked
29/04/2021	CW

HLM Architects

© HLM Architects
 Wool + Tailor Building
 Fifth Floor
 10-12, Alie Street
 London E1 8DE

www.hlmarchitects.com
 T. +44 (0) 20 7921 4800
 F. +44 (0) 20 7921 4850
 london@hlmarchitects.com

