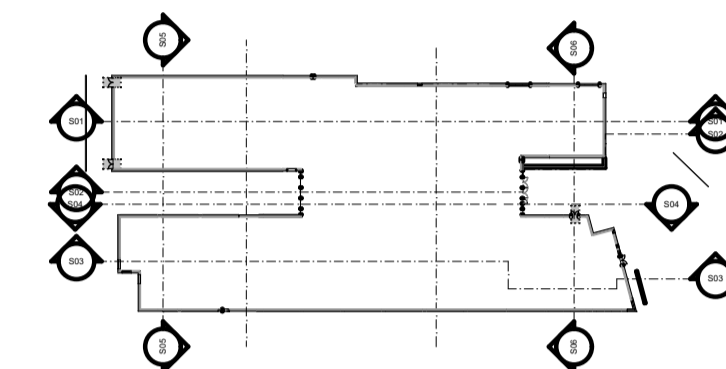


Notes

Key

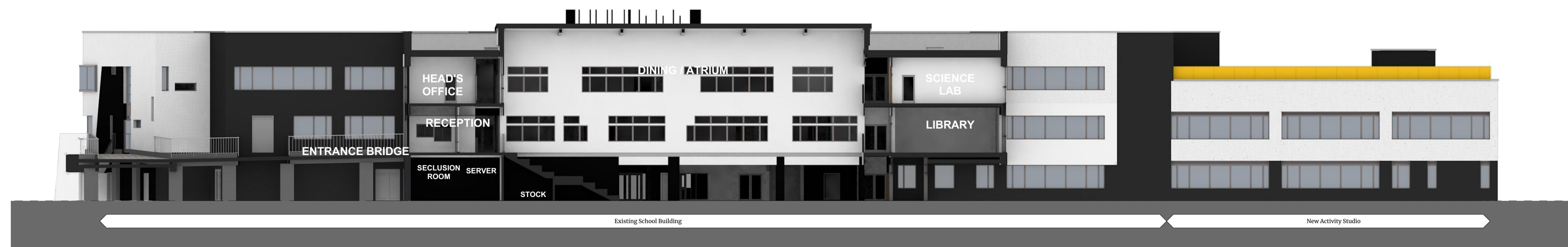
- 1 White render
- 2 Coloured render
- 3 Render on metal framing
- 4 Brick
- 5 Textured brick
- 6 Curtain walling
- 7 Coloured glazing

External design - Refer to Design & Access Statement



Key

- Existing unaltered accommodation
- Remodelled/repurposed accommodation
- Demolished



S04

PROPOSED SECTION 4

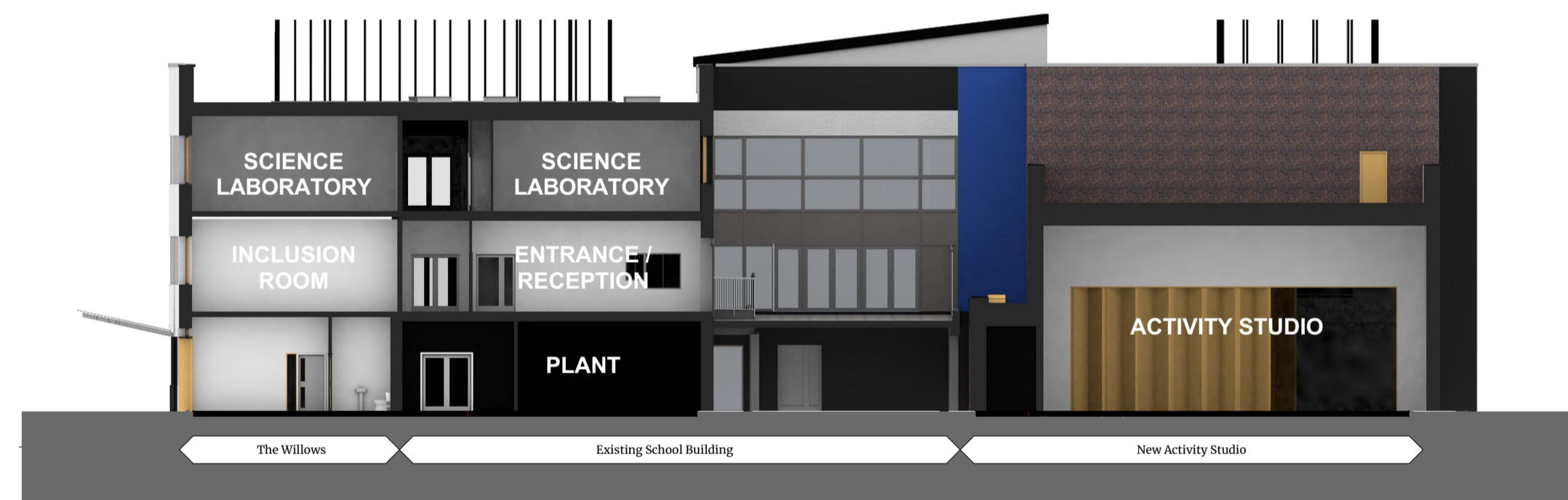
1:200



S05

PROPOSED SECTION 5

1:200



S06

PROPOSED SECTION 6

1:200

P01	ISSUE FOR PLANNING	200821	GS	CB
Rev	Change Name	Date	By	Chk
Revisions				Suitability
Project				S2 INFORMATION

### WILLOWFIELD SCHOOL

Client



Title

### PROPOSED SECTIONS 2 RENDERS

Drawing No.	Revision
WIL-HLM-ZZ-ZZ-DR-A-00224	P01

Scale @ A1	Drawn
1:200	CB
Date	Checked
16/04/2021	CW



© HLM Architects  
Wool + Tailor Building  
Fifth Floor  
10-12, Alie Street  
London E1 8DE

www.hlmarchitects.com  
T. +44 (0) 20 7921 4800  
F. +44 (0) 20 7921 4850  
london@hlmarchitects.com

