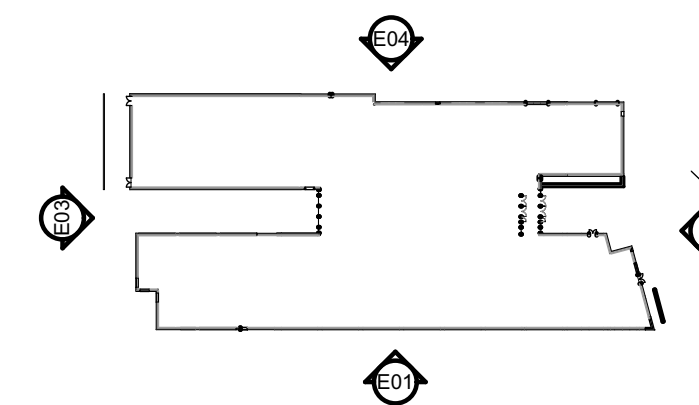


Notes

- ① White render
- ② Coloured render
- ③ Render on metal framing
- ④ Brick
- ⑤ Textured brick
- ⑥ Curtain walling
- ⑦ Coloured glazing
- ⑧ Solid parapet screen

External design - Refer to Design & Access Statement



0000 PROPOSED EAST ELEVATION



0000 PROPOSED SOUTH ELEVATION - GRAPHICAL

| | | | | |
|-----------|--------------------|--------|----|-----------------|
| P01 | ISSUE FOR PLANNING | 200821 | GS | CB |
| Rev | Change Name | Date | By | Chk |
| Revisions | | | | Suitability |
| Project | | | | S1 COORDINATION |

WILLOWFIELD SCHOOL

Client



Title

GRAPHICAL ELEVATIONS SOUTH & EAST

| | |
|--------------------------|----------|
| Drawing No. | Revision |
| WIL-HLM-ZZ-ZZ-DR-A-00323 | P01 |

| | |
|------------|---------|
| Scale @ A1 | Drawn |
| 1:200 | CB |
| Date | Checked |
| 16/04/2021 | CW |



© HLM Architects
 Wool + Tailor Building
 Fifth Floor
 10-12, Alie Street
 London E1 8DE

www.hlmarchitects.com
 T. +44 (0) 20 7921 4800
 F. +44 (0) 20 7921 4850
 london@hlmarchitects.com

