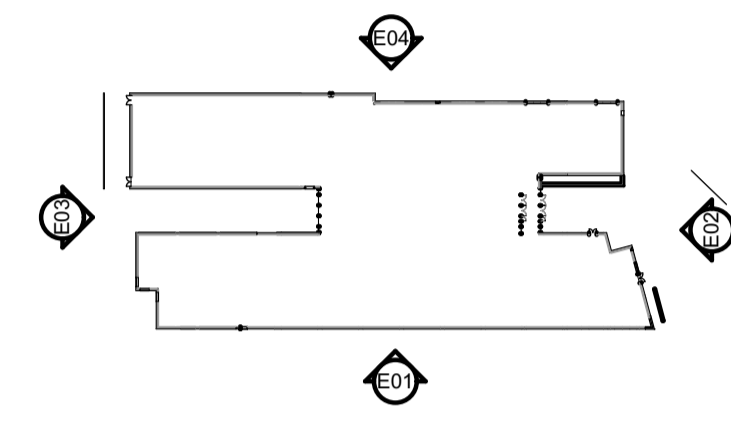


E03

EXISTING WEST ELEVATION

1:200



E01

EXISTING SOUTH ELEVATION

1:200

Revisions	Suitability
P03 ISSUE FOR PLANNING	200821 GS CB
P02 STAGE 2 ISSUE	190721 GS CB
P01 FIRST ISSUE	200421 CB CW
Rev	Change Name Date By Chk

Project S2 INFORMATION

WILLOWFIELD SCHOOL

Client



Title

EXISTING ELEVATIONS SOUTH & WEST

Drawing No. Revision

WIL-HLM-ZZ-ZZ-DR-A-00311 P03

Scale @ A1 Drawn

1:200 CB

Date Checked

16/04/2021 CW



© HLM Architects
 Wool + Tailor Building
 Fifth Floor
 10-12, Alie Street
 London E1 8DE

www.hlmarchitects.com
 T. +44 (0) 20 7921 4800
 F. +44 (0) 20 7921 4850
 london@hlmarchitects.com

