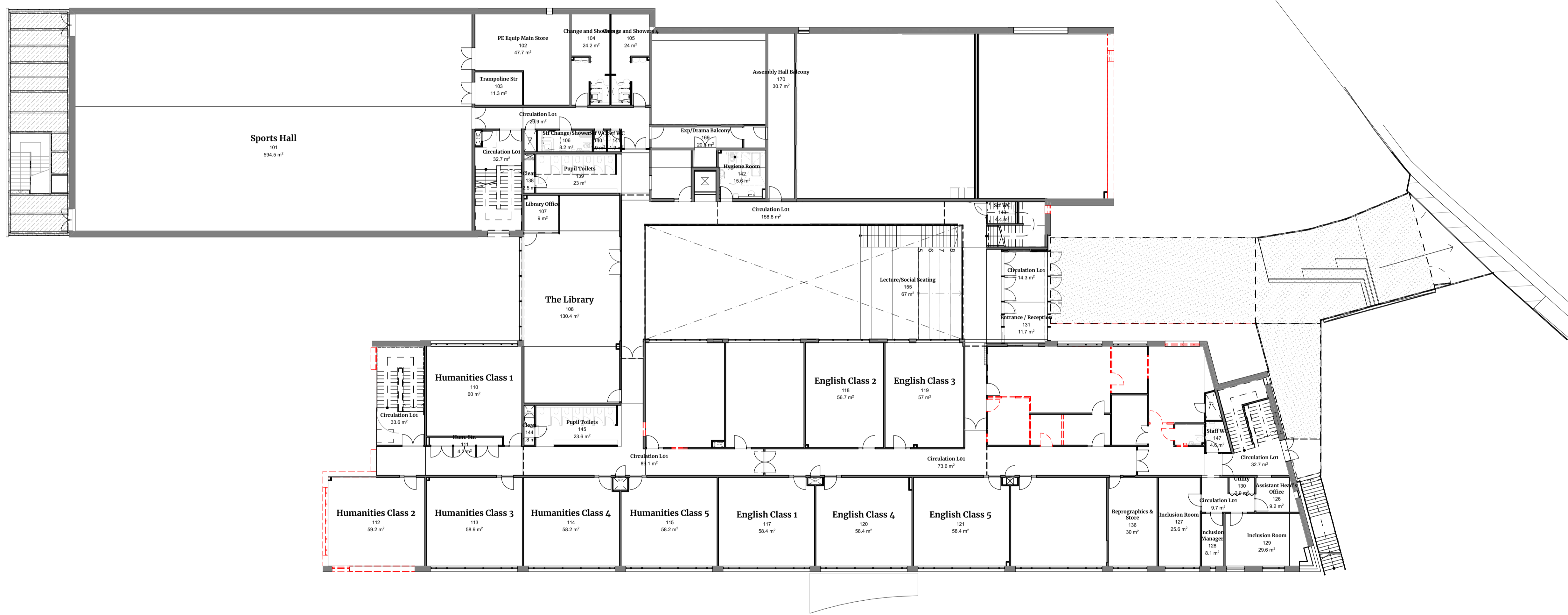


Notes

Key

- Existing unaltered accommodation
- Remodelled/repurposed accommodation
- Demolished

Remodelled accommodation - Refer to remodelled drawings



P01	ISSUE FOR PLANNING	2008/21	GS	CB
Rev	Change Name	Date	By	Chk
	Revisions			Suitability
	Project	S2 INFORMATION		

### WILLOWFIELD SCHOOL

Client



Title

### DEMOLITION FIRST FLOOR PLAN GA

Drawing No.	Revision
<b>WIL-HLM-ZZ-01-DR-A-00172</b>	<b>P01</b>

Scale @ A1	Drawn
1:200	CB
Date	Checked
29/04/2021	CW



© HLM Architects  
 Wool + Tailor Building  
 Fifth Floor  
 10-12, Alie Street  
 London E1 8DE

www.hlmarchitects.com  
 T. +44 (0) 20 7921 4800  
 F. +44 (0) 20 7921 4850  
 london@hlmarchitects.com

