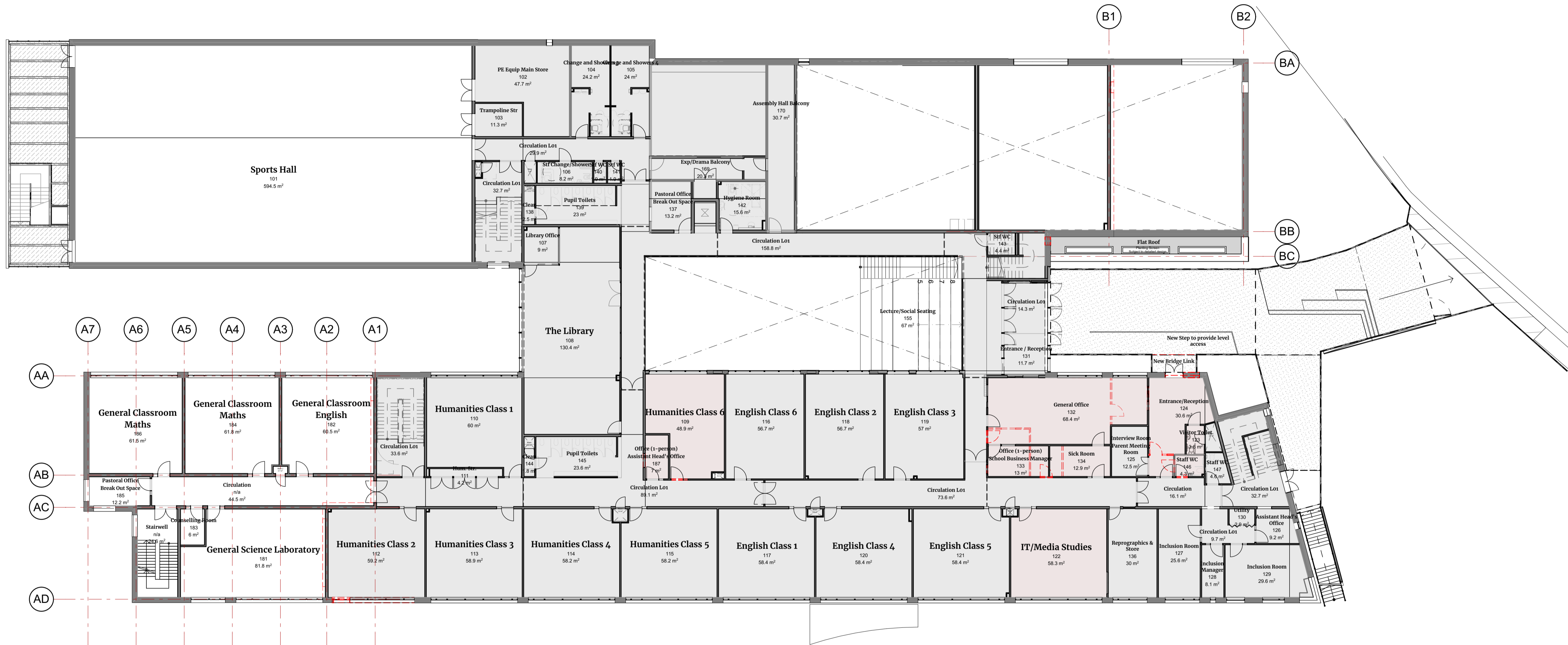
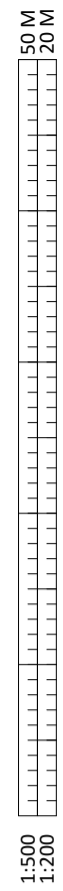


Notes

Key

- Existing unaltered accommodation
- Remodelled/repurposed accommodation
- Demolished

Remodelled accommodation - Refer to remodelled drawings



P06	ISSUE FOR PLANNING	20/08/21	GS	CB
P05	STAGE 2 ISSUE	19/07/21	GS	CB
P04	SIGN OFF ISSUE	09/06/21	CB	CW
P03	ALTERATIONS TO LAYOUT	14/05/21	CB	CW
P02	ALTERATIONS TO LAYOUT	20/04/21	CB	CW
P01	FIRST ISSUE	13/04/21	CB	CW
Rev	Change Name	Date	By	Chk
Revisions				Suitability
Project				S2 INFORMATION

WILLOWFIELD SCHOOL

Client



Title

PROPOSED FIRST FLOOR PLAN GA

Drawing No.	Revision
WIL-HLM-ZZ-01-DR-A-00122	P06

Scale @ A1	Drawn
1:200	CB
Date	Checked
13/04/2021	CW



© HLM Architects
 Wool + Tailor Building
 Fifth Floor
 10-12, Alie Street
 London E1 8DE

www.hlmarchitects.com
 T. +44 (0) 20 7921 4800
 F. +44 (0) 20 7921 4850
 london@hlmarchitects.com



N

