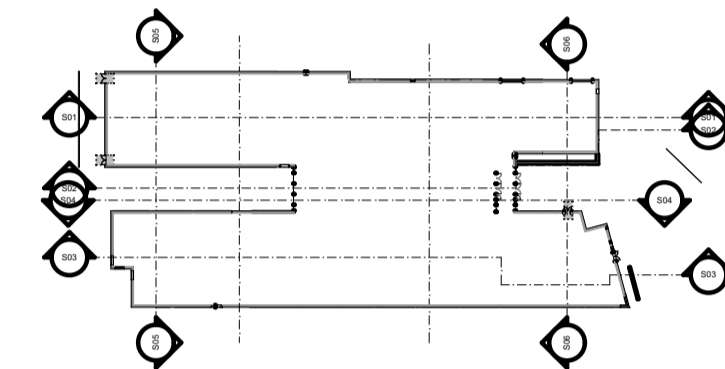


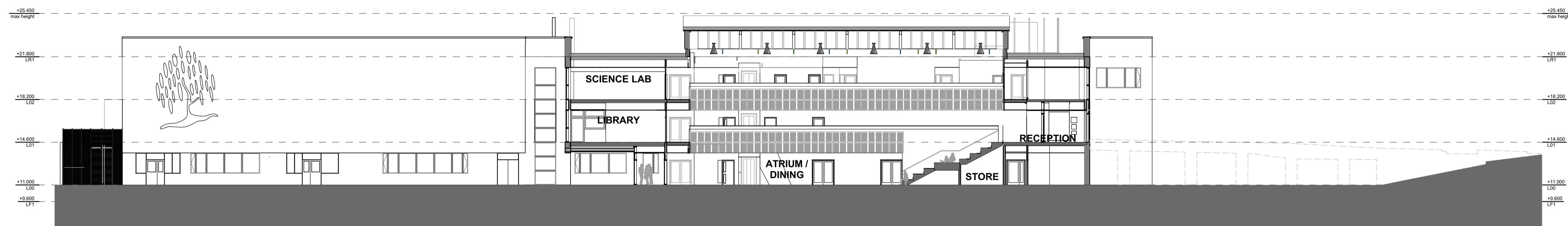
S04 EXISTING SECTION 1

1:200



Key

- Existing unaltered accommodation
- Remodelled/repurposed accommodation
- Demolished



S02 EXISTING SECTION 2

1:200

P02	ISSUE FOR PLANNING	2008/21	GS	CB
P01	STAGE 2 ISSUE	19/07/21	GS	CB
Rev	Change Name	Date	By	Chk
Revisions		Suitability		
Project		S2 INFORMATION		

WILLOWFIELD SCHOOL

Client

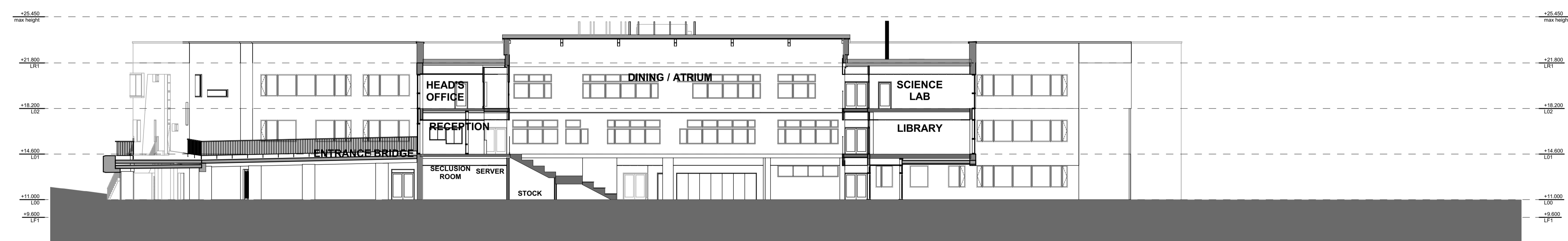


Title

EXISTING SECTIONS 1

Drawing No.	Revision
WIL-HLM-ZZ-ZZ-DR-A-00211	P02

Scale @ A1	Drawn
1:200	CB
Date	Checked
16/04/2021	CW



S03 EXISTING SECTION 3

1:200



© HLM Architects  
 Wool + Tailor Building  
 Fifth Floor  
 10-12, Alie Street  
 London E1 8DE

www.hlmarchitects.com  
 T. +44 (0) 20 7921 4800  
 F. +44 (0) 20 7921 4850  
 london@hlmarchitects.com

