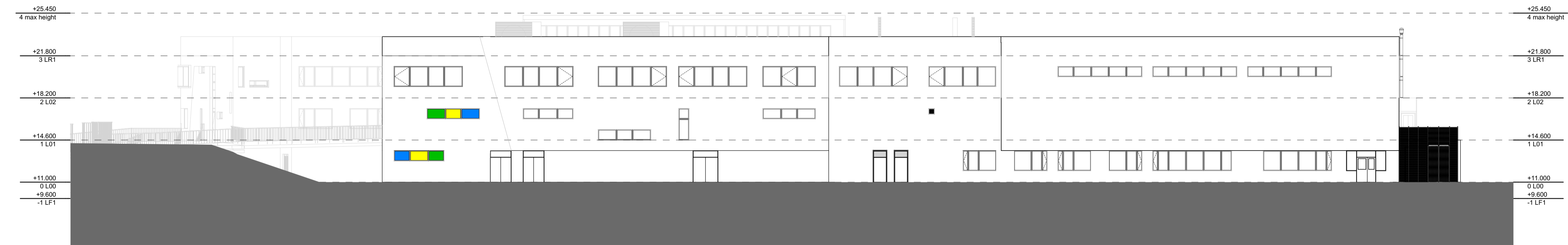
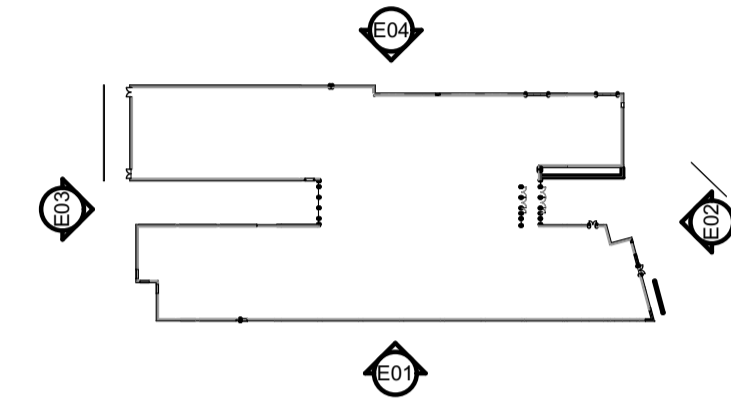


E02

EXISTING EAST ELEVATION

1:200



E04

EXISTING NORTH ELEVATION

1:200

Rev	Change Name	Date	By	Chk	Suitability
P03	ISSUE FOR PLANNING	200821	GS	CB	
P02	STAGE 2 ISSUE	190721	GS	CB	
P01	FIRST ISSUE	200421	CB	CW	

Project S2 INFORMATION

### WILLOWFIELD SCHOOL

Client



### EXISTING ELEVATIONS NORTH & EAST

Drawing No. WIL-HLM-ZZ-ZZ-DR-A-00312 Revision P03

Scale @ A1 1:200  
 Date 16/04/2021  
 Drawn CB  
 Checked CW



© HLM Architects  
 Wool + Tailor Building  
 Fifth Floor  
 10-12, Alie Street  
 London E1 8DE  
 www.hlmarchitects.com  
 T. +44 (0) 20 7921 4800  
 F. +44 (0) 20 7921 4850  
 london@hlmarchitects.com

