

- Design Typology (by link)**
- Enable contra-flow cycling
  - Footway widening and resurfacing
  - Implement Quiet Lane
  - Improve crossing provision along link
  - Investigate providing protected cycle facilities
  - Lighting and improvements to perceived safety
  - Provide high quality shared-use path
  - Provide light segregation for cyclists
  - Public realm enhancements including traffic calming
  - Speed limit reduction
  - Traffic calming
  - Traffic reduction measures (e.g. modal filtering or school street)
  - Upgrade existing shared-use
  - Upgrade existing shared-use path
  - Upgrade public right of way for pedestrians and cyclists
  - Wayfinding improvements
  - Uttlesford District Boundary

Foursquare, GeoTechnologies, Inc, METI/NASA, USGS  
 Maxar, Microsoft, Esri UK, Esri, TomTom, Garmin,

**PJA** G.03 Wenlock Studios  
 50-52 Wharf Road  
 London N1 7EU  
 T. 0207 566 3939

CLIENT

**UTTLESFORD DISTRICT COUNCIL**

PROJECT

**Uttlesford LCWIP**

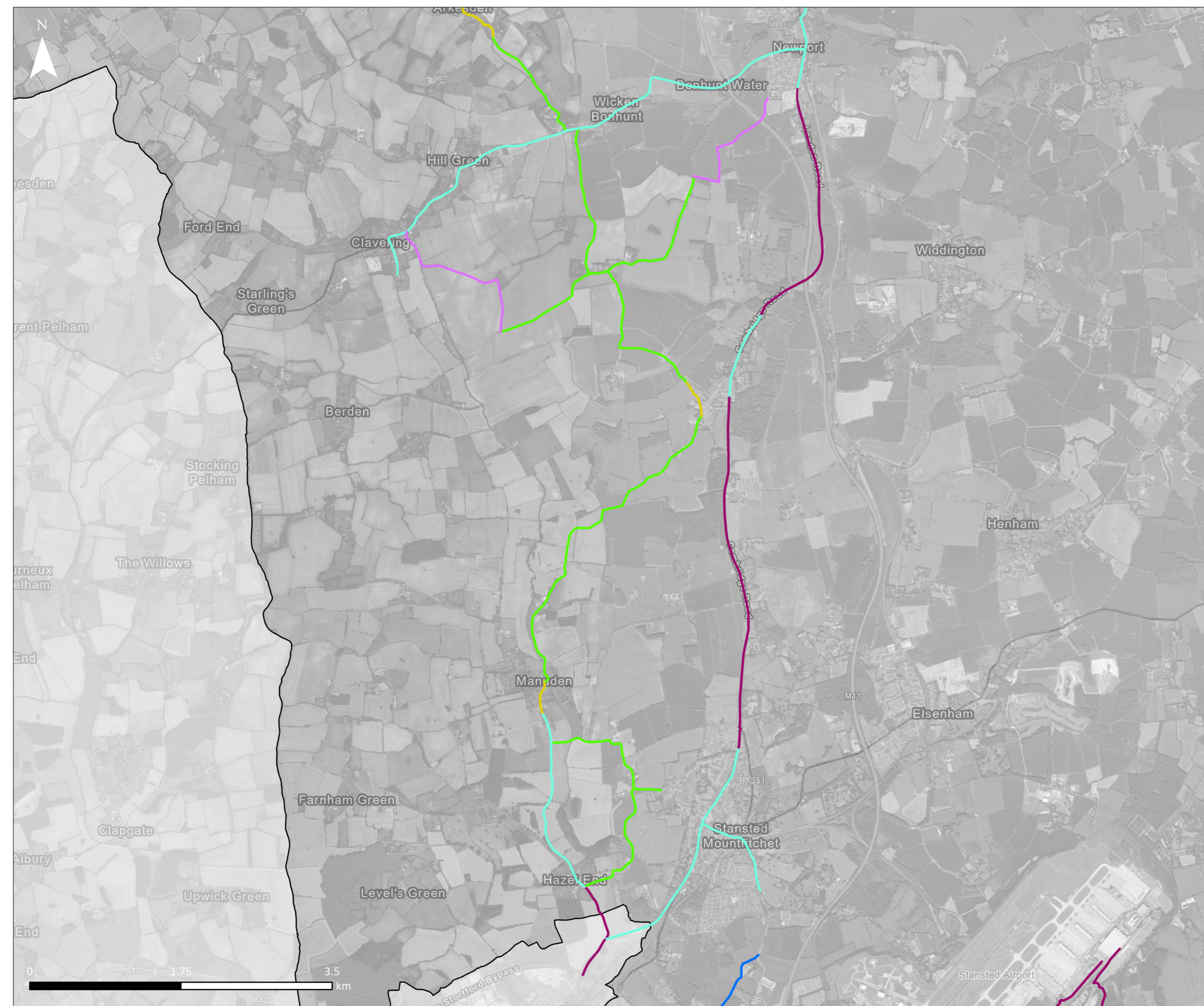
TITLE

**Design Intervention Summary - SCR A (North)**

FIGURE NUMBER	REVISION
79	A

SCALE	DRAWN	REVIEWED	DATE
A3 @ 1:40,000	DB	RJ	22/05/2024





- Design Typology (by link)**
- Implement Quiet Lane
  - Provide high quality shared-use path
  - Public realm enhancements including traffic calming
  - Traffic calming
  - Upgrade existing shared-use path
  - Upgrade public right of way for pedestrians and cyclists
  - Uttlesford District Boundary

Foursquare, GeoTechnologies, Inc, METI/NASA, USGS  
 Maxar, Microsoft, Esri UK, Esri, TomTom, Garmin,

**PJA** G.03 Wenlock Studios  
 50-52 Wharf Road  
 London N1 7EU  
 T. 0207 566 3939

CLIENT

**UTTLESFORD DISTRICT COUNCIL**

PROJECT

**Uttlesford LCWIP**

TITLE

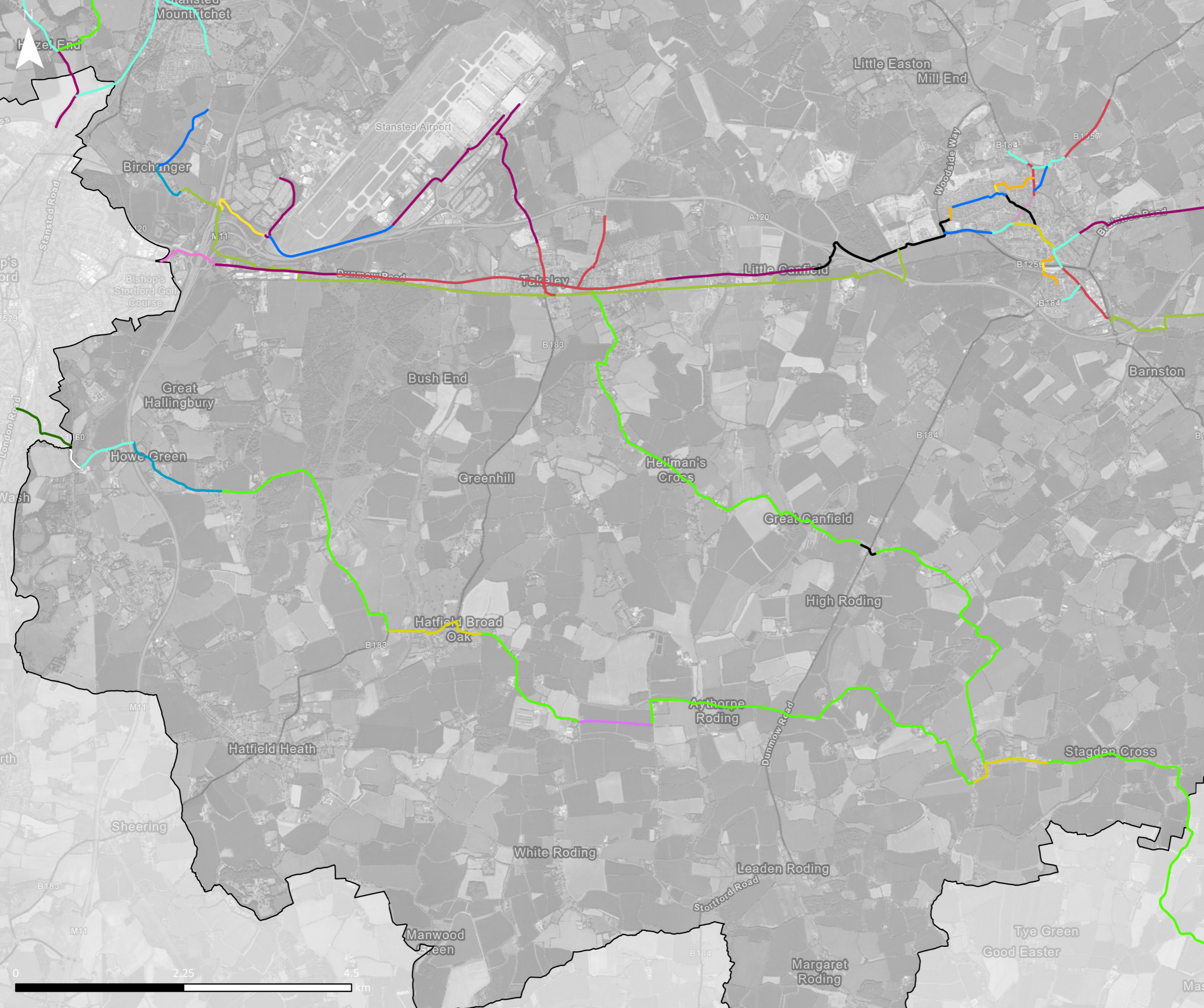
**Design Intervention Summary - SCR A (South)**

FIGURE NUMBER	REVISION
78	A

SCALE	DRAWN	REVIEWED	DATE
A3 @ 1:40,000	DB	RJ	22/05/2024







- Design Typology (by link)**
- Footway widening and resurfacing
  - Implement Quiet Lane
  - Improve crossing provision along link
  - Improvements to surfacing, crossing points, access controls and localised widening
  - Investigate providing protected cycle facilities
  - Lighting and improvements to perceived safety
  - Major junction improvements
  - Provide high quality shared-use path
  - Public realm enhancements including traffic calming
  - Review dropped kerbs and tactile paving
  - Speed limit reduction
  - Traffic calming
  - Traffic reduction measures (e.g. modal filtering or school street)
  - Upgrade existing shared-use
  - Upgrade existing shared-use path
  - Upgrade public right of way for pedestrians and cyclists
  - Wayfinding improvements
  - Uttlesford District Boundary

Foursquare, GeoTechnologies, Inc, METI/NASA, USGS  
 Maxar, Microsoft, Esri UK, Esri, TomTom, Garmin,

**PJA** G.03 Wenlock Studios  
 50-52 Wharf Road  
 London N1 7EU  
 T. 0207 566 3939

CLIENT

**UTTLESFORD DISTRICT COUNCIL**

PROJECT

**Uttlesford LCWIP**

TITLE

**Design Intervention Summary - SCR B and SCR C (West)**

FIGURE NUMBER	REVISION		
76	A		
SCALE	DRAWN	REVIEWED	DATE
A3 @ 1:46,875	DB	RJ	22/05/2024





- Design Typology (by link)**
- Footway widening and resurfacing
  - Improve crossing provision along link
  - Improvements to surfacing, crossing points, access controls and localised widening
  - Investigate providing protected cycle facilities
  - Lighting and improvements to perceived safety
  - Provide high quality shared-use path
  - Public realm enhancements including traffic calming
  - Review dropped kerbs and tactile paving
  - Traffic calming
  - Upgrade existing shared-use
  - Upgrade existing shared-use path
  - Wayfinding improvements
  - Uttlesford District Boundary

Foursquare, GeoTechnologies, Inc, METI/NASA, USGS  
 Maxar, Microsoft, Esri UK, Esri, TomTom, Garmin,

**PJA** G.03 Wenlock Studios  
 50-52 Wharf Road  
 London N1 7EU  
 T. 0207 566 3939

CLIENT

**UTTLESFORD DISTRICT COUNCIL**

PROJECT

**Uttlesford LCWIP**

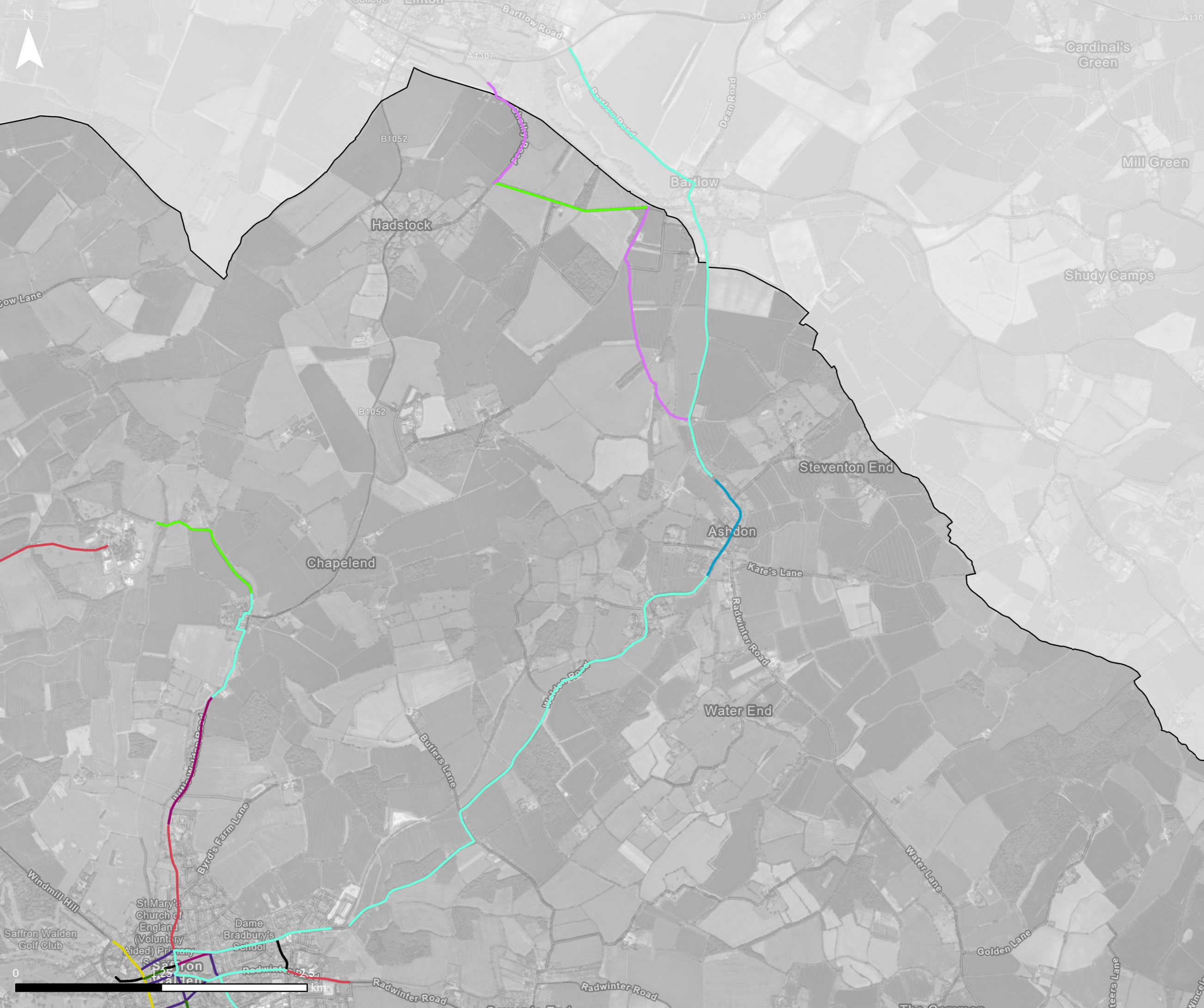
TITLE

**Design Intervention Summary - SCR C (East)**

FIGURE NUMBER	REVISION
77	A

SCALE	DRAWN	REVIEWED	DATE
A3 @ 1:35,000	DB	RJ	22/05/2024





- Design Typology (by link)**
- Enable contra-flow cycling
  - Implement Quiet Lane
  - Improve crossing provision along link
  - Investigate providing protected cycle facilities
  - Provide high quality shared-use path
  - Public realm enhancements including traffic calming
  - Speed limit reduction
  - Traffic calming
  - Traffic reduction measures (e.g. modal filtering or school street)
  - Upgrade public right of way for pedestrians and cyclists
  - Uttlesford District Boundary

Foursquare, GeoTechnologies, Inc, METI/NASA, USGS  
 Maxar, Microsoft, Esri UK, Esri, TomTom, Garmin,

**PJA** G.03 Wenlock Studios  
 50-52 Wharf Road  
 London N1 7EU  
 T. 0207 566 3939

CLIENT

**UTTLESFORD DISTRICT COUNCIL**

PROJECT

**Uttlesford LCWIP**

TITLE

**Design Intervention Summary - SCR D (Saffron Walden to Linton)**

FIGURE NUMBER	REVISION		
75	A		
SCALE	DRAWN	REVIEWED	DATE
A3 @ 1:30,000	DB	RJ	22/05/2024