

Appendix C: Index of Multiple Deprivation 2025

Background

- The 2025 English indices of deprivation (IoD) measures relative levels of deprivation between small areas or neighbourhoods, called Lower-layer Super Output Areas (LSOAs).
- The IoD25 suite of resources comprises 7 standalone indexes. These are combined and weighted together to form the Index of Multiple Deprivation 2025 (IMD25) – the official measure of deprivation in England.
- This is the first time this measure has been updated since 2019.
- The methodology used to calculate the IMD, and the underlying data, has changed since 2019 **so the figures are not directly comparable**
- However, it is still useful to note changes to the indices, as these will determine how levels of need in Slough are perceived by policymakers and other agencies

LSOAs

- There are 84 LSOAs in Slough. The IoD groups these LSOAs into deciles – where 1 is the 10% most deprived nationally and 10 the 10% least deprived.
- The table below shows the number of LSOAs in Slough that fall into each decile, for the different domains that comprise the IoD.

Domain	1	2	3	4	5	6	7	8	9	10
IMD 2025	0	8	18	21	15	11	5	2	3	1
Income	2	17	23	19	9	7	5	1	1	0
Employment	0	0	11	18	16	19	10	4	4	2
Education, Skills and Training	0	11	22	19	12	8	5	3	4	0
Health Deprivation and Disability	0	0	3	3	10	18	10	17	16	7
Crime	8	11	17	14	18	9	3	3	1	0
Barriers to Housing and Services	29	36	9	6	2	1	1	0	0	0
Living Environment	0	2	4	11	13	17	14	11	7	5
Income Deprivation Affecting Children	2	7	20	25	12	8	7	2	1	0
Income Deprivation Affecting Older People	5	21	20	12	11	8	3	3	1	0

Key points to note

- The data reveals a mixed picture across the borough, while some areas have seen improvements, others notably Cippenham and Farnham, have experienced increased deprivation. Refer to the latest charts and graphs below for further information.
- The methodology used to calculate the IMD and the underlying data has changed since 2019, therefore the figures are not directly comparable. However, key findings include:

IMD 2025 overall

- 26 of Slough's 84 LSOAs (31%) now fall within the 30% most deprived nationally.
- 8 (1%) of these LSOAs fall within the 20% most deprived nationally.

Barriers to housing and services

- 29 of Slough's 84 LSOAs (35%) rank in the 10% most deprived nationally.
- However, 66 in total (79%) fall in the 20% most deprived nationally.
- Only 2 LSOAs are above the national average for this domain of IoD.

Income Deprivation

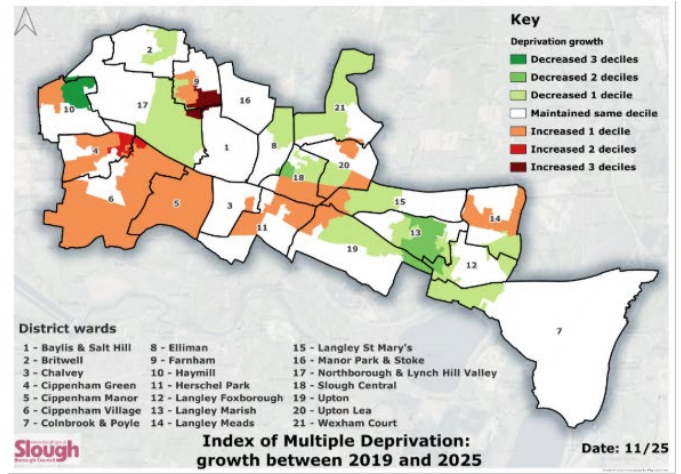
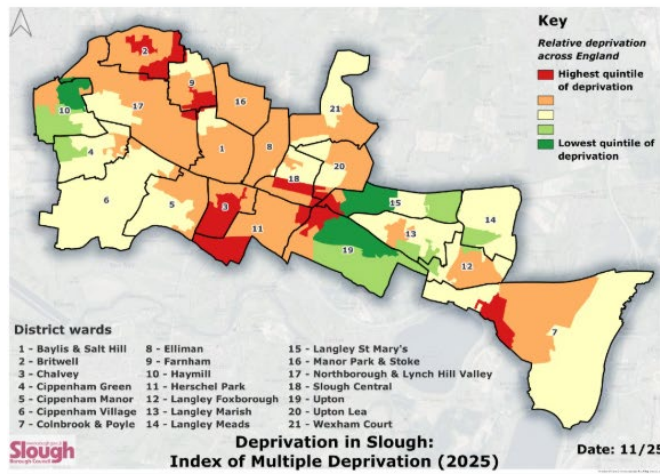
- 2 of Slough's LSOAs rank in the 10% most deprived nationally.
- 19 LSOAs fall in the 20% most deprived nationally.
- Compared to 2019 IMD, 26.3% increase in the number of LSOAs in the 30% most deprived nationally.
- For Income Deprivation Affecting Children increased by 28.3%.

Health Deprivation and Disability

- The percentage of LSOAs that are above the national average for the Health Deprivation and Disability Domain has increased by 56.6% compared to 2019 IMD.

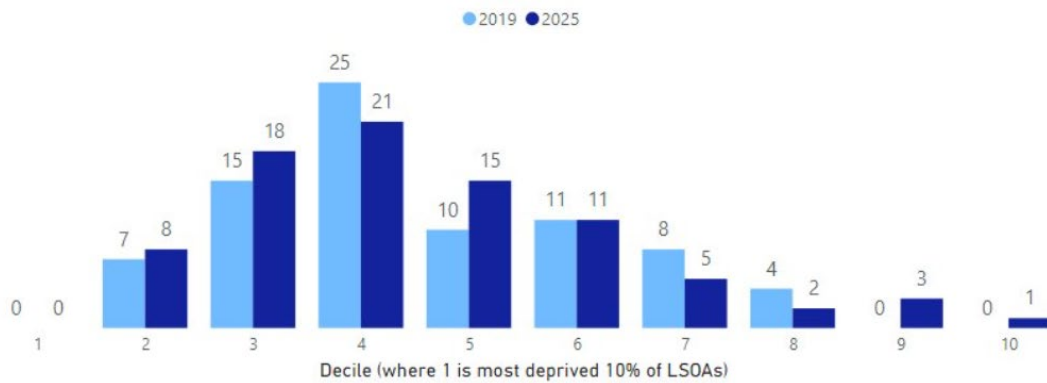
The council will use these updated insights to strengthen its strategic planning, enhance its evidence base and ensure services are responsive to the lived experiences of Slough's communities.

IMD 2025

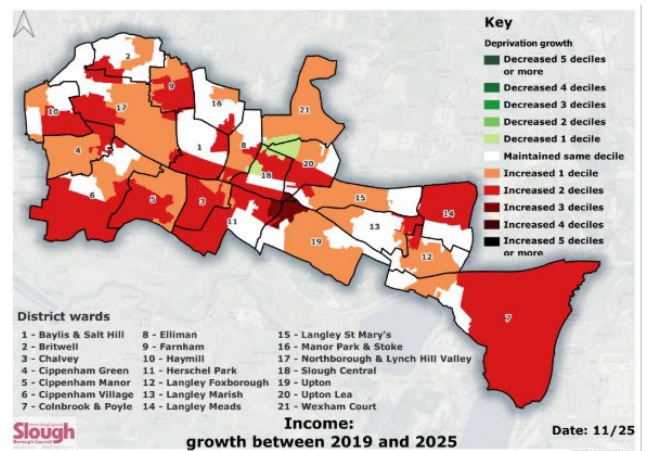
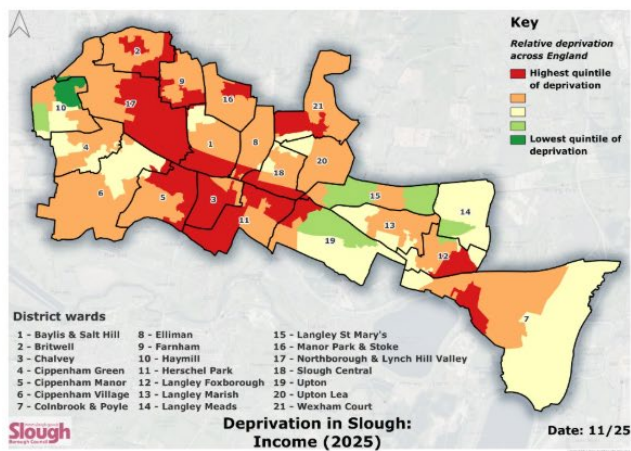


IMD 2025

LSOA Decile Distribution for Index of Multiple Deprivation (IMD)

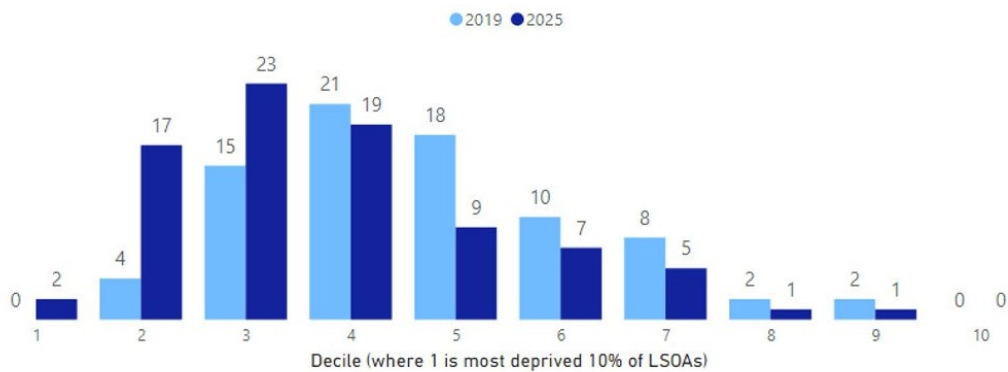


Income

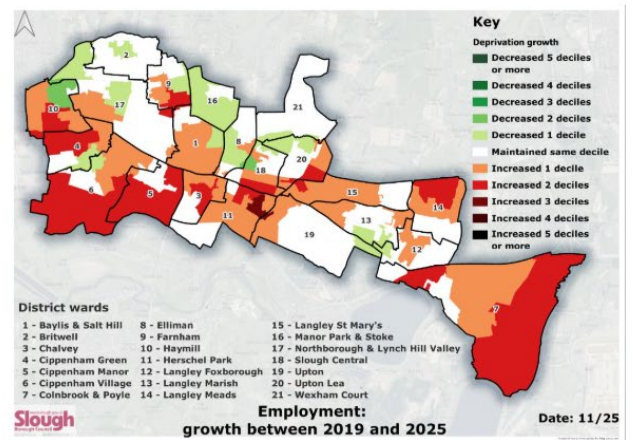
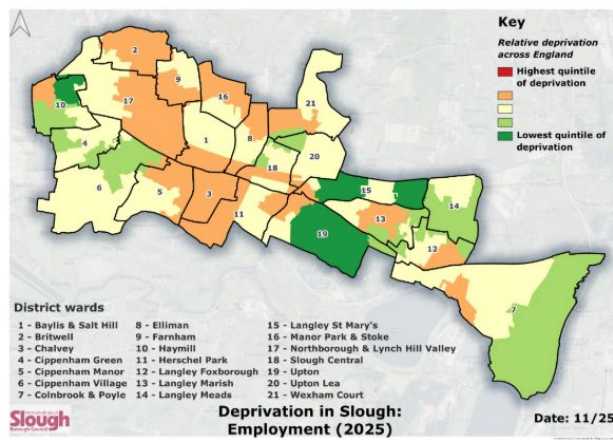


Income

LSOA Decile Distribution for Income

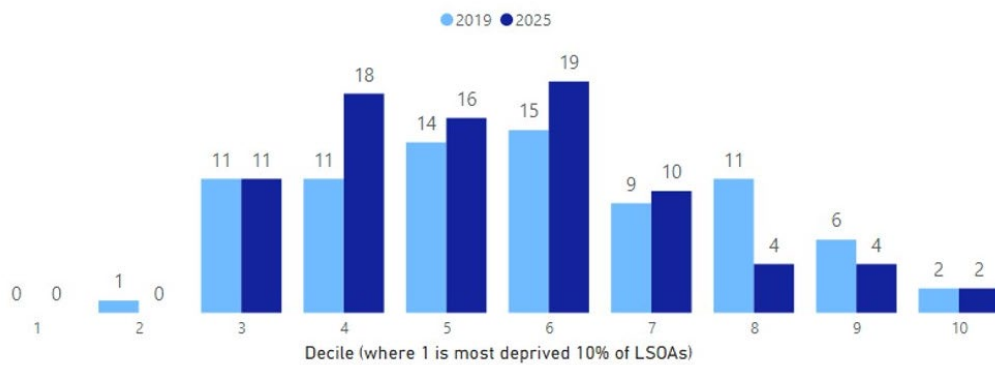


Employment

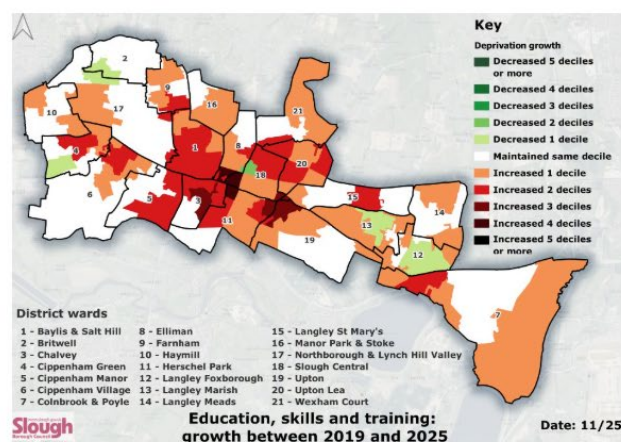
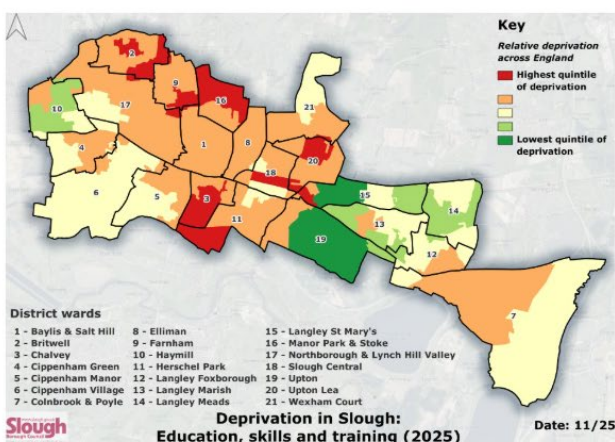


Employment

LSOA Decile Distribution for Employment

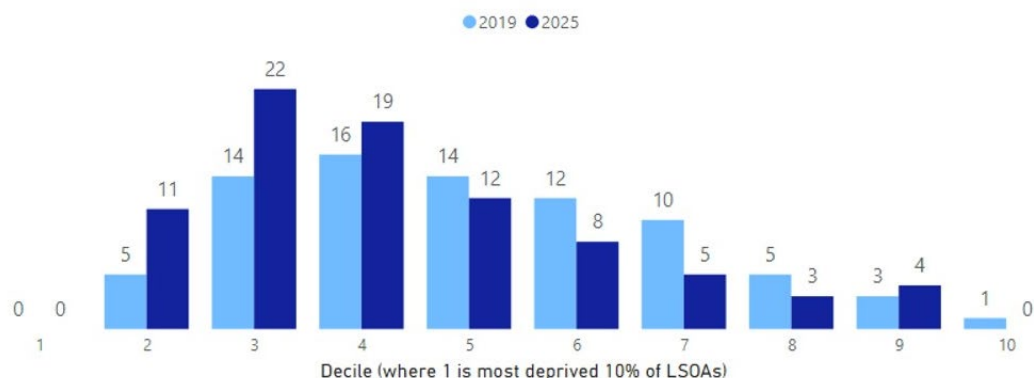


Education, Skills and Training

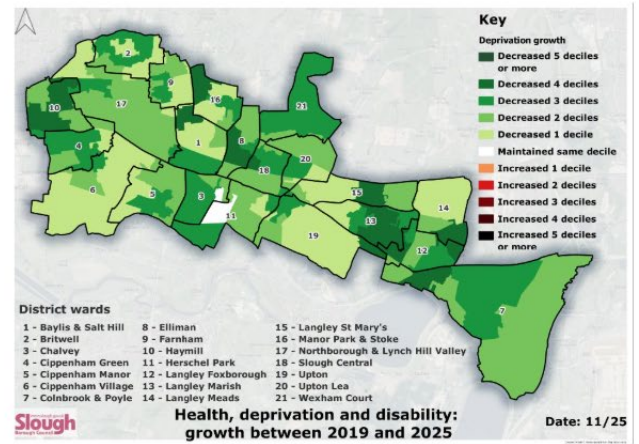
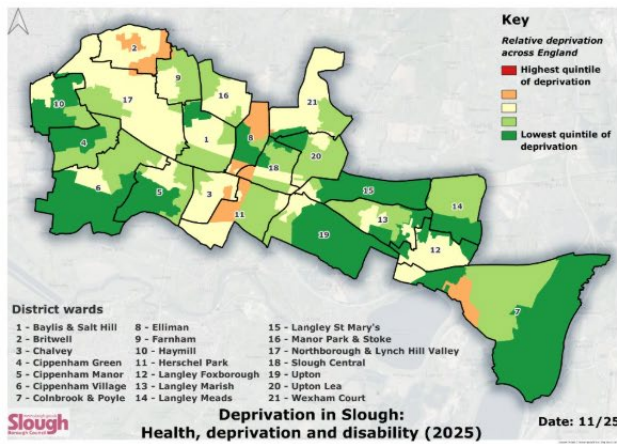


Education, Skills and Training

LSOA Decile Distribution for Education, Skills and Training

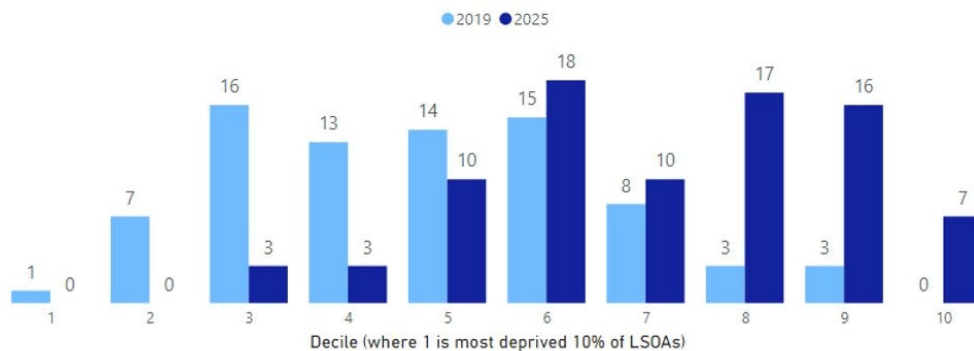


Health deprivation and disability

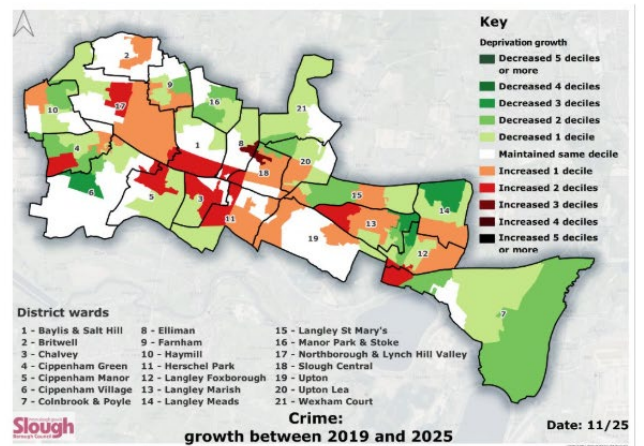
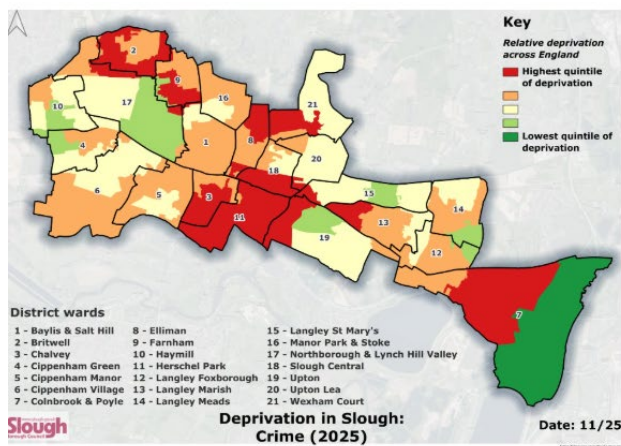


Health deprivation and disability

LSOA Decile Distribution for Health Deprivation and Disability

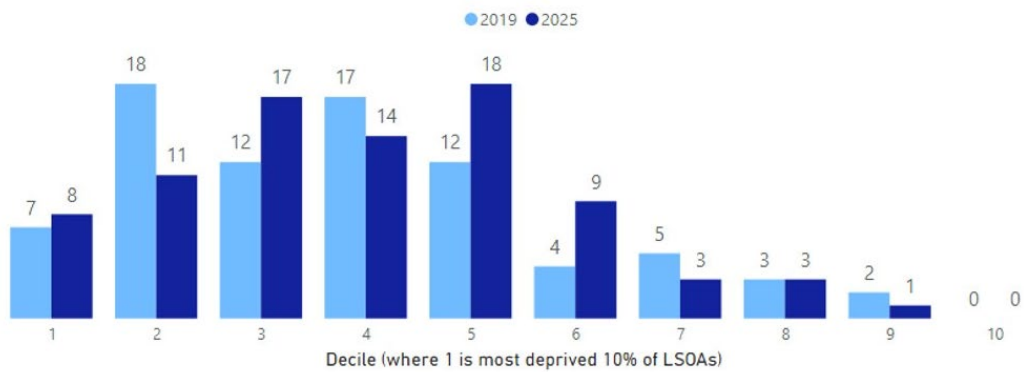


Crime

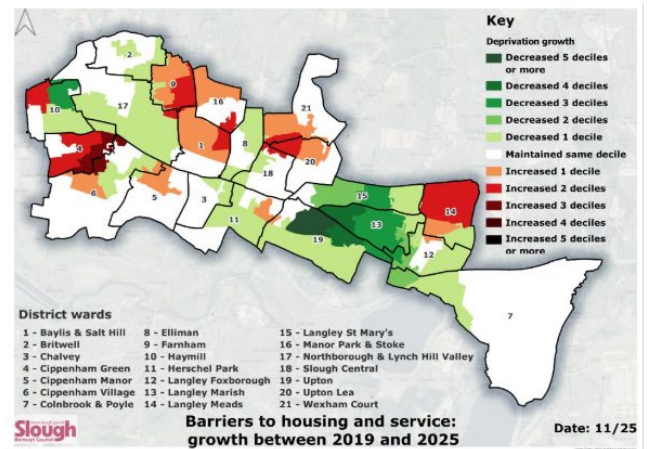
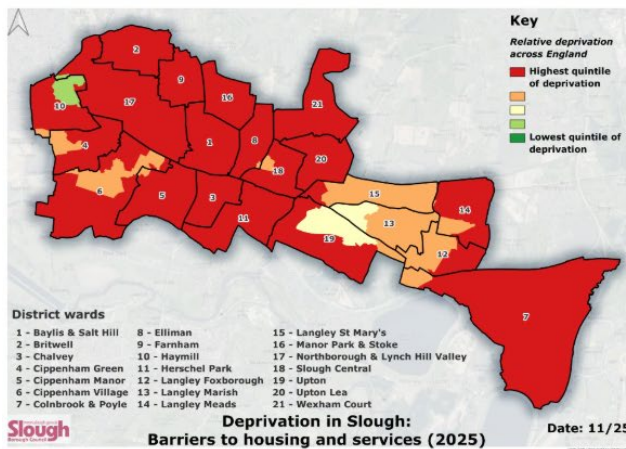


Crime

LSOA Decile Distribution for Crime

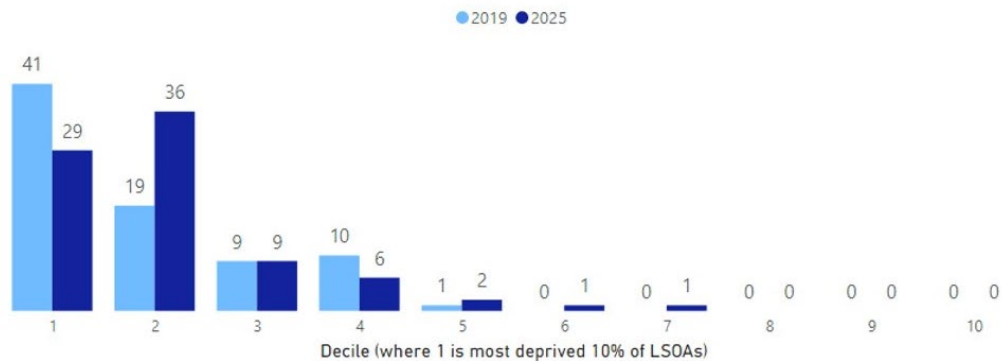


Barriers to Housing and Services

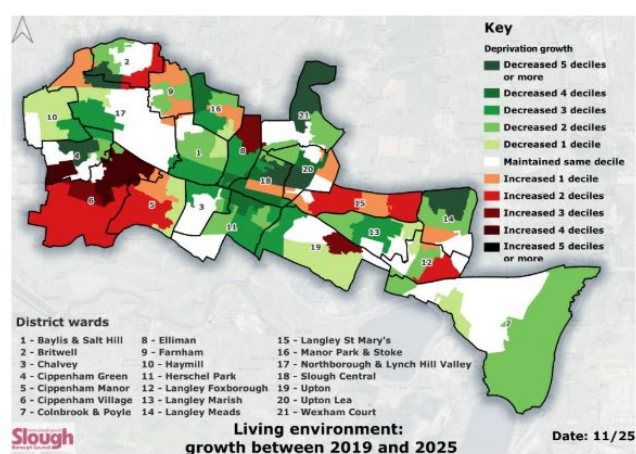
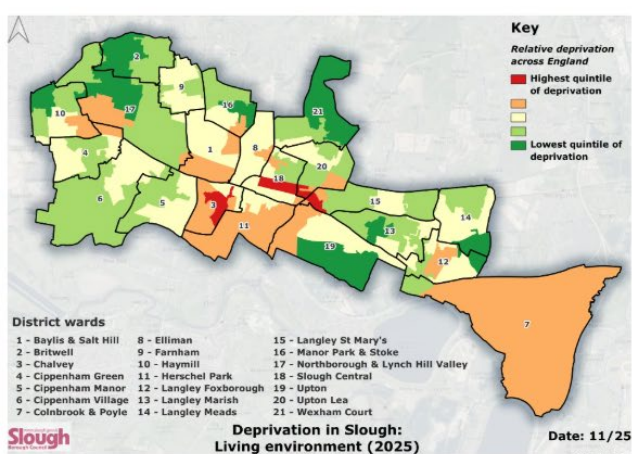


Barriers to Housing and Services

LSOA Decile Distribution for Barriers to Housing and Services

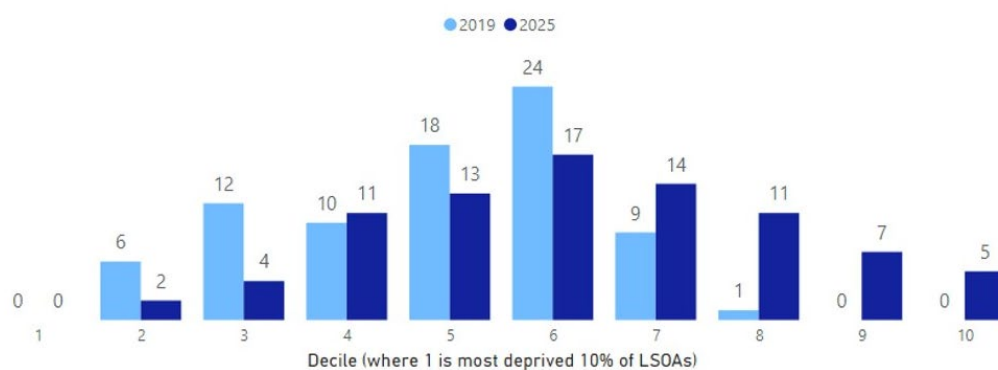


Living Environment

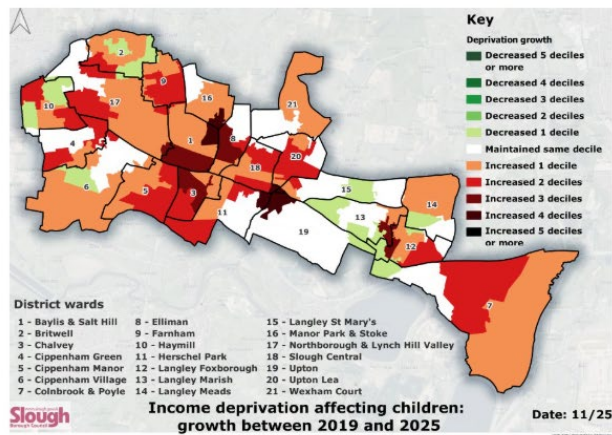
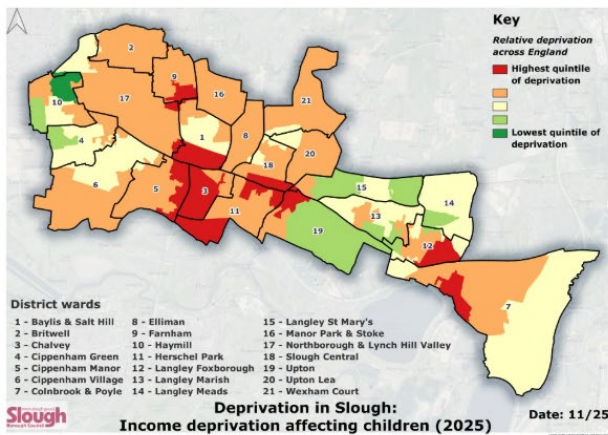


Living Environment

LSOA Decile Distribution for Living Environment

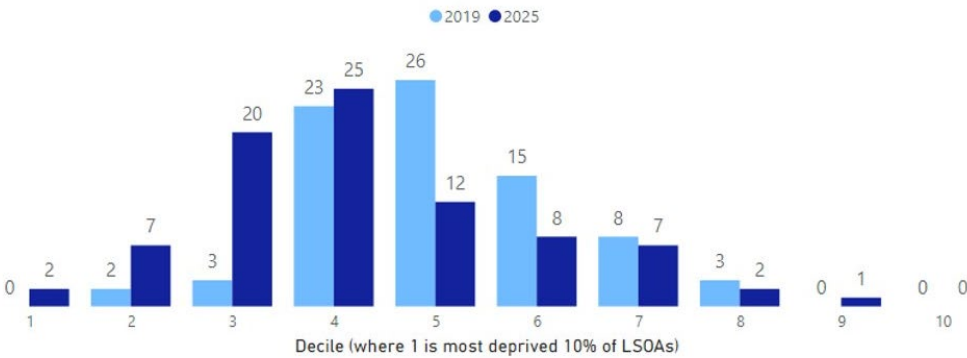


Income Deprivation Affecting Children Index

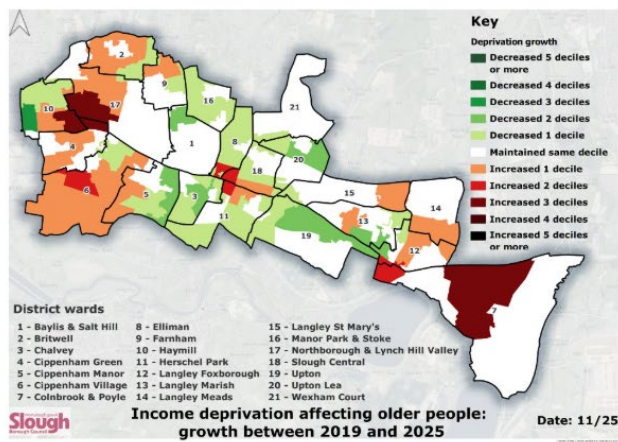
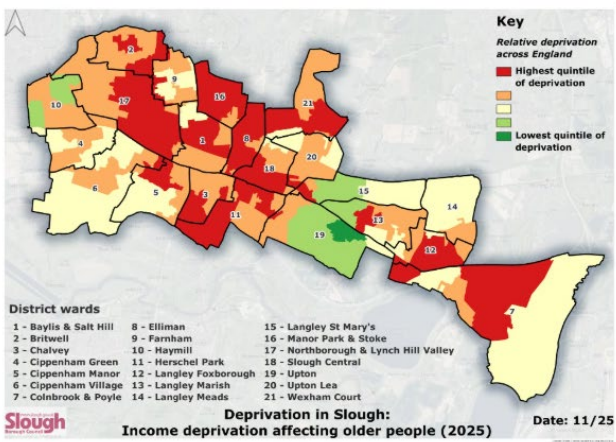


Income Deprivation Affecting Children Index

LSOA Decile Distribution for Income Deprivation Affecting Children Index (IDACI)



Income Deprivation Older People Index



Income Deprivation Older People Index

LSOA Decile Distribution for Income Deprivation Affecting Older People (IDAOP)

