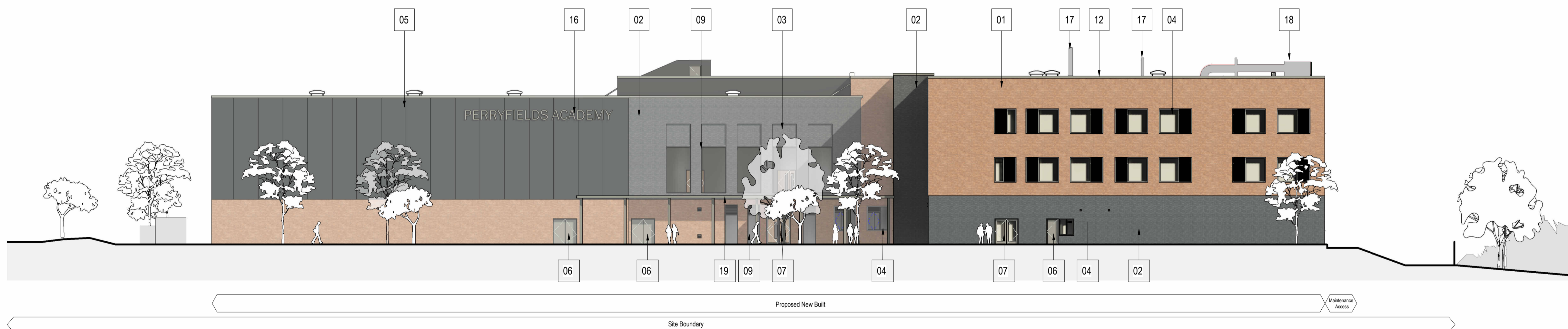


1 South Elevation  
1:200



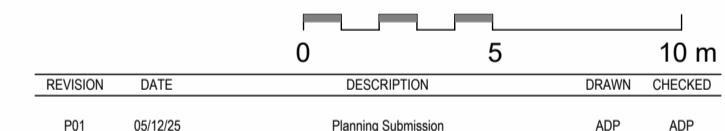
2 North Elevation  
1:200

**BUILDING MATERIAL KEY:**

- |   |  |   |
|---|--|---|
| <ul style="list-style-type: none"> <li>1. <b>Facing brick</b><br/>Red</li> <li>2. <b>Facing brick</b><br/>Dark Grey</li> <li>3. <b>Facing brick, recessed between windows</b><br/>Dark Grey</li> <li>4. <b>PPC aluminium framed window with louvres where indicated</b><br/>Dark grey</li> <li>5. <b>Cladding panels, PPC Matt finish</b><br/>Grey</li> <li>6. <b>PPC solid aluminium doorset with louvres where shown</b><br/>Dark grey</li> </ul> | <ul style="list-style-type: none"> <li>7. <b>PPC aluminium framed glazed double or single doorset</b><br/>Dark grey frame</li> <li>8. <b>Door hoops</b><br/>Stainless Steel</li> <li>9. <b>PPC aluminium capped curtain wall glazing system</b><br/>Dark grey</li> <li>10. <b>Louvres</b><br/>Dark Grey</li> <li>11. <b>Rain Water Pipe</b><br/>Dark Grey</li> <li>12. <b>Photovoltaic panels</b></li> </ul> | <ul style="list-style-type: none"> <li>13. <b>PPC aluminium parapet capping</b><br/>Dark grey</li> <li>14. <b>Roof level guarding around rooflights</b><br/>Grey</li> <li>15. <b>Staircore pop-up roof</b><br/>Dark grey</li> <li>16. <b>PPC aluminium non-illuminated building signage</b></li> <li>17. <b>Wind catchers</b></li> <li>18. <b>AHU</b></li> <li>19. <b>External Canopy with PVs mounted on top, gutter drained to corners</b></li> </ul> |
|---|--|---|



**PLANNING**



REVISION	DATE	DESCRIPTION	DRAWN	CHECKED
P01	05/12/25	Planning Submission	ADP	ADP

CHECK ALL DIMENSIONS AND VERIFY ON SITE. REPORT ANY ERRORS OR OMISSIONS.

**adp** 33a Victoria Street  
Birmingham  
B1 3ND  
T +44 (0) 121 234 6440  
E birmingham@adp-architecture.com  
www.adp-architecture.com

JOB TITLE:  
**Perryfields Academy**

DRAWING TITLE:  
**Proposed Elevations- North & South**

SCALE: <b>As indicated</b>	DRAWING SHEET SIZE: <b>A1</b>
DRAWING NUMBER: <b>SRP1295-ADP-01-ZZ-D-A-01207</b>	REVISION: <b>P01</b>
SUITABILITY: <b>S5</b>	