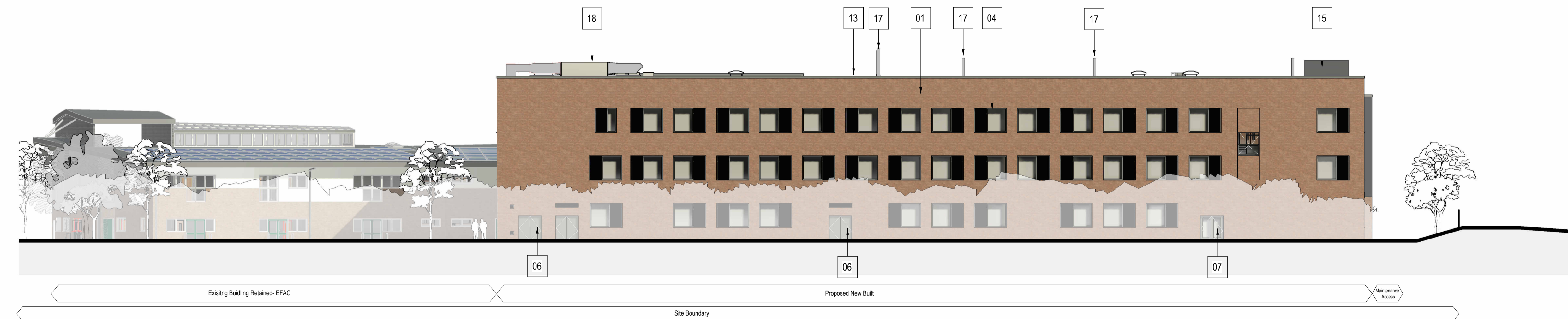


1 East Elevation  
1:200



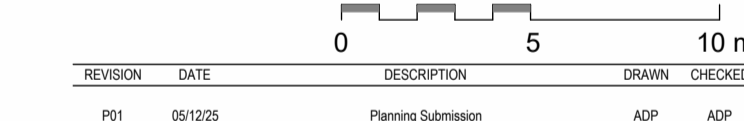
2 West Elevation  
1:200

**BUILDING MATERIAL KEY:**

- |   |  |  |
|---|--|--|
| <ul style="list-style-type: none"> <li>1. Facing brick<br/>Red</li> <li>2. Facing brick<br/>Dark Grey</li> <li>3. Facing brick, recessed between windows<br/>Dark Grey</li> <li>4. PPC aluminium framed window with louvres where indicated<br/>Dark grey</li> <li>5. Cladding panels, PPC Matt finish<br/>Grey</li> <li>6. PPC solid aluminium doorset with louvres where shown<br/>Dark grey</li> </ul> | <ul style="list-style-type: none"> <li>7. PPC aluminium framed glazed double or single doorset<br/>Dark grey frame</li> <li>8. Door hoops<br/>Stainless Steel</li> <li>9. PPC aluminium capped curtain wall glazing system<br/>Dark grey</li> <li>10. Louvres<br/>Dark Grey</li> <li>11. Rain Water Pipe<br/>Dark Grey</li> <li>12. Photovoltaic panels</li> </ul> | <ul style="list-style-type: none"> <li>13. PPC aluminium parapet capping<br/>Dark grey</li> <li>14. Roof level guarding around rooflights<br/>Grey</li> <li>15. Staircore pop-up roof<br/>Dark grey</li> <li>16. PPC aluminium non-illuminated building signage</li> <li>17. Wind catchers</li> <li>18. AHU</li> <li>19. External Canopy with PVs mounted on top, gutter drained to corners</li> </ul> |
|---|--|--|



**PLANNING**



CHECK ALL DIMENSIONS AND VERIFY ON SITE. REPORT ANY ERRORS OR OMISSIONS

**adp** 33a Victoria Street  
Birmingham  
B1 3ND  
T +44 (0) 121 234 6440  
E birmingham@adp-architecture.com  
www.adp-architecture.com

JOB TITLE:  
**Perryfields Academy**

DRAWING TITLE:  
**Proposed Elevations- East & West**

SCALE: <b>As indicated</b>	DRAWING SHEET SIZE: <b>A1</b>
DRAWING NUMBER: <b>SRP1295-ADP-01-ZZ-D-A-01206</b>	REVISION: <b>P01</b>
SUITABILITY: <b>SS</b>	