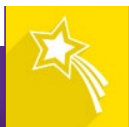


SANDWELL BETTER CARE FUND PLAN FOR 2024-25

Sandwell Health & Wellbeing Board 11 September
2024

Paul Moseley (Better Care Fund Programme Manager)



OVERVIEW OF THE BETTER CARE FUND (BCF)

- ❑ The BCF spans both the NHS and local government, integrating health and care services, so that people can manage their own health and wellbeing and live independently in their communities for as long as possible.
- ❑ The BCF encourages integration by requiring Integrated Care Board (ICBs) and local authorities to pool budgets and agree an integrated spending plan.
- ❑ The BCF offers a genuine opportunity for health and social care partners to develop effective and sustainable services capable of meeting the unique needs of our local people and communities.

PLANNING REQUIREMENTS: NATIONAL CONDITIONS

1. A jointly agreed plan between local health and social care commissioners and signed off by the Health and Wellbeing Board.
2. NHS contribution to adult social care to be maintained in line with the uplift to NHS minimum contribution
3. Invest in NHS commissioned out-of-hospital services.
4. Implementing the BCF policy objectives:
 - Enable people to stay well, safe and independent at home for longer.
 - Provide the right care in the right place at the right time.

BCF resources and spending plan 2024/25

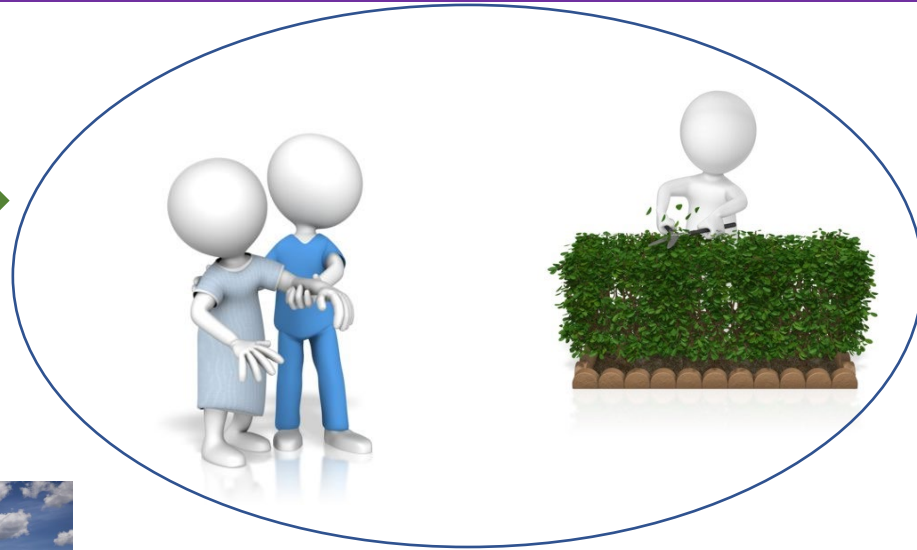


£70 million pooled budget

Funding Source	BCF Income 2024/25
DFG	£5,157,845
Minimum NHS Contribution	£33,465,559
iBCF	£23,021,429
Additional LA Contribution	£0
Additional NHS Contribution	£0
Local Authority Discharge Funding	£5,379,281
ICB Discharge Funding	£3,135,717
Total	£70,159,831

BCF Scheme Types	Allocation 2024/25
Assistive Technologies and Equipment	£ 4,514,039
Bed based intermediate Care Services	£ 422,469
Care Act Implementation Related Duties	£ 90,000
Carers Services	£ 460,000
Community Based Schemes	£ 2,189,303
DFG Related Schemes	£ 5,157,845
Enablers for Integration	£ 1,183,837
High Impact Change Model for Managing Transfers of Care	£ 25,182,604
Home Care or Domiciliary Care	£ 3,377,096
Home-based intermediate care services	£ 5,220,000
Housing Related Schemes	£ 71,000
Integrated Care Planning and Navigation	£ 5,832,087
ASC Internal Services	£ 3,847,000
Personalised Budgeting and Commissioning	£ 111,348
Residential Placements	£ 9,201,669
Urgent Community Response	£ 1,955,533
Workforce recruitment and retention	£ 1,344,001
Total	£ 70,159,831

Successes



Established integrated out of hospital care and support pathways

Leading on the Dementia Strategy and commissioning nationally recognised dementia support



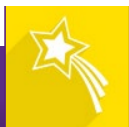
Established a ground-breaking social care and health reablement centre



Established the Integrated Discharge Hub to deliver person-centred care and support for people leaving hospital



Developed a new Community Offer



BCF ASSURANCE TIMETABLE 2024/25

Assurance milestone	Date
Scrutiny of BCF plans by regional assurers, assurance panel meetings and regional moderation	10 June 2024 to 15 July 2024
Regionally moderated assurance outcomes sent to BCF team	15 July 2024
Cross-regional calibration	Mid-July 2024 (date to be confirmed)
Commence issuing of approvals letters giving formal permission to spend (NHS minimum)	31 July 2024
All section 75 agreements to be signed and in place	30 September 2024

Questions?

