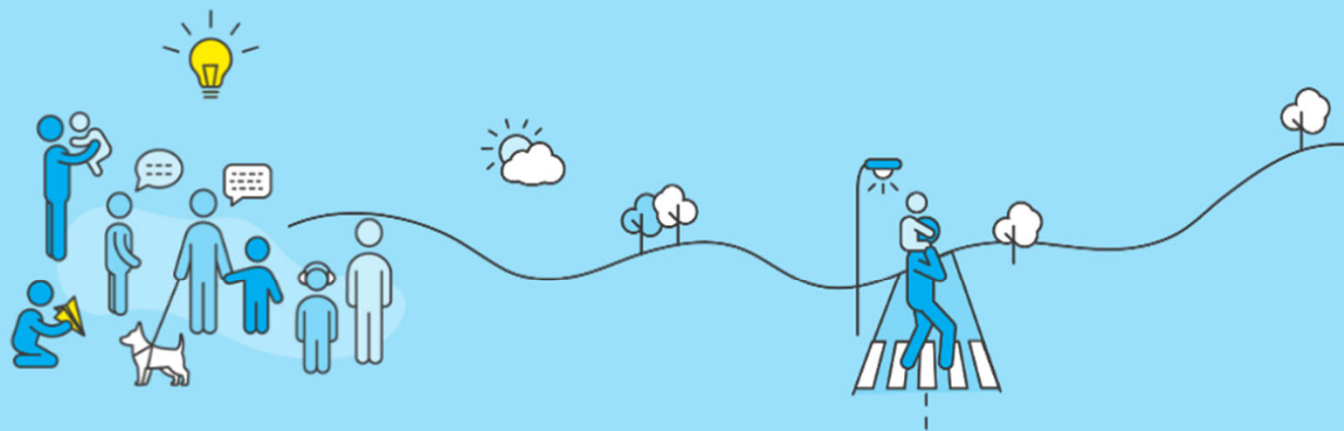


DISCOVERY

6 months

Activities can be carried out in **any order**, as long as they are all completed by the end of the Discovery Phase



MOU in place



Safeguarding

Robust and clear **safeguarding** arrangements are in place:

- Review CFC's safeguarding guidance and share with relevant staff
- Complete and return the CFC safeguarding checklist
- Nominate Designated Safeguarding Persons (DSPs)
- Host a UNICEF UK-facilitated briefing for DSPs



Baseline Study

A **baseline study** is completed against which impact will be monitored and evaluated, by, for example:

- Disseminating a survey to children, young people and professionals
- Speaking to children and young people at workshops or focus groups
- Looking at existing data



Communications

The partnership with UNICEF UK has been announced and a **communications** plan is in place to increase local knowledge of the programme:

- Include CFC in the council's annual communications plan
- Draft and submit a standalone CFC communications plan
- Publicly launch the programme
- Offer opportunities for communications staff to join UNICEF UK training sessions



CHILD FRIENDLY
CITIES &
COMMUNITIES



DISCOVERY

continued



Participation

Local **participation and engagement** teams understand the programme and opportunities are in place for children and young people to influence its development:

- Host UNICEF UK training sessions for participation and engagement teams
- Map existing local participation structures and explore alternative models of youth participation
- Support a group/structure/network of children and young people to influence decision-making



Governance

A committed and informed **governance structure** is in place, including Child Friendly City or Community Champions:

- Review the governance and coordination structure submitted at the Expression of Interest stage
- Ensure governance groups receive UNICEF UK child rights training
- Provide regular briefings for CFC Champions



Badges

There is a clear, evidence-based understanding of the existing situation for children and their priorities, and agreement on which three thematic **badges** to focus on during the programme:

- Review existing local data
- Host UNICEF UK-facilitated Youth and Community Discovery Days
- Consult more widely to close any gaps
- Draft and submit a badge summary

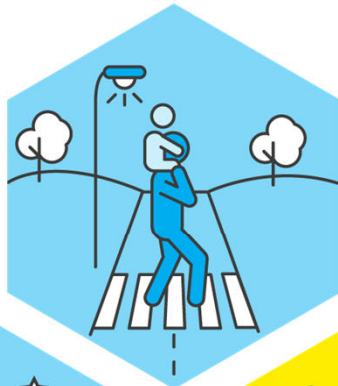
Consensus on **six badges**



CHILD FRIENDLY
CITIES &
COMMUNITIES



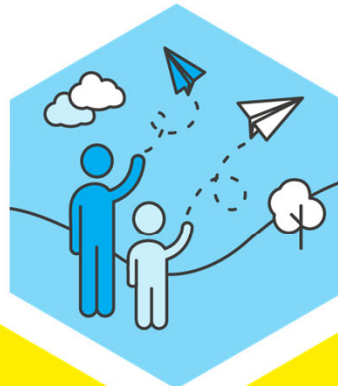
Safe & Secure



Flourishing



Education & Learning



Participating



Innovation



Culture



Communication



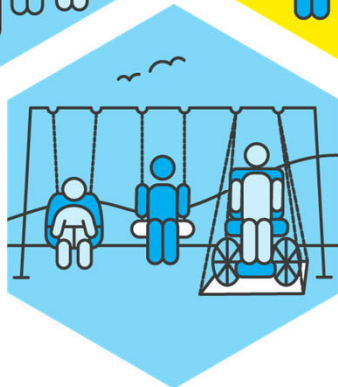
Co-operation & Leadership



Child-Friendly Services



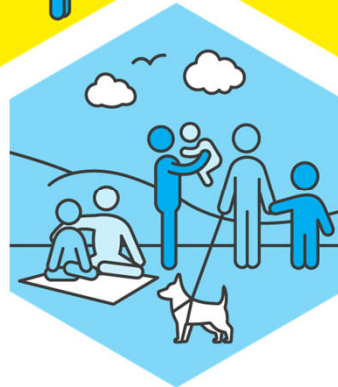
Equal & Included



Healthy



Family & Belonging



Place

