

Slough Harmful Practices Toolkit 2026-2029



Contents

How to use this toolkit	4
Introduction	5
Strategy and Governance	6
What are Harmful Practices?	7
Examples of Harmful Practices	7
Female Genital Mutilation (FGM)	8
FGM Protection Orders	8
Types of FGM	9
Statutory Reporting	10
Helping Women who have Already Undergone FGM	11
So-Called 'Honour Based' Abuse (HBA)	12
Domestic Violence Protection Orders	12
Forced Marriage	13
Forced Marriage Protection Orders	13
Complexity of Harmful Practice Cases and How to Respond	14
Context: International	15
National	16
Local	18
Conclusion	19
Appendix A	20
Appendix B	21
Slough Multi-Agency Harmful Practices (including Female Genital Mutilation) Pathway	
Appendix C	22
Appendix D	23

How to use this toolkit

This toolkit is designed for professionals in healthcare, education, social care, the police, and community services who may encounter individuals at risk of harmful practices. It provides practical guidance, legal context, and referral pathways to support safeguarding efforts.

Purpose:

- Equip practitioners with clear, actionable information to identify, respond to, and prevent harmful practices
- Promote a multi-agency approach to safeguarding
- Support survivors with access to appropriate services and resources

Audience:

- Anyone with a safeguarding responsibility or working with vulnerable individuals

How to navigate:

- Begin with the Introduction and Strategy to understand the framework
- Use the Harmful Practices section for detailed guidance on FGM, Honour-Based Abuse, and Forced Marriage
- Refer to the General Response section for best practices in safeguarding
- Access the appendices for support organisations, multilingual terminology, and national guidance links

Introduction

Harmful Practices adversely impact the health, safety and wellbeing of women and children. This strategy has adopted the UK government and UN strategic principles which state that some harmful practices, such as FGM, are:

- A crime
- A form of child abuse
- A form of violence against women and girls
- A violation of human rights and form of torture

See Appendix A, 1.

Professionals and volunteers from all agencies have a statutory responsibility to safeguard children from being abused. Equally, they have a duty to protect adults at risk, particularly those who may be vulnerable due to coercion, cultural pressures, or other factors that limit their ability to seek help. Therefore, this strategy provides a framework to support all ages.

See Appendix A, 2.



Strategy and Governance

This toolkit supports and is aligned with Slough's Harmful Practices Strategy, which sets out a clear, coordinated approach to tackling harmful practices such as Female Genital Mutilation (FGM), Honour-Based Abuse (HBA), and Child/Forced Marriage. The strategy prioritises prevention, early intervention, and survivor support, underpinned by a multi-agency safeguarding framework.

It emphasises:

- A shared understanding of harmful practices across services
- Consistent and culturally sensitive responses
- Empowerment of affected individuals and communities
- Accountability through robust governance and data monitoring.

Oversight and implementation of the strategy will be governed by the **Slough Domestic Abuse Board**, ensuring that harmful practices are addressed within the broader context of domestic abuse and safeguarding. This board brings together key partners to monitor progress, share intelligence, and drive improvements across the system.

This toolkit translates the strategic aims into practical guidance for frontline professionals, helping ensure that safeguarding responses are timely, lawful, and trauma-informed.

To access Slough Harmful Practices Strategy, See Appendix A, 3

What are Harmful Practices?

Harmful traditional practices are rooted in tradition, culture, custom, religion, or superstition and are often deeply ingrained within communities due to longstanding societal pressures. These practices are frequently carried out or supported by parents or influential adults within a child or young person's community.

Such practices encompass rituals, traditions, or actions that negatively impact the victim's physical, mental, and emotional well-being. They often reflect bias against certain groups, particularly girls and children with disabilities. Many involve physical abuse or infliction of pain, sometimes resulting in severe injury or death, while others cause significant psychological harm.

Deep-rooted gender inequalities mean that women and girls are mostly affected, however any gender can be at risk of harmful practices.

Examples of Harmful Practices

This strategy focuses on the three most prolific forms of harmful practices:

- Female Genital Mutilation (FGM)
- Honour Based Abuse (HBA)
- Child/Forced Marriage

However, please recognise that there are many different harmful practices and forms of Honour based abuse across the globe, including, but not limited to, the list below:

- Bride Price and Dowry Violence
- Breast Ironing
- Virginity Testing See Appendix A, 4
- Spirit Possession, Witchcraft, Religious Fervor See Appendix A, 5
- Son Preference/Sex Selection
- Preventing women from controlling their own fertility
- Conversion Therapy

The same referral pathway and processes should be followed by practitioners in all cases of harmful practices.

Beware of the following supposed 'shameful' behaviour that may include:

- Being LGBTQ+ or questioning your sexuality/gender identity
- Wearing make-up or 'unacceptable' clothing
- Having a relationship with an individual disapproved of due to culture, religion, etc.
- Not obeying family/community values/rules
- Seeking a divorce
- Refusing a marriage

Female Genital Mutilation (FGM)

Female Genital Mutilation (FGM) is defined by the World Health Organisation (2022) as all procedures involving the partial or total removal of the external female genitalia or other injuries to the female genital organs for non-medical purposes. It is a cultural practice considered a rite of passage and is believed to keep the girls safe and pure until marriage.

FGM is also referred to as female circumcision or cutting, with additional local terms including tahoor, absum, halalays, khitan, ibi, sunna, gudnii, bondo, and kutairi.

For other local terms, see Appendix D

In the UK, FGM is considered a form of child abuse and is strictly prohibited by law. It is illegal to perform FGM or to take a child abroad for the procedure, even if it is permitted in the destination country.

Female Genital Mutilation Protection Orders

A female genital mutilation (FGM) protection order can help if you are concerned that you, or someone you are supporting, has been subjected to, or is at risk of, FGM.

An application for a FGM protection order can be made at a family court in England and Wales.

Find out how to apply here: www.gov.uk/female-genital-mutilation-protection-order

For safeguarding practice guidance, see Appendix A, 6.

To help an individual with learning disabilities understand FGM, see Appendix A, 7.

If you are a GP, see Appendix A, 8.



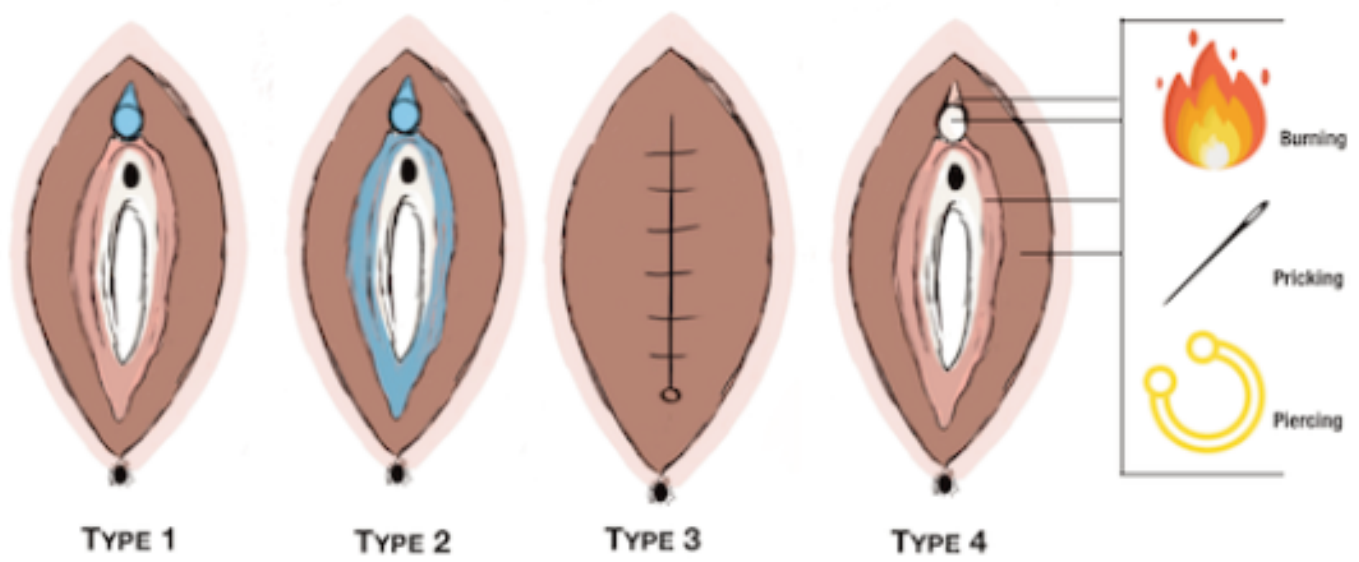
FGM is categorised into four types:

- **Type 1 (Clitoridectomy):** Partial or total removal of the clitoris and/or prepuce.
- **Type 2 (Excision):** Partial or total removal of the clitoris and labia minora, with or without removal of the labia majora.
- **Type 3 (Infibulation):** Narrowing of the vaginal opening by creating a covering seal through cutting and repositioning the labia minora and/or labia majora, with or without removal of the clitoris.
- **Type 4 (Other):** All other harmful procedures to the female genitalia for non-medical purposes, including piercing, pricking, incising, scraping, and cauterizing.

Types of FGM

■ Parts removed

✚ Stitches



TYPE 1

TYPE 2

TYPE 3

TYPE 4



Developing excellence in response to FGM and other harmful practices

Labia Minora Elongation (LME) is a form of Female Genital Mutilation (FGM) involving the stretching of the inner lips of the female external genitalia (labia minora) using substances such as herbs (e.g. *Solanum aculeastrum*, *Dunal*, *Bidens pilosa L.*), oils, creams (e.g. *cow cheese*), and other tools. The process continues until the desired length, typically between 2 and 8 centimeters, is achieved. Unlike other forms of FGM, LME is an extended procedure that inflicts physical and psychological suffering over a period of months or even years.

The age at which FGM is performed varies, however, the majority of cases are believed to occur between infancy and the age of 15, making girls within this age group particularly vulnerable.

Signs that a girl is at risk of FGM

- A female elder from a practising country is visiting the UK and is present in the family home
- A girl is going on an extended holiday to a practising country or will be continuing her education in a country of origin
- A girl may confide that she is going to have a 'special procedure' 'operation' or small injection
- A girl may confide that she is going to have a 'celebration' or attend a special occasion
- A girl may confide that she is going to 'become a woman'
- Parents seeking to withdraw a child from learning about FGM
- A mother who has undergone FGM

Statutory Reporting

Section 5B of the Female Genital Mutilation Act (2003) states that those in a 'regulated profession' (healthcare professionals, social workers and teachers) have both a mandatory duty to report FGM as well as personal duty. This means that they can inform their safeguarding lead for necessary support, but the duty to report to the police remains with them. This can be done online or via a call to 101. While teaching assistants and family support workers do not have a legal obligation under this section, they should still report concerns about FGM to their safeguarding lead in line with local safeguarding procedures.

For more advice on reporting procedures, see Appendix A, 9.



Indicators that a girl has undergone FGM

- A girl has difficulty walking, sitting or standing and may appear to be uncomfortable
- A girl spends longer than normal in the toilet due to difficulties menstruating/urinating
- A girl has frequent urinary, menstrual or abdominal problems
- There may be frequent absences from school or college
- Withdrawal or depression or significant behavioural change
- A reluctance to undergo medical examinations
- A girl may talk about pain or discomfort between her legs
- A girl may not partake in physical exercise
- The girl may be removed early, before the end of term, prior to a holiday or return late, after the start of a new term
- Unable to wear tights or trousers due to delayed healing
- Broken bones or bruises received from being held down and restrained during the procedure

Helping women who have already undergone FGM

See Appendix C

In the United Kingdom, there are specialised clinics known as National FGM Support Clinics (NFGMSCs). These community-based clinics offer a range of support services for women affected by FGM, including:

- Physical assessments and treatment, including deinfibulation if required
- Emotional support and counselling
- General information and advice
- Access to FGM Health Advocates
- Referrals to specialist consultants, if necessary

The services are provided by all-female teams to ensure a sensitive and non-judgmental environment. These clinics are free to access for anyone eligible for NHS care.

See your closest clinic here:

www.nhs.uk/conditions/female-genital-mutilation-fgm/national-fgm-support-clinics

The National Health Service (NHS) provides **deinfibulation** services through the FGM Support Clinics. **Deinfibulation** is a surgical procedure aimed at opening up the vaginal opening in women who have undergone female genital mutilation, specifically Type III FGM, also known as infibulation. This procedure can significantly improve a woman's quality of life by alleviating physical complications such as difficulties with menstruation, urination, and sexual intercourse, and by reducing risks associated with childbirth.

For girls under 18, support is available through the specialist paediatric service at University College London Hospitals (UCLH). Appointments can be arranged by emailing UCLH.paediatricsafeguarding@nhs.net.

Accessing these clinics can be done through referrals from GPs and other health professionals, walk-in appointments, or using a self-referral service.

Only clinicians highly trained on FGM should perform diagnosis examinations on children.

For more information, see Appendix A, 10.

So-Called 'Honour Based' Abuse (HBA)

It is important to acknowledge that there is presently no statutory definition of 'honour-based abuse' in England and Wales. However, a widely accepted definition has been adopted across government and criminal justice agencies. This defines honour-based abuse as an act or crime involving violence, threats, intimidation, coercion, or abuse (including psychological, physical, sexual, financial, or emotional), carried out to protect or uphold the 'honour' of an individual, family, or community in response to alleged or perceived violations of the family or community's code of conduct.

Domestic Violence Protection Orders

Domestic Violence Protection Orders can be used in cases of So-Called 'Honour Based' Abuse.

Please see here: www.gov.uk/government/publications/domestic-abuse-bill-2020-factsheets/domestic-abuse-protection-notices-orders-factsheet



Signs of potential So Called 'Honour-Based' Abuse:

- Being closely monitored by and accompanied wherever they go (strict guardianship)
- Expression of fear of being disowned, ostracised, or harmed
- Kidnapping and false imprisonment used as a coercive tactic to punish or control
- Transnational Abandonment - being coerced into returning to their country of origin against their will, potentially left without legal status, financial support, or a means of returning
- Forced abortion
- Murder

For safeguarding practice guidance, see Appendix A, 11.

Safety Planning for Victims of So-Called 'Honour-Based' Abuse

When supporting a victim of Honour-Based Abuse (HBA), it is crucial to develop a carefully considered strategy for ongoing contact that does not put them at further risk. Many victims are under strict surveillance by their families and communities, meaning any attempt to reach out could heighten their danger. A tailored approach should be taken based on the victim's unique circumstances, ensuring they have control over how and when they are contacted. Practitioners should explore safe methods of communication, such as using a trusted third party or agreeing on coded messages if appropriate. Any strategy must prioritise discretion and avoid leaving traces that could be discovered by perpetrators.

Forced Marriage

A forced marriage occurs when one or both individuals do not, or cannot (such as in cases involving learning disabilities or reduced capacity), consent to the marriage and are coerced or subjected to abuse to compel their participation. It is crucial to distinguish between forced marriage and arranged marriage. In an arranged marriage, families may assist in selecting and introducing potential partners, but the decision to accept or reject the arrangement remains with the individuals involved. If someone initially consents but later changes their mind and is denied the freedom to choose, the situation becomes a forced marriage.

The Marriage and Civil Partnership (Minimum Age) Act 2022 came into effect on Monday 27 February 2023, to protect children from forced marriage.

See Appendix A, 12.

Under this legislation, it is now illegal for anyone under the age of 18 in England and Wales to marry or enter a civil partnership under any circumstances, including with parental or judicial consent. Additionally, the offence of forced marriage continues to encompass non-legally binding marriage ceremonies, such as those conducted in community or traditional settings.

To understand how this occurs in Slough's Roma Community, See Appendix A, 13.

The **Forced Marriage Unit (FMU)** can be contacted via telephone: 0207 008 0151/ (+44) (0) 207 008 1500 Global Response Centre (out of hours) or via email: fmu@fco.gov.uk



Forced Marriage Protection Orders

Applications for Forced Marriage Protection Orders can be downloaded here: www.gov.uk/apply-forced-marriage-protection-order

For safeguarding practice guidance, see Appendix A, 14.



Signs that an individual may be facing Forced Marriage

- Absence or persistent absence from school or college
- Request for extended leave of absence and/or failure to return from travel to country of origin
- Fear about forthcoming school/college holidays
- Surveillance by siblings, cousins or wider family members
- Decline in behaviour, performance, or punctuality
- Being withdrawn from school by those with parental responsibility
- Removal from a day centre of a person with a physical or learning difficulty
- Prevented from going to further/higher education
- Sudden announcement of engagement to a stranger
- Fear of going home

Family history that could suggest increased risk of Forced Marriage

- Siblings forced to marry
- Early marriage of siblings
- Self-harm or suicide of siblings
- Death of a parent
- Family disputes
- Running away from home
- Unreasonable restrictions: i.e. kept at home by parents (house arrest) and financial restrictions

Complexity of Harmful Practice Cases and How to Respond See Appendix B

These crimes are inherently concealed, and it is crucial to understand the complex position victims face regarding their relationships with perpetrators. Many victims are reluctant to criminalise their parents, families, or culture. They are often warned that speaking out or defying the perpetrators' wishes will lead to ostracism, and a significant number are made to believe they are at fault, bringing shame upon those around them.

As a result, professionals may have only one opportunity to respond effectively to a disclosure of HBA, FM, or FGM, making it essential to provide an appropriate and informed response.

Involving families in cases of so-called 'honour-based' abuse and harmful practices is extremely dangerous and in no circumstances should agencies allow the person's family to find out about any disclosure.

Use the 'One Chance Rule'. The victim/survivor may only have one chance to make a disclosure, meaning you only have one chance to save and protect a life. See Appendix A, 15.

DO NOT:

- Send them away
- Approach members of the family
- Approach members of the community
- Accept family or community members statements without an 'honour'-based abuse targeted risk assessment and the relevant questions being asked
- Attempt mediation, reconciliation (such as family counselling) with the family and/or community members
- Approach the person at risk's family or community leaders/members - this could heighten the risk to them
- Share information without consent
- Declare any disclosure outside of the statutory agencies that need to be involved

DO:

- Take the disclosure seriously and act on it immediately
- Use non-stigmatising language
- Avoid judgemental terminology such as 'barbaric' and 'savage'.

Accurate record keeping in all cases of violence/abuse in the name of honour is important.

Records should:

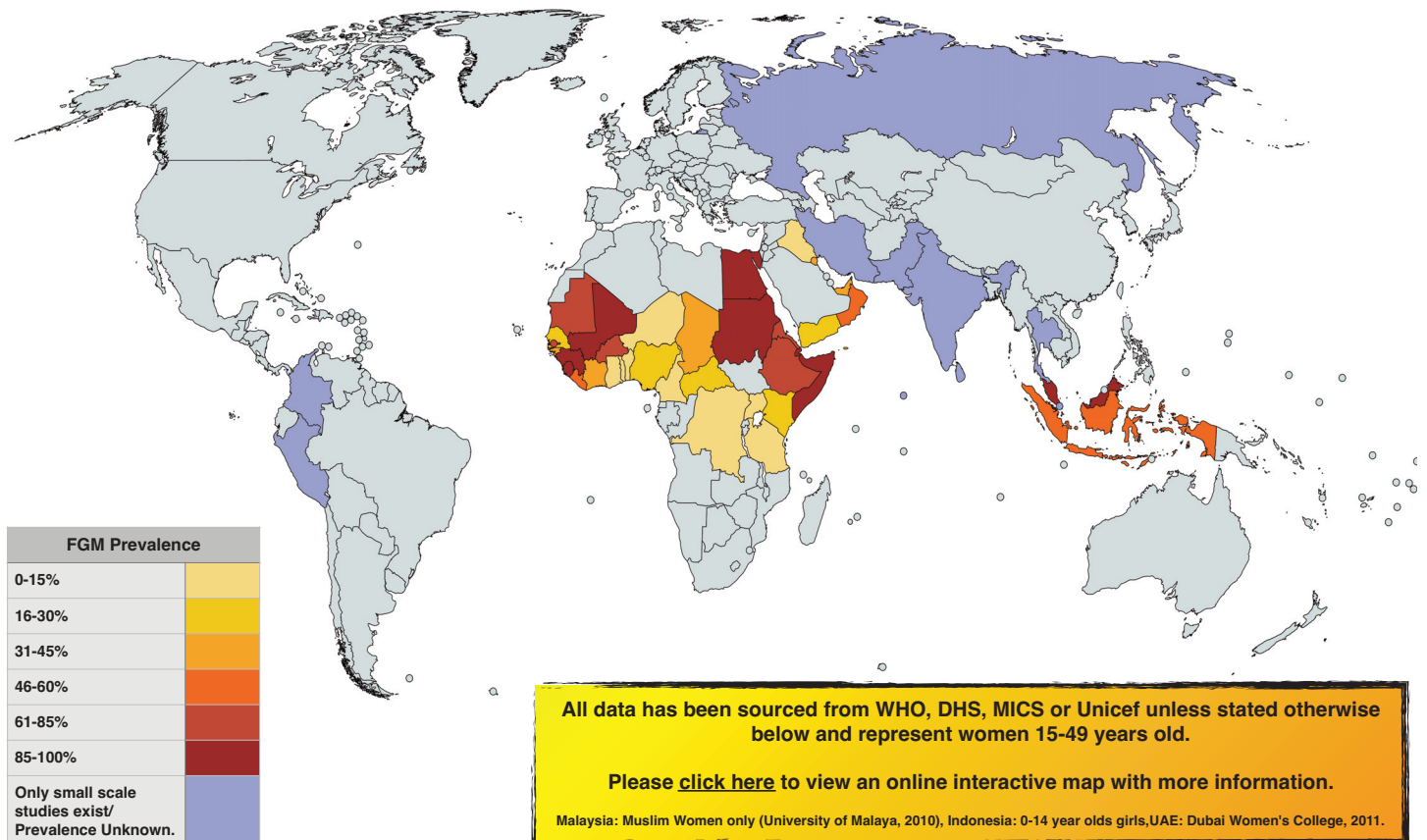
- Be accurate, detailed, clear and include the date
- Use the person's own words in quotation marks
- Document any visible injuries
- Ensure confidentiality - speak to, and seek advice from, the police and social care before reaching out to the family
- Follow your organisational safeguarding policies and procedures.

To understand Slough Borough Council safeguarding procedures, see Appendix A, 16.

To learn more about FGM, HBA, FM and other Harmful Practices, see Appendix A, 17.

International Context

FGM Global Prevalence Map (%)



To see with country names and percentages, see Appendix A, 18.

The countries listed in this chart have higher reported instances of FGM practices. When there are concerns about potential FGM, practitioners should be mindful of these ethnicities. However, it is crucial not to racially profile individuals; concerns must be based on specific evidence or cause, not assumptions. Racial profiling can lead to discrimination, harm trust, and hinder effective support for those who are at risk.

National Context: England

Age FGM was undertaken



53% of women who have undergone FGM, DO NOT know the age by which it was undertaken



Of the 47% that DO know the age FGM was undertaken:



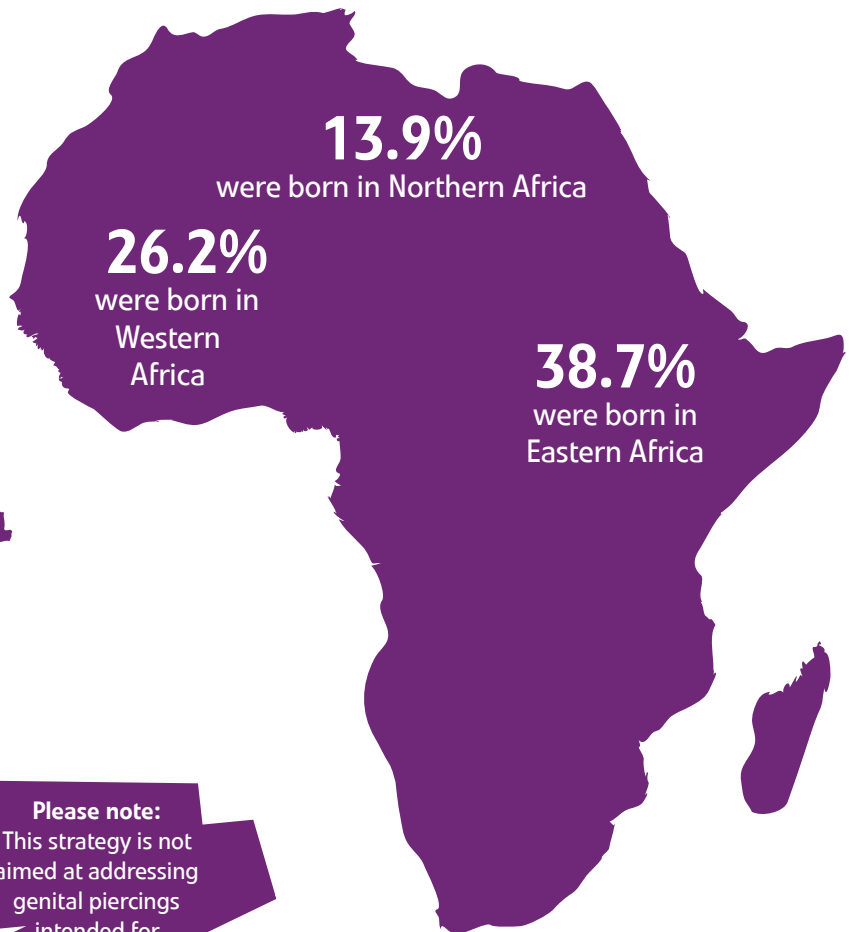
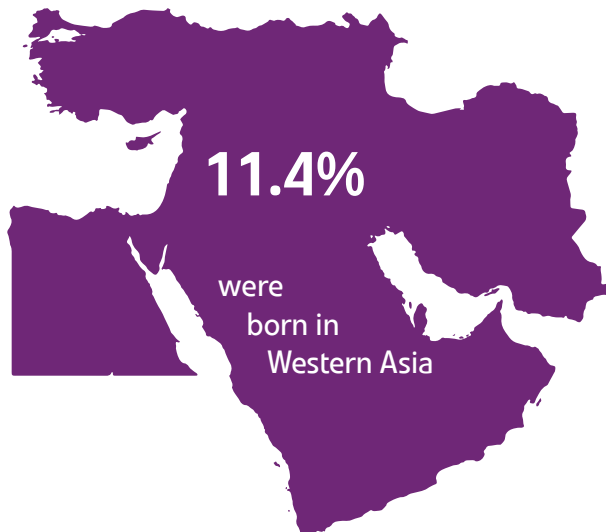
were under the age of five



were under the age of one

Region of Birth

Of **4,330** women and girls residing in England who underwent FGM and reported their region of birth:



Please note:
This strategy is not aimed at addressing genital piercings intended for sexual pleasure or aesthetic purposes.

For more information, see Appendix A, 19

Convictions

There have been three successful convictions for Female Genital Mutilation (FGM) in England.

First Successful FGM Conviction (1 February 2019)

In a landmark case, a 37-year-old mother was convicted for performing FGM on her three-year-old daughter. She initially claimed the injury was caused by falling onto a cupboard and later attempted to use witchcraft/hexes to obstruct the investigation. She was sentenced to 11 years in prison. This was the first conviction under the **FGM Act 2003**.

Aiding and Abetting FGM (26 February 2023)

A 16-year-old girl disclosed that she had been subjected to FGM as a child and named the individual who had facilitated her travel abroad for the procedure. This led to a conviction for **aiding and abetting FGM**, resulting in a **seven year prison sentence**. This case highlights the importance of survivor disclosures and international cooperation in tackling cross-border FGM.

Conspiracy to Commit FGM and Forced Marriage (9 September 2024)

A former PhD student was found guilty of conspiring to send a young girl to Iraq for both FGM and a forced marriage. This case reinforced the intersection between FGM and other harmful practices, such as forced marriage and honour-based abuse. The perpetrator received a **four-and-a-half year prison sentence**, marking another significant step in the UK's fight against FGM.



Local Context

Slough Integration Service has undertaken extensive work to support women who have been affected by FGM in country of origin, and struggle with the physical and psychological impact. Women have joined together to ensure that their daughters are not subjected to the procedure either in the UK or abroad.



For more information, see their website: slough-integration.org

Our community insights indicate that individuals continue to experience significant pressure, often from relatives in their country of origin, to undergo the procedure. It is essential that practitioners remain vigilant to these external influences and provide appropriate support to affected residents.

According to Thames Valley Police, there have been **11 crime and non-crime** occurrences of FGM related incidents in Slough since 2020

On average, in Slough, the police see **3½ cases** of So-Called 'Honour-Based' Abuse a month



At our normal ladies coffee morning, one of our ladies looked at her phone and was horrified at what she saw on her Facebook news feed. It was one of the local Immamis trying to justify his words. *'FGM is our culture and we shouldn't abandon it completely.'* Her face was dark and I could see she was disgusted. Then 15 other ladies looked at her and asked what she was reading, with all of them condemning the man and disagreeing with his opinion. They started talking about how they were blind before, but now they can understand by interpreting the law and religion in a healthy way. I was so proud of them, if this was ten years ago it would have been another story. I believe we have changed a lot of people's minds about FGM but we still have lots to do.

Slough Integration Community Leader

Conclusion

This document seeks to safeguard individuals at risk, provide comprehensive support to survivors, and strengthen multi-agency responses to these deeply harmful practices. By fostering a collaborative approach between partners, including the police, healthcare professionals, educators, and community leaders, we ensure that no individual faces these abuses alone. By implementing this strategy effectively, we create a safer, more informed, and more resilient community that challenges harmful practices and upholds the dignity and rights of all its residents.

Appendix A

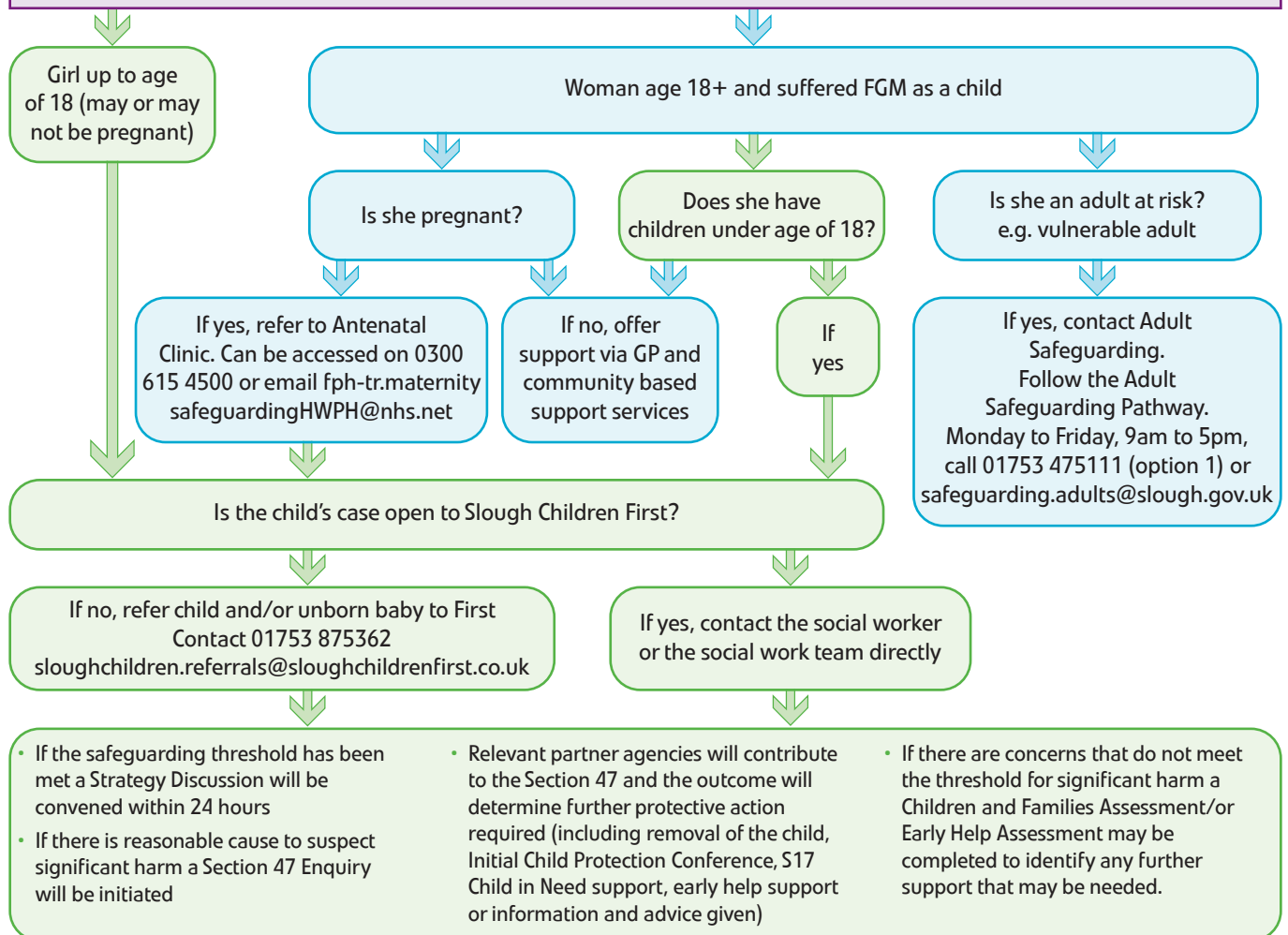
1. [National and International Laws on Harmful Practices – Slough Borough Council](#)
2. [Care Act 2014 and Children Act 1989](#)
3. [Slough’s Harmful Practices Strategy](#)
4. [Virginity testing and hymenoplasty: multi-agency guidance - GOV.UK](#)
5. [Child abuse linked to faith or belief | Thames Valley Police](#)
6. [Female Genital Mutilation and Other Harmful Practices](#)
7. [Female Genital Mutilation \(FGM\) information leaflet](#)
8. [GP’s FGM Advice - Slough Borough Council](#)
9. [FGM_Mandatory_Reporting_-_procedural_information_nov16_FINAL.pdf](#)
10. [FGM Examination Requests - Slough Borough Council](#)
11. [So-Called Honour-Based Abuse](#)
- 12a. [Marriage and Civil Partnership \(Minimum Age\) Act 2022](#)
- 12b. [Multi-agency statutory guidance for dealing with forced marriage and multi-agency practice guidelines: Handling cases of forced marriage \(accessible version\) - GOV.UK](#)
13. [Underage Roma Marriages in Slough](#)
14. [Forced Marriage](#)
15. [Honour-based abuse and harmful practices - Slough Borough Council](#)
16. [Procedures](#)
17. [Home - Savera UK Learning Hub](#)
18. [Hard Copy Map](#)
19. [Female Genital Mutilation, Annual Report - April 2023 to March 2024 - NHS England Digital](#)

Appendix B

Slough Multi-Agency Harmful Practices (including Female Genital Mutilation) Pathway

Health Professional, School, Early Years or Other Practitioner

- Identify women or girls where there are concerns in relation to FGM (known, suspected or at risk).
- Health professionals, refer to Health FGM Pathways.
- If you are not sure if a referral needs to be made seek advice from own agency safeguarding lead or Slough Children First Contact: 01753 875362 or email: sloughchildren.referrals@sloughchildrenfirst.co.uk
- For emergencies outside of office hours call the Emergency Duty Team on 01344 351999 or email: EDT@bracknell-forest.gov.uk
- If a decision is made that a child is at risk, practitioner must follow the process below and to contact Police immediately on 101 and refer to Slough Children's First.
- If an unborn child is at risk, practitioner must follow the process below and refer to SCST first contact team.
- If an adult is at risk, practitioner must follow the process below and refer to Adult Safeguarding: 01753 475111 (option 1) or email: safeguarding.adults@slough.gov.uk
- [Multi-Agency Referral Form \(MARE\)](#)



Additional information:

- Slough Integrated Service, based in Slough, support women affected in anyway by FGM and can be reached on 07958 296622.
- Sundial Oxford Email: www.sundialcentre.org info@sundialcentre.org
- NSPCC FGM Helpline Tel: 0800 028 3550 Email fgmhelp@nspcc.org.uk
- National FGM Centre: National FGM Centre - Developing excellence in response to FGM and other Harmful Practices
- Guidance and information:** Multi-agency statutory guidance on female genital mutilation - GOV.UK
- Risk Assessment Link: FGM Assessment Tool - National FGM Centre

Appendix C

Other Helpful Organisations	
<u>Midaye</u>	Tel: 0208 969 7456 Email: contact@midaye.org.uk
<u>28 Too Many</u>	Email: info@28toomany.org
<u>Africans Unite Against Child Abuse (AFRUCA)</u>	Tel: 0207 704 2261
<u>Agency for Culture and Change Management UK (ACCM UK)</u>	Tel: 0770 306 8189
<u>BAWSO</u>	Tel: 0292 064 4633 24-hour helpline 0800 731 8147 or Email: info@bawso.org.uk
<u>The Dahlia Project FGM Support and Counselling Service</u>	Tel: 0207 281 8970
<u>Daughters of Eve</u>	Text: 0798 303 0488
<u>Equality Now</u>	Tel: 0207 304 6902
<u>Foundation for Women's Health Research & Development (FORWARD)</u>	Tel: 0208 960 4000
<u>Freedom Charity</u>	Tel: 0845 607 0133 or text 4freedom to 88802
<u>The HALO Project</u>	Tel: 01642 683045 Email: info@haloproject.org.uk
<u>IKWRO – Women's Rights Organisation</u>	Tel: 0207 920 6460
<u>Karma Nirvana</u>	Tel: 0800 599 9247
<u>London Black Women's Health and Family Support (BWHAFS)</u>	Tel: 0208 980 3503
<u>National FGM Centre</u>	info@nationalfgmcentre.org.uk
<u>Home - Sundial Centre for Education on Harmful Practices (covers Thames Valley)</u>	Email: info@sundialcentre.org
<u>Southall Black Sisters (SBS)</u>	Tel: 0208 571 0800
<u>The Vavengers</u>	Email: info@thevavengers.co.uk
<u>Galop - LGBT anti-abuse charity</u>	Tel: 0800 999 5428 Email: help@galop.org.uk

Appendix D

Country	Language	Term(s) Used	Meaning
Benin	French	L'excision	Excision
Burkina Faso	French	L'excision	Excision
Burundi	Swahili	L'excision	Excision
	Swahili	Tohara kwa wanawake	Circumcision of women
Central African Republic	French/Sango	Ganza	
Chad	Nilo Sudanic Language	Bagne	
	Nilo Sudanic Language	Gadja	
Colombia	Embera	Curacion	Cure/healing/treatment
Cote d'Ivoire	French	L'excision	Excision
	English	Excision	Excision
Democratic Republic of the Congo	Swahili	Kukeketwa	Female Circumcision
	Swahili	Tohara kwa wanawake	Circumcision of women
Djibouti	Somali	Gudnin	Circumcision
	French	L'excision	Excision
Gambia	Mandinka	Niaka	Literally to cut/weed clean
	Mandinka	Kuyungo	The affair'/name given to the shed built for initiates
	Mandinka	Musolula Karoola	The women's side/that which concerns women
Ghana	English	Female circumcision	Female Circumcision
Guinea	English	Female circumcision	Female Circumcision
	English	Excision	Excision
	French	L'excision	Excision
Guinea-Bissau	Creole	Fanado	Circumcision
Egypt	Arabic	Khitan	Circumcision
	Arabic	Khifad	To lower
	Arabic	Thara	To clean/purify

Country	Language	Term(s) Used	Meaning
Ethiopia	Amharic	Megrez	Circumcision/cutting
	Harrari	Absum	Name giving ritual
Eritrea	Tigreña	Mekhnishab	Circumcision/cutting
	Amharic	Grazate	Circumcision
India	Lisan ud-Dawat (dialect of Gujarati)	Khatnauracion	Circumcision
Indonesia	Malay	Sunat perempuan	Female sunnah or tradition
	Malay	Sunat	Circumcision
Iran	Arabic	Khatne	Circumcision
	Kurdish (Sorani)	Khatana	Circumcision
	Farsi	Sunat	Circumcision
Iraqi Kurdistan	Kurdish (Bandini) and Arabic	Khatana	Circumcision
Java	Javanese	Kres	Hatching/Pricking
	Javanese	Tetesan	Hatching/Pricking
Kenya	Swahili	Kutairi	Circumcision
	Swahili	Kutairi was ichana	Circumcision of girls
	Swahili	Kukeketwa	Female Circumcision
	Swahili	Tohara kwa wanawake	Circumcision of women
Malawi	English	Initiation	Rite of passage
Malaysia	Malay	Wajib	Any religious duty commanded by Allah (God)
	Malay	Sunnah	Religious tradition/obligation (for Muslims)
Maldives	Divehi	Sunnah	Religious tradition/obligation (for Muslims)
Mali	French/Bambara	Selidjili	Ritual Purity
	French/Bambara	Selidjili	Ablution
	French/Bambara	Bolokoli	To wash your hands
	French/Bambara	Sunna	Religious tradition/obligation (for Muslims)
	French	Excision	Excision

Country	Language	Term(s) Used	Meaning
Mozambique	Swahili	Tohara kwa wanawake	Circumcision of women
	Swahili	Kukeketwa	Female Circumcision
Niger	Hausa	Kaciyar mata	Female Circumcision
Nigeria	Igbo	Ibi/Ugwu	The act of cutting
	Yoruba	Didabe fun omobirin/ ila kiko fun omobirin	N/A
	General/English	Circumcision	Circumcision
	Ibo	Isa aru	Bathing before delivery
	Mandingo	Sunna	Religious tradition/obligation (for Muslims)
Oman	Arabic	Khifad	Circumcision
	Arabic	Badhr	N/A
Pakistan	Urdu	Khatna	Circumcision
Panama	Embera	Curacion	Cure/healing/treatment
Peru	Embera	Curacion	Cure/healing/treatment
Philippines	Filipino	Pag-Islam	N/A
	Filipino	Sunnah	Religious tradition/obligation (for Muslims)
Rwanda	Kinyarwanda	Bukgukuna imishino	Labia Elongation
	Kinyarwanda	Guca imyeyo	Labia Elongation
Saudi Arabia	Arabic	Sunnah	Religious tradition/obligation (for Muslims)
Sierra Leone	Soussou	Sunna	Religious tradition/obligation (for Muslims)
	Temenee	Bondo	Integral part of an initiation rite into adulthood (for non-Muslims)
	Mendee	Bondo/sonde	Integral part of an initiation rite into adulthood (for non-Muslims)
	Mandinka	Halalays	Sanctioned - implies purity
	Mandingo	Bondo	Integral part of an initiation rite into adulthood (for non-Muslims)
	Limba	Bondo	Integral part of an initiation rite into adulthood (for non-Muslims)

Country	Language	Term(s) Used	Meaning
Singapore	Malay	Sunat perempuan	Female Sunnah/circumcision or tradition
	Malay	Sunat	Circumcision
	Malay	Khitan perempuan	Female Circumcision
Somalia	Somali	Gudiniin	Circumcision
	Somali	Halalays	Sanctioned - implies purity
	Somali	Qodiin	Stitching/tightening/sewing - referring to infibulation
Sri Lanka	Tamil	Sunnah	Religious tradition/obligation (for Muslims)
Sudan	Arabic	Khifad	To lower
	Arabic	Tahoor	To purify/circumcision
	Arabic	Takhor	To purify/circumcision
Tanzania	Swahili	Kukeketwa	Female Circumcision
	Swahili	Tohara kwa wanawake	Circumcision of women
Togo	English	Female circumcision	Female Circumcision
	French	Excision	Excision
Turkey	Turkish	Kadin Sunneti	Circumcision of women
Uganda	Sunnah	Religious tradition/ obligation (for Muslims)	N/A
	Swahili	Kukeketwa	Female Circumcision
	Swahili	Tohara kwa wanawake	Circumcision of women
Yemen	Arabic	Al-takmeed	Compression
Zimbabwe	U	Kwevha	Elongation of the labia minora
	Shona	Kudhonza	Elongation of the labia minora
	Arabic	Sunnah	Religious tradition/obligation (for Muslims)

With thanks to NHS Frimley, Frimley Health, HCRG, Care ICS, Berkshire Healthcare NHS Foundation Trust, and Slough Integration Service for their contribution.