

LONDON BOROUGH OF CAMDEN	WARDS: All
REPORT TITLE Annual Report of the Cabinet Member for Planning and a Sustainable Camden: 2024/25	
REPORT OF Cabinet Member for Planning and a Sustainable Camden	
FOR SUBMISSION TO Culture and Environment Scrutiny Committee	DATE 8 December 2025
SUMMARY OF REPORT The Cabinet Member for Planning and a Sustainable Camden provides the Culture and Environment Scrutiny Committee with his annual report for discussion. Local Government Act 1972 – Access to Information No documents that require listing have been used in the preparation of this report. Contact Officer: Amy Leung Cabinet Officer London Borough of Camden 5 Pancras Square London N1C 4AG 02079743310 amy.leung@camden.gov.uk	
RECOMMENDATIONS The Committee is asked to note and comment on the contents of the report.	

Signed:



Date: 26 November 2025

1. Introduction

- 1.1 I am proud to present the 2024/2025 Annual Report for the Planning and Sustainable Camden Portfolio, showcasing the Council's progress towards a fairer and greener future in Camden. While we know the impacts of climate change are escalating, we are keen to show you how Camden is prepared to face this challenge head-on. It is integral that the journey to a more sustainable Camden is taken in a way that listens to the community, works in partnership, and acts on our collective vision.
- 1.2 2025 marks the completion of Camden's [Climate Action Plan](#) 2020-2025 as we build on our successes to shape the next iteration of our sustainability journey. In recognition of the climate emergency that we face, we are embedding frameworks of resilience into our communities and building capacity to protect our residents, especially the most vulnerable, from climate change. Contributing to the good progress we are making to achieve our emission reduction targets, we are pleased to continue supporting residents to make sustainable changes in their daily lives. From increasing energy efficiency and lowering bills through retrofit support, to a number of awareness campaigns and community events, we are excited to advocate for a more sustainable Camden.
- 1.3 Camden is working for cleaner air quality both outdoors and indoors, recognising the impact air quality has on health. Camden Council remains fully committed to ensuring that no one in the borough suffers from poor health due to the air they breathe. As the first local authority to adopt the World Health Organization's updated air quality guidelines, Camden continues to lead the charge in tackling air pollution and setting ambitious standards for cleaner, healthier air. This year has seen a number of awareness campaigns to improve air quality including projects on anti-idling, reducing wood burning, and citizen science initiatives to get residents involved in measuring air pollution.
- 1.4 As places of exercise, recreation, and connection, we know residents use our green spaces to come together. From encouraging food growing to investing in our playgrounds, we want to support all the different ways that our residents use our diverse offering of greenspaces. We continue to work with local groups to get the best out of our green spaces and host a wide range of events to get residents involved. Nature also plays a key role across other Council services such as ensuring new developments incorporate biodiversity and recognising the contribution of greenspace to flood mitigation. Our Green Space Investment Programme (GSIP) has invested over £12.7 million between 2020 and 2025 into improving greenspaces across Camden.

- 1.5 We know transport is the very backbone for how people live their lives and travel in and around Camden. Camden's Transport Strategy (CTS) titled 'Healthy Streets, Healthy Travel, Healthy Lives' sets out Camden's objectives to make travel across Camden safer, healthier, and more sustainable. A particularly notable initiative this year has been the pedestrianisation trial of Camden High Street (north) which aims to create a safer and healthier place for residents, businesses, and visitors in an iconic and bustling area of Camden. We know that Camden residents are making more trips using sustainable modes of travel with an increase in walking and cycling. We continue to support our residents to make healthy, safe, and sustainable travel choices by giving them the means to do so (e.g through our Healthy Travel Choices programme which delivers cycle training and cycle loan). Camden is also getting safer on the roads with Killed and Seriously Injured (KSI) casualties having reduced by 43% since the 2010-2014 baseline. We continue to tackle dangerous parking on estates, deliver the Healthy Schools Streets programme ensuring our youngest residents are kept safe, and run clinics helping residents manage their parking debts.
- 1.6 Our Environmental Services support a clean public environment that everyone can enjoy. This is delivered through our contract with Veolia Environment Services. We are committed to investing in street cleansing, encouraging recycling, and supporting a circular economy. We commenced the delivery of a £1 million investment in our street cleansing service in 2024/25 to ensure Camden's environment is maintained to the high standard that our residents deserve. Other initiatives in this area include community skips, work to reduce fly-tipping, and improving public toilet provision.
- 1.7 This is the second year since I have taken over portfolio oversight of Planning to better align our principles of sustainability into planning policy and implementation. We are delivering a sustainable Camden that improves our current infrastructure and built environment through inclusive and sustainable planning policy.
- 1.8 Planning in the borough is driven by the Camden Local Plan, laying out our approach to planning through an approach that benefits our residents and responds to the climate emergency. This area of the council takes ownership of our Community Infrastructure Levy (CIL) and Section 106 agreements which means that new developments in Camden lead to social value investment for the good of our residents. Our Design and Place team shape our growth areas to ensure Camden is developing to meet the needs of our residents and bring communities together. We are committed to reducing end-to-end times on planning applications in line with national priorities to accelerate decision-making while ensuring appropriate enforcement where planning controls are breached. As well as redevelopment proposals, a number of retrofit and reuse proposals have also come forward to better use existing building stock. Our ongoing digital transformation of the planning service has made the planning system easier for residents to navigate and ensures officers have more capacity to deal with the cases that require their attention.

- 1.9 We will continue to lead locally and shape a sustainable Camden that is resilient, collaborative, and responds to the needs of all our residents.

2. Climate Emergency and Climate Action Plan

- 2.1 In 2019, Camden declared a climate and ecological emergency and resolved to do all we could to reach net carbon by 2030. 2025 will be the hottest summer on record, with four heat waves declared. Nine of the last 10 summers (2016-2025) have brought temperatures above the long-term average. This intense heat poses serious risks to public health and presents significant challenges to both our built and natural environments.
- 2.2 In addition to extreme temperatures, Camden continues to face increasing flood risk, with significant rainfall events in July 2021 and August 2022, causing widespread disruption to public spaces and homes.
- 2.3 As we continue to face the realities of a changing climate, it has become even more urgent to not only reduce greenhouse gas emissions in Camden but also to build resilience and adaptive capacity for the challenges ahead.

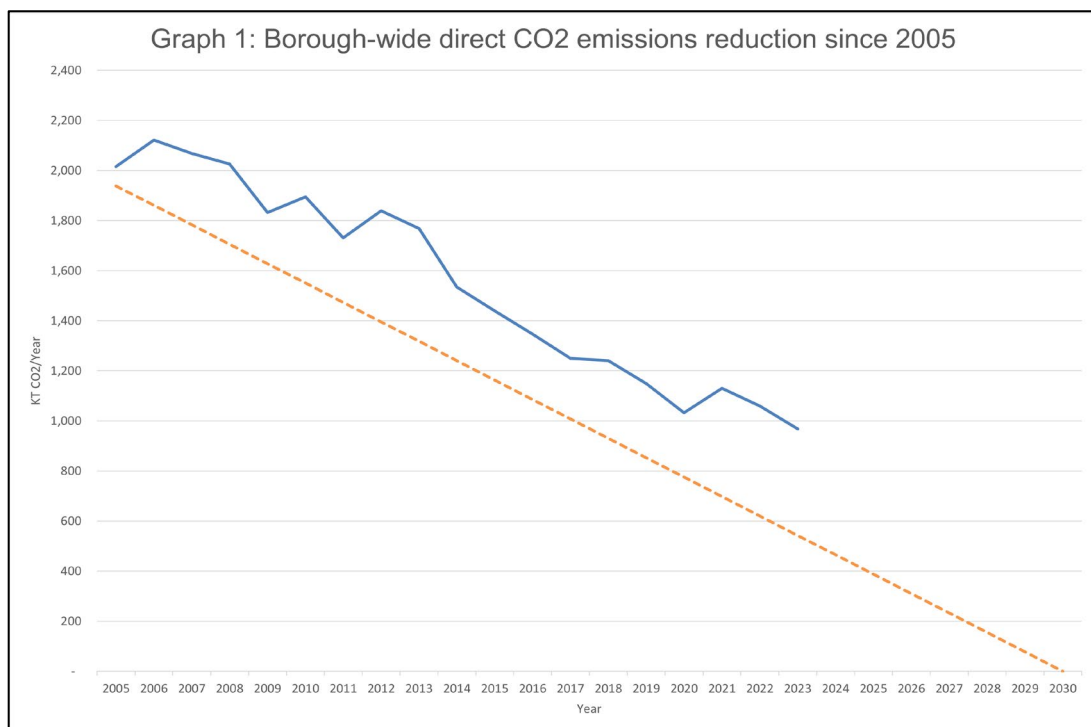
Climate Action in Camden

- 2.4 Camden's current [Climate Action Plan](#) 2020-2025 concludes this year and a new Climate Action Plan for the period 2026-2030 is due to be considered by Cabinet in December 2025. A final Annual Review of the current Climate Action Plan will also be published in the new year, with over 98% of the actions delivered.
- 2.5 2025 has seen significant work on the development of the Council's next Climate Action Plan 2026-2030. We undertook a five-month intensive engagement process to ensure citizens had the opportunity to help shape the priorities of the plan and remain at the centre of climate delivery. The engagement involved place-based activities throughout the borough, targeting those most vulnerable to and affected by the changing climate including young people, residents in flood- and heat-prone areas, and those facing economic vulnerabilities. We wanted to know how life has changed for Camden's communities in the last five years.
- 2.6 As part of this process, we held community events, convened a [Young Person's Summit](#), and trialled a new interactive immersive engagement tool developed by University College London (UCL) and Nesta – [Strategy Rooms](#). The engagement process culminated in a [Community Climate Action Day](#), where residents came together to revisit the original Citizen Assembly recommendations and generate new ideas and priorities for the latest Plan. 280 residents took part in the activities which have helped to shape the draft Climate Action Plan 2026-2030.

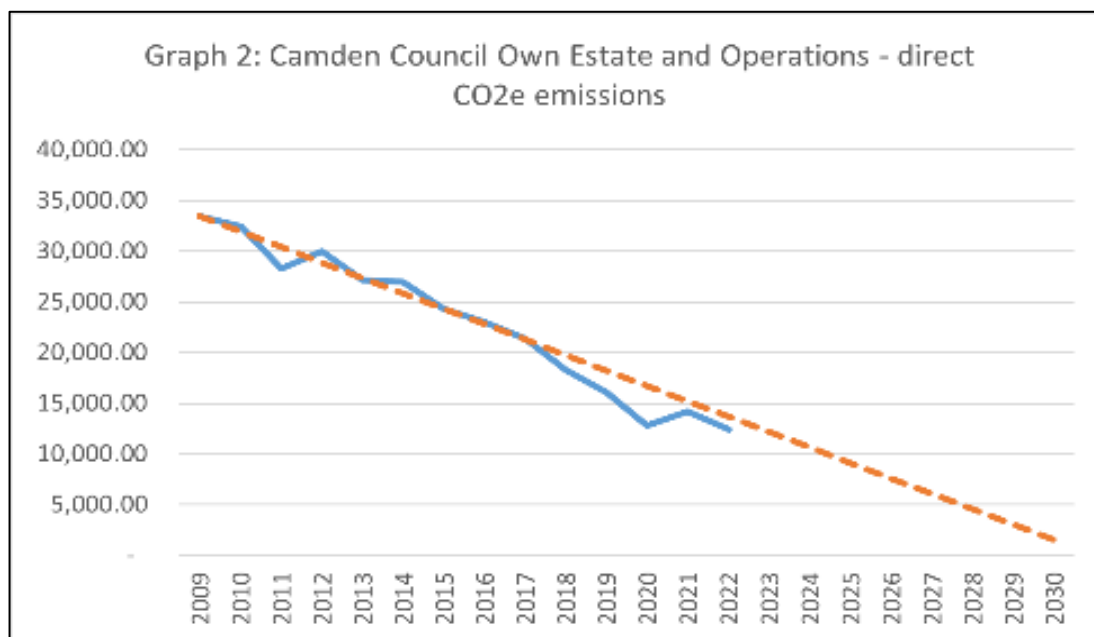
- 2.7 The current Camden Climate Action Plan 2020-2025, adopted in the summer of 2020, is organised around the themes of *People, Places, Buildings, and Organisations*. It established a framework for action across the borough to support our ambition of achieving a zero-carbon Camden by 2030. The concept of a 'framework for action' is key, as the Council only has direct influence over around one-third of Camden's CO₂ emissions. Progress therefore depends on everyone living and working in Camden playing their part, with the Council enabling and supporting residents and organisations to take climate action, while leading by example across our own estate and operations.

Climate action progress

- 2.8 The key measure of progress for our climate mitigation programme is the level of borough-wide greenhouse gas emissions (hereafter referred to as CO₂). Additionally, the Council measures its own CO₂ emissions across corporate buildings and operations on an annual basis to track organisational progress.
- 2.9 Borough-wide CO₂ emissions have decreased by 52%, while emissions from our own estate and operations (excluding Council housing) are now 64.5% lower compared to the respective baseline years of 2005 and 2010. Graphs 1 and 2 illustrate these reductions in relation to the 2030 zero-carbon trajectory.



A graph to show reduction in direct CO₂ emissions across Camden since 2005 in kilotons



A graph to show reduction in direct CO2 emissions across Camden Council's own estate and operations since 2005 in kilotons

- 2.10 Residents remain central to Climate Action Plan delivery and oversight. In response to a direct recommendation from the Citizens' Assembly, the Council established a [Camden Climate Citizen Panel](#) to help monitor the delivery of the Climate Action Plan. The first panel was recruited in 2020 and the second panel formed in April 2023. The second Citizen Panel continued its work at the start of 2025, supporting the development of the Council's climate resilience programme and shaping the approach to the draft Climate Action Plan 2026-2030 as noted above.
- 2.11 Our community led Somers Town Future Neighbourhoods programme is in its third and final year (to be completed in early 2026) and has continued to go from strength to strength. Since the launch of the Future Neighbourhood 2030 programme in 2022, £9.2M has been invested in Somers Town. This includes £3.5M from the Greater London Authority (GLA) and £5.7M match funding from partners. The following projects were delivered in 2025:
- A Climate Learning Hub providing training and support on climate, health, and finance related activities including food growing, cooking skills and repair and reuse.
 - Funding to support the Life After Hummus social supermarket which redistributes surplus food to residents. In 2025, a new community café providing surplus food based recipes opened at the Pancras Square Library

- Green space and courtyard improvements to boost climate resilience and access to food growing at Levita House
- New Green Mobility Hubs in Somers Town providing residents with a single point of entry to a range of sustainable transport offers such as e-bikes hire and electric vehicle charging points.
- New rain gardens to improve local climate resilience and reduce flood risk were installed on Phoenix Court
- A new segregated cycle lane opened to the north of Somers Town and three new Healthy School Streets providing safer streets and cleaner air for children were opened.
- A major new solar array was installed at Regent High School funded by a community share offer and delivered in partnership with Power Up North London
- Internal wall insulation was retrofitted in 40 flats
- Upcycled bicycles for residents and apprenticeships in bike mechanics were provided by Your Bike project (400 bikes upcycled & donated, 1000 bicycles maintained, and 22 teenage apprentices delivered)
- Sharing Spaces were opened in Tenants and Residents' Association halls providing room for skills and idea sharing, leading to the trialling of two food-based micro-enterprises
- A 12-week accredited course mentoring residents to develop fundable climate projects (worth 28 UCAS points) was also developed and delivered with Central St Martins and the Somers Town Community Association.

2.12 The Sharing Space concept trialled in Somers Town and tested over 2024 at the British Library, has led to a new pop up Sharing Space at the British Library which opens every second Tuesday. Looking ahead, we are now working with Think & Do in five Camden libraries to expand the Sharing Spaces offer. The new sharing space series will run until March 2026 at Pancras Square, Kentish Town, Swiss Cottage, Holborn and Highgate libraries.

2.13 In partnership with the British Library, Camden libraries have secured a £86,000 to fund a 3-year programme providing a literacy and information point where residents can access trusted information and resources to help inform action in response to the climate crisis. The programme will help to tackle disinformation about climate science.

2.14 The Council also continues to support the Library of Things services in Kentish Town and Kilburn libraries. Over 2024-25, the two Library of Things prevented 18 tonnes of waste and saved 49.5 tonnes of carbon. In September 2025, the Kilburn Library of Things was relocated to Swiss Cottage Library which has the largest catchment of residents and is still accessible to Kilburn residents.

2.15 In 2024-25, we awarded £44,806 in funding across five projects through the Camden Climate Fund to voluntary and community sector organisations supporting community projects aimed at tackling the climate crisis. The fund supported the relocation of the Library of Things to Swiss Cottage Library noted above, and campaigns promoting energy-saving behaviour and the

uptake of retrofit. Among the funded projects was the Energy Saving Ambassadors Programme, which delivered training and advice to residents on how to use less energy and reduce their bills

- 2.16 The Camden Climate Fund also focused on building retrofit, awarding £23,425 to three businesses and community organisations to improve workplace energy efficiency. A further £99,000 was awarded to households to improve the energy efficiency of homes. The Camden Climate Fund is financed by contributions from developers in Camden.
- 2.17 2025 also saw the launch of our new Greener Camden webpages, which bring all of Camden's environmental offers for residents under a single easy to access platform on the Council website: [Greener Camden - Camden Council](#)
- 2.18 To help improve the borough's resilience to flood risk, the Council has worked closely with the South End Greening Group, residents who came together to address flooding issues in the area following the 2021 and 2022 floods. This collaboration has resulted in several flood risk mitigation projects including the Parliament Hill Sustainable Urban Drainage rain gardens and the significant expansion of gully capacity near Hampstead Heath Overground station.
- 2.19 In the spring of 2025, the Council also partnered with the City of London Corporation to install new natural flood management features on Hampstead Heath to further slow run-off towards South End Green. The Council also reviewed and consented to further watercourse improvements on Hampstead Heath that are also designed to reduce rainwater flows.
- 2.20 We have worked with South Hampstead Flood Action Group (SHFAG) to successfully bid for grant funding to deliver a Sustainable Urban Drainage systems (SuDS) scheme on Goldhurst Terrace. Phase 1 of the scheme was completed in 2024 and included construction of SuDS and planting new street trees. In 2025, we secured a further £75,000 from the Environment Agency PROSPER Fund to finance Phase 2 of the project. This will deliver nine new street trees with attenuation pits and new raingardens in the high flood risk area of South Hampstead. Phase 2 is now under construction and due to complete in 2026.
- 2.21 Camden has also expanded its Ecopoints offer that rewards residents with 'Green Points' for sustainable actions such as improved recycling and sustainable travel. In early 2025, the platform expanded to provide subsidised water butts to help manage surface water flood risk. The EcoPoints reward scheme contract was renewed for a further six years in August 2024 and was expanded to reward climate mitigation, adaptation and resilience actions. Engagement remains high, with 16,343 residents signed up by 31 March 2025. EcoPoints gained national recognition, winning the Climate Action Award at Keep Britain Tidy's Network Conference and Awards in January 2025.

- 2.22 We launched the 'Stay Cool' community-focused campaign over the summer of 2025 to raise awareness around extreme heat. The campaign targeted people considered to be most at risk from extreme heat, providing practical advice and resources to keep cool. Eight events took place across Camden over the summer, reaching people with learning disabilities, children and their parents/carers, and rough sleepers.
- 2.23 Camden has also expanded its network of "Cool Spaces" providing accessible spaces with air conditioning, free water, and a safe environment to rest during extreme heat. In 2025, the number of Cool Spaces across Camden increased from 2 to 16 (with 10 meeting the Greater London Authority (GLA) requirements). Cool Spaces in Camden that meet the GLA requirements include Pancras Square Library, Swiss Cottage Library, Queens Crescent Library, Somers Town Living Centre, Somers Town Community Centre, Old Diorama Arts Centre, Building Centre, the Wellcome Collection, Emmanuel Church and the British Library. Other Cool Spaces include Camden Town Library, Kentish Town Library, Highgate Library, West Hampstead Library, Kilburn Library and St Mary's Church.
- 2.24 The Council has also produced a new Adverse Weather Plan which was operationalised before the summer of 2025. The plan identifies services at risk across the Council and nominates service level leads who receive weather warnings from the Borough Emergency Command Centre and are responsible for implementing service level responses. For example, if major rainfall is forecast, the Engineering and Environment services leads will send teams out to clear gullies in known flood risk locations.
- 2.25 The Holborn Liveable Neighbourhood (HLN) is a major streets and public realm transformation project for this key area of Camden. Shade the UK were appointed to develop a heat resilience strategy for the area, given that heat is the main climate risk in Holborn. This involved building a 3D model of the area, running a heat exposure analysis to identify areas that would benefit from interventions to manage extreme heat. Heat risk solutions for the Tybald's Estate, the British Museum and Great Russel Street, and Theobald's Road, are being taken forward from the study and work is underway to incorporate them into Council programmes. Following the report, engagement has taken place with residents on the Tybald's estate to co-design landscape greening and shading for the estate. The Shade the UK recommendations are also being built into the procurement process for the main Holborn design work.
- 2.26 To help drive more sustainable consumption patterns, the Camden Fixing Factory on Queen's Crescent continues to save money for local residents, build community spirit, and reduce waste. Supported by 35 volunteers, the Fixing Factory delivers weekly free repair sessions, 'Fixperience' repair workshops for beginners, skills and training development, and refurbished item sales rescued from recycling. In June 2025, the Camden Fixing Factory helped local residents save over £2,500 by repairing items that would have otherwise needed to be replaced. 10 volunteers went on to gain paid work in the repair industry. The Fixing Factory was featured on ITV News, the Guardian and in a new permanent gallery at the Natural History Museum. In

the past year, the Camden Fixing Factory has diverted over 550kg of electronic waste from the waste stream, saving an estimated 8,000 kg of CO2. The Council's upcoming Climate Action Plan commits to long term support of community-led circular economy projects like Fixing Factories.

- 2.27 The Council has also continued to drive emissions reductions across its estate. Camden's housing stock contributes around 8% of the borough's total carbon emissions. We have identified a £706 million investment needed to retrofit Council-owned homes. In response, we launched a comprehensive retrofit programme, supported by Wave 1 of the Government's Social Housing Decarbonisation Fund. The programme began with two pilot projects at Belsize Grove and Brooks Court, where 86 homes were successfully upgraded to at least an Energy Performance Certificate (EPC) rating of C. The Belsize Grove retrofit included the successful installation of external wall insulation and solar in a conservation area.
- 2.28 A further 72 homes are also undergoing retrofit improvements supported by Wave 2.1 of the Social Housing Decarbonisation as part of our ongoing commitment to energy security. This is in addition to 14 homes that have already been retrofitted as part of the Council's cost of living initiative supporting tenants most vulnerable to rising energy costs, with a further 3 homes currently undergoing works. In early 2025, central government confirmed Camden Council's successful £78 million consortium bid under Wave 3 of the Social Housing Decarbonisation Fund, which was submitted on behalf of over 25 London boroughs and partners. Of this, £13 million will be allocated to Camden to offset the Council's contribution to the Retrofit at Scale programme. Works are scheduled to begin in Q4 2025 / Q1 2026 and finish in 2028.
- 2.29 In late 2024, Cabinet approved the procurement strategy for our 'Retrofit at Scale' initiative which involves partnering with an institutional investor. This innovative delivery model will test and refine scalable approaches to decarbonisation across more than 2,500 homes, by initially installing solar panels and battery systems to lower energy costs while cutting emissions.
- 2.30 Henderson Court, a sheltered housing scheme, saw the installation of a large solar array, providing direct power to residents and delivering reductions in both energy bills and carbon emissions.
- 2.31 The Somers Town Energy district energy network now serves over 550 homes, a school, community facilities, Brill Place Tower, and the Francis Crick Institute. In 2024, we connected Somers Town Energy to additional housing in the area developed under the Council's Community Investment Programme. 2025 saw further technical work completed to establish a new connection to the Cooper's Lane estate.
- 2.32 Recent energy efficiency upgrades to communal heating systems have been completed at West End Lane Hostel, Rothay Court and Holly Lodge Estates, with major investment also planned at Maiden Lane and Rowley Way, subject to tender returns. The Council has secured an additional £5.5 million

through the Heat Network Efficiency Scheme and the Green Heat Network Fund to support planned upgrades to secondary distribution systems at Mayford, Spedan Close, Lymington Road, Denton, St Silas, and Coopers Lane. A further £100m has been allocated by the Council to support energy efficiency related improvements for housing over the next five years.

- 2.33 Our corporate and schools' estate accounts for approximately 1.2% of Camden's total emissions and is primarily under Council control. Enhancing the energy efficiency of these buildings not only supports our climate goals but also delivers significant financial savings. Building on the success of the Carbon Management Plan, which has achieved a 64.5% reduction in CO₂ emissions, we have developed a new seven-year programme. This plan outlines the need for an estimated investment of £55-£69 million for our corporate estate and £115 million for our schools' estate to transition both to zero carbon by 2030.
- 2.34 The Council's approach to investment across our corporate estate combines available national grant funding through the Public Sector Decarbonisation Scheme (PSDS) with the necessary match funding (typically covering 60-70% of the cost), secured through Council investment.
- 2.35 This approach was successfully tested with the £3.7m retrofit of Swiss Cottage Library, funded in part by £1.4m of secured PSDS funding. Analysis of energy consumption at the property has shown a 36% reduction post works. In November 2024, significant energy efficiency improvements were completed at Highgate Library. Over 2025, further energy efficiency retrofits have been completed at West Hampstead Library, Netherwood Day Centre and the Waterlow Park Centre. In addition, a project to install air source heat pumps at Talacre Leisure Centre is now on site and another decarbonisation project at the Spectrum Centre is currently procuring contractors to complete the works.
- 2.36 In 2025, a further £6m was secured to deliver major energy efficiency improvements to Swiss Cottage and Kentish Town leisure centres. These two projects are now out for tender and will be completed by 2027.
- 2.37 A similar funding strategy has been followed for Camden schools, with a combination of PSDS and GLA grants and match funding from internal budgets. Since the school retrofit programme started in 2022, the council has been awarded £3.5m in grant funding. Over the last year, we have delivered upgrades at Hampstead School and Brookfield Primary, with both sites receiving new double glazed windows, LED lighting and solar energy, heat pumps (Hampstead) and solid wall insulation (Brookfield).
- 2.38 In addition, we received funding from the GLA Greener Schools programme to deliver LED upgrades and solar PV at Torriano Primary and Agar children centre, with Regent High School also receiving LED upgrades. These projects are now at procurement stage.

- 2.39 2025 has also seen the Council continue to drive forward its community energy programme after a successful pilot stage with Power Up North London. This has seen solar arrays, financed by community share investment, installed at Hampstead, Parliament Hill, Regent High schools and Talacre Leisure Centre. Over 2025, a further six schools have been identified for community energy projects and a community energy partner is now in the process of being procured with a view to the new programme starting in 2026.
- 2.40 We have been transparent about the scale of the challenge ahead, publishing our second Climate Budget as part of our 2025/26 Council Tax setting report. The Climate Budget outlines the cost of decarbonising the Council's estate, the availability of funding, and the financial gap we need to address, which currently stands at over £198 million. Our third Climate Budget will be published in February-March 2026.
- 2.41 The Council also continues to ensure that the climate impact of new development is minimised. From August 2024 to July 2025, we provided written consultation responses on air quality, energy, and sustainability for 49 major planning applications. Additionally, we offered advice at 353 Sustainability Surgery sessions to help ensure the best environmental outcomes for new developments. This work has helped reduce carbon emissions by incorporating renewable energy, mitigating the risk of overheating, considering the whole life carbon of developments (particularly where substantial demolition is proposed), and supporting the circular economy through 95% reuse, recycling, or recovery of waste during construction. We have also ensured that all developments are air quality neutral. To further support these efforts, training about retrofit planning guidelines was provided to the Planning Committee - Policy and Performance meeting.
- 2.42 The commercial sector, including universities and hospitals, is responsible for 58% of Camden's direct emissions. During 2024-25, the Camden Climate Alliance (CCA) continued to deliver two core programmes aimed at reducing emissions from commercial buildings and fostering local climate action in collaboration with community groups: the Camden and Brent Business Climate Challenge (CBBCC) and the fourth phase of Climate Connectors.
- 2.43 The CBBCC is a £640,789 UKSPF-funded programme launched in December 2023 supporting businesses across Camden, Brent, and Westminster to reduce their energy consumption and cut carbon. This builds on the success of the Mayor of London's Business Climate Challenge (BCC) in 2022. By the conclusion of the programme in April 2025, the CBBCC had delivered 86 energy audit and recommendation reports, six training sessions, and two celebration events in Camden to recognise and celebrate all of those who have taken part. Across both phases, 132 businesses have now benefited from the programme.
- 2.44 In early 2025, project partners at WSP and Turner & Townsend delivered social value commitments to leverage their energy efficiency expertise and

support other initiatives beyond the programme. This included four mini energy audits and workshops for primary schools in Camden, as well as the delivery of a Climate Risk Tool for the Council's asset owners. The school audits were well-received, with some participating schools re-engaging the Council to identify support for implementing the recommended measures.

- 2.45 In April 2025, we delivered an interim evaluation report on the CBBC programme. This report focused on assessing progress amongst the 17 businesses who received their evaluation reports in the earlier phases of the programme (before October 2024). The report compared data from October 2024 – February 2025 with the same period the previous year. The report showed that although this cohort saw reductions in both electricity and gas consumption, actual carbon savings achieved were relatively small (38 tCO₂e, with a potential lifetime reduction of 400 tCO₂e). This highlights significant opportunities for further action, and that 5-9 months is insufficient for businesses to implement all recommended changes.
- 2.46 The CCA continues to support businesses to access funding through the Camden Climate Fund with five BCC businesses now having received funding for actions outlined in their energy audits. In August, we also delivered a targeted session to help businesses understand the funding process and encourage them to submit applications.
- 2.47 Due to underspend in the programme, additional training will be provided to businesses on understanding their carbon footprint, building on the prior trainings and enabling participation in other CCA programmes, such as the Carbon Certification scheme. A full evaluation will take place in early 2026, using two years of energy data (2024 – 2025) to understand the long-term impacts and provide recommendations for future business support programmes.
- 2.48 In late 2024, the CCA also delivered Phase 4 of the Climate Connectors programme, one of the CCA's key initiatives designed to connect businesses with the wider community and provide opportunities to fund, co-design and support local projects. Phase 4 included several activities: a Green Dragons' Den event, where eight Camden primary schools pitched for funding for climate projects supported by £3,200 from CCA businesses; a Green Skills event in March 2025 showcasing careers in green skills; and corporate volunteering projects, including creating a blue space at Camden School for Girls and laying wildflower turf across Camden's estates. Since launching in 2022, the Climate Connectors programme has generated over 36,000 in business donations, and over 1181 hours of corporate volunteering.
- 2.49 In the absence of external funding, harnessing social value businesses and facilitating knowledge transfer will be crucial to continue supporting businesses with the knowledge and funding to act on the climate crisis. Phase 5 of the Climate Connectors programme will help to deliver on this ambition. Key features of this next phase include supporting projects that align with the themes outlined in the new Climate Action Plan, expanding value transfer beyond monetary contributions to include pro-bono advice,

equipment and other resources and introducing a careers focus to use the CCA as a platform for promoting sustainability careers and green skills.

3. Air Quality

- 3.1 Camden Council remains committed to ensuring that no one in the borough experiences poor health due to the air they breathe. As the first local authority to adopt the World Health Organization's (WHO) updated air quality guidelines, Camden leads by example to improve air quality while actively advocating for stronger national legislation and greater ambition across the UK.
- 3.2 The Council is now halfway through the implementation of the Camden Clean Air Action Plan 2023-2026, which sets out an ambitious roadmap for improving air quality across the borough. The plan focuses on tackling local sources of nitrogen dioxide (NO₂) and particulate matter (PM), increasing public awareness, and advocating for stronger national policies to address pollution beyond Camden's boundaries.
- 3.3 Additionally, Camden has continued to expand its air quality monitoring efforts, building on the launch of the updated [online data portal](#) last year to improve access to real-time information.

Performance on Outdoor Pollution Levels

- 3.4 From 2023 to 2024, the average NO₂ levels across all automatic monitoring sites in Camden decreased by 7%. In 2024, the 40µg/m³ (grams per cubic metre of air) annual legal NO₂ limit was exceeded at only five out of 353 diffusion tube monitoring sites with valid data (which includes 289 sites managed by Camden and 64 managed by HS2). This is a marked improvement compared to 2019 where 96 out of 214 sites exceeded the legal limit.
- 3.5 The Council has set interim air quality targets for 2026 and 2030 to monitor progress toward achieving the WHO 2034 standards, which are stricter than those currently set by the UK government. As part of this journey, Camden reports that 308 (87%) of the 353 diffusion tube monitoring sites met the 2026 target of 30µg/m³ for NO₂, and 131 (37%) sites achieved the 2030 target of 20µg/m³. This is a considerable improvement compared to 2023, when 70% of sites met the 2026 target and only 10% met the 2030 target.
- 3.6 The second key type of air pollution measured is fine particulate matter (PM_{2.5}). This pollutant decreased from 2023 to 2024 at one automatic monitoring site in Camden and remained stable at three other sites. Despite the ongoing challenge of addressing national PM_{2.5} emissions, all four of Camden's automatic monitoring sites met the council's 2030 interim target of 10µg/m³ in 2023.
- 3.7 The ultimate goal is to meet the WHO guideline of 5µg/m³ by 2034. Achieving this will require sustained efforts on multiple fronts—tackling local

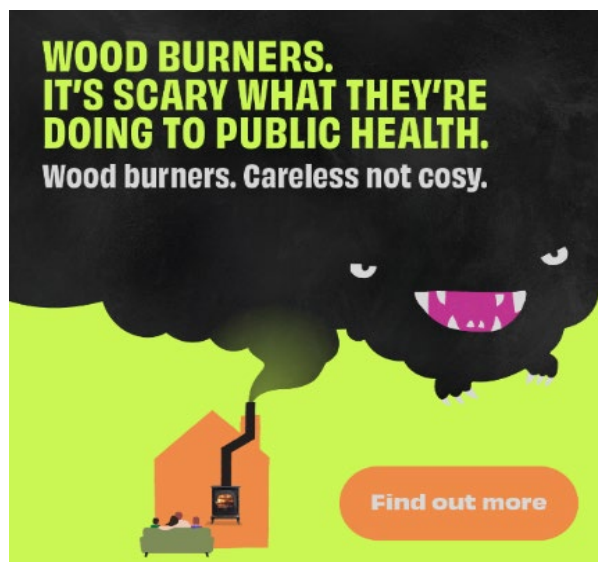
emissions, leading by example, and advocating for national and international action to transition to cleaner transport, industry, agriculture, and buildings.

Behaviour Change and Projects

- 3.8 Camden's air quality programme includes several grant-funded projects to support the implementation of the Clean Air Action Plan (CAAP).
- 3.9 From spring 2024 to summer 2025 the Council has delivered the 'Year of Clean Air for Camden Schools'; a school air quality engagement project with funding from the Department for Environment, Food and Rural Affairs (DEFRA). The project involved assemblies, workshops, and bespoke engagement events. This included novel air quality educational activities such as the use of a dolls' house and a small air quality sensor to illustrate the importance of indoor air quality at home.
- 3.10 By collaborating extensively with other Council teams and seven external organisations, all led by a shared purpose for air quality-health education, the Year of Clean Air for Camden Schools ultimately delivered 58 assemblies, workshops, and events across 30 schools with the involvement of 5,200 pupils.
- 3.11 Concurrently, a new Section 106 carbon offset allocation scheme has been created to capitalise on the success of the Year of Clean Air for Camden Schools. The scheme will allow the financing of further interventions to reduce air pollution exposure in school environments, including small capital projects to reduce pollutant emissions from sources including on-site catering.
- 3.12 In 2024, Camden secured £416,000 in grant funding from the Mayor of London's Air Quality Fund (MAQF) for five projects, including three consortium projects involving other London boroughs.
- 3.13 Camden and Hounslow are leading a fourth phase of the highly successful MAQF-funded 'Idling Action London' project, which will focus on supporting businesses and fleet operators to reduce staff engine idling whilst relaunching the successful 'Engine Off, Every Stop' public awareness campaign.
- 3.14 The first phase of the renewed 'Engine Off, Every Stop' campaign ran from December 2024 to March 2025 featuring outdoor visuals, online imagery, and radio messaging. This achieved an estimated 60 million impacts and impressions across all formats and campaign media. A second phase will start in November 2025 alongside the commencement of business engagement.
- 3.15 Camden and Islington are leading a second phase of the 'London Wood Burning Project' (LWBP) with MAQF funding. This phase builds on the DEFRA-funded first phase which revealed a low level of public awareness

about air pollution from solid fuel burning, despite the huge impact that this pollution has on London's health and economy.

- 3.16 The second phase of the LWBP resumes the 'Burny' public awareness campaign with targeted display network and search network advertising. The 22 participating boroughs will also be supported to implement more effective regulatory controls for enforcing the smoke control area rules that prohibit smoke from domestic and commercial buildings.



Imagery from the 'Burny' public awareness campaign

- 3.17 Camden, Hackney, and Newham are jointly leading an MAQF-funded project to raise awareness of air pollution within London's boating community with 11 other boroughs also participating. The first stage of the 'Healthy Waterways London' project involved a specialist consultancy undertaking a detailed survey of canal boaters in London. This highlighted the lack of support and options available for live-aboard boaters to move away from solid-fuel heating and diesel engines.
- 3.18 The next stage of Healthy Waterways London will involve co-creating an air quality awareness campaign with members of London's boating community, focusing on the simple actions that can be taken to reduce emissions and exposure to air pollution. Following this, Camden will lead the creation of a Healthy Waterways strategy to set out a framework for future action.
- 3.19 Camden is one of only a small number of local authorities to have installed electrical power supplies for canal boats along the canal towpath, through our 'Camden Electric Moorings' project. These are available for boaters using the visitor mooring area between Camley Street and St. Pancras Way, with no requirement for pre-booking. On behalf of Healthy Waterways London, Camden has also submitted an application for funding from the Mayor of London's Green Roots to establish a micro-grant scheme providing financial support for live-aboard boaters seeking to reduce emissions from their boats.

- 3.20 Camden has secured MAQF funding for a project aimed at reducing air pollution from filming in the borough. On-location filming heavily relies on diesel generators to power lighting, welfare facilities, and other equipment. The 'Cleaner Filming for Camden' project is being delivered in collaboration with FilmFixer. This will include audits of film sets, enhanced data collection, and raising awareness within the film industry about the importance and opportunities for reducing air pollution.
- 3.21 Finally, Camden also received MAQF funding for a community awareness project titled 'Clean Air for Camden – Citizen Science and Community Air Quality Champions'. This initiative seeks to build local knowledge about air quality and health, supporting community-led administration of the Council's popular indoor air quality sensor loan project. Additionally, the Clean Air for Camden project will explore new partnerships with primary care and social care services in Camden to ensure healthcare professionals, as trusted messengers, are sharing important information about how better air quality can support health and wellbeing.

Indoor Air Quality

- 3.22 Although the statutory duty for local authorities is limited to outdoor air quality, Camden has surpassed this requirement by including measures to improve indoor air quality in the CAAP. We typically spend 80-90% of our time indoors, however research has found that indoor environments can have very poor air quality that damages human health. Poor air quality has disproportionate impact upon low-income households, vulnerable individuals and minoritised communities.
- 3.23 In 2025, we have expanded the capacity of our indoor air quality monitor loan scheme to reduce waiting times for residents. During 2024/25, 14 Camden residents borrowed a sensor and a further 49 were placed on the waiting list. Three-quarters of loanees completing the follow-up survey indicated that they know what actions they can take to reduce the air pollution they breathe, compared to half before the monitor loan.
- 3.24 In February 2025, the London School of Economics published a research paper arising from the Camden-supported 'Camden Household Air Monitoring Project' (CHAMP). The research involved 258 Camden households and found that levels of fine particulate matter air pollution (PM_{2.5}) were higher indoors during evening occupancy times compared to the air outside, and that pollution levels were typically higher in lower-income households.
- 3.25 The researchers found that indoor air quality sensors helped occupants reduce indoor PM air pollution by 17% overall, with the largest improvement measured in lower-income households. The enhancement to indoor air quality was primarily achieved through improved ventilation.
- 3.26 Building on the interest in the monitor loan scheme and the evolving evidence about indoor air pollution and health inequalities, the Council will

launch a new three-year indoor air quality programme early in 2026. This will further expand the indoor monitor loan scheme whilst establishing partnerships with local NHS and wellbeing services (including asthma nursing and the Breathe Stop Smoking service). In-house data analysis will prioritise support for vulnerable households, for example those containing children diagnosed with asthma. The programme will introduce monitoring and feedback to measure whether reduced indoor air pollution leads to reduced symptoms and usage of medication.

- 3.27 In February 2025, the Royal College of Paediatrics and Child Health (RCPCH) published a suite of resources supporting health professionals to communicate the importance of air pollution on health to their patients. The free '*Talking to patients about air pollution*' course is a series of short simulated exchanges between clinicians and patients in different settings, through which the clinicians sensitively introduce the topic of air quality and make appropriate and actionable recommendations for how their patient could reduce their exposure to air pollution. The course forms part of the RCPCH's 'Air Pollution Companion' toolkit and is the culmination of an extensive collaboration between RCPCH, Camden Council and Great Ormond Street Hospital.

Camden Breathing Better Campaign

- 3.28 On Clean Air Day 2025 (19 June), Camden Council officially became a signatory to the Camden Breathing Better Charter. The Charter is a framework of 12 commitments across four themes to support employers and institutions taking meaningful action to reduce air pollution from business-related activities and protect the health of employees and the public.
- 3.29 The Council has already taken strong action towards many of the Charter commitments through the air quality and climate programmes. We are firmly committed to further effort across all areas to achieve the WHO-aligned air quality targets and realise the community vision for a borough with cleaner air for everyone.
- 3.30 By signing up to the Breathing Better Charter, the Council has joined a growing network of more than 20 organisations with a collective workforce of 32,000 Camden-based employees. Over the coming years, we will collaborate with this new partnership to draw on our collective expertise and experience, helping to drive positive environmental and public health change within the commercial sector.

Monitoring and Public Air Quality Data

- 3.31 By the end of 2024, Camden's diffusion tube NO₂ monitoring network expanded to include 321 sites. This marks a 125% increase compared to January 2019, before the launch of the first Clean Air Action Plan 2019-2022. This ongoing expansion reflects our commitment to raising awareness

about the public health impacts of air pollution on our communities, as well as our evidence-based approach to project and policy development. Additionally, HS2 Ltd. operates 64 diffusion tube monitoring sites in Camden. The data collected from these sites is also published and contributes to improving our assessment of air quality across the borough.

- 3.32 Throughout 2024, we continued to operate our reference-standard automatic air quality monitoring network, which includes five sites. NO₂ is measured at four sites, and PM_{2.5} is monitored at four sites. Three of these monitoring sites - Euston Road, Russell Square (Bloomsbury), and Swiss Cottage (Finchley Road) – measure both NO₂ and PM_{2.5}.
- 3.33 In June 2025, the Council started work onsite to establish a new reference-standard automatic air quality monitor on Kilburn High Road, which the Council's diffusion tube monitoring had identified as one of the most polluted roads in the borough. The new monitoring site will measure NO₂, PM_{2.5} and ozone, becoming only the second ozone monitoring site in Camden (with Bloomsbury being the other one).
- 3.34 The addition of an ozone monitor is representative of Camden's forward-thinking approach to air quality management in the context of a changing climate. Increasingly regular summer heatwaves are expected to lead to more frequent summer ozone air pollution episodes, and an expanded monitoring capacity will enable the Council to provide proactive and reactive public health advice for people with existing health vulnerabilities.

4. Greenspaces

Parks for Health

- 4.1 Parks and green spaces are vital to our communities, and our Parks for Health Programme has demonstrated their value, showing that each visit provides £7 in physical health benefits and £13 in mental health benefits. This is equivalent to an £11.58 return on investment for every pound spent.
- 4.2 To ensure our parks and green spaces continue to serve as health assets, we have partnered with Voluntary Action Camden and internal teams to promote green social prescribing. We also support local groups in organising activities that encourage people to use parks for improving their health.
- 4.3 We were pleased to host and support community led activities in our parks over the summer including "Make, Do Play" in St Gile's Churchyard, Third Age Project's intergenerational project in Cumberland Market, and the opening of a new community garden at Maygrove Peace Park. The wellbeing walks around Bloomsbury parks, which began during the pandemic, have increased in popularity with over 35 walks delivered this year alone.



Cumberland Market



St Giles Churchyard

- 4.4 We continue to draw up plans and engage the community around a Padel court in Cantelowes Gardens, ensuring that we're considering views across various groups and users in decision making.
- 4.5 We are exploring new approaches to community engagement that ensure our parks remain inclusive, welcoming, and healthy. A variety of community-led activities help bring Camden's parks to life, including gardening activities at 20 of our 75 parks, walks between sites (such as the popular Bloomsbury wellbeing walks), and community events hosted by Friends Groups and local organisations and businesses.



"Peace Day" at Maygrove Peace Park

Working with Communities

- 4.6 Camden has around 20 Friends of Parks Groups. In response to insights from the Parks for Health programme, we are encouraging these groups to strengthen their memberships, attract new and diverse volunteers, and connect with other local community organisations. Friends of Oakley Square and Friends of Crabtree Fields held their first public events this year, complimenting the more established groups such as Waterlow, St George's Gardens, and Fortune Green who provided a range of successful events.

4.7 These groups funded and organised a range of events throughout the year including:

- St George's Gardens Summer Party
- Waterlow Park Summer Concerts
- Fortune Green film screening and birds of prey display
- Volunteer gardening and community litter picks



Waterlow Park butterfly walk and concerts

4.8 We have continued our efforts to promote parks as health assets by developing communications for Mental Health Awareness Week, Love Parks Week, the City Nature Challenge, Camden in Bloom, and National Tree Week.



Social media posts encouraging residents to engage with their local parks

Food Growing

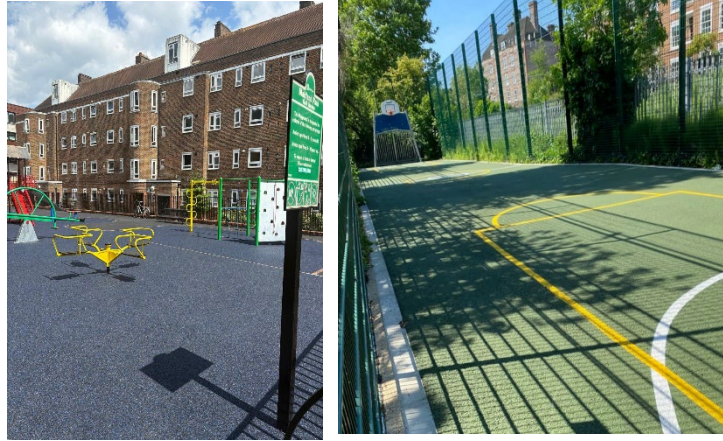
- 4.9 Ensuring that communities have access to sustainable fresh food is central to our food mission and finding space for this activity is a priority for us. In 2024, we appointed a dedicated officer in our green space team to connect communities and promote best practices for food growing across the borough.
- 4.10 Activities undertaken include:
- Mapping Food growing spaces across Camden (over 50 identified) and mapping potential spaces across our Estates and Parks
 - Creating a state of food growing report that outline the successes, barriers and challenges to food growing in Camden
 - Carrying out a mapping and resident engagement project in the Kentish Town West Area to identify new food growing opportunities
 - Delivering a new food growing space in Mill Lane Open Space
 - Working on two new food growing spaces on our Estates (Westcroft Estate and St Silas Estate). We are testing new processes in the delivery of these projects, including new resident engagements processes and co-design of spaces
 - Supporting existing projects by providing access to water
 - Delivering two food growers' events:
 - Food Growers Event (Castlehaven, Nov 2024)
 - Food Growers Community Event (London Zoo, February 2025)
 - Setting up food growers' network with main food growing organisations in Camden on the back of these events
 - Installing and setting up a seed bank at Camden Town Library
 - Delivering a programme of food growing support to schools
 - Updating the allotment waiting list and carried out survey
 - Exploring the potential for implementation of Right to Grow in collaboration with the food and estates mission

Managing and Maintaining Safe and Sustainable Spaces

- 4.11 We have continued our efforts to promote parks as health assets by developing communications for Mental Health Awareness Week, Love Parks Week, the City Nature Challenge, Camden in Bloom, and National Tree Week. Camden and its term grounds maintenance contractor idverde have continued to maintain over 250 public playgrounds across the borough throughout the year. The annual play inspection ensures that all the playgrounds are safe and that reporting and monitoring is in line with the required standards.

Playgrounds

- 4.12 Playground refurbishments and asset replacements have continued throughout the year. Over £500k has been invested across 40 sites. This includes safety surfaces, individual assets and ball courts.



Maitland Park & Ingestre refurbished play areas

Water Features

- 4.13 In addition to formal playground maintenance, Camden maintains 4 interactive water play features. These are located at Russell Square, Swiss Cottage, Kilburn and Waterlow Park. New control panels were installed at both Swiss Cottage and Russell Square. Russell Square operated for most of the summer and now benefits from an online control system, allowing remote operation when needed.
- 4.14 The interactive water play features are inspected daily by idverde Park Keepers, and weekly by idverde trained play inspectors. The weekly inspections ensure that the bromine and temperature of the water is correct and safe while monthly maintenance inspections are undertaken by a specialist external contractor. Ad-hoc works and inspections are undertaken by Camden's operations officers.



Russell Square fountain

Pitch refurbishment

- 4.15 The Peckwater pitch marks the first in Camden to be refurbished by Arsenal and adidas as part of the No More Red campaign to tackle the root causes of youth violence and provide safe spaces and more opportunities for young people. Thanks to generous funding from Arsenal, adidas, and the Kentish Town District Management Committee, the refurbished pitch continues to be a safe space where residents can be active, connect and have fun.



Peckwater pitch refurbishment

Outdoor Gyms

- 4.16 New outdoor gym equipment and safety surfacing was installed at Purchase Street Open Space in 2025 and a reimagined outdoor gym offer was installed at Polygon Road Open Space. Maygrove Peace Park and Argyle Square Gardens will undergo site refurbishment in 2026. All gyms in Camden's parks have been well-maintained and remain open for use year-round.

Heritage Works

- 4.17 The Hardy Tree memorial located in St Pancras Old church is a beloved local feature and has recently undergone conservation works. These works included stabilising the structure and laying a stone chip to suppress weeds to help protect it over the long term.



St Pancras Gardens

Biodiversity and Climate-led Operations

- 4.18 In addition to adopting a conservation and biodiversity-led approach to our green space operations wherever possible, the operations team ensures that access to nature is provided and maintained. The photo below shows the reinstated decking around the top pond at Waterlow Park. The decking allows visitors to immerse themselves in the vegetation while watching the pond life. Schools use the decking for safe supervised pond dipping.



Waterlow Park pond decking

Grounds Maintenance Contract Renewal

- 4.19 As part of the ongoing work developing the new Grounds Maintenance and Play service, we have created a new contract that builds and improves on the successes of our previous agreement. The main elements of the service will continue to be delivered, including grass, shrub, hedge, and other planting maintenance, as well as playground maintenance, cleaning and inspections.
- 4.20 As part of the new service arrangements, we have been working on establishing a new in-house neighbourhood gardening team consisting of Neighbourhood Gardeners and Green Space Infrastructure Officers. The team will work with teams across the Council and with our grounds maintenance contractor to improve green spaces, including planting, supporting community groups, and maintaining garden assets. We expect this team to be operational from the start of the new contract in April 2026.
- 4.21 Balancing the management of safe, clean sites that serve as amenities for everyone, while also supporting areas where biodiversity can thrive, is a complex task. This must be achieved within the limits of resource sustainability and budget constraints. Considerable effort has been made to meet these objectives. We believe the final service delivery model will ensure the continued provision of safe, clean, and welcoming green spaces, with a focus on biodiversity and the health and wellbeing of our community.

Park Locking

- 4.22 Over the summer we trialled moving the park locking responsibility from our external Grounds Maintenance contract to our internal Community Safety Team. The reasons for this include:
- Community Safety Officers are well-equipped to deal with and disperse anti-social behaviour (ASB) and crime, and are better connected with the police for more serious incidents.
 - Additional officers for this task enhance overall community presence across the borough (e.g. at other times of day and locations).

The outcome has been positive as Community Safety Officers have been more effective in managing ASB, and body-worn camera footage has been useful in identifying and handling more serious incidents as well as assisting in addressing environmental crime issues in and around the park and Open Space areas.

Tree Management

- 4.23 Camden Council manages 29,000 trees, with an additional 10,000 to 15,000 trees located in woodland sites. Tree canopy cover in the borough has

increased from 22.9% in 2019 to 24.6%, exceeding the Urban Forestry & Woodland Advisory Committee Network's recommended level for inland towns and cities by 4.6%. This shows the council's approach to tree management is having a positive impact on canopy cover and the benefits it provides to our residents.

- 4.24 The service publishes information about the trees we maintain on the Council's open data portal. Specific maps are also available for [newly planted trees](#) and those [scheduled for removal](#). A new map was published this year showing where there are trees in the borough with [good autumn leaf colour](#). This is to encourage residents to visit our parks and open spaces, improving their health and wellbeing.
- 4.25 Camden has now been awarded the 'Tree Cities of the World' designation six times (2019, 2020, 2021, 2022, 2023, and 2024), a programme run by the Arbor Day Foundation and the Food and Agriculture Organization of the United Nations.
- 4.26 External organisations, including the Forestry Commission, the Association of Tree Officers, the London Tree Officers Association (LTOA), and the Greater London Authority, have also recognised Camden for its innovative and holistic approach. We have participated in several academic studies including one with University College London (UCL) on measuring carbon capture in trees.
- 4.27 During 2025, Camden's Tree Planting Strategy (2020-2025) was used as a case study in the Forestry Commissions, Urban Forestry and Woodland Advisory Committee Networks Vision for Urban Forestry. [Communi-trees](#) were also recognised in the Vision for its innovative approach to community tree planting.
- 4.28 A new tree contract for a term of 3 years plus 1 started on 1st April 2025 with Treehab Ltd. They were the incumbent tree contractor for the previous contract and were successful in the tender process. Treehab Ltd is a local firm based in the western part of the borough and employs local people. They are responsible for our tree maintenance, replacement tree planting, and tree emergencies.
- 4.29 An event for the 80th anniversary of the atomic bomb being dropped on Hiroshima and Nagasaki was held in Tavistock Square on 6th August 2025. The proceedings included the planting of a new commemorative cherry tree, following the discovery that the original cherry planted on 6th August 1967 by the then Mayor, Mrs Millie Miller J.P., was decayed and had to be removed for Health & Safety four weeks before the event. Officers liaised with the event organisers, Campaign for Nuclear Disarmament, Mrs Miller's son and other stakeholders to coordinate the removal and planting in time for the commemoration.

4.30 Camden's Tree Planting strategy 2020-2025, is progressing well and has so far planted 2,971 trees.

4.31

Year	Replacement Trees	New Trees	Total
2020/21	362	217	579
2021/22	171	368	539
2022/23	209	391	600
2023/24	324	294	618
2024/25	273	362	635

Total tree planting: replacement and new trees

2024/25 planting by ward	Replacement	New
Belsize	9	19
Bloomsbury	12	27
Camden Square	5	8
Camden Town	4	18
Fortune Green	35	51
Frognal	17	0
Gospel Oak	23	8
Hampstead Town	18	6
Haverstock	24	28
Highgate	23	7
Holborn and Covent Garden	5	20
Kentish Town North	11	15
Kentish Town South	23	0
Kilburn	14	23
Kings Cross	5	38
Out of Borough	2	0
Primrose Hill	8	34
Regents Park	3	10
South Hampstead	9	46
St Pancras and Somers Town	5	4
West Hampstead	18	0
Total	273	362

Tree planting by ward

4.32 Capital funding of £1.94 million (including £61,000 from the Urban Tree Grant) was allocated in 2021/22 for the programme, which will fund the

planting of 3,000 trees and provide three years of watering over a four-year period. In addition, we have successfully secured funding from other streams:

Additional funding secured (from the start of the tree planting strategy)	Funding
Urban Tree Challenge Fund	£138,233.34
West End Project	£20,862.00
Clear Channel funding	£60,000.00
Central District Alliance bid	£8,809.00
Highways projects – internal contribution	£31,013.00

- 4.33 During the summer of 2024, the tree team ran an iTree Eco project in collaboration with Treeconomics to estimate the benefits provided by Camden's urban forest. This initiative involved volunteers from the community and the Council, who surveyed plots across the borough and recorded the vegetation present. The data collection phase of the project is now complete, and the results will be available in the new year.
- 4.34 During the 2024/25 planting season, Communi-trees and residents from Constable House, Mortimer Estates, Sidney Boyd Court and West Croft Estate have planted 90 trees. Since 2022, they have planted a total of 260 trees across Camden estates.
- 4.35 The Enforcement team has assessed and determined 1074 tree applications and served 35 Tree Preservation Orders (TPOs) so far this year (data from 8 October 2025). The number of TPOs served already surpassing the annual totals of the two previous years which was 24 and 23 in 2023 and 24 respectively. The increased number of TPOs is a result and benefit of the TPO data review project, which aims to create a publicly accessible digital record of the Council's TPOs. As part of the work data is being checked and cleansed, the opportunity to identify and protect more trees is being harnessed, 12 TPOs (of the 35) were served in one ward on trees that had no protection as they are outside a conservation area. The team aims to trial a new system for displaying TPOs in late 2026. The team are also contributing to the Tree Data Working Party under the London Tree Officers Association, collaborating with the Greater London Authority (GLA) to develop standardised tree data protocols across London boroughs.

Green Space Investment Programme

- 4.36 Between 2020-2025 the GSIP programme has delivered £12,761,745 of capital investment into Camden green spaces. Over the past year, £2.5 million in projects have been delivered through the Green Space Investment Programme, along with £1 million in additional capital investment and renewal works.

4.37 The following projects have been completed in the last year:

- Swiss Cottage Open Space phase 1
- Purchase Street Open Space
- Crabtree Fields
- Mill Lane Open Space food growing project
- Denyer House
- Kingsland Estate
- Camelot House
- Waterlow Park play area
- Three Points Park
- Oakley Square Gardens
- Harrington Square Gardens
- Kilburn Grange Park high road entrance
- Talacre Town Green play area
- Lymington Road nature area
- Queens Crescent public realm
- York Way planting
- Gray's Inn Road planting
- Levita House north courtyard



Happy scenes at the grand opening of refurbished Crabtree Fields project completed in September 2025

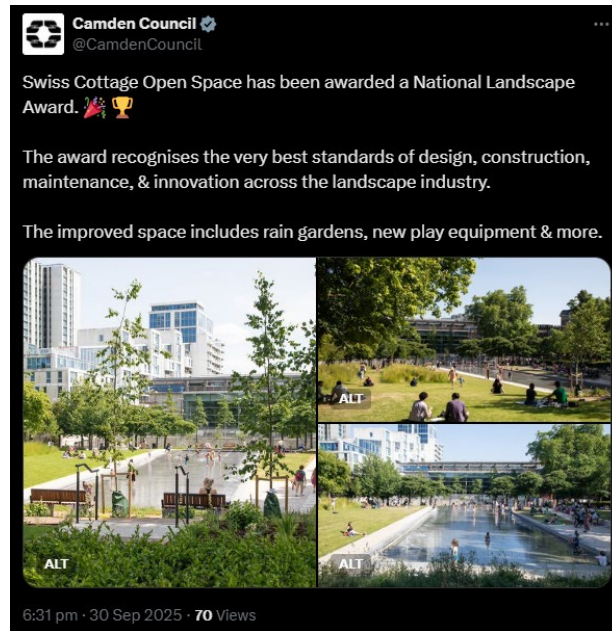
4.38 Funding updates include:

- £3.3 million will be invested in landscape works across the Central Somers Town area over the next year, including improvements to Purchase Street Open Space (completed) and Polygon Road Open Space (under construction).

- The Levelling Up project at Kentish Town is almost completed, which includes £250,000 funding for Talacre Town Green.
- 4.39 The new five year Green Space Investment Programme (GSIP) strategy for 2026-2030 is currently in development and being presented to Cabinet in December 2025. This process has involved reviewing the methodology for allocating funding towards projects and is working to produce a public-facing document to engage the community.
- 4.40 Projects that have commenced and are in pre-construction phase of planning and design include:
- Borough wide accessibility improvements – This includes entranceway works, surfacing and signage review.
 - St Silas Estate – A comprehensive food growing offer which has been led by the Tenants Residents Association (TRA) and will see a vacant area of the estate turned into a community garden.
 - Leighton Crescent and Montpelier Gardens – A combined project that will include a site review and renewal.
 - Argyle Square Gardens – This will include improvements to the surrounding public realm associated with the Belgrove House development.
 - Maygrove Peace Park – The project has commenced, with designers now appointed.
 - St Andrew Gardens – A site-wide refurbishment to improve materials and asset replacement.
 - Cantelowes Gardens – An asset replacement project, which may include a padel court (subject to planning consent).
 - Talacre Town Green – Funding has been secured for the site-wide masterplan development, in addition to levelling-up funding for the sports centre.

Awards

- 4.41 This year the Green Space Investment Programme has been recognised for two awards, one at Swiss Cottage Open Space and one at Compton Close. It is great to see these projects recognised as examples of excellence that the programme consistently delivers for the residents of Camden.



Social media post celebrating Swiss Cottage Open Space winning a National Landscape Award

Greening the Public Realm

- 4.42 The Camden Green Space Development Team continues to support the delivery of new green infrastructure as part of the transport programme. This work includes the creation of numerous new rain gardens and street trees across the borough, as well as major transformation projects such as the Phoenix Road, Queens Crescent and Holborn Liveable Neighbourhood schemes.
- 4.43 To build on the excellent project work delivered in partnership with the transport programme, the Green Space Development Team have secured a new project officer who is dedicated to delivering green infrastructure through the transport programme. This dedicated resource will free up capacity within the wider team, as well as providing a more specific focus on programme management and design input at the key stages of the different projects.



*Biodiverse verge planting Proctor St
Savernake Rd*



Now community managed

- 4.44 We are also in the process of developing a Green Infrastructure Strategy which will outline our priorities for establishing green infrastructure across the borough and how it helps us respond to Camden's Ecological and Climate emergencies.

HS2 Mitigation around Euston

- 4.45 The greening Compton Close project was shortlisted for a Camden Design Award in October 2025 and was the winner of the small projects category. Following on from the success of this project, officers are working to secure plants, trees and materials from the HS2 temporary gardens on Hampstead Road and Euston Square Gardens.



Compton Close Camden Design Award winner

- 4.46 At North Gower Street, a range of exciting open space improvements including new paving, 42 sqm of greenery, two new trees, living walls with climbing plants, and an eye-catching mural designed with Old Diorama Arts Centre (ODAC), London-based artist PiNS and the local community has been delivered along the pedestrianised section of North Gower Street.



North Gower Street completed with sensory planting

- 4.47 With funds Camden secured from HS2 for Signage and Wayfinding, Camden supported ODAC in the development and delivery of the Regents Park Estate Story Trail Project. The Story Trail is a celebration of the past, present and future of Regent's Park Estate, promoting a sense of local pride, safety, and connection through a series of public artworks. There are [10 different art installations](#) throughout the estate which form the Story Trail.



Woman Whole covers installed across the Regents Park Estate area

Permanent improvements for Phoenix Road

- 4.48 A decision has been made to make the trial improvements on Phoenix Road permanent, creating a safer, greener link between Euston and St Pancras. Funded through HS2 compensation, the project has already delivered wider pavements, new planting, reduced traffic, and safer routes for walking and cycling.

- 4.49 Following community feedback, further permanent changes will include a new traffic-free green space with planting, seating and play areas, more greening on side streets, accessible junctions, and heritage features celebrating the area's history. Traffic reduction measures will remain in place with extra support such as new disabled parking and a loading bay for essential services.



Public consultation boards at the Greening Phoenix Road engagement event in summer 2025

Creating Space for Nature

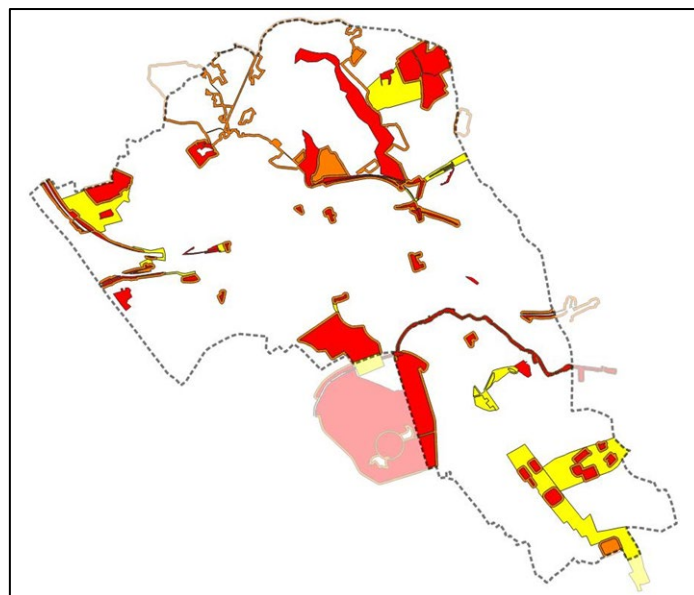
- 4.50 In 2024/25, Camden Green Gym, delivered by The Conservation Volunteers on behalf of the Council, supported 2,954 hours of volunteering across 88 sessions in our parks and green spaces. The table below summarises the main activities undertaken by Camden Green Gym across the borough's nature reserves, parks, and other green spaces in 2024/25.
- 4.51 Summary of activities undertaken by Camden Green Gym in 2024/25:

Environmental measure	Qtr 1	Qtr 2	Qtr 3	Qtr 4
Bags of litter collected	32	50	37	25
Habitats for wildlife created (e.g. insect hotel, loggery)	2	5	11	3
Invasive species removed (m2)	66	24	6	15
Area of meadow improvement works (m2)	353	1052	1190	191
Length of paths cleared/improved (m)	565	495	307	124
Ponds worked on	3	3	3	4
Area of woodland improved (m2)		34	34	133
Length of hedges improved or planted			21	71
Wildflower plugs/bulbs planted			500	
Trees planted				130

- 4.52 Local nature reserves continue to be well used by nurseries and schools for outdoor learning and environmental education with the two most popular sites at capacity and increased use of the least popular site.

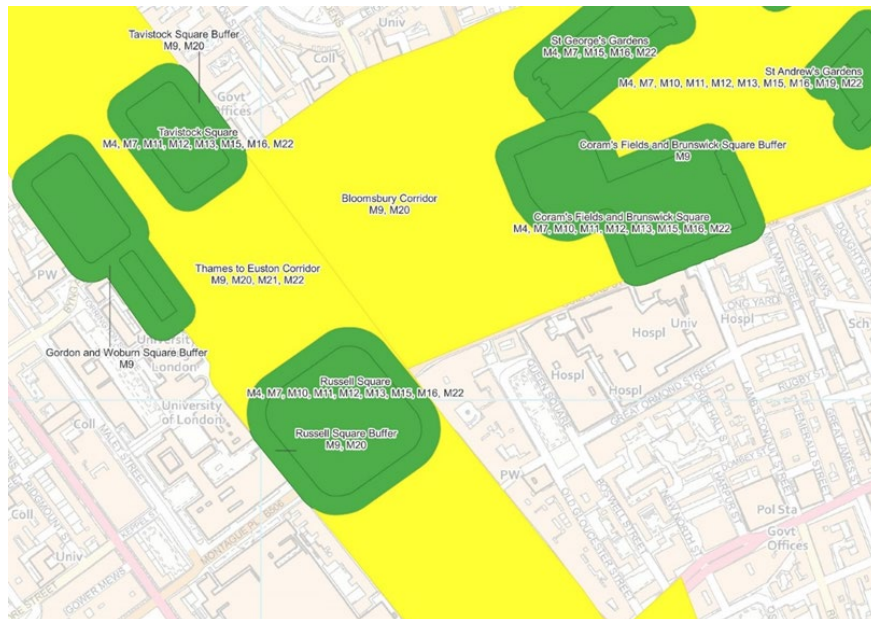
Nature Communications and Events

- 4.53 To bring the residents of Camden closer to nature, we promote and provide opportunities for engagement with nature:
- In January the Council promoted the Big Garden Birdwatch run by the Royal Society for the Protection of Birds (RSPB), with some aligned branding and messaging, on our social media channels and via posters in our parks.
 - In June we ran a 'Moth Morning' to coincide with Insect Week, promoted on the Council's social media and via the Royal Entomological Society's Insect Week website, and at the location.
 - We promoted the Big Butterfly Count on social media channels through the July-August survey period and via posters in parks. On the back of previous events we organised, the Friends of Waterlow Park organised a butterfly identification workshop and walk, that we helped to promote and fund.
 - In September, we organised a workshop on the ecology and management of urban grasslands, for the Friends groups and volunteers that help look after our green spaces, and invited partner organisations across Camden and neighbouring boroughs.
- 4.54 A draft of the Camden Nature Recovery Network has been produced and is informing the development of the London Local Nature Recovery Strategy by the Greater London Authority, as well as the Council's emerging Green Infrastructure and Tree Planting Strategies.



Draft Camden-wide Nature Recovery Network (CNRN) map, showing 'better' (red), 'bigger' (orange) and 'more joined' (yellow), illustrating that green spaces can be made better, bigger (which in such a constrained area usually

means tree planting to buffer them) and the priority corridors for linking them up.



Close up of the CNRN showing some of the actions associated with the areas, such as tree planting, grassland improvement, woodland management etc, that link back to delivery of the biodiversity strategy

Camden's butterflies need YOU!

Take part in the **BIG BUTTERFLY COUNT** 18th July - 10th August




Discover how to take part or download the free app!

bigbutterflycount.butterfly-conservation.org


Camden Council · Follow
29 August · 🌐

Saturday night is International Bat Night!

At least nine of the UK's 18 species of bats have been recorded in Camden. Our most common species, the Common Pipistrelle, is found across the borough, weighs about the same as a 20p piece and can eat thousands of insects a night!

You can find out more about London's bats at <https://londonbats.org.uk/>

Why not undertake a Sunset Survey and help add to our knowledge of bats? <https://www.bats.org.uk/.../getting-started/sunset-survey>



Recent examples of nature communications

5. Cemeteries

- 5.1 The Council owns two active cemetery sites in the borough – roughly half of Islington and Camden Cemetery (Finchley) and the entirety of Hampstead Cemetery (Fortune Green).
- 5.2 The delivery of the cemetery service is provided by Islington Council through the Islington and Camden Cemetery Service (ICCS) providing a sustainable, high-quality service that meets the needs of residents across both boroughs.
- 5.3 During the year, 2,099 funerals were facilitated (942 burials and 1,157 cremations), representing an increase in demand compared with the previous year. This remains within expected operational levels and demonstrates the service's continued capacity to meet local needs efficiently and sensitively.
- 5.4 A new burial area providing 400 additional graves has been opened, ensuring the continued availability of affordable and accessible burial options. Burial ground development remains a strategic focus as the service plans for future capacity and continues to offer a range of choices that meet the needs of our diverse communities. The successful completion of the Crematorium Refurbishment Programme has further enhanced facilities, improving comfort and accessibility for families and visitors. Work is also progressing on the service's Waterworks Upgrade Programme at Islington and St Pancras Cemetery, with supplier engagement underway to modernise infrastructure and strengthen long-term resilience.
- 5.5 At Hampstead Cemetery, community engagement remains central to service development. In response to resident feedback, plans have been progressed for new public toilet facilities to improve accessibility, particularly for visitors with health or mobility needs. This proposal supports Camden's wider priorities to invest in open spaces that promote wellbeing, inclusion, and access for all. Alongside this, the Circle of Memory public artwork developed in partnership with the Friends of Hampstead Cemetery and the Camden Arts Development team has been approved. The installation, comprising a circle of stones surrounding a new cedar tree, are intended to celebrate remembrance and reflection within the historic setting of the site. A pilot for extended opening hours in 2026, supported by local councillors, will further improve access while maintaining the respectful and tranquil character of the site.

- 5.6 The Islington and Camden Cemetery Service Partnership Agreement is now due for renewal and both Councils are working towards renewal reflecting the partnership's success in delivering sustainable, inclusive, and affordable services that support diverse communities and ensure long-term provision for future generations.

6. Parking

Debt Clinics

- 6.1 In this period, the Investigations Team within Parking Operations, in collaboration with our contracted Enforcement Agents (formerly Bailiffs), organised 7 Debt Surgeries at the Crowndale Centre. Invites to these sessions were sent out across the year to around 7,000 debtors, resulting in 43 attendees. These sessions provided debtors a safe and supportive space to discuss their parking and traffic penalty debts, alongside any other circumstances, and receive support.
- 6.2 The Council Tax team attended several sessions to provide advice and guidance to those debtors who had multiple debts with the council. Of the 43 attendees, 21 were able to be referred to welfare teams to provide bespoke advice and a way forward to resolve their debt issues. These interactions have resulted in officers cancelling some debts where it was not in the Council's interest to pursue them, revert other debts away from Enforcement Agents to avoid additional fees, offer discounts, and arrange payment plans. Crucially, officers were able to refer debtors to the welfare department of the Enforcement Agents managing their debts.
- 6.3 Further collaboration with Enforcement Agents has also strengthened Camden's commitment to safeguarding vulnerable members of the public. Our contracted Enforcement Agents have been highlighting approximately 40 potentially vulnerable debtors to the Council each week. Each case is then reviewed, and where appropriate, interventions have been made to ensure enforcement action is proportionate and fair.

Estate Services Parking

- 6.4 Improving parking enforcement to facilitate access for emergency and service vehicles across housing estates in the borough is ongoing. Nine estates have benefitted from traffic management orders which robustly manage problem parking on those estates. This has dramatically reduced dangerous parking at those locations as well as providing a higher assurance of access for essential services that regularly use the estates, keeping roads clear for emergency vehicles, and increasing safety.
- 6.5 We have also seen an increase of resident parking permits for those who need to park on the estates where they live. The new enforcement model will be replicated across more estates in the coming year.

Healthy Schools Streets

- 6.6 Many schools face issues caused by busy streets nearby, including problems with parking, traffic congestion, road safety, and air quality. The Healthy School Streets programme seeks to address these challenges by restricting traffic during school drop-off and pick-up times.
- 6.7 We assess streets outside schools to identify those that can reasonably be restricted to motor vehicles without causing traffic displacement. When a Healthy School Street is introduced, streets are closed to vehicles for a limited time during school days, with enforcement through signs and either bollards or cameras equipped with license plate recognition.
- 6.8 Several more of these schemes were rolled out this year and have resulted in changes in vehicle use and driver behaviour around schools across the borough. Managed and enforced by the Parking Operations service via CCTV, these schemes continue to improve air quality and enhance safety for our youngest citizens.

Blue Badge Fraud Enforcement

- 6.9 The Blue Badge scheme is a national initiative to help disabled people and those with non-physical disabilities (such as people who are autistic, have a learning disability, dementia or a mental illness) to park close to their destination, either as a passenger or driver.
- 6.10 Fraudulent use of blue badges may include use of a counterfeit badge, use of a lost or stolen badge, or use of a badge belonging to a deceased person. Misuse of genuine badges may also arise from use of a badge when the holder is not present. The fraudulent misuse of a blue badge has a major impact on those blue badge holders who have a genuine need to use the parking facilities their badge provides.
- 6.11 In partnership with the council's Audit service, Parking Operations carried out 12 operations led by intelligence provided by our own parking activities and reports from members of the public. During these operations, 1,200 vehicles were inspected resulting in 26 badges being confiscated for misuse and ultimately resulting in 4 successful prosecutions.

7. Transport

Review of the Camden Transport Strategy

- 7.1 The Camden Transport Strategy (CTS) was adopted in 2019, setting out Camden's overarching strategic priorities for transport in Camden over 2019-2041. The CTS, titled 'Healthy Streets, Healthy Travel, Healthy Lives' sets out Camden's objectives to make travel across Camden safer, healthier, and more sustainable. The three year CTS Delivery Plan was approved in

November 2024 for the period 2025/26 to 2027/28, setting out an ambitious programme of schemes for development and implementation.

Infrastructure Updates

- 7.2 The £12m **Better, Safer Kilburn project** has been approved with work now underway to bring the transformational high street scheme forward to construction. At the northern end of the corridor, a programme of pavement and public realm enhancement works was completed early in 2025 alongside the [Kilburn High Road \(south\)](#) project featuring a segregated southbound cycle lane.
- 7.3 In [June 2025](#), we made the decision to take forward the “**main**” **Kilburn High Road scheme** with LB Brent and Westminster City Council. This circa £12 million project will be funded jointly through TfL’s Borough Safer Streets funding programme and the Council. Detailed design work is now taking place ahead of forecast construction starting in 2026.
- 7.4 **Holborn Liveable Neighbourhood** – Progress has been made to deliver the full £50m+ transformation of Holborn to transform the area to support healthy, thriving communities. Smaller scale STARter projects such as improvements to Kemble Street, High Holborn and Procter Street, and Adeline Place are underway.
- 7.5 We have upgraded **multiple km of high quality cycle routes** across the Borough, including on York Way, St Pancras Way, Chalk Farm, Haverstock Hill and Gray’s Inn Road.
- 7.6 The Camden Square Safe & Healthy Streets project has been made permanent and new, trial through-traffic restrictions have commenced in the Holmes Road area.
- 7.7 The launch of our “**Healthy Travel Choices**” programme of supporting measures including cycle training, cycle loan, cargo bike hire and permit scrappage schemes.
- 7.8 Camden’s Healthy School Streets schemes at including at [Kingsgate Primary School](#) (Maygrove Road), [West Hampstead Primary school](#) (Dornfell Street area), and [St Christopher’s/Maria Montessori and Devonshire House](#) (Belsize Lane/Lyndhurst Gardens), and across 4 schools in the Somers Town area (see [here](#)) have been permanent after trial periods.
- 7.9 We have rolled out “Green Mobility hubs” in the [Somers Town](#) area with locations implemented on Doric Way, Charrington Street, Chalton Street, Cranleigh Street and Goldington Crescent. Additional locations, including on Brill Place, are approved for construction. Each scheme combines a range of sustainable mobility features – including a mix of a car club space, EVCP charging, dockless bike hire/e-scooter facilities, Santander docking stations,

cycle parking and cargo bike hire. In some locations, new planting and benches have also been introduced.

Camden High Street Pedestrianisation

- 7.10 The trial pedestrianisation of Camden High Street was implemented in May 2025 as an Experimental Traffic Order (ETO) for up to 18 months with the aim to create a safer and healthier place for residents, businesses, and visitors. The pedestrianisation runs from the junction of Parkway, Camden Road and Kentish Town Road (just before Camden Town Underground Station) to the junction with Hawley Crescent and Jamestown Road.
- 7.11 Improvements to the public realm included the installation of a mural, seating, and greening delivered through the London Festival of Architecture. This is in direct response to what people asked for in the consultation.
- 7.12 The pedestrian space has also become the stage for a dedicated cultural programme; adopting a culturally led-regeneration approach to pedestrianisation and positioning the borough as a leader in cultural creativity. Since the start of the trial there has been a street party celebrating 60 years of Camden, a music festival, fashion show, and pop up DJ shows. The next six months will see a series of artistic commissions that animate the high street, building towards a Spring Festival co-created with residents and local partners to celebrate the culmination of the pedestrianisation trial.
- 7.13 Monitoring data is being collected throughout the trial to understand the impact of the scheme, including bus journey times, traffic volumes, air quality, and road traffic collision data. There is also a live [Commonplace page](#) where residents, businesses and other stakeholders can share their thoughts and provide feedback on the trial. This information will inform decisions about the future of the scheme. A further public consultation will take place in 2026 before a decision is made on the future of the scheme.

Policy/Behaviour Change Updates

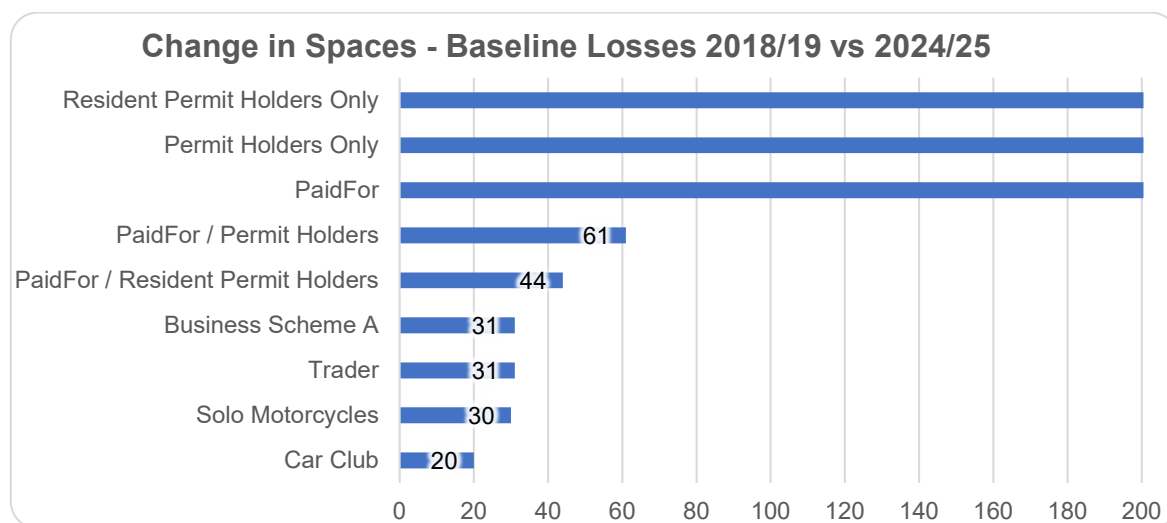
- 7.14 The percentage of Camden residents trips made by “sustainable modes” – (walking, cycling and public transport) has risen from a baseline (2017) of 85%, to 87% (2024)
- 7.15 Within that over-arching mode share, trips made by walking continue to see excellent growth in the Borough. Walking mode share by residents has increased from 42% (2017 baseline) to 52% (2024); already in excess of our long-term target of 50% by 2041.
- 7.16 Walking and cycling, combined (“active travel” modes) now comprise almost 57% of all trips made by Camden residents. More people in Camden are connected to safe cycle networks than ever before; by 2024, 61% of our residents are within 400m of a strategic cycle network route, on track

towards our 2030 target (70%). And cycle flows (volumes) at 88 [TfL count points in Camden](#) up by 43% between 2019 and 2024.

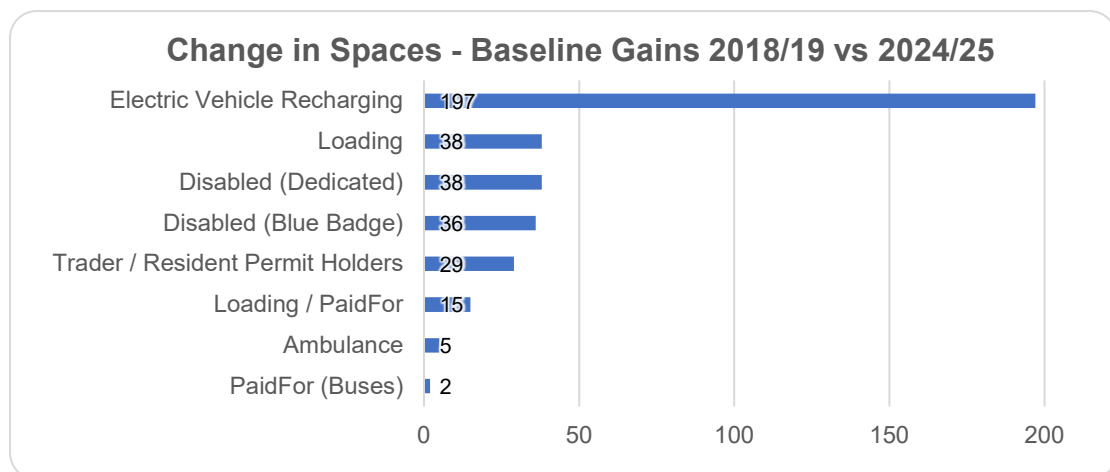
- 7.17 From a road safety perspective, Killed and Seriously Injured (KSI) casualties have reduced by 43%, when comparing the latest full year figures (2024) to the 2010-2014 baseline. This is the highest reduction of any inner London Borough, and the second highest reduction of any London Borough overall. Since the CTS was adopted in 2019 (KSIs have reduced in Camden by 27%; again this is the highest of any inner London Borough and again the second highest reduction of any London Borough overall.
- 7.18 Within London, the [Healthy Streets Scorecard](#) provides data to show the health of each Borough's streets based on ten indicators – including extent of traffic-restriction measures, length of protected cycle lanes and bus priority corridors, controlled parking zones and so on.
- 7.19 Camden currently ranks 3rd out of the London Boroughs with a score of 6.94 (out of 10 – up around 0.5 on prior year). The Scorecard assessors noted that Camden:
- 7.20 *“Continues to perform strongly in the Healthy Streets Scorecard, delivering consistently high results across a wide range of sustainable transport and infrastructure indicators.....Camden’s consistent top-tier performance positions it among the leaders in Inner London”*

Impact and Change

- 7.21 Since 2018/19, we have made extensive amendments to our kerbside, in particular changing space previously used for parking of motor vehicles to more sustainable uses.



A graph to show the loss of parking spaces across Camden from 2018/19 to 2024/25



A graph to show the gain of spaces for more sustainable and inclusive use across Camden from 2018/19 to 2024/25

7.22 In summary, those gains and losses have meant that:

- Since the CTS was adopted in 2018, 16% of all paid for parking spaces in the Borough have been removed, and 10% of all resident/permit holder spaces – a cumulative total of almost 2,000 spaces.
- Between 2023/24 and 2024/25 alone, 273 resident/permit holder spaces were removed for more sustainable uses, and 82 paid for parking spaces.
- We rolled out a further 250 fast electric vehicle charging points across the Borough, as well as completed the programme of “dedicating” for EV-only the kerbside space adjacent to all of our lamp column charging points across Camden.

8. **Environment Services**

8.1 The work of our Environment Services team significantly contributes to our We Make Camden ambition to create a green, clean, and sustainable place, where everyone is empowered to help tackle the climate emergency. This will be achieved by working closely with our communities to reduce waste, promote the circular economy, and increase recycling, all while minimising the environmental impact of Camden’s waste management operations.

Environment Services Contract

8.2 In 2017/18, Camden entered into an 8-year Environment Services contract with Veolia Environment Services, delivering the £5 million savings target set out in Camden’s Financial Strategy (2015-18). The contract is centred around four outcomes, each focusing on Camden’s needs. These are monitored and managed through annual targets and key performance measures. The outcomes are:

- Managing Camden’s local environmental quality to an agreed standard

- Minimising waste and maximising participation in reuse and recycling
- Generating additional surplus from business recycling and waste services
- Increasing local employment opportunities and promoting local economic development

8.3 The contract is managed through twenty-four key outcome targets that measure performance against agreed standards using live dashboards and data sets. The contract also includes a process for an annual service report and improvement plan. These documents assess service performance for the previous year in relation to the contract targets and outline an improvement plan for the forthcoming year. [Annual reports and contract documents are available on Camden's website.](#)

8.4 During 2024/25, Year 8 of the contract, Cabinet approved an extension of the existing contract with Veolia for 8 years starting on 1 April 2025. An investment of £1 million in street cleansing was also agreed. The contract extension negotiations included the introduction of 14 new electric waste/recycling collection with the goal of electrifying all possible vehicles by the end of the contract to align with Camden's ambitions in the Camden Clean Air Action Plan 2023-26.

Street Cleansing Investment

8.5 In 2023, we carried out stakeholder engagement to understand the strengths and weaknesses of the Environment Services contract so we could better invest in services to meet the priorities of residents and councillors. This engagement highlighted that cleaner streets were a key priority, leading to a £1 million investment in street cleansing services which commenced delivery during 2024/25.

This included:

- Three new barrow street sweeping beats
- Three new cargo bikes to support street cleansing operations
- Three new night cleansing cage vehicles for night economy hotspots
- Two new jet washing vehicles targeting hotspots across the Borough
- Beautification initiatives to reduce graffiti and fly-tipping
- Preparation for introduction of new time-banded areas (due Summer 2025)

8.6 The new barrow beats enabled increased cleansing schedules which saw improvements in the general appearance of the new beat areas, reducing litter and detritus. Cargo bikes were introduced in the Camden/ Kentish Town, Kilburn and Queen's Crescent areas carrying out manual cleansing, small fly-tip and flyposting removal activities. The night cleansing cages, introduced in the Camden area, operate between 10pm and 6am and have resulted in improved cleanliness of the streets during and following peak periods.

- 8.7 Four community skip events were delivered in 2024/25, enabling residents to responsibly dispose of waste who would otherwise be unable to do so. The events attracted 145 attendees who disposed of a variety of items including electrical, bulky and garden waste. Items were separated for recycling where possible. Four community skip events will be held per year as part of the cleansing investment.



Photos showing street cleansing investment including engagement from Mayor Eddie Hanson and Cllr Adam Harrison, Cabinet Member for Planning and a Sustainable Camden

- 8.8 The investment enabled further expansion of on-street residual waste storage to 15 locations across the Borough, enhancing provision services for around 1,150 households living in flats above shops and keeping bags off the street. Feedback from residents, members, and businesses continues to be positive. The service will continue to be rolled out to the remaining flats above shops, where practicable, throughout 2025/26.

Maintaining and Improving Cleanliness in Public Spaces

- 8.9 Street cleansing standards in Camden are independently assessed by Keep Britain Tidy (KBT) three times a year. The results, as shown in the Table below, indicate an increase in litter to 7.11% in 2024/25 and graffiti increased to 15.8%. Improving standards for both litter and graffiti remains a key priority for Veolia.

KBT street cleansing scores 2021-2025

Year	Litter	Detritus	Fly-posting	Graffiti	Fly Tipping
2021/22	4.5%	5.5%	3.5%	11.7%	3.2%
2022/23	7.3%	5.0%	5.6%	11.8%	2.4%
2023/24	5.7%	1.7%	5.8%	12.2%	4.5%
2024/25	7.1%	2.7%	7.8%	15.8%	5.07%

- 8.10 The majority of the cleansing investment measures commenced at the end of 2024/25 and into the 2025/26 financial year. The breakdown of the 2024/25 KBT scores by tranches shows there were improvements in Tranche 3 (which covers Dec '24 to Mar '25 period) when compared with Tranche 1:

Year	Tranche	Area	Litter	Detritus	Fly-posting	Graffiti	Fly Tipping	Leaf & Blossom Fall
2024/25	1	All data	6.94 %	2.58%	8.89%	18.87 %	5.00%	2.08%
2024/25	2	All data	8.10 %	4.01%	6.42%	14.39 %	4.05%	21.23%
2024/25	3	All data	6.28 %	1.73%	8.24%	14.25 %	6.15%	0.98%

- 8.11 The number of reported fly-tips increased in 2024/25, as outlined in the Table below. Camden actively encourages the reporting of all fly-tips and has made it easy for residents, officers, and Veolia to report them through the app, website, and back-office systems since 2017/18. The KBT survey results show that the percentage of fly-tips present in surveyed areas increased to 5.1% in 2024/25.

Reported fly tips 2021/22 – 2023/24

Year	2021/22	2022/23	2023/24	2024/25
Total reported fly tips	29,804	31,457	33,961	35,571
KBT survey results	3.24%	2.36%	4.5%	5.1%

- 8.12 In 2024, the fixed penalties for the offences of fly tipping, littering and graffiti/fly posters were increased. In February 2025, Kingdom was awarded a further 2-year contract to work alongside Camden's Education and Enforcement officers to reduce fly-tipping and the amount of time waste remains on our streets. We are increasing the number of fixed penalty notices issued to those caught littering and fly-tipping to increase compliance. Education and Enforcement was transferred from Environment Services to Community Safety in April 2024.
- 8.13 In June 2024, Camden launched the No More Rubbish Excuses campaign, raising awareness of the new enforcement team and fines for fly-tipping and littering. In addition, Veolia worked with Rhyl Primary School's Eco-Leaders

team on a localised fly-tipping awareness campaign. Pupils took part in a competition to design anti fly-tipping messaging, the winners of which were made into permanent signs and put up in the local area, in the Haverstock ward.



- 8.14 Veolia also delivered a targeted fly-tip reduction project across 14 streets in the north Kentish Town area between February and May 2025, which included leaflets, letters, signs, bin stickers, and door-knocking. The project achieved a 66% reduction in fly-tipping across the targeted streets. Learning from the project will feed into future campaigns and long-term engagement strategies.
- 8.15 Through Community Infrastructure Levy (CIL) funding, an allocated full-time officer has continued to focus on improving the street environment in the West Hampstead area, implementing a range of projects and innovations. This includes working with businesses to clean up graffiti, increasing compliance, improving waste management for flats above shops, enhancing waste presentation along West End Lane, and CCTV in fly-tip hotspots.
- 8.16 In July 2024, an Environment Education and Enforcement officer was appointed for a fixed term of 2 years to address emerging environmental and public realm issues such as dockless bike hire management. The officer monitors compliance of approved Construction Management Plan/delivery routes, vehicle engine idling, illegal ice cream trading, and illegal street trading alongside the Enforcement Team.

Reducing Waste, Increasing Recycling, and the Circular Economy

- 8.17 Camden's 2023-26 Reduction and Recycling Plan (RRP) provides a roadmap for how Camden will reduce waste, increase recycling, and support the transition to a more circular economy. The RRP details key initiatives designed to help achieve the targets set out in the Mayor of London's 2018 London Environment Strategy.
- 8.18 Camden's recycling rate has seen a slight drop from 29.1% in 2023/24 to 27.7% in 2024/25, as highlighted in the Table below. However, total annual

residual waste per household has dropped from 345kg in 2023/24 to 300kg in 2024/25.

Camden Recycling Rates 2021-2025

2021/22	2022/23	2023/24	2024/25
28.2%	27.5%	29.1%	27.7

- 8.19 Using the ReLondon Estates Recycling Toolkit, Veolia delivered a project on the Borrowdale estate in Autumn 2024, testing recommended interventions to gain better understanding of how estates recycling can be improved. This included door-knocking, letters and posters in communal areas. Evaluation highlighted increased use of the recycling facilities, reduced contamination, and tidier bin areas.
- 8.20 A food waste participation project, focusing on a low performing round in the Camden Town ward was carried out between October and December 2024. The project used engagement interventions such as door knocking and bin stickers. The results showed a noticeable increase of 341% in food waste tonnage collected from the area and a 21% increase in caddy presentation on targeted streets.



- 8.21 In partnership with Veolia, Fixing Factory, and Think & Do, six repair events took place across the borough, enabling residents to recycle, repair, and share their electrical items. The events aimed to encourage the reuse of electrical items and promote the circular economy across Camden. Events attracted 158 attendees over the year, and a total of 46 items repaired. Veolia's Sustainability Fund supported nine community projects, including donkey grazing at Parliament Hill School to help prepare the soil for a wildflower meadow on the school grounds.



Public Toilets

- 8.22 Following market engagement in November 2024, procurement commenced in March 2025 for the Cleaning and Maintenance of Public Conveniences contract covering the five attended sites across Camden, with the contract due to start in November 2025. In-depth site surveys have been undertaken to support improvement works at the West End Lane and South End Green site. Delivery of these and further improvement works across all Camden's public convenience sites will commence in 2026.
- 8.23 Environment Services supported delivery of a community toilet trial in Kilburn Grange Park between July and September 2024, led by the Kilburn Older Voices Exchange. Learning from the trial has fed into development for future provision.

9. Planning Policy and Implementation

- 9.1 The Planning Policy and Implementation section of the Planning Service is responsible for preparing and updating the Council's key planning policy documents, particularly the Local Plan. It collects the Community Infrastructure Levy (CIL) for both Camden and the Mayor of London, monitors and processes Section 106 legal agreements, and collects Section 106 funds. The team also works closely with other Council services and ward councillors to allocate funds collected for local infrastructure and support local communities with neighbourhood planning. Additionally, it manages Assets of Community Value (ACVs), monitors development, and responds to national and Mayoral planning consultations.

Camden Local Plan

- 9.2 The Council are in the process of reviewing and updating the Camden Local Plan, our main planning document, which provides the framework for managing development in the borough.
- 9.3 The Proposed Submission Draft Local Plan was approved by Cabinet and Council in April 2025 and published for consultation from in May - June 2025, enabling residents, businesses, community groups, landowners, and

other key stakeholders to share their views on the Plan. In total, we received over 2,000 comments from almost 700 respondents.

- 9.4 The Plan was submitted to the Secretary of State for Housing, Communities and Local Government on the 3 October 2025. Following the examination, the final version of the Local Plan, incorporating any changes recommended by a Planning Inspector, will be reported to Cabinet and Full Council for adoption.
- 9.5 The updated Plan sets out the Council's vision for future development in Camden over the next 15 years and includes planning policies and site allocations to help achieve it. The review will ensure that Camden continues to have robust and up-to-date planning policies that align with Council priorities. This will allow us to make planning decisions that contribute towards addressing the borough's need for homes, jobs, and infrastructure. It will ensure that development is delivered in a way that is socially and economically inclusive, responds to the climate and ecological emergency and brings benefits to Camden and its residents.

Neighbourhood Plans

- 9.6 Camden, along with Westminster, has the most neighbourhood planning activity in London. The borough has seven adopted Neighbourhood Plans produced by local communities. Earlier this year Hampstead Neighbourhood Forum became the first forum in Camden and London to formally update their neighbourhood plan. The Hampstead Neighbourhood Plan 2025-2040 passed independent examination in March 2025 and was adopted by the Council in July 2025.
- 9.7 Consultation on the Draft Kilburn Neighbourhood Plan, which covers parts of Camden and Brent, took place in May - July 2025 and the Plan passed independent examination in October 2025. The plan will now be subject to a local referendum in the neighbourhood area. Subject to this, the Plan will progress to adoption by the boroughs.
- 9.8 A number of Neighbourhood Forums have sought redesignation following the expiry of their five-year designation period. The Somers Town Neighbourhood Forum were designated for a further five years in January 2025, and Kentish Town Neighbourhood Forum were redesignated in March 2025.
- 9.9 The Council continues to provide support and advice to the borough's neighbourhood forums on all aspects of neighbourhood plan work, including on designation applications, plan content, and statutory procedures.

Assets of Community Value (ACVs)

- 9.10 Community groups can nominate land or a building to be designated as an asset of community value. The Council designates an asset if its main use furthers (or has recently furthered) the social well-being or social interests of

the local community and could do so in the future. Since the last annual report, the Council has designated five Assets of Community Value (ACVs). Three of these are new designations: the Central YMCA in Bloomsbury, Ye Olde Swiss Cottage public house, and The Assembly House public house in Kentish Town. The others relate to properties that were previously designated as ACVs but where the listing had expired: The Pineapple public house in Kentish Town and The Black Cap public house in Camden Town.

- 9.11 Camden's communities have nominated significantly more community assets for designation than neighbouring authorities. There are currently 30 ACVs on Camden's register of assets, with pubs being the most commonly designated type of asset (14). ACV designation provides for a moratorium when an asset is being sold, allowing the community to prepare a bid to buy the asset. Designation as an ACV is also a material consideration in planning decisions. ACV designations run for a period of five years. After this, assets can be renominated and designated for a further five years.

Community Infrastructure Levy (CIL)

- 9.12 The Community Infrastructure Levy (CIL) is a charge collected from developments, used to fund a range of physical and social infrastructure. The Council collected £6.5 million in CIL during the financial year 2024-25. Of this, plus accumulated funds, £4 million was spent on footway and carriageway improvements across the borough and £1.1million allocated to the Holborn Liveable Neighbourhood project, with CIL also providing some funding towards the Council's regeneration, culture and transport programs.
- 9.13 25% of Camden's CIL is spent locally, with funds allocated through a ward-based, Member-led system. In 2024/5, the Council collected £1.6 million in local CIL. £2.6 million of local CIL funds (including some funds accumulated from previous years) were spent over the same period on more than 80 community projects sponsored by ward Councillors. Projects funded in the past year include:
- Improvements to Dragon Hall Community Centre
 - A cycle permeability scheme at Wicklow Street
 - A micromobility hub at Loxham Street
 - Bike hangar provision at various locations across the borough
 - Refurbishments and improvement to the children's playground at Polygon Road open space
 - The outdoor space at Talacre Playcentre

Section 106 (S106) Contributions

- 9.14 Section 106 legal agreements are used to mitigate the impact of development in line with agreed policies. They can either cover the direct provision of infrastructure onsite or consist of financial contributions towards off-site infrastructure provision. In 2024-25, 117 Section 106 agreements

were signed between developers and the Council. These agreements included contributions with a combined value of £43.1million, including £33 million for affordable housing, £1.3million for public realm and environmental improvements, £2 million for carbon dioxide offset measures, £1.7 million for economic development/training Initiatives, and £1.3 million for highways.

- 9.15 The Council collected £11.6 million in Section 106 payments during the financial year 2024-25. This included £6.5 million for affordable housing, £1.3 million for environmental, public realm and pedestrian improvements, £683K for highways, and £717K for carbon offset measures £463K for employment and training initiatives. To address concerns about the impacts of construction, we also collected £779K for Construction Management Plan implementation, which supports staff and resources to monitor and manage construction impacts.
- 9.16 During the year £13 million was used to help provide affordable housing within the Community Investment programme. £3.3million was spent on pedestrian and environmental improvements in Holborn and Bloomsbury, and on Gray's Inn Road and Granary Street. £1.7 million was spent on public open space improvements at Swiss Cottage, Harrington Square, Canteloves Gardens, Maygrove Peace Park, St Andrews Gardens, Leighton Crescent and Montpelier Gardens, and a masterplan for Talacre Town Green.

10. Design and Place

- 10.1 Design and Place, a multidisciplinary team of planners, architects, and urban designers, leads transformation programmes across the Borough including a suite of Supplementary Planning Documents (SPD) that will help shape Camden's growth areas. Engagement with our communities is a fundamental part of this work that will deliver a significant number of affordable homes, jobs, and new open spaces.

West End Lane to Finchley Road

- 10.2 The West End Lane to Finchley Road Supplementary Planning Document (SPD) was adopted in September 2021 and is now a material consideration in the determination of planning applications within the area. In December 2023, planning permission was granted for the redevelopment of the O2 centre, car park, Homebase store, car showrooms, and Builders Depot at 14 Blackburn Road.



Sketch of West Hampstead Station redevelopment

Holborn Vision

- 10.3 Consultation on the draft Holborn Vision took place between February and April 2024, alongside the Holborn Liveable Neighbourhood project. A permanent display was hosted for six weeks at Holborn Library, complemented by four street pop-ups, four exhibition event days, focused meetings, and a bespoke Commonplace website that engaged nearly 800 people. The Vision has been updated to reflect the feedback received, and the Cabinet Member approved the final document as a Supplementary Planning Document in January 2025. It is now a material consideration in the determination of all planning applications within its boundary.



Sketch for New Oxford Street by LDA Design from Holborn Vision

Bloomsbury Vision

- 10.4 Immediately to the north of the Holborn Vision boundary, Camden has been collaborating with key landowners (University of London, UCL, Birkbeck, and the British Museum), to develop a Bloomsbury Vision. This initiative builds on the Bloomsbury Green Corridor proposal to create a pedestrian-friendly network and green links between open spaces, institutions, and transport hubs, connecting Euston to the River Thames. The goal is to make Bloomsbury a greener, cleaner, vibrant, and accessible place. The focus is on enhancing the public realm across public and private ownership. Given its

emphasis on the public realm, the Bloomsbury Vision is not expected to be adopted as a Supplementary Planning Document (SPD), but it will serve as a public realm strategy shared by the landowners. Despite not being an SPD, the Bloomsbury Vision will need to closely align with the Holborn Vision, and consultation on the draft document took place in October and November 2025. Once the consultation results have been analysed the document will be updated and adopted in spring 2026.

Regis Road Area Guidance

- 10.5 The Kentish Town Planning Framework was adopted as a Supplementary Planning Document (SPD) in July 2020. It highlighted the complex land ownership situation within the Regis Road Growth Area, which is covered by the Framework, and emphasised the need for comprehensive development to ensure cohesion and the coordinated, proportionate, and timely provision of infrastructure.
- 10.6 In 2022, Camden approved a Regeneration Strategy for Regis Road and subsequently decided to sell its land at Regis Road and Holmes Road to Yoo Capital, subject to the reprovision of Camden facilities. Yoo Capital conducted its own consultation for the Camden Film Quarter in April 2024, and in November and December 2024, Camden held a consultation on the draft Regis Road Area Guidance. This guidance updates and builds on the recommendations in the Kentish Town Planning Framework and was adopted as a supplementary planning document in March 2025.

Camden Design Awards 2025

- 10.7 The Camden Design Awards were held again in 2025 with an awards ceremony at Space House on 1st October. Appropriately the exceptional retrofit of the grade II listed Space House was given an award by the independent jury along with a number of Camden's own schemes. The list of winners and commendations is below but the awards again demonstrate the exceptional design quality of development in Camden and by Camden.

Major Project Award Winners

- 8 Bleeding Heart Yard – Groupwork
- Space House – Squire and Partners
- Highgate Newtown Community Centre – RCKa
- Maitland Park Estate Regeneration – Cullinan Studio
- Arthur Stanley House – AHMM
- Central Somers Town – Adam Khan Architects
- Edith Neville Primary School – Hayhurst and Co

Small Project Award Winners

- Triangle House – Brown Urbanism
- Elliott Square Roof Extensions – Burd Haward Architects Richard Davies Architects

- Steel House – EBBA Architects
- Reciprocal House – Gianni Botsford
- Greening Compton Close – Cityscapes, Darryl Moore



Highgate Newtown Community Centre



11. **Development Management and Enforcement**

Applications

- 11.1 In 2025, there has been a strong focus on clearing backlogs and reducing end-to-end times on planning applications. This aligns with national priorities to accelerate decision-making and reduce reliance on extensions of time that take applications outside statutory timeframes. The latest figures show that minor applications are being determined in an average of 8 weeks, which meets the statutory timeframe. For major applications, the average determination time exceeds the 13-week statutory period; however, all have been decided within agreed extensions of time.
- 11.2 Despite faster decision-making, the overall approval rate has remained high, with 90.7% of minor applications approved so far this year. As shown below, the approval rate has declined since 2022, largely due to the stronger emphasis on determining applications within statutory timeframes. We continue to perform well above the London borough average for minor applications, which stands at 76.3%.
- 11.3 In contrast, our major application approval rate has fallen below the London average of 88%. This figure is more prone to fluctuation due to the smaller number of major applications. In this case, the drop in 2025 relates to three refusals, the latter two of which are due to be considered at appeal:
- 14 Blackburn Road
 - The former Mansfield Bowling Club
 - Camden Goods Yard (currently under appeal)

Year	2022	2023	2024	2025 (YTD)
Majors approved	100.00%	92.31%	100.00%	81.25%
All apps approved	94.12%	94.71%	91.87%	90.70%

Strategic Sites

- 11.4 The planning service has successfully negotiated a wide range of strategic applications, which, once delivered, will contribute to the provision of much-needed affordable homes and key infrastructure that will facilitate a shift to a more sustainable community. Additionally, these schemes will offer employment, training, and educational opportunities for local residents. They will also generate significant amounts of Community Infrastructure Levy (CIL) and Section 106 contributions, which, as explained earlier in this report, will help deliver a range of Camden priorities and projects.

- 11.5 Although there have been redevelopment proposals this year, there has been a notably stronger emphasis on retrofitting and reusing buildings, as well as making better use of vacant or underdeveloped sites, which is welcomed.
- 11.6 In March the planning committee considered an application for the redevelopment of Euston Tower comprising erection of a 32-storey mixed-use building with the building core retained which will provide approximately 77,223 sqm of offices and research and development floorspace (Class E(g)) and office, 1000sqm of retail, café and restaurant space (Class E) and 1,600sqm of learning and community space (Class F). The scheme also will deliver a contribution of £27 million towards the provision of off-site affordable housing at Tybald's Estate, £380k to Euston Circus Healthy Streets (TfL) and a £1.5m pedestrian, cyclist and environmental contribution.



Euston Tower Sketch

- 11.7 In April 2025, the application for the former Odeon site at Shaftesbury Avenue was approved at planning committee for part demolition, restoration, refurbishment and extensions to the existing Grade II listed building. The scheme will deliver a 6,300 sqm theatre, complete with ancillary restaurant and bar facilities, anticipated to become the first permanent London home for Cirque du Soleil, alongside a 6,000 sqm hotel located in the heart of the West End. This scheme also provides public benefits in the form of over £4 million towards the provision of affordable housing and £375k to deliver public realm improvements in the vicinity of the site as part of the Shaftesbury Avenue Area Safe and Healthy Streets and the Holborn Liveable Neighbourhoods projects.



Saville Theatre Redevelopment Sketch

- 11.8 The S73 (amendment) application for 100 Avenue Road was considered at the planning committee in June. The original application, approved at appeal in 2016, proposed a mixed-use development involving the demolition of existing buildings and the construction of two new structures. The scheme comprised of 184 residential units, along with commercial and community floorspace, delivered through a standalone tower on the northern part of the site and a lower-scale building to the south. Development stalled and the site was subsequently sold by Essential Living to Regal London. This application proposes alterations to that approved development that would increase the number of homes to 237 homes, plus additional commercial and community floor space for the Winch. This scheme delivers both an increase in housing and secures a greater proportion of affordable housing and improvements in terms of tenure.
- 11.9 The committee also considered at application at 33-35 Jamestown Road for redevelopment of the site with a 5/6 storey building for use primarily as 6000 sqm of student accommodation with 400 sqm of flexible commercial (Class E) and 27 affordable homes. Both the student accommodation and affordable homes will contribute positively to meeting Camden's housing targets as well as bringing back into active use an underused brownfield site in Camden Town.
- 11.10 Several other significant development projects have been submitted this year and are expected to be considered at planning committee later in the year including West Kentish Town Estate which proposes 900 homes and Juniper Crescent which includes 478 homes. Other major mixed-use

developments which will be considered are 180 Arlington Road which includes the former Mecca Bingo and Odeon site on Parkway and commercial developments for a hotel at 123 Judd Street and offices at 120 Holborn and 7 Ridgemont Street.

- 11.11 The planning service continues to take a positive and active role in supporting proposals after planning approval to ensure that schemes progress on site. This includes the use of Post Approval Agreements to streamline discharge of conditions and facilitate early engagement with developers. The proposes helps to ensure schemes progressing to implementation within expected timeframes.
- 11.12 This year we have continued to see developments being built out in the Knowledge Quarter, a hub for innovation and life sciences. This includes:
- **Tribeca:** This will be London's largest purpose-built life sciences campus, located at St Pancras Way. The first building was completed in July 2024, and it is expected that the whole development will complete in 2026. The scheme includes over 55,000 sqm of lab space, 69 residential apartments, retail units, and public realm.
 - **Belgrove House & Acorn House:** Belgrove House is being developed as a life sciences hub, it is progressing on site and is due to be completed in 2026. The affordable housing secured as part of this development is being delivered an Acorn House on Gray's Inn Road and is also nearing completion.
 - **Moorfield's Eye Hospital:** This development will see the relocation of Moorfields Eye Hospital on City Road and the UCL Institute of Ophthalmology on Bath Street, to a new, integrated centre in St Pancras. This development is also under construction.
- 11.13 Mixed use schemes at St Pancras Commercial Centre and Plots R8 and S4 at Kings Cross Central are complete, delivering both residential homes and commercial floorspace.
- 11.14 Camden's Community Investment Project (CIP) continues to be a major driver of housing delivery and has significantly boosted Camden's housing delivery figures for the year. This includes:
- **Agar Grove:** The third phase of the estate was completed in December 2024, adding 125 homes (including 69 affordable homes). Later phases are now under construction and once complete will deliver 496 homes across six phases.
 - **Charlie Ratchford Court:** This development has also contributed to Camden's housing stock, providing around 115 homes 26 of which are affordable.

- **Abbey Area Regeneration:** Progress continues here, with new homes and community facilities being delivered as part of the wider regeneration strategy.

Enforcement

- 11.15 The planning team received 825 reports of breaches of planning control in 2025 and closed 829 enforcement investigations (data taken on 8th October 2025). The most effective way to resolve breaches is through informal action, where enforcement officers secure the resolution of a breach by threatening formal action. Informal action is often quicker, avoiding the substantial time and associated costs of appeals if notices are served. In 2025, 39% of all cases were closed following informal action. Where there is sufficient harm and efforts to resolve the breach have not been successful, formal enforcement action will be taken. In 2025 so far, 65 formal notices were served.
- 11.16 The enforcement team continues to address the rise of short-term let accommodation, which is a contributing factor to the loss of permanent homes. In London, it is permitted to rent an entire property as a short-term let for up to 90 nights a year. The team's findings indicate that the majority of short-term lets are operated as full-time businesses, with residents renting out their property while away on holiday being the exception. The team have served 29 notices this year in relation to short term lets as of 8th October 2025.
- 11.17 The Enforcement team started a quarterly newsletter outlining the work of the team, with three additions release at the time of this report. This is sent to all Councillors and residents can sign up to receive copies.
- 11.18 The Enforcement Team continues to lead the way in using planning powers to address the removal of older phone kiosks cluttering the borough's high streets. Since 2022, the project has successfully seen the removal of 64 Phone kiosks across the borough. This follows the removal of 19 kiosks on Tottenham Court Road in 2023, after Breach of Condition Notices were served. Using the threat of formal action the team negotiated the removal of 35 kiosks. Working alongside planners in the application team they have helped ensure our streets are not cluttered with further new phone kiosks which result in the loss of space for pedestrians, adding to crime and anti-social behaviour and creating visual clutter. Since 2022, there have been 69 appeals (planning and advertisement consent refusals) against the decision to refuse new phone kiosks. Of those determined, 67% have been dismissed at appeal supporting the Council's approach to protect the public realm.
- 11.19 Camden's approach to Construction Management Plan (CMP) enforcement includes both proactive and reactive elements. The CMP Planning Site Inspector conducts inspections of CMP sites to ensure compliance, while the CMP Enforcement Officer addresses non-compliant sites and handles complaints about CMP sites from local residents, Councillors, or businesses.

The Enforcement Officer takes action to secure compliance, serves as a direct contact for local residents, and frequently attends Construction Working Groups. Both officers are part of the Council-wide Construction Management Forum, which includes representatives from highways, parking, air quality, environmental health, and planning obligations. In 2025, 160 visits were completed, with 90% of sites being compliant at the time of inspection. For non-compliant sites, the issues were resolved within seven days of the inspection.

- 11.20 There were three hearings and 87 appeal decisions in 2025, with 72% of appeals dismissed, supporting the Council's decision to refuse planning permission or issue an enforcement notice.

Land Charges

- 11.21 Search volumes have remained consistently high in 2025, averaging around 1,150 requests per quarter, which is comparable to recent years. His Majesty's Land Registry (HMLR) continues to advance the Local Land Charges migration project, which involves transferring local land charges data to a centralised system. Camden has now completed a significant portion of the pre-migration work and is in the final phase of data standardisation. Full migration is expected to be completed by the end of 2025/26. The project has also presented an opportunity to review and improve the procedures for dealing with new registrations and Con 29 searches. The positive result of this project will be that people seeking to obtain land charge searches on property in Camden will be able to get that information quicker, supporting the property market.
- 11.22 During 2025 turnaround times for search requests fluctuated and have at times exceeded the statutory limit, this was a result of the need to prioritise the data improvement work for the migration project. However, performance is improving, the backlog has reduced, and turnaround times are expected to return within statutory limits by mid-November 2025 placing the team in a very good position ahead of the migration.

Digital Transformation of Planning Services

- 11.23 Since 2023 Camden's Digital Planning team has transformed how residents, applicants and officers engage with the planning system. Working with over 100 local authorities through the Open Digital Planning (ODP) programme, Camden has helped design and deliver new national standards and tools that are now shaping the future of planning reform.
- 11.24 In Camden, this innovation has delivered clear results. Our "Find Out If You Need Planning Permission" (FOIYNPP) service has been used thousands of times since launch, reducing unnecessary applications and cutting planning duty calls by 60%. This has enabled us to remove the duty planner service entirely and redeploy officer time to more complex casework. The new digital pre-application service, introduced in 2025, has already supported over 80

requests, including a free route for advice on home energy efficiency improvements supported by the Camden Climate Fund.

- 11.25 The Report a Planning Breach (RAB) service, launched in 2025, has seen 147 breaches reported, resulting in 62 positive service outcomes. PlanX has automatically screened 56 potential enforcement cases, saving an estimated 3.5 working days in total, based on average case-handling times. A future PlanX to Back-Office Planning System (BOPS) integration will further streamline this process by removing remaining manual data entry.
- 11.26 Camden continues to trial the processing of live applications through PlanX and BOPS, making decisions faster and more consistent, with circa 77 applications already handled. The Digital Planning Register and Digital Site Notice are also improving transparency and participation, giving residents easier access to view, understand and comment on proposals online.
- 11.27 This work has not only modernised parts of our service in 2025 but has positioned Camden at the centre of national planning reform conversations with Ministry of Housing Communities and Local Government (MHCLG) and the Planning Inspectorate (PINS). Following an introductory meeting with PINS, we have agreed next steps towards potentially integrating Back Office Planning System (BOPS) with their systems; a key milestone in creating a fully digital, end-to-end planning process. Camden continues to influence how data, AI and automation will underpin the next generation of planning services.

12. **Single Member Decisions**

Report Title	Decision Date
Procurement Strategy for a Parking Management System and Associated Servicesref: 4422	01/10/24
Christchurch Hill and Flask Walk/ Well Walk Area Safe & Healthy Streets Schemeref: 4446	17/10/24
A Revised Approach to the Camden Climate Fundref: 4454	30/10/24
Redesignation of Hampstead Neighbourhood Forumref: 4471	12/11/24
Goods Way Safe and Healthy Streetsref: 4530	10/12/24
Redesignation of Somers Town Neighbourhood Forumref: 4546	07/01/25
Adoption of the Holborn Vision Supplementary Planning Documentref: 4573	21/01/25
Procurement Strategy for Cleaning and Maintenance of Public Conveniences Serviceref: 4571	21/01/25

<u>Camden Street (South) Area Safe and Healthy Streetsref: 4572</u>	21/01/25
<u>Camden High Street Pedestrianisationref: 4587</u>	10/02/25
<u>Adoption of the Regis Road Area Guidance Supplementary Planning Documentref: 4637</u>	28/02/25
<u>Redesignation of Kentish Town Neighbourhood Forumref: 4641</u>	04/03/25
<u>Implementation of a Lane Rental Schemeref: 4640</u>	04/03/25
<u>Better, Safer Kilburnref: 4649</u>	13/03/25
<u>Shaftesbury Avenue Area Safe and Healthy Streetsref: 4738</u>	14/05/25
<u>Review of Article 4 Directions for Permitted Development Rights in Conservation Areasref: 4746</u>	27/05/25
<u>St Margaret's School and St Luke's CoE School Healthy School Street Schemeref: 4749</u>	30/05/25
<u>Greening Phoenix Road: Permanent Public Space and Healthy Streetsref: 4800</u>	07/07/25
<u>Camden Town Unlimited Business Improvement District Renewal Ballot Proposalref: 4848</u>	12/08/25
<u>Albany Street Safe and Healthy Streetsref: 4911</u>	02/10/25
<u>Local Implementation Plan Programme of Investment for 2026/27</u>	23/10/25

13. Finance Comments of the Executive Director Corporate Services

The Director of Finance has been consulted and has no comment to add.

14. Legal Comments of the Borough Solicitor

Legal Services have been consulted and have no specific comments.

15. Environmental Implications

All the programmes and work outlined in this report have positive environmental implications for Camden and are built from, or strongly aligned with, the Camden Climate Action Plan, Biodiversity Strategy, and Clean Air Action Plan.

REPORT ENDS