

COUNCIL – 21st JULY 2025

BUSINESS FROM THE ORDINARY COUNCIL MEETING ON 7th APRIL 2025

Report of the Borough Solicitor

This report relates to the unconsidered motions and the responses to written Council questions from the Council meeting held on 7th April 2025.

1. Background

The Constitution advises that where motions have not been dealt with by the conclusion of the meeting of the Council, they fall without discussion and are passed to the relevant Cabinet Member or Committee Chair whose response is then to be provided to the next meeting of the Council. Also the responses to written questions that were provided for last ordinary Council meeting are to be circulated as part of the next meeting's agenda for information. These responses are then noted at that next meeting without debate.

2. Responses to motions

At the meeting of the Council held on 7th April 2025, there were 3 motions that were not considered due to lack of time. As the Constitution requires, these motions were passed to the relevant Cabinet Members or Committee Chairs, who are required to report back to the next meeting of the Council. A copy of the motions and the responses are attached at Appendix A to this report.

3. Responses to written questions from Councillors

The written questions from Councillors and the responses from Cabinet Members linked to the Council meeting on 7th April 2025 are attached as Appendix B.

4. Recommendation

That the report be noted.

- 1. To consider the following motion, notice of which was given by Councillor Sharon Hardwick and which was seconded by Councillor Anna Burrage**

The Council notes that:

- Camden's libraries are vital public spaces that support lifelong learning, creativity, connection and wellbeing. They offer free access to books, digital tools, study resources, warm spaces, cultural activities and trusted advice – all within safe, inclusive and welcoming environments.
- In the face of the ongoing cost-of-living crisis, libraries have continued to play a crucial role in supporting residents – helping people get online, access services, and feel part of their community.
- Labour-led Camden has consistently invested in strengthening and modernising the borough's libraries – not just improving buildings, but reimagining what libraries can offer in response to the changing needs of our communities.

This Council further notes examples of improvements across Camden's libraries, including:

- West Hampstead Library: Reopened as planned on Monday 24 March after four months of decarbonisation and redecoration works. The project delivered three key energy conservation measures: replacing single glazing with heritage-style double-glazed units, upgrading the gas boiler system to air source heat pumps, and switching all remaining lighting to energy-efficient LEDs. These upgrades will prevent around 9 tonnes of CO₂ emissions per year, supporting Camden's borough-wide goal to reach net-zero by 2030.
- Swiss Cottage Library: Refurbished in 2022 with a major £3.7m upgrade focused on sustainability, energy efficiency and accessibility. Through the Public Sector Decarbonisation Scheme, the library underwent a deep retrofit that significantly reduced its carbon footprint and future energy bills. Earlier this year, the newly redesigned children's library was also unveiled to mark the library's 60th anniversary – an imaginative, interactive space that brings new life to a much-loved and iconic landmark.
- Highgate Library: Reopened in January 2024 after a major upgrade that included a new lift, improved layout, new furniture, and full internal redecoration – creating a more accessible and welcoming space for the community, whilst preserving the character of the Grade II listed building.
- Kilburn Library: Plans are underway for a full redevelopment, bringing the underused lower ground floor back into community use and adding new facilities including a kitchen, creative and digital spaces, and an improved children's area.

- Holborn Library: Currently undergoing refurbishment, including better ventilation, modernised shelving and furniture, and the creation of flexible spaces to support community use and partnerships.
- Queens Crescent Library: Recently enhanced with new family-friendly areas and interactive resources that have helped make the space more engaging and welcoming.

This Council additionally notes:

- With the second-highest adult engagement rate in England in 2023/4, Camden's libraries have seen a strong return to in-person use since the pandemic, with growing footfall and high demand for in-library support, study space, events and digital access. Residents increasingly value libraries as trusted spaces to connect, create and learn.
- Libraries are playing a growing role in delivering Camden's cultural vision – supporting everything from reading groups to coding clubs, creative workshops to live performances. They are spaces for local expression and opportunity.
- The launch of Camden Reading Together reaffirmed our commitment to building a borough of readers – celebrating the joy and power of reading across generations and communities.
- Libraries are also adapting to new ways of meeting residents' needs, including through the Library of Things initiative, which supports sustainable living and promotes shared community resources.

This Council resolves:

1. To continue prioritising long-term investment in Camden's libraries and library staff, and seek additional opportunities to expand and futureproof facilities and services.
2. To promote and celebrate the transformation of Camden's libraries, ensuring residents are aware of the wide range of services, spaces and support now available to them.
3. To deepen partnerships with community groups, schools, young people, cultural organisations and local creatives – ensuring libraries reflect and respond to the energy, interests and diversity of Camden's communities.
4. To reaffirm our commitment to keeping Camden's libraries open, free and welcoming to all – ensuring they remain a cornerstone of inclusive public life, rooted in local neighbourhoods and evolving with the needs of our residents.

RESPONSE BY THE CABINET MEMBER FOR JOBS, YOUNGE PEOPLE AND CULTURE

- 1.1. Camden libraries offer a welcoming space for children, young people and adults alike to read, learn, connect and explore in. They play a crucial role for our children in their formative years; supporting literacy, sparking imaginations and building confidence through stories and sensory

experiences. They also provide vital spaces for our young people to study in giving access to resources and technology they may not have at home. Through partners such as the Apex project we support them with their next steps.

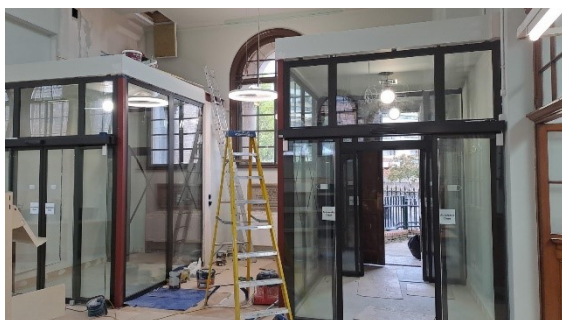
- 1.2. At their core, libraries stand for fairness- providing free access to knowledge and resources in an inclusive environment. In doing so, they help us work towards our **We Make Camden mission supporting young people's access to economic opportunity**. They also support our We Make Camden Ambitions to actively tackle injustice and inequality, **creating safe, strong and open communities** where everyone can contribute. Queens Crescent is the first library to test and learn through a Sharing Space in partnership with Think & Do. The Sharing Space activates resident ideas in the library space with community wallpaper and activities to interact with in the space.
- 1.3. Our vision, passion and commitment to libraries is demonstrated by our record of having the highest library participation rate in London and second highest in the country. The LGA Peer Challenge that took place in June 2023 steered the service by recognising the ambition and highlighting increased capacity to match the ambition. The service has secured over £1m in external investment into the service to help deliver these ambitions.
- 1.4. We have invested over £6.3m into our libraries with a programme of works that have all included an element of reducing the carbon footprint and some refurbishment. The projects have been funded by a combination of S106; local ward community infrastructure levy; a bequest; public sector decarbonisation scheme; Arts Council England funding and some internal capital funds. The building projects have included:
 - **Decarbonisation of Swiss Cottage Library-** The library needed renewal with fabric, mechanical and electrical infrastructure being at end of life, leading to poor internal conditioning of the building and high levels of heat loss. This combined with the knowledge that the library is also one of the largest consumers of energy on the council's estate, made it a priority site for improvement. We sought to secure the site's future whilst also looking to introduce low carbon technologies to meet our commitment to do everything it can to make Camden Net Zero by 2030. Predicted to make significant savings to running costs at more than £31,000 a year whilst also delivering annual carbon savings of 138 tonnes of CO₂e.



Swiss Cottage Library children's library and teen space redesign- has created an inspiring space for sharing and telling stories with a sensory approach. The library service has involved the community in the creation of dressing up bags; guiding and artwork displayed including a piece inspired by the all age autism strategy. The redesign, funded by a bequest and local ward community infrastructure levy funding from Primrose Hill and Belsize wards, has helped us to mark the sixtieth year of Swiss Cottage Library.



- A decarb and restoration project at Highgate Library** Highgate Library, a grade II listed 118-year-old building, which we have calculated can achieve net-zero emissions, is predicted through the decarbonisation project to make significant savings to the library's running costs of more than £17,000 a year whilst also delivering annual carbon savings of 33 tonnes of CO₂e. This shows how we have enabled heritage and energy conservation to coexist. The works at Highgate library included a range of carbon reducing interventions including replacement of gas boilers with air source heat pumps, fitting insulation to the walls and roofs, fitting solar photovoltaics panels to on the library roof, installing internal LED Lighting, installing secondary and double-glazing, Improved ventilation, and Installing entry lobbies to reduce drafts, with carbon savings of 33 tonnes of CO₂e.

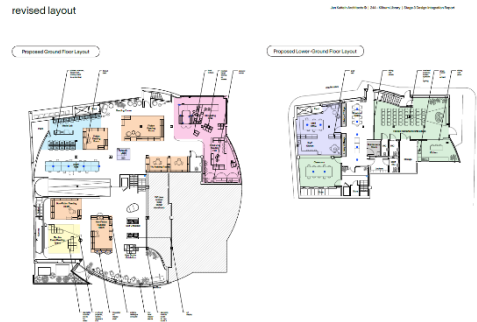


- **A decarb project at West Hampstead** will see the Energy Conservation Measures prevent 9 tonnes of CO₂ emissions per year and 190 tonnes over the project lifetime, this is equivalent to the carbon released by driving a petrol-powered car 500,000 miles. Three Energy Conservation Measures have been delivered in this project including renewal of the original single glazed timber and metal windows with double glazed units, maintaining the heritage of the exterior fabric. Renewal of the dated gas boiler system with Air Sourced Heat Pumps which provides an environmentally cleaner delivery of heating and hot water to the library. Renewal of all lighting that is not currently LED lighting, which will save in electricity costs and minimise future replacement of light fittings.
- **A decoration and investment into Holborn library** have taken place to reactivate spaces and renew the main spaces including replacement LED lighting funded by Sustainability Net Zero Levy; improved ventilation; redecoration and some new furniture. Holborn Library has been subject to a potential development project for the last 10-15 years so this work brings the entire building back into use. Limited new shelving was purchased due to a sustainable approach of cladding existing shelving. Due to a minimum period of five further years before any development will take place it was decided a considered and measured level of refurbishment should take place. The furniture and new shelving can be taken to another library should a development project start. These improvements were supported by S106 and Local Community Infrastructure Levy funding from Holborn and Covent Garden Ward.



- **Proposed redesign of Kilburn Library** Kilburn Library is on a long lease and needs updating. The Mechanical & Electrical systems has failed and there is a lower ground floor that has been vacant since before the pandemic when it was rented to a youth offer provider and then during the pandemic as a vaccinations hub. A tenant has not been forthcoming due to the requirements under the lease that it is used for a community focused purpose. A changing places accessible toilet and shower has been installed and opened in November 2024 funded by an external grant. An application for the maximum amount available - £499,000 - was made to Arts Council England for the

Libraries Improvement Funding and was successful to support the redesign of the library. There was community engagement through One Kilburn and with schools to help develop the plans. Internal capital funds have been secured to complete the project, and the lower ground floor will have a community focus with an anchor tenant supporting upskilling and the circular economy.



1.5. An all-age **Camden Reading Together reading for pleasure strategy** has recently been developed with a missions and challenges focus demonstrating how libraries can work with other Council teams and community partners to find solutions for and with the community. The strategy was written through collaboration with the Reading Agency, with key objectives being –

- Widen understanding of reading and the library space
- Nurture lifelong learning and language development
- Build skills and pathways into meaningful employment
- Promote and support health and wellbeing
- Support Camden residents to live and age well

Some of the deliverables of the reading strategy are included below and we will evaluate using the Good Life Camden framework. These include -

- The production of packs for registrars to give to new parents with a library card and selection of leaflets from different services funded by S106
- Auto enrolment of primary age children – the data protection impact assessment DPIA is complete, and we are awaiting the library management system provider to complete a data security questionnaire.
- Recruitment of volunteer Community Connectors to be ambassadors for libraries in the community
- Pop-up collections of books in community settings signposting people to libraries.
- Increased marketing and promotion in more outreach locations to shift perception
- The Mercers Funded 4-year programme Read, Write, Share: Children finding their voice through reading with the Reading Agency for Years 5 and 6

1.6. The service continues to join forces with local organisations and our strategic partners to uphold our strong sense of community engagement and collaboration. Some of the key partnerships include:

- The British Library with Camden being the only London Borough a member of the Living Knowledge Network; Summer Reading Challenge launches at the British Library; work with the Business Centre (BIPC); a LibraryOn funded project with RNIB.
- [ShiftED](#) will be co-locating at Holborn Library and delivering termly making sessions with Primary Schools who will join the library whilst they are in the space. The library team will be able to connect the children to books and reading.
- Arts for Dementia are delivering a yearlong programme at Swiss Cottage Library. The Apex project are running mentoring sessions with young people at Swiss Cottage.
- Arsenal in the Community run a reading and table tennis club at Pancras Square Library and a Telling Tales poetry and spoken word programme in partnership with Apples and Snakes for children aged 7 years plus.
- Life After Hummus have set up a Waste Café and preloved clothes rail at Pancras Square which has transformed the atmosphere near Contact Camden.

1.7. **The libraries Team** have conducted Listen and Reflect as temperature checks with the team and also completed a skills audit to inform training. An annual all staff conference where the libraries close for the day and the team are joined by DCMS (Department of Culture Media and Sport) Library Team, Arts Council England, RNIB, Libraries Connected, and CILIP. This year two half-day closures have supplemented this in January and May with training provided by the British Library and a programme developed with CILIP. The training plan includes bespoke conflict management training and in development a trauma informed practice training. The first apprenticeship has just been organised with an existing member of the team.

1.8. Ultimately, our libraries are far more than the places we borrow books from- they are hubs of learning, growth and opportunity. By supporting children's literacy, empowering young people to shape their futures, and fostering strong community connections, libraries play an essential role in building stronger, more resilient communities.

1.9. We will continue to work together with our partners to ensure that libraries remain a vital resource for everyone. Developing spaces to support neighbourhood work to take place.

2. To consider the following motion, notice of which was given by Councillor Judy Dixey and which was seconded by Councillor Linda Chung

This Council notes that:

- From April 2025, National Insurance employer contributions (NICs) will rise by 1.2 per cent, and the secondary threshold will be lowered, meaning employers will start paying NICs on employees' earnings from £5,000 instead of £9,100;
- Analysis by the Nuffield Trust estimates these changes will cost the adult social care sector over £900 million next year and impose a total burden of £2.8 billion on 18,000 independent social care providers across England;
- The Local Government Association has called for "immediate adequate investment" to address unmet need and ensure timely access to social care.
- In February the House of Lords passed a Liberal Democrat led amendment to exempt social care from NIC rises, but that the Labour government overturned the amendment in the House of Commons.

This Council believes that:

- Social care providers, including hospices and voluntary sector organisations, will struggle to absorb these costs, leading to service cuts or staff reductions.

This Council therefore requests that Cabinet:

- Calls on the Government to exempt social care providers from all increases in employers' NICs;
- Urges the Government to ensure cross-party talks on social care funding, aiming to deliver long-term, sustainable solutions has its full support;
- Requests the Leader of the Council to write to the Chancellor, relevant Government ministers, and Camden's MPs to express these concerns and share a copy of this motion.

RESPONSE BY THE CABINET MEMBER FOR HEALTH, WELLBEING AND ADULT SOCIAL CARE

- Camden continues to work closely with providers of adult social care every financial year to adjust to increases in the London Living Wage and inflation, to support and maintain a sustainable, high-quality market of local providers in line with our duties under the Care Act. This process is well-co-ordinated at a local level and is linked to work that takes place regionally across North Central London.
- Camden set up a cross-council working group in 2024 following the announcement from government about National Insurance increases to monitor requests from adult social care providers, as well as other providers of services in the borough (children's commissioning, housing and the voluntary community sector). This working group has continued to meet regularly, reporting any risks and issues to the Director of Finance.

- The sustainability of Camden's social care market is robust due to the strong relationships we hold with providers, and the transparent, robust approach to annual uplifts that is in place.
- Camden will continue to:
 - Raise any issues or concerns about the cost of care, including the impact of changes to National Insurance contributions, with sub-regional colleagues in North Central London, regional colleagues in Greater London, and through engagement with the Local Government Authority and the Association of Directors of Adult Social Services;
 - Emphasise the importance of cross-party talks on social care funding;
 - Actively contribute to consultation on funding related to social care to ensure that market sustainability is reflected in government's review of the Better Care Fund from 2026/27; and
 - Offer Camden's active engagement in the commission led by Louise Casey for the development of a new national strategy for adult social care, with its aim to deliver long-term, sustainable solutions for local authorities and our diverse market of providers.

3. To consider the following motion, notice of which was given by Councillor Steve Adams and which was seconded by Councillor Andrew Parkinson

This Council notes that it is important to support local businesses throughout the borough but that this must be done in a financially sustainable manner and with the agreement of local residents. The Queens Crescent street market roadway scheme is an example of how this support should **NOT** be given.

The 120 metres of the street market is in the process of being decorated with curlicue granite embossment of the ground surface and raised granite planters. A Freedom of Information request has unearthed the outrageous costs for this scheme.

The projected end total would seem to be around £3.5M and the current expenditure stands at £1.6M. Of this, designers and project managers have been paid some £600,000. Any calculation of the percentage of non-productive cost of the building contract of £2.0M shows an unjustifiable figure over 28%. And this is not a complicated house building project or a highly technical laboratory. It is a short market road in Gospel Oak.

It is understood that the granite has been brought over from Eastern Europe and the bill for it so far is approaching £0.5M.

Yes, the market has long needed a boost but is this the correct way to help locals or businesses? There are signs in shops rebutting this conception and many local residents and businesses are stunned and even offended.

Notwithstanding the fact that £2.0M of the funds for this project have been from the Greater London Authority's Good Growth by Design fund, this is still public money and it is not being spent wisely.

Therefore this Council commits to:

- Ensuring far more responsible assessment of public road schemes and the setting up of a cross-party panel to logic check such proposals before they are given the go ahead.
- Ensuring that, while it is too late to save the money spent or committed to this scheme, in times of tightened belts, such extravagances should be curtailed in the future.

RESPONSE BY THE CABINET MEMBER FOR PLANNING AND A SUSTAINABLE CAMDEN

Camden invests in its communities. The need for improvements to Queen's Crescent to support walking and cycling and reduce traffic volumes and speeds was first identified in 2016 via the Gospel Oak Regeneration consultation. Improved street environment, shop fronts and better lighting were also highlighted as local priorities, along with more seating, signage and public art.

To meet this local need the Council bid for and won funding of £1.9 million for public realm improvements to Queen's Crescent, West Kentish Town, and the surrounding areas. In line with Camden's commitment to investing in the public realm to improve communities, this investment contributes to transforming Queens' Crescent streetscape into a more pedestrian-friendly area, enhancing the local environment with planting and more seating and supporting economic sustainability.

The Council is committed to working with local residents, businesses and the wider community and between November 2018 to May 2019, a 6-month co-design process took place with the community to develop a new, refreshed public realm for Queens' Crescent. This co-design work included:

- On-street exhibition and themed 'radio' discussions about concept proposals.
- Drop-in meeting for TRA members and residents.
- Walk-around visit to precedent project for ward councillors.
- De-brief workshop with local community researchers.
- Prototyping day with drop-in guided walk around on-street tests.
- Podcast available online and in the library - edited highlights of interviews, discussions and design feedback from local people - telling the story of the co-design process

Following the consultation, an initial outline design for a scheme of public realm improvements on Queen's Crescent was developed incorporating additional planting, structural buildouts, raised tables to slow traffic, lighting and infrastructure to support the market.

During the community co-design, traffic issues were highlighted as a particular concern, and so opportunities to address traffic concerns were explored on a wider scale, including partial closures, a one-way system, or measures to make the market day arrangements more permanent by creating a pedestrian zone.

An 18-month trial traffic scheme was introduced to test a less traffic dominated streetscape aimed at improving pedestrian access and improving local air quality.

Following an initial consultation which saw more than 7,000 postcards distributed to the local area alongside street notices, posters, and public events, 49% of respondents agreed with the proposed pedestrian zone with 43% against. A series of design changes were made to respond to concerns raised during the consultation.

A final full public consultation took place in Spring 2022. Good levels of support were received for the majority of the final proposals which included design changes based on feedback received during the trial period. 44% of the respondents to the final consultation either strongly agreed or agreed that Queen's Crescent is currently a pleasant place to visit/shop/spend time, compared to those that either strongly disagreed or disagreed (33%). This compared to only 34% of respondents to the 2021 (pre-trial) consultation either strongly agreeing or agreeing that Queen's Crescent is currently a pleasant place to visit/shop/spend time – i.e. an increase of 10% points at final consultation stage compared to before the scheme was introduced.

This Council ensures that public realm investment supports Camden's diverse communities, being shaped by all voices within our communities. We trial and test approaches and adapt schemes from our learning and commit to building a public realm which is accessible for all, vibrant and attractive and adapted to meet the challenge of climate change.

ENDS

APPENDIX B

RESPONSES TO WRITTEN QUESTIONS FROM COUNCILLORS

QUESTION 1

TO THE: CABINET MEMBER FOR SAFER COMMUNITIES

BY: COUNCILLOR NANCY JIRIRA

Please provide a month-by-month breakdown of the number of people sleeping rough in Camden over the last 12 months, including a comparison with the data over the year before that. If this can be provided on a ward-by-ward basis, please do so. If not, please explain why?

Please also provide borough-level data for Camden's neighbouring boroughs (Barnet, Haringey, Islington, Westminster, Brent).

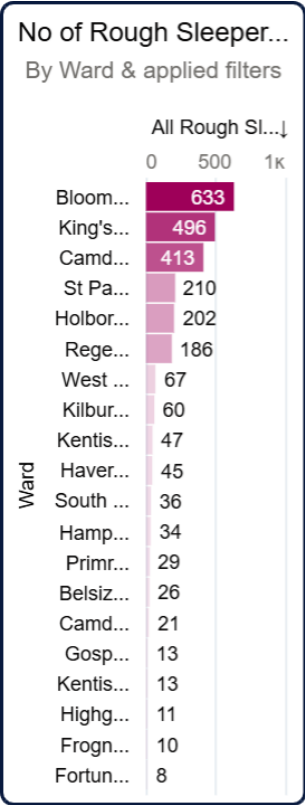
REPLY

Homelessness is a cruel stain on our community and our We Make Camden Missions are firm in our vision to end rough sleeping so that "everyone in Camden should have a place they call home".

Rough sleeping tends to be higher in central London boroughs where there are major transport hubs into London. Camden's proximity to some of the largest national and international travel hubs means we see an increased level of rough sleepers-especially when our previous Government evicted Asylum Seekers from their hostels in 2024. This coupled with; amplified poverty due to the increased cost of living, a lack of affordable housing, and relentless rise of rents has left so many with no choice but to sleep rough.

Rehousing is no simple matter when many of our homeless residents have highly complex needs. Our multi-agency approach, dedicated outreach team (Routes off the Street) and commissioned services continue to work tirelessly to navigate these immense challenges fulfil our duties.

Camden Ward Break Down:



Camden :

2023		2024		2025	
Month	No.	Month	No.	Month	No.
January	77	January	111	January	147
February	66	February	176	February	122
March	105	March	126	March	134
April	76	April	121	April	
May	99	May	149	May	
June	108	June	127	June	
July	134	July	140	July	
August	125	August	123	August	
September	102	September	103	September	
October	127	October	163	October	
November	165	November	189	November	
December	128	December	109	December	

Westminster:

2023		2024		2025	
Month	No.	Month	No.	Month	No.
January	262	January	427	January	496
February	312	February	218	February	382
March	384	March	456	March	528
April	190	April	275	April	
May	370	May	447	May	
June	141	June	300	June	
July	348	July	499	July	
August	185	August	303	August	
September	416	September	553	September	
October	240	October	375	October	
November	501	November	627	November	
December	193	December	284	December	

Barnet:

2023		2024		2025	
Month	No.	Month	No.	Month	No.
January	24	January	31	January	30
February	16	February	26	February	21
March	20	March	33	March	14
April	21	April	35	April	
May	26	May	38	May	
June	26	June	29	June	
July	53	July	34	July	
August	33	August	38	August	
September	25	September	45	September	
October	25	October	28	October	
November	24	November	26	November	
December	23	December	21	December	

Brent:

2023		2024		2025	
Month	No.	Month	No.	Month	No.
January	40	January	73	January	86
February	40	February	60	February	73
March	58	March	68	March	87
April	40	April	42	April	
May	47	May	80	May	
June	67	June	72	June	
July	52	July	99	July	
August	62	August	98	August	
September	52	September	90	September	
October	58	October	63	October	
November	59	November	75	November	
December	66	December	66	December	

Haringey:

2023		2024		2025	
Month	No.	Month	No.	Month	No.
January	32	January	61	January	65
February	33	February	64	February	37
March	50	March	84	March	32
April	45	April	64	April	
May	67	May	58	May	
June	79	June	97	June	
July	98	July	42	July	
August	64	August	54	August	
September	87	September	63	September	
October	66	October	62	October	
November	86	November	55	November	
December	64	December	35	December	

Islington:

2023		2024		2025	
Month	No.	Month	No.	Month	No.
January	31	January	63	January	57
February	29	February	54	February	50
March	33	March	52	March	56
April	28	April	54	April	
May	41	May	57	May	
June	21	June	75	June	
July	32	July	82	July	
August	40	August	66	August	
September	56	September	76	September	
October	54	October	75	October	
November	62	November	79	November	
December	54	December	43	December	

Southwark:

2023		2024		2025	
Month	No.	Month	No.	Month	No.
January	49	January	85	January	90
February	46	February	67	February	91
March	56	March	74	March	87
April	56	April	95	April	
May	71	May	87	May	
June	27	June	79	June	
July	19	July	91	July	
August	44	August	105	August	
September	109	September	107	September	
October	108	October	100	October	
November	102	November	99	November	
December	67	December	77	December	

QUESTION 2

TO THE: CABINET MEMBER FOR BETTER HOMES

BY: COUNCILLOR STEVE ADAMS

The Chalcots recladding contract has been beset with problems. The latest is the embarrassment that as many as half the glazing panes have been incorrectly installed or fabricated.

Following national media coverage, all this has been accepted by the Project Manager however this will inevitably negatively impact residents.

The two most pressing questions to be asked and answered immediately are:

Why didn't the Camden Quality Inspectors spot this mistake, leaving it to diligent residents to expose this?

Why didn't Camden's noted Architects and Quantity Surveyors pick this up at once, not after so many windows had been incorrectly fitted?

REPLY

There are two contracts in place for the Chalcots. These contracts are to remove the old curtain wall and windows, and to install an A1 fire rated façade which has been independently tested, along with associated internal works (e.g. to heating systems).

One contract covers Blashford and is being delivered by John Graham construction, this contract is not affected by the glazing issue. The second contract for the four larger towers is with McLaren. McLaren have two main sub-contractors – Alumet and Middlesex. These sub-contractors are responsible for assembly of the glazing units.

- Middlesex cover Taplow and Burnham – no issues identified – the manufacturer clearly places a sticker on the inner pane for installers to follow.
- Alumet cover Bray and Dorney – this is where the issue has occurred. The installers use the kite mark location to guide orientation and this is where the manufacturer caused confusion by changing the location of the kitemark without updating instructions to installers.

The issue was identified by the Council's site-based project team as part of a detailed review of glazing and heating performance as the scheme nears completion.

McLaren accepted responsibility in full and are putting resources in place to remedy Bray by the end of May and Dorney by the end of June. McLaren will offer compensation to affected households and has made changes to their quality assurance processes and personnel.

How the issue was identified

The Project Director asked Arup to provide assurance on the heating and glazing performance on flats where works were completed. This followed concerns raised by resident representatives on the performance of the heating system. The Project Director commissioned heating assessments and checks on window hinges and trickle vents for possible drafts/heat loss. Heating assessments determined radiator outputs were generally sufficient, providing boilers and pipework were configured correctly, and further checks were commissioned for the façade. This included detailed checks of windows and glass with an engineer visiting 10 January 2025.

Based on initial observations, the Project Director requested a further detailed glazing assessment from Arup and the assessment was arranged for a sample of flats on 20 January 2025 and 10 February 2025 and findings were issued 24 February 2025. The findings showed the glazing orientation issue primarily affected Bray and Dorney, with only a very small number of windows at Burnham and Taplow affected (where McLaren had utilised Alumet windows in the TRA room and at a couple of homes).

The Project Director shared the findings with Camden Council and raised concerns with McLaren. The Project Director requested further checks from outside from the scaffold at Dorney and Burnham by early March.

The first set of queries about the glass from residents (2 TRA representatives at Bray) came to the Project Director 26 February 2025 and they met both residents 6 March 2025.

The Project Director met with the resident panel on 11 March to share the findings and arranged letters to advise residents for issue on 12 March 2025.

Role of Camden's Quality Inspectors

The role of the Quality Inspectors is to ensure the fire stopping is correctly installed for both the various cladding system elements (across 11 "hold" points) and before and after the installation of the new window frame (6 hold points, including concrete structure upon removal and prior to installing the new window frame, bracket installation, fire stopping – correct compression, Torque test to outer fixings, etc).

The Quality Inspectors also check on the window operation and heating systems upon completion of the works in each home.

The inspectors have access to specialist support from the consultant contract administrators (Arcadis) and the Council's appointed façade engineers (Arup).

In addition, the Council has the "Multivista" system documenting the façade build up in detail over time so that the Council has photographic evidence of how the façade is being constructed.

The glazing orientation has been added as an additional hold point – noting that this is strictly a manufacturing issue and McLaren are wholly responsible.

QUESTION 3

TO THE: CABINET MEMBER FOR BETTER HOMES

BY: COUNCILLOR PATRICIA LEMAN

Survivors of Domestic Abuse can now access our new housing support handbook which has been co-produced with the women from Camden Voices Against Abuse Group. Can the Cabinet Member tell us why this initiative was necessary and whether there has been any feedback on how it is working to help residents at one of the most difficult periods in their lives?

REPLY

Domestic abuse is a high harm, high volume crime that remains largely hidden. An estimated 2.3 million people aged 16 years and over experienced domestic abuse in the year ending March 2024. Of these, 1.6 million were women and 712,000 were men ([ONS, 2024](#)). Domestic abuse has profoundly traumatic and disruptive impact on the lives of survivors, their families, and communities.

Access to safe housing is a primary barrier for survivors attempting to leave abusive situations. Evidence from SafeLives found that over half of survivor's need support to help them stay in their own home or move to new accommodation ([SafeLives, 2018](#)). The links between domestic abuse and homelessness are clear: one in five women who have experienced violence become homeless, compared with just 1 percent of women who have not experienced violence ([Centre for Homelessness Impact, 2021](#)). 61% of homeless women and 16% of homeless men have experienced domestic abuse ([Crisis, 2014](#))([APPG for Ending Homelessness, 2019](#)). In Camden, approximately one in ten people that approach our homelessness prevention service disclose that their main reason for homelessness is domestic abuse.

Concerningly, national and local evidence highlights that domestic abuse is not only a leading *cause* of homelessness, but also a *consequence* of homelessness. The University of York found that 51% of homeless women that they surveyed in Camden reported that they had been subject to sexual violence or rape ([University of York, 2021](#)).

These stark insights underscore the necessity of a robust and integrated domestic abuse and housing support offer. To address this, the Council is working to achieve Domestic Abuse Housing Alliance (DAHA) accreditation. DAHA is a best-practice approach for how local authorities can respond to domestic abuse and is endorsed by the Domestic Abuse Commissioner. This will enable us to develop a framework for delivering housing support that is safety and survivor led.

A Housing and Domestic Abuse Policy is a requirement to achieve DAHA Accreditation. We decided to create the Policy through co-production with people with lived experiences of domestic abuse, homelessness, and housing insecurity. This work took place in two phases. In phase one we undertook 40 hours of semi-structured interviews with people with lived experience of VAWG (Violence Against Women and Girls), homelessness, and housing insecurity and key partner organisations. Our focus was on trying to reach under-represented survivor groups

and people that experience systemic marginalisation, such as those experiencing multiply-disadvantage and street homelessness. In phase two we established a Policy Steering Group with survivors' that had participated in phase one, this group helped to write, edit, and design every aspect of the work. With the steering group, we reviewed insights from phase one in order to build a picture of Camden's Housing DVA (Domestic Violence & Abuse) system and identify key areas that needed change. This enabled us to incorporate the voices and experiences of a much wider group of survivors into our co-design process, including those that were not able to engage with the steering group.

Through this review, we identified the need to embed a rights-based approach to housing support and to ensure that survivors are provided with clear, accessible information on our housing processes. To address this, we developed the Survivors' 'Know your Rights' Handbook that would accompany the DVA Housing Policy. The handbook includes essential information on housing support and pathways, so that anyone experiencing domestic abuse is aware of their housing and legal rights. Our intention with this work is captured powerfully by a survivor that participated in the work:

"When you're literally just about surviving while trying to keep everything together for your family; your home situation and stability is everything. Navigating that was not easy for me, and it turns out so many others. So, it made sense that we pour ourselves into creating a handbook so that anyone else facing a journey like ours has all the information to hand and can easily access it multiple times – if needed."

Launching the co-created DVA Housing Policy and Survivors' Handbook is a key milestone on our journey towards achieving Domestic Abuse Housing Alliance (DAHA) accreditation. This is supported by significant work to embed the DAHA framework. This includes:

- Developing and embedding a DVA Neighbourhood's Procedure which introduced new assessment and referral pathways, robust oversight and case management structures, and a mandatory Level 1 – 3 DVA training roll-out.
- Developing a Domestic Abuse 'Early Detectors' network for frontline caretaking, repairs, and property management staff. To date over 250 staff have been trained in this approach, with more training dates to follow.
- Recruiting two Domestic Abuse Complex Case Co-ordinator roles in the Homelessness and Neighbourhood Services.
- Embedding a DVA Homelessness Procedure which introduced new assessment and risk tools, robust oversight and case management structures, and a mandatory Level 1 – 3 DVA training roll-out.
- Establishing a DVA Points Assessment Panel to embed DVA expertise and provide structure and due process to the assessment of applications made for 'Group D: Violence and Harassment' points under the Allocations Scheme 2018. As of the 28th March 2025, the panel has reviewed 240 applications, with 208 cases awarded points and 86 cases successfully rehoused.
- Embedding perpetrator accountability, through establishing a Domestic Abuse Perpetrator Panel (DAPP), developing an in-house Perpetrator Intervention

Scheme, and delivering a large-scale roll out of “Confidence in Complexity: working with multiply disadvantaged perpetrators and survivors in homelessness settings”.

- Launching a channel, community-wide domestic abuse awareness campaign was launched entitled ‘**Know you’re not Alone**’. The campaign featured nine DVA awareness posters, digital communication across social media and the website, print, and an in-person workshop series.

Our work has received accolade and recognition: Camden was invited to present the work at a national panel on ‘The Importance of Survivor Voice in Housing’s Response to Domestic Abuse’ co-ordinated by DAHA. It has also received positive coverage in the Camden New Journal, following our external housing DVA communication campaign in March 2025.

Encouragingly, we have received positive feedback from people with lived experience of street homelessness with one person noting: *‘I wish I had something like this years ago...tells you it’s not your fault and there’s numbers to call’*.

We will continue to monitor and measure the impact of our work using both quantitative and qualitative methods to ensure that effective, trauma-informed housing support is accessible and being delivered to domestic abuse survivors.

QUESTION 4

TO THE: CABINET MEMBER FOR BETTER HOMES

BY: COUNCILLOR MATT COOPER

The recent news regarding the contractor, McClaren, incorrectly installing some windows on flats in the Chalcots has caused understandable concern for some residents, can the Cabinet Member for Better Homes please advise what is being done to remedy and review this?

REPLY

The glass being installed is of a high standard and is designed to reduce overheating in the summer months and to improve insulation levels as part of the new building envelope.

Through detailed reviews and checks commissioned by the Camden Project Team, the Council found that:

- Each glass panel of the glazing unit meets the specification.
- Some glazing panels have been installed in the reverse orientation, thus compromising the performance of the windows, especially relating to minimising overheating in the summer.

Further investigation highlighted that this issue applies to installations carried out by one of the two subcontractors working on the four larger towers and primarily relates

to installations at Bray and Dorney. A very small number of windows in Taplow and Burnham were affected.

The error was caused by a change in the kitemark position by the manufacturer and the instructions to installers not reflecting the change. Further detailed reviews are being completed to fully understand the root cause.

Actions being taken

Where the glazing unit has been installed in reverse, the remedial work is straight forward by simply repositioning the glazing unit into the correct position.

The windows have been designed to replace glazing from the inside without external support structure and this applies to the glazing remedial work too.

Instructions have been issued to McLaren to ensure that the remedial work achieves the same window quality, longevity and warranties as correctly installed new glazing and specific requirements are set relating to glazing unit replacement and gasket replacement as applicable.

As part of the remedial work, the glazing unit is professionally cleaned inside and outside, the area of work is well protected and the remedial work to the largest glass panel takes about 30 minutes totalling to no more than half a day for homes with a number of glazing panels in the reversed orientation.

The remedial work is carried out by a dedicated separate specialist glazing team so that the project progresses as planned to completion.

The programme for the remedial work commences at Bray as part of the aftercare visit to each home to ascertain any glazing remedial work, and is taking place broadly top down subject to resident availability and should be completed by the end of May.

The same approach takes place for the required remedial work at Dorney for installations up to 7 March 2025 and will be completed by the end of June.

For any new installations since 10 March, the Camden project team has added a new hold point and verifies the glazing orientation when checking the fire stopping with the new window installation.

There is no additional cost to the Council and additional resources to ensure as is installed correctly is covered by the contractor.

QUESTION 5

TO THE: CABINET MEMBER FOR HEALTH, WELLBEING AND ADULT SOCIAL CARE

BY: COUNCILLOR LIAM MARTIN-LANE

Recently, we celebrated the launch of Camden's Carers Action Plan. It is estimated that 1 in 10 LGBT+ people are unpaid carers. LGBT+ carers face additional challenges, experiencing bias and discrimination as well as feelings of social isolation and loneliness. Is there anything Camden can do to specifically offer support to unpaid carers who are LGBT+?

REPLY

Part of the recommissioning of the new unpaid carers support contract and development of the Carers Action Plan (<https://carersactionplan.camden.gov.uk/>) included an Equality Impact Assessment, the outcome of which indicated that carer support services had overall been successful at engaging with communities from various protected groups. However, it was identified that more work needs to be done in relation to data collection for LGBT+, religion/belief, and refugees/asylum seeker communities. It is recognised that, alongside typical challenges faced by all unpaid carers, LGBT+ unpaid carers in particular face additional challenges such as loss of aspects of their identity due to the demands of the caring role, isolation and loneliness, and experiences of bias and discrimination whilst accessing services. In response to this, a 12-month specialist pilot service was launched in February 2025, targeting improved identification and support for LGBT+ carers.

Camden LGBT+ Unpaid Carers Support (CLUCS), delivered by LGBT+ specialist support organisation Forum+, will identify and support LGBT+ carers, provide easily accessible advice and information that empowers informed decision making, organise free social events to reduce social isolation, facilitate monthly support groups to offer a safe space for people to talk things through and share experiences, and raise public awareness around the issues affecting unpaid LGBT+ carers.

Additionally, as part of the development of the overall accountability of the Carers Action Plan and ensuring unpaid carers voices are included in our carer related service design and delivery, a new Borough Partnership Carers Board is being established with its first meeting planned for April 2025. This Carers Board is going to ensure that responsibility for the Carers Action Plan is shared across all organisations within the Camden Borough Partnership, and that a whole systems approach is taken to respond to the diversity of carers within Camden. Forum+ are Board members, and we anticipate they will bring their expertise and insight to help influence and shape local implementation activity related to the Carers Action Plan and ensure we continue to reach and support LGBT+ carers, so we can learn to innovate in this area.

The Carers Action Plan's extensive co-production activities helped shaped the new model for Camden's commissioned carer support services, with local provider Camden Carers due to take forward the contract from April 1st 2025. Commissioned carers services, including CLUCS and Camden Carers, are regularly promoted across internal communication channels to reach practitioners supporting residents in the community, as well as on our external facing Adult Social Care website, Camden Care Choices (<https://camdencarechoices.camden.gov.uk/>). And in March 2025, during Camden's Adult Social Care's Practice Week, two spotlight sessions were held with services to inform social workers of available support, including for LGBT+ carers.

QUESTION 6

TO THE: CABINET MEMBER FOR FINANCE AND COST OF LIVING

BY: COUNCILLOR NANOUCHE UMEADI

Please could the Cabinet Member outline how many residents have benefitted from the Council Tax Support Scheme for 24/25, with a breakdown by ward?

REPLY

- 1.1 Approximately 22,100 residents currently benefit from our local Council Tax Support (CTS) Scheme. Around 16,000 of those residents receive 100% relief under our scheme which means they pay no council tax at all.
- 1.2 The table below shows our current live Council Tax Support (CTS) caseloads by ward as at March 2025.

Ward	Total claimants	Claimants getting full (100%) CTS	Percentage of claimants receiving full CTS
Belsize	531	423	79.66%
Bloomsbury	914	699	76.48%
Camden Square	945	674	71.32%
Camden Town	818	594	72.62%
Fortune Green	1,105	834	75.48%
Frognal	318	232	72.96%
Gospel Oak	1,509	1,102	73.03%
Hampstead Town	238	179	75.21%
Haverstock	1,666	1,162	69.75%
Highgate	974	709	72.79%
Holborn	1,435	1,014	70.66%
Kentish Town North	704	518	73.58%
Kentish Town South	1,157	828	71.56%
Kilburn	2,057	1,498	72.82%
Kings Cross	1,306	939	71.9%
Primrose Hill	1,063	808	76.01%
Regents Park	1,533	1,079	70.38%
South Hampstead	889	644	72.44%
St Pancras and Somers Town	1,937	1,335	68.92%
West Hampstead	1,010	775	76.73%
Totals	22,109	16,046	72.58%

QUESTION 7

TO THE: CABINET MEMBER FOR SAFER COMMUNITIES

BY: COUNCILLOR ANNA BURRAGE

We are seeing the numbers of Rough Sleepers increase across the borough. Our data shows us that in February this year 330 individuals were found to be rough sleeping which is 20% higher than in February 2024. Can the Cabinet Member tell us what support we offer to those that are experiencing street homelessness in Camden?

REPLY

Camden is one of the top Local Authority areas impacted by rough sleeping in London. Our central London location and proximity to national and international transport hubs makes us vulnerable to high levels of street activity and rough sleeping. We continue to work towards our We Make Camden Mission create a Camden where “Everyone in Camden has a place they call home”. To achieve this, we commission several services that support those currently or with a history of sleeping rough:

- **Route off The Streets (RTS)** service supports people experiencing rough sleeping. The service delivers a 7-day a week street outreach service and assessment hub based at the RTS Day Centre in Camden Town. RTS work in partnership with other relevant agencies in a multi-disciplinary way to provide interventions on the street, structured support and make appropriate referrals which diverts individuals away from the street and enables them to access the services they need. It is delivered by Change Grow Live (CGL)
- **Navigator service** is a six-person team shared with Islington. Each worker holds a case load of homeless people who have multiple disadvantage as such they face challenges with at least two of the following: poor mental and/or physical health; contact with the criminal justice system; substance misuse; homelessness; community isolation; and gender-based violence. The team provides intensive and long-term trauma-informed person-centred support to clients of the service. It is delivered by Single Homeless Project (SHP).
- **165 Rough Sleeper Hub** - 16 beds in Kings Cross for men and women. This service provides an immediate ‘off-the-street’ accommodation for a short stay and move on support. It is delivered by Single Homeless Project (SHP).
- **Camden Respite Rooms:** The Respite Rooms is 15-bed women only service that is delivered by Single Homeless Project in partnership with VCS organisations Women at The Well and Camden Safety Net. The service supports women who are rough sleeping and homeless who have experienced violence or abuse to find safety and rebuild their lives.
- **Finchley Multi-disciplinary Hub:** project commissioned in partnership with the North London Housing Partnership for people rough sleeping. Up to 12 beds for Camden referrals for short-medium term stays.

Camden also employs several specialist teams and posts that provide support and advice to people who are or have been sleeping rough including:

- **Connect Forward:** a team in Camden Council that support and advocate for clients with no local connection to the Camden;
- **Homelessness Prevention Advisor-** rough sleeping lead: a new role Homelessness Prevention Advice in a tailored way to people who are rough sleeping; and
- **Floating support:** a service that helps people sustain their tenancies in order to prevent them losing their tenancy and becoming homeless.

Adult Pathway: Camden has 682 bedspaces across 16 accommodation sites which form our supported housing pathway for single homeless people – it is one of the largest in London.

The offer of support is 24/7 across most of our hostels to support our more vulnerable residents who most often will have poor mental health, physical health or substance misuse needs – we are seeing an increase in multiple-disadvantage across our pathways. Around 15% of moves into the adult pathway come via our street outreach team, with the rest coming through statutory homelessness routes. We rely on our supported housing pathway as a vital path to settled accommodation for the large number of homeless single people coming through both statutory homelessness and rough sleeping routes.

We have worked closely with Ministry of Housing, Communities & Local Government (MHCLG) and GLA to secure grant funding under the Single Homelessness Accommodation Programme (SHAP) and develop 2 new specialist services for people rough sleeping, currently in mobilisation. In both schemes the support service is provided by SHP:

- A **Housing First** scheme in partnership with Notting Hill Genesis and Westminster City Council comprising of 30 units of accommodation 10 Camden Council acquisitions, 10 Notting Hill Genesis acquisitions and 10 Council general needs voids. This Housing First scheme will provide a social housing tenancy and the wrap around support needed by those with multiple disadvantage.
- **Gray's Inn Road:** 16 beds of off-the-street accommodation with a high level of support provided by Single Homelessness Project (SHP) at Gray's Inn Road. This is specifically designed for short stays with move-on included in the offer.

Partnerships

Camden has long history of health and social care partnerships within the homelessness and street services, which was strengthened after the pandemic when multi-disciplinary team working was essential to meet people's needs. Camden currently has several partnerships that support people who have rough slept such as:

- **Mental and Physical health.** NHS England funded a pilot for an integrated approach to pre-treatment for mental health, physical health and peer support in partnership with UCLH, Focus Mental Health, **Health Outreach Project (HOP)**. The service comprises a nurse and a psychologist to deliver enhanced

health services to vulnerable people with complex needs on the street. This pilot project was evaluated and deemed a successful model, therefore North Central London Integrated Care Board (NHS) are developing a homeless health system and have approved ongoing funding for this as an integral part of this system.

- **Multi-disciplinary Team (MDT)** in our hostel pathway: A team made up of a Social Worker and Nurses embedded in the hostel environment in partnership with UCLH and our Adult Social Care team.
- **Drug and Alcohol teams:** Camden Public Health commissioning Inroads and Change Grow Live (CGL) Substance Misuse Service drug and alcohol service. These teams work in partnership with RTS and carry out joint outreach and surgery and assessments in the RTS Hub. They also provide specialist drug and alcohol advice and services when needed.

Outcomes:

The outcomes delivered by the services described above vary according to the services delivered but include:

- Increased engagement with statutory services including physical & mental health & drug and alcohol.
- Sustaining tenancies and avoiding losing tenancies.
- Positive move-on from supported accommodation.
- Reconnecting people to their place of origin including abroad.
- One of the performance indicators that RTS is measured against is supporting people to move off the street. This quarter:

2024/5 Quarter 4 data	RTS referrals made to accommodation	Offers taken up
January	176	65
February	57	27

*January was high because there was a long period of cold weather resulting in Severe Weather Emergency Protocol (SWEP) when emergency accommodation was stepped up.

QUESTION 8

TO THE: CABINET MEMBER FOR BEST START FOR CHILDREN AND FAMILIES

BY: COUNCILLOR ROBERT THOMPSON

The Independent Inquiry into Child Sexual Abuse (IICSA) investigated safeguarding and child sexual abuse in three local authorities, and recommended improvements to safeguarding cultures.

Could the Cabinet Member outline:

1. How Camden Council has engaged with IICSA's reports on these investigations.
2. Actions taken or planned in response to IICSA's findings.
3. How the Council addresses race and equality and ensure the protection of Black, Asian, and Minority-Ethnic Children and Young People.

REPLY

1. How Camden Council has engaged with IICSA's reports on these investigations:

Camden Council has reviewed the findings and recommendations from the IICSA reports. The Council has participated in discussions and consultations to understand the implications of the reports and to identify areas for improvement in safeguarding practices.

2. Actions taken

The following actions have been taken:

- Inviting **The Lighthouse** (University College London Hospitals NHS Foundation Trust) to the Camden Safeguarding Children Partnership (CSCP) on 25th September 2024 to discuss the impact of its 'Barnahus' model, which provides a safe space to support children and young people, from 0-18, in their recovery from sexual abuse or exploitation.
- They are returning to the **Vulnerable Adolescents Strategy Group** - 2nd October 2025 with specific focus looking at cross-over to harmful sexual behaviour and exploitation in adolescents

The Lighthouse's Barnahus Model Provides a safe space for children and young people (ages 0-18) recovering from sexual abuse or exploitation and offers guidance and support with a child-centred approach, putting everything needed under one roof.

- Schools are offered training on understanding the impact of trauma from sexual abuse on pupils and staff, attended by 25 frontline staff in 2023-24.
- Multi-Agency Training Sessions on 'Thinking the Unthinkable – Multiagency Responses to Working with Child Sexual Abuse' for the 2024-25 training programme.
- **Healthy Relationships Programme:** Rolled out in all Camden secondary schools.
- The Designated Safeguarding Lead (schools) Forum - works with schools to inform them of best practice and supports raising awareness of child sexual abuse.

3. How the Council addresses race and equality and ensures the protection of Black, Asian, and Minority-Ethnic Children and Young People:

- Camden is dedicated to being an anti-racist organisation, as outlined in their strategic aims in the "We Make Camden" plan.
- There is continuous monitoring and analysis of data to identify and reduce disproportionate outcomes for children from Black, Mixed Race, and Asian backgrounds.

Key Data Insights:

- **Children Looked After (CLA):** 44% are Black or Black British, and 52% are male. Black and Mixed-parentage adolescents are overrepresented in the adolescents entering care.
- **Child Protection Plans:** Black children are more likely to enter care after multiple Child in Need and Child Protection plans.
- **Service Transition:** White and Mixed-parentage children are more likely to be stepped down from social care, while Black children are more likely to be stepped up from Early Help services.

Initiatives to Address Disproportionality:

- Anti-Racist and Anti-Oppressive Practice is embedded in the new relational practice framework.
- Disproportionality Training: Delivered by the Youth Justice Service to the leadership team.
- Connecting Families Team: Provides in-home support to prevent children from Black, Mixed parentage, and Asian backgrounds from entering care or to support reunification.
- National Reform Discovery Work: Rigorous data analysis and case-focused workshops to understand patterns of disproportionality.

Camden is actively working to eliminate inequality and disproportionate representation through strategic planning, data analysis, and targeted initiatives. The Annual Report of the **Camden Safeguarding Children Partnership 2023-24** explicitly addressed key issues including discrimination, adultification Bias, and disproportionality. This includes ensuring all learning and reviews consider race, ethnicity, religion and identity, and delivering training to partner agencies.

QUESTION 9

TO THE: CABINET MEMBER FOR HEALTH, WELLBEING AND ADULT SOCIAL CARE

BY: COUNCILLOR JAMES SLATER

With an estimated 64% of adults in England now overweight or obese, contributing to sickness and death and further exacerbating health inequalities, what is Camden

doing address this major public health challenge and support our residents to achieve and maintain a healthy weight?

REPLY

The health and wellbeing crisis linked to population levels of overweight and obesity has major impact on residents, communities, health and care services, workplaces, and the economy. National action remains very important, but there is good evidence that a basket of collective actions taken locally by a range of organisations can make a difference. Significant recent developments in weight loss drug therapy reinforce the importance of ongoing preventative action so that fewer people reach the point where treatment needs to be considered.

Camden has an ongoing Healthy Weight Acceleration Plan developed in 2024, overseen by a multi-agency leadership group and reporting to the Health & Wellbeing Board. Key areas for focused action include:

- enhancing the environment and services to further support healthy behaviours (such as eating well, being active, and drinking alcohol in moderation)
- enabling settings such as Family Hubs and schools to make further progress
- supporting populations with greater needs
- providing treatment and support options where clinically needed, and
- linking to action on addressing the wider determinants of health, including poverty experienced across our communities, and supporting mental wellbeing.

A recent deep dive on work with schools highlighted further progress, building on whole school approaches to food and physical activity and widespread engagement with the Healthy Schools programme. More than 3,000 children have a free breakfast every day through the Magic Breakfast programme in 24 of Camden's most deprived schools. A new school meals service starting this month has a stronger focus on pupil engagement and implementing Camden's enhanced school food standards. Free school meals have been provided to all pupils in primary schools since September 2023. In secondary schools a free fruit and vegetable break time offer is now in place and £500k Community Infrastructure Levy funding to improve the eating infrastructure is being taken up in six schools to improve convenience (more Grab and Go kiosks), redesign/overhaul the dining area, and/or provide all weather cover for queues. Camden's Food and Health Student Champions programme is returning at Hampstead School, with students trained and supported to run a campaign that aims to improve healthy eating behaviours. And new approaches to promoting physical activity through schools will feature in the Children and Young People Physical Activity Strategy, including how to best address the drop off in physical activity levels typically seen among teenagers, and particularly among teen girls. The inaugural Girls Active Festival led by Torriano Primary last month involved girls from primary and secondary schools in a range of enjoyable activities and has been identified as a national example of good practice.

A focus on supporting population groups with greater needs enables further action on health inequalities. For **residents from South Asian ethnic groups** the healthy weight needs assessment identified greater levels of need within these communities.

A tailored and more culturally competent version of the adult weight management service has been piloted and co-produced with Kings Cross Brunswick Neighbourhood Association. Significant funding from the Community Infrastructure Levy has also been secured to extend the Community Champions programme into Kings Cross ward from this month, and healthy weight support will be one of the focus areas. Tailored physical activity sessions are also being developed through the Council's leisure centres. For **people with Learning Disabilities**, the Learning from Lives and Deaths (LeDeR) report into the causes of avoidable deaths among people with learning disabilities flagged the impact of higher levels of overweight, as well as opportunities to promote healthy living. The Community Learning Disability Service have developed a healthy weight action plan which includes creating active communities, influencing the food environment, and rolling out training to all staff on hydration and nutrition. The service's "We Like to Move it Move it" programme started in January and has been popular and successful. We are looking to roll this out across our leisure centres this year.

Camden's response to the overweight and obesity public health challenge has been commended regionally. We are now developing Year 2 of the Healthy Weight Acceleration Plan to ensure further progress. The Plan works alongside Camden's Food Mission which aims to make system changes to enable residents to benefit from nutritious, affordable, and sustainable food.

QUESTION 10

TO THE: CABINET MEMBER FOR PLANNING AND A SUSTAINABLE CAMDEN

BY: COUNCILLOR LORNA JANE RUSSELL

Please could the Cabinet Member confirm?

1. How many bike hangars have been installed to date, both per ward and in total across Camden?
2. How many additional bike hangars are planned in the next financial year, both per ward and in total across Camden?
3. How many people are on the waiting list for bike hangars, both per ward and in total across Camden?
4. How spaces for bike hangars are fairly allocated to residents on the waiting list?

REPLY

- 1. How many bike hangars have been installed to date, both per ward and in total across Camden?***

Camden's commitment to providing facilities across the borough to support resident cycle ownership continues, enabling the shift to more active travel. Currently there

are 342 bike hangars across the borough. The ward breakdown of installed cycle hangars is listed below:

Ward	Hangars
Belsize	15
Bloomsbury	26
Camden Square	22
Camden Town	6
Fortune Green	11
Frognal	2
Gospel Oak	12
Hampstead Town	5
Haverstock	21
Highgate	25
Holborn and Covent Garden	19
Kentish Town North	19
Kentish Town South	22
Kilburn	15
Kings Cross	11
Primrose Hill	17
Regents Park	13
South Hampstead	27
St Pancras and Somers Town	26
West Hampstead	28
Total	342

2. How many additional bike hangars are planned in the next financial year, both per ward and in total across Camden?

There are 287 new cycle hangars planned for 2025/26, of which 77 are already approved for implementation. The ward breakdown for these planned bike hangars is provided below:

Ward	Planned for 2025/26
Belsize	32
Bloomsbury	7
Camden Square	6
Camden Town	16
Fortune Green	16
Frognal	2
Gospel Oak	13
Hampstead Town	16
Haverstock	18
Highgate	14

Holborn and Covent Garden	2
Kentish Town North	36
Kentish Town South	14
Kilburn	15
King's Cross	8
Primrose Hill	16
Regent's Park	4
South Hampstead	19
St Pancras and Somers Town	2
West Hampstead	31
Total	287

3. How many people are on the waiting list for bike hangars, both per ward and in total across Camden?

There are 7,076 people on the combined waiting lists for all cycle hangars in the borough. The ward breakdown for those on the waiting lists is shown below:

Ward	Residents on waiting list
Belsize	916
Bloomsbury	309
Camden Square	248
Camden Town	65
Fortune Green	312
Frognal	48
Gospel Oak	575
Hampstead Town	310
Haverstock	575
Highgate	334
Holborn and Covent Garden	85
Kentish Town North	443
Kentish Town South	358
Kilburn	166
Kings Cross	103
Primrose Hill	638
Regents Park	92
South Hampstead	859
St Pancras and Somers Town	32
West Hampstead	608
Total	7,076

4. How spaces for bike hangars are fairly allocated to residents on the waiting list?

All spaces are logged by the date of application and fairly allocated to the next person registered on the waiting list.

ENDS