

Key to symbols

General

- Site Allocations
- Fitzrovia Area Action Plan
- Euston Area Plan / Euston Opportunity Area
- Neighbourhood Plans Adopted
- Central London Area
- Blomsbury Campus Area
- Central Camden
- North Camden
- West Camden
- South Camden

Built Environment

- Locations where tall buildings may be an appropriate form of development
- Area A = Buildings over 30 metres
- Area B = Buildings over 40 metres
- Conservation Area
- Ancient Monument
- Archaeological Priority Area
- Tier I
- Tier II
- Tier III
- Designated Views
- Background Assessment Area
- Lateral Assessment Area
- Viewing Corridor

Water

- Source Protection Zones
- 1
- 2
- Secondary A Aquifer
- Counters Creek Catchment

Transport

- Local Plan Transport Safeguarding
- HS2 Phase 1 Safeguarding
- Safeguarded Area: Sub-surface
- Safeguarded Area: Surface
- Safeguarding Limits
- HS2 Homeowner Protection Zone
- Extended Homeowner Protection Zone 1
- Extended Homeowner Protection Zone 2

Natural Environment and Open Space

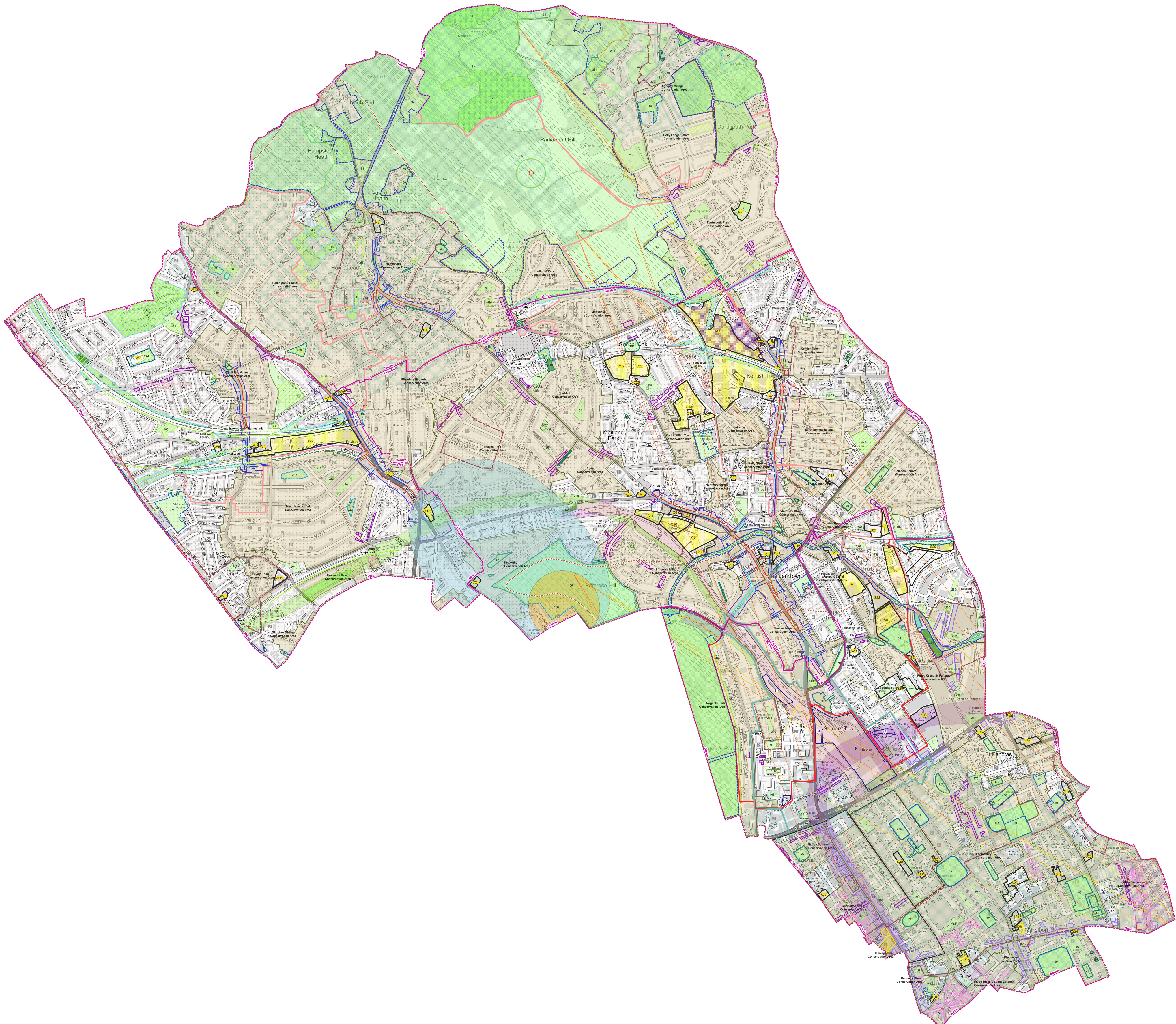
- Open Space
- Metropolitan Open Land
- Site of Special Scientific Interest
- Ancient Woodland
- Habitat Corridor
- Green Corridor - (Existing)
- Green Corridor - (Missing)
- Regent's Canal
- London Squares
- Local Green Space
- Registered Historic Park Or Garden
- Allotment
- Local Nature Reserve
- Sites of Importance for Nature Conservation
- Borough Grade I
- Borough Grade II
- Local
- Metropolitan

Employment and Retail

- Industry Area
- Hatton Garden Jewellery Industry Area
- Local Plan Centres
- CAZ Retail Cluster
- Town Centre
- Neighbourhood Centre
- Specialist Centre
- Local Plan Frontages
- Primary
- Secondary
- Sensitive

Waste and Minerals

- Aggregate Safeguarding
- Waste Safeguarding



Schedule of Local Plan open space and other natural environment designations

Natural environment designations include:

- Metropolitan Open Land (MOL);
- Site of Special Scientific Interest (SSSI);
- Ancient Woodland;
- London Squares;
- Registered Historic Park or Garden;
- Allotment;
- Local Nature Reserve (LNR); and
- Site of Importance for Nature Conservation (SINC).

Number	Open Space designations	Other Natural Environment designations
1	Heath Street Shrubbery	London Squares
2	High Street Shrubbery	London Squares
3	Gospel Oak Churchill SNI	SINC Borough Grade 1
4	Gospel Oak Gantry SNI	SINC Borough Grade 1
5	Gospel Oak Depot SNI	SINC Borough Grade 1
6	Gospel Oak Station Wood	SINC Borough Grade 1
7	Gower Gardens, University College London	
8	Gray's Inn Square	London Squares; Registered Historic Park or Garden
9	Greville Place Nature Reserve	SINC Local
10	Hampstead & Cumberland Clubs	
11	Hampstead Parish Churchyard	SINC Borough Grade 1
12	Hampstead Square Gardens	
13	Highgate Reservoir	
14	Hillfield Court Gardens	
15	Haversham Place private open space	
16	Holly Lodge Gardens	SINC Local
17	Medley Road Orchard	SINC Borough Grade 1
18	La Sainte Union School Grounds	
19	Lincoln's Inn	
20	Malet Street Gardens	
21	Mansfield Club Grounds	
22	Montague Bedford Gardens	
23	Mortimer Terrace Nature Reserve	SINC Borough Grade 1
24	New Square, Lincoln's Inn	London Squares
25	Old Buildings, Lincoln's Inn	London Squares
26	Old Square, Lincoln's Inn	London Squares

Number	Open Space designations	Other Natural Environment designations
27	Oriel Place Garden	
28	Palmerston Road Open Space	
29	Parkhill Chapel	
30	Queen Square Garden	London Squares
31	Railway Embankment, Medley Road	SINC Borough Grade 1
32	Railway Embankment, Broomsleigh Street	SINC Borough Grade 1
33	Railway Embankment, Kentish Town Junction	SINC Borough Grade 1
34	Railway Embankment, Netherwood Street	SINC Borough Grade 1
35	Railway Embankment, Oak Village	SINC Borough Grade 1
36	Railway Embankment, Westbere Road	SINC Borough Grade 1
37	Railway Embankments, Hampstead Heath	MOL; SINC Metropolitan, Borough Grade 1
38	Regents Park Terrace	London Squares
39	Ridgemount Gardens	
40	Rochester Square	London Squares
41	Sarre Minster Open Space	
42	SNCI Between Tracks west of WE Lane	SINC Borough Grade 1
43	SNCI r/o Fordwych Road	SINC Borough Grade 1
44	SNCI r/o Iverson Road (N East)	SINC Borough Grade 1
45	SNCI r/o Iverson Road (S west)	SINC Borough Grade 1
46	SNCI west of WE Lane	
47	South Square	London Squares; Registered Historic Park or Garden
48	Spedan Close Gardens	SINC Borough Grade 1
49	St Andrew's Gardens	SINC Local
50	St Georges Terrace	London Squares
51	St Katherine's Precinct	Registered Historic Park or Garden
52	St Martin's Garden	SINC Local
53	The British Library Forecourt	
54	Torriano Open Space	
55	Torrington Square	
56	Tower Court Gardens	
57	Wadham Gardens	London Squares
58	West Heath Lawn Tennis Club	
59	Regent's Park	MOL; Registered Historic Park or Garden; SINC Metropolitan

Number	Open Space designations	Other Natural Environment designations
60	Waterlow Park	MOL; Registered Historic Park or Garden; SINC Metropolitan, Borough Grade 1
61	Athlone House	MOL; SINC Metropolitan
62	Beechwood	MOL; Allotment; SINC Metropolitan, Borough Grade 2
63	Fairseat	MOL; Registered Historic Park or Garden; SINC Borough Grade 1
64	Garden of Heath House	MOL; SINC Metropolitan
65	Garden of Summit Lodge	MOL; SINC Metropolitan
66	Gardens adjacent to Vale of Health Pond	MOL; SINC Metropolitan
67	Hampstead Heath Cricket Field	MOL; SINC Metropolitan
68	Highgate Cemetery (East)	MOL; Registered Historic Park or Garden; SINC Metropolitan, Borough Grade 1
69	Highgate Cemetery (West)	MOL; Registered Historic Park or Garden; SINC Metropolitan
70	Inverforth House/The Hill	MOL; Registered Historic Park or Garden; SINC Metropolitan
71	Manor Cottage garden, Vale of Health	MOL; SINC Metropolitan
72	North Fairground Site, Vale of Health	MOL
73	School Playing Field, Highgate	MOL; SINC Metropolitan
74	Terrace Reservoir	MOL
75	The Elms, Spaniards End	MOL; Registered Historic Park or Garden; SINC Metropolitan
76	Kenwood Ancient Woodland	MOL; SSSI; Ancient Woodland; Registered Historic Park or Garden; SINC Metropolitan
77	Regent's Canal	MOL; Registered Historic Park or Garden; LNR; SINC Metropolitan
78	Keats & Downshire Gardens	
79	Swiss Cottage Public Open Space	
80	Euston Square Gardens	London Squares
81	Bromwich House Gardens	
82	Castlehaven Community Park	
83	Mill Lane (no. 160)	SINC Local
84	Three Acres Community Play Project	
85	Mecklenburgh Square Gardens	London Squares; Registered Historic Park or Garden; SINC Local
86	Parliament Court Gardens	SINC Borough Grade 1

Number	Open Space designations	Other Natural Environment designations
87	Branch Hill site 1	SINC Borough Grade 1
88	Branch Hill SNI 4	SINC Borough Grade 1
89	Branch Hill site 2	SINC Borough Grade 1
90	Heath-Edge Gardens, Parliament Hill	MOL; SINC Metropolitan
91	Coram's Fields	London Squares; Registered Historic Park or Garden; SINC Local
92	Hampstead Heath Woods SSSI	MOL; SSSI; Ancient Woodland; Registered Historic Park or Garden; SINC Metropolitan
93	Kenwood Estate	MOL; SSSI; Ancient Woodland; Registered Historic Park or Garden; SINC Metropolitan
94	North Wood	MOL; SSSI; Ancient Woodland; Registered Historic Park or Garden; SINC Metropolitan
95	Christchurch Passage Open Space	
96	Cumberland Market	
97	Chester Terrace	Registered Historic Park or Garden
98	Gray's Inn Gardens	London Squares; Registered Historic Park or Garden
99	College Lane Open Space	
100	Former King's College Campus	SINC Borough Grade 2
101	Railway Embankment, Agar Grove	SINC Borough Grade 2
102	Agar Grove Open Space	SINC Borough Grade 2
103	North London Line	SINC Borough Grade 2
104	St Pancras Gardens	Registered Historic Park or Garden; SINC Borough Grade 2
105	Primrose Hill Open Space	MOL; Registered Historic Park or Garden; SINC Borough Grade 2
106	Barrow Hill Reservoir	MOL; Registered Historic Park or Garden; SINC Borough Grade 2
107	Alexandra Road Park	Registered Historic Park or Garden
108	Amphill Square	London Squares
109	Argyle School Community Garden	
110	Argyle Square	London Squares
111	Bell Moor	
112	Bloomsbury Square Gardens	London Squares; Registered Historic Park or Garden;
113	Branch Hill Site 3	Allotment; SINC Borough Grade 1
114	British Museum Grounds	

Number	Open Space designations	Other Natural Environment designations
115	Broadhurst Copse	
116	Brookes Market Open Space	
117	Brunswick Square Gardens	London Squares; Registered Historic Park or Garden; SINC Local
118	Burlington Court Triangle	
119	Pond Square	London Squares
120	Calthorpe Project	SINC Local
121	Camden Square Gardens	London Squares
122	Camden Square Play Centre	London Squares
123	Camden Square Walkway	London Squares
124	St Paul's Chapel	
125	Canal Land (Baynes St to St Pancras Way)	SINC Metropolitan
126	Chalcot Square	
127	Chalton Street Open Space	
128	Clarence Square Gardens	
129	Clarence Way Open Space	
130	College Crescent	
131	Clarence Way Games Pitch	
132	Camden Gardens	London Squares
133	College Gardens	London Squares
134	Crabtree Fields	
135	Crown Close Open Space	
136	Lithos Road Playground	SINC Borough Grade 1
137	Frognal Court Wood	SINC Borough Grade 2
138	Elsworthy Road Enclosure	London Squares
139	Eton Avenue	London Squares
140	Falkland Place Open Space	
141	Falkland Lawn	
142	Flask Walk	London Squares
143	Fortune Green	Registered Historic Park or Garden; SINC Borough Grade 1
144	Fortune Green Play Centre	Registered Historic Park or Garden; SINC Borough Grade 1
145	Hampstead Cemetery	Registered Historic Park or Garden; SINC Borough Grade 1
146	Frederick Street Community Garden	
147	Goldington Crescent Gardens	London Squares
148	Hampstead Green	SINC Local
149	Harrington Square	London Squares
150	Highgate Enclosures	

Number	Open Space designations	Other Natural Environment designations
151	Grove Terrace Squares	London Squares
152	Three Points Park	
153	Hillfield Road Open Space	
154	Holly Bush Hill	London Squares
155	Islip Street Playground	
156	Iverson Road Open Space	
157	Keats' House Grounds	
158	Leighton Crescent Playground	London Squares
159	Lincoln's Inn Fields	London Squares; Registered Historic Park or Garden; SINC Local
160	Linstead Street Open Space	
161	Lismore Circus	London Squares
162	Maitland Park Enclosure	London Squares
163	Maygrove Peace Park	
164	Maygrove Peace Park (corner of)	
165	West End Green	London Squares
166	Maygrove Open Space	
167	Fleet Valley Pocket Park	
168	Munster Square	
169	Northways Corner	
170	Oakley Square	London Squares
171	Peace Garden	
172	Regent Square	London Squares
173	Rochester Place	
174	Rochester Terrace Gardens	London Squares; SINC Local
175	Russell Square Gardens	London Squares; Registered Historic Park or Garden; SINC Local
176	Phoenix Community Garden	SINC Local
177	Purchase Street Open Space	
178	Quex Road Open Space	
179	Red Lion Square	London Squares
180	South End Green	London Squares
181	South End Triangle	
182	South Grove Square	London Squares
183	The Grove Square	London Squares
184	Spaniards End	
185	Quex Road Playground	
186	Primrose Gardens	
187	St Benets Ground (b)	
188	St Benets Ground (a)	

Number	Open Space designations	Other Natural Environment designations
189	Sumatra Road Playground	
190	Talacre Town Green	SINC Local
191	Tavistock Square	London Squares; SINC Local
192	The Alf Barrett Playground	
193	The Dell	
194	The Warren	
195	Tolmers Square	
196	Westbere Copse	LNR; SINC Borough Grade 1
197	Jenny Wood Nature Reserve	LNR; SINC Borough Grade 1
198	SNCI r/o Westcroft Close	LNR; SINC Borough Grade 1
199	Kenwood Nursery	MOL; Registered Historic Park or Garden; SINC Metropolitan
200	Whitfield Gardens	
201	Wicklow Street Open Space	
202	Windmill Hill Enclosures	
203	Woburn Square	London Squares; SINC Local
204	Abbey Road Open Space	
205	Adelaide Road Nature Reserve	LNR; SINC Borough Grade 1
206	Adelaide Community Garden	
207	Antrim Road Allotments	Allotment
208	Antrim Grove Public Gardens	
209	Cumberland Market Playground	
210	Barnfield & Woodfield Open Space	
211	Beckington Open Space	
212	Southampton Row Gardens	
213	Bedford Square Gardens	London Squares; Registered Historic Park or Garden
214	Globe Lawn Tennis Club	LNR
215	Belsize Wood Play Area	
216	Belsize Wood Nature Reserve	LNR; SINC Borough Grade 2
217	Belsize Wood Open Space	LNR; SINC Borough Grade 2
218	Broadhurst Gardens Meadow	SINC Borough Grade 2
219	Fairhazel Open Space	
220	Compayne Open Space	
221	Canfield Greencroft Open Space	
222	Maryon Wilson Green Triangle	SINC Borough Grade 2
223	Goldhurst Open Space	SINC Borough Grade 2
224	Camden Street Playground	
225	Camley St Natural Park	LNR; SINC Metropolitan;
226	Cartwright Gardens	London Squares;
227	Chalcot Gardens	London Squares;

Number	Open Space designations	Other Natural Environment designations
228	Chaston Nursery School Grounds	SINC Local;
229	Collingham Nursery	Registered Historic Park or Garden; SINC Local;
230	Cumberland Terrace	Registered Historic Park or Garden
231	Dudley Court Gardens	
232	East Heath Open Space	
233	Fitzroy Farm & Heathfield Park	
234	Fitzroy Open Space	MOL; SINC Metropolitan
235	Holly Gardens	
236	South Grove Gardens	
237	Fitzroy Square	London Squares
238	Frognal Lane Gardens	SINC Local
239	Gainsborough Gardens	London Squares
240	Garden of 21A Heath Street	SINC Borough Grade 1
241	Garden of Friends House	
242	Gloucester Gate	Registered Historic Park or Garden
243	Gondar Gardens	SINC Borough Grade 2
244	Gondar Gardens Reservoir	SINC Borough Grade 2
245	Gordon Square Garden	London Squares; SINC Local
246	Railway Embankment, Carlton Road Junctio	SINC Borough Grade 1
247	Gospel Oak Cressfield SNCI	SINC Borough Grade 1
248	Gospel Oak Woodyard SNCI	SINC Borough Grade 1
249	Carlton Playing Court	
250	Gardens of Millfield Place	
251	Gardens of The Grove	
252	Witanhurst Gardens	
253	Garden of 36A Highgate West Hill	
254	Kentish Town City Farm	SINC Borough Grade 1
255	Gospel Oak Station SNCI	MOL; SINC Metropolitan, Borough Grade 1
256	Gospel Oak Ingestre SNCI	SINC Borough Grade 1
257	Gospel Oak Open Space	
258	Augustus and Redhill Allotments	
259	Doynton Street Open Space	
260	Acland Burghley School Sports Centre	
261	Marchmont Community Garden	
262	Granary Square	
263	St George's Nursery	SINC Local; Registered Historic Park or Garden
264	Railway Embankment, Rosemont Road	SINC Borough Grade 1

Number	Open Space designations	Other Natural Environment designations
265	Rosemont Community Garden	SINC Borough Grade 1
266	Battle Bridge Place	
267	King's Cross Square	
268	Pancras Square	
269	Handyside Gardens	
270	Harrison Street Wildflower Meadow	
271	Montpelier Play Centre	
272	Montpelier Gardens	
273	Bramber Green	
274	Kilburn Grange Park	SINC Local
275	Cantelowes Gardens	
276	Elm Village	
277	Lissenden Gardens	London Squares
278	St. Giles' Churchyard & Playground	SINC Local
279	St George's Gardens	Registered Historic Park or Garden ; SINC Local
280	Westfield	
281	Regent's Place	
282	Jane Evans Nature Reserve	SINC Borough Grade 1
283	The Elms, Fitzroy Park	MOL; Allotment; SINC Borough Grade 2
284	Fitzroy Park Alloments	MOL; Allotment; SINC Metropolitan, Borough Grade 2
285	Hampstead Heath	MOL; SSSI; Ancient Woodland; Registered Historic Park or Garden; Allotment; SINC Metropolitan, Borough Grade 1 and 2
286	Hawley Wharf	SINC Metropolitan
287	St Giles Square	
288	Centrepoint	
289	Lewis Cubitt Park	
290	Lewis Cubitt Square	
291	Gasholder Park	SINC Metropolitan
292	Alfred Place	
293	Princes Circus	
294	Polygon Road Dell	
295	Charrington Street	
296	Plot 10	
297	Agar Grove Estate	

Proposed Local Plan Site Allocations

Policy Reference	Site Name
S5	120-136 Camley Street
S6	104-114 Camley Street and Cedar Way Industrial Estate
S7	24 – 86 Royal college Street (Parcelforce and ATS Tyres Site)
S8	St Pancras Hospital
S9	Shorebase Access
S10	Bangor Wharf and Eagle Wharf
S11	Former Royal National Throat, Nose and Ear Hospital
S12	Belgrove House
S13	Former Thameslink Station, Pentonville Road
S14	Land at Pakenham Street and Wren Street
S15	Land to rear of the British Library
S16	Former Central St Martins College
S17	Selkirk House, 166 High Holborn, 1 Museum Street, 10-12 Museum Street, 35-41 Oxford Street and 16a-18 West Central Street
S18	135-149 Shaftesbury Avenue
S19	Cockpit Yard and Holborn Library
S20	York Way Depot and adjacent land at Freight Lane
S21	Agar Grove Estate
S22	6 St Pancras Way
S23	Tybalds Estate
S24	294-295 High Holborn
S25	156-164 Grays Inn Road
S26	8-10 Southampton Row
S27	Middlesex Hospital Annex, 44 Cleveland Street
S28	Central Somers Town
S29	Chalton Street, Godwin and Crowndale Estate
S30	Birkbeck College, Malet Street
S31	Senate House (NW quadrant) Malet Street
S32	20 Russell Square
C2	Regis Road and Holmes Road depot
C3	Murphy Site
C4	Kentish Town Police Station
C5	369-377 Kentish Town Road
C6	Kentish Town Fire Station
C7	Morrisons Supermarket
C8	Former Morrisons Petrol Filling Station
C9	100 Chalk Farm Road
C10	Juniper Crescent
C11	Network Rail land at Juniper Crescent
C12	Gilbeys Yard

C13	West Kentish Town Estate
C14	Hawkridge House
C15	Wendling Estate and St Stephens Close
C16	Shirley House
C17	Camden Town over station development
C18	UCL campus, 109 Camden Road
C19	Arlington Road former depot site
C20	Highgate Centre, Highgate Road
C21	Grand Union House, 18-20 Kentish Town Road
C22	Heybridge Garages, Hadley Street
C23	Former flats 121 – 129 Bacton, Haverstock Road
C24	52 - 54 Avenue Road
C25	5-17 Haverstock Hill (Eton Garages)
C26	160 Malden Road
C27	Land adjacent to Constable House, Adelaide Road
W2	02 Centre, car park, car showroom sites and 14 Blackburn Road
W3	11 Blackburn Road
W4	13 Blackburn Road
W5	188-190 Iverson Road
W6	Land to the rear of Meridian House
W7	Gondar Gardens
W8	88 - 92 Kilburn High Road
W9	Land at Midland Crescent, Finchley Road
W10	BP Petrol Station, 104a Finchley Road
W11	Abbey Co-op Housing site, Emminster and Hinstock
W12	100 Avenue Road
W13	551-557 Finchley Road
W14	317 Finchley Road
N2	Mansfield Bowling Club
N3	Queen Mary's House
N4	Hampstead Delivery Office

Site Allocation Plan 2013 - Saved Policies

Saved Policy Reference	Site Name
9	Euston Station, Euston Road
10	132-140 and 142 Hampstead Road
11	Granby Terrace
12	110-122 Hampstead Road
13	1-39 Drummond Crescent
14	Westminster Kingsway College
15	Goldsmith's House and adjoining land