

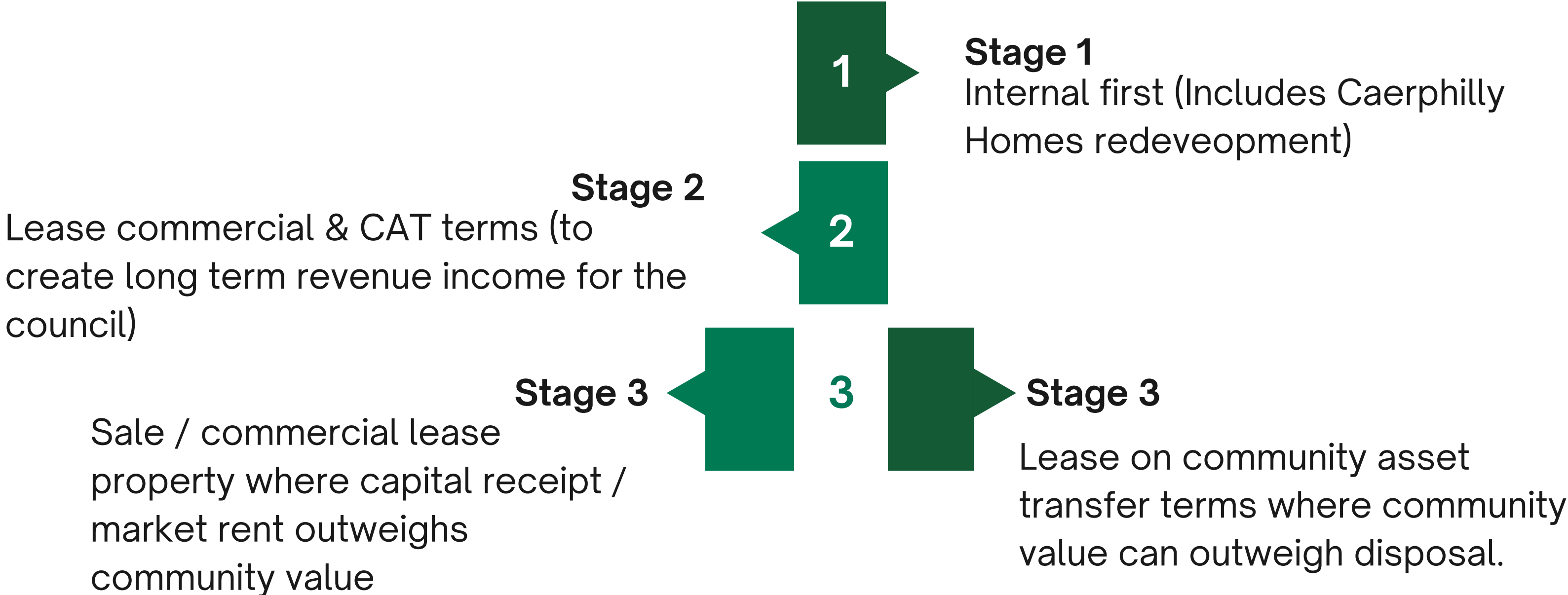
# Asset Disposal

Caerphilly County Borough Council



# How do we determine the future of a council asset?

Declared surplus by a Service following review by Corporate Landlord





Determine the best value



Financial

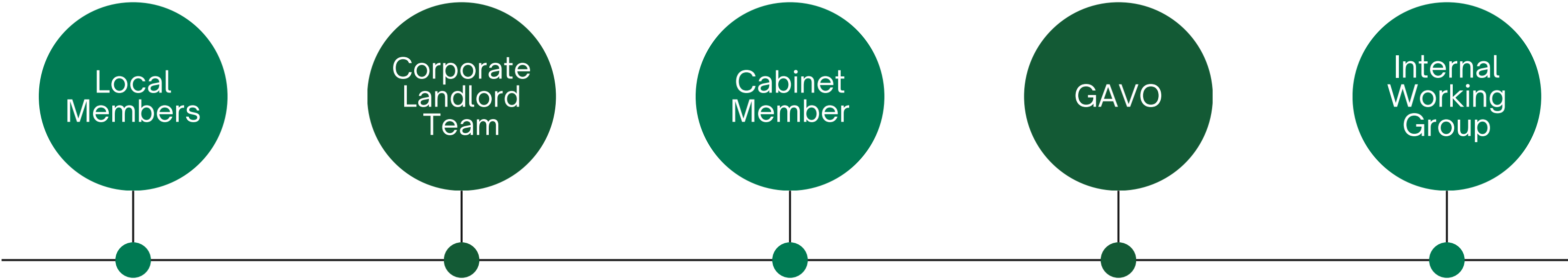


Community  
Benefit



# Initiating Community Asset Transfer

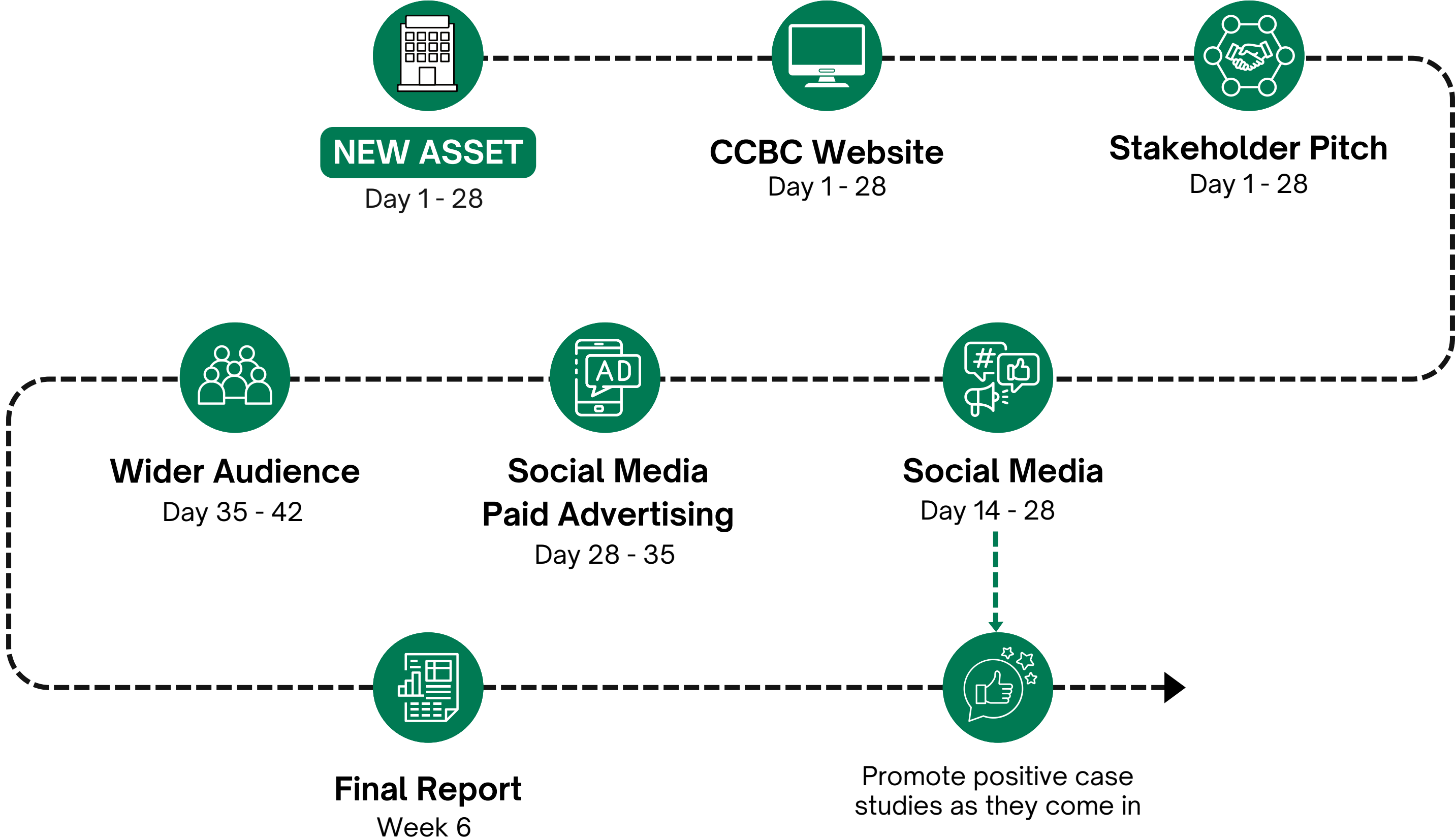
Consult informally with key stakeholders to gather insight and intelligence on a local level



Delegated decision process through Leadership Team for agreement to proceed to market

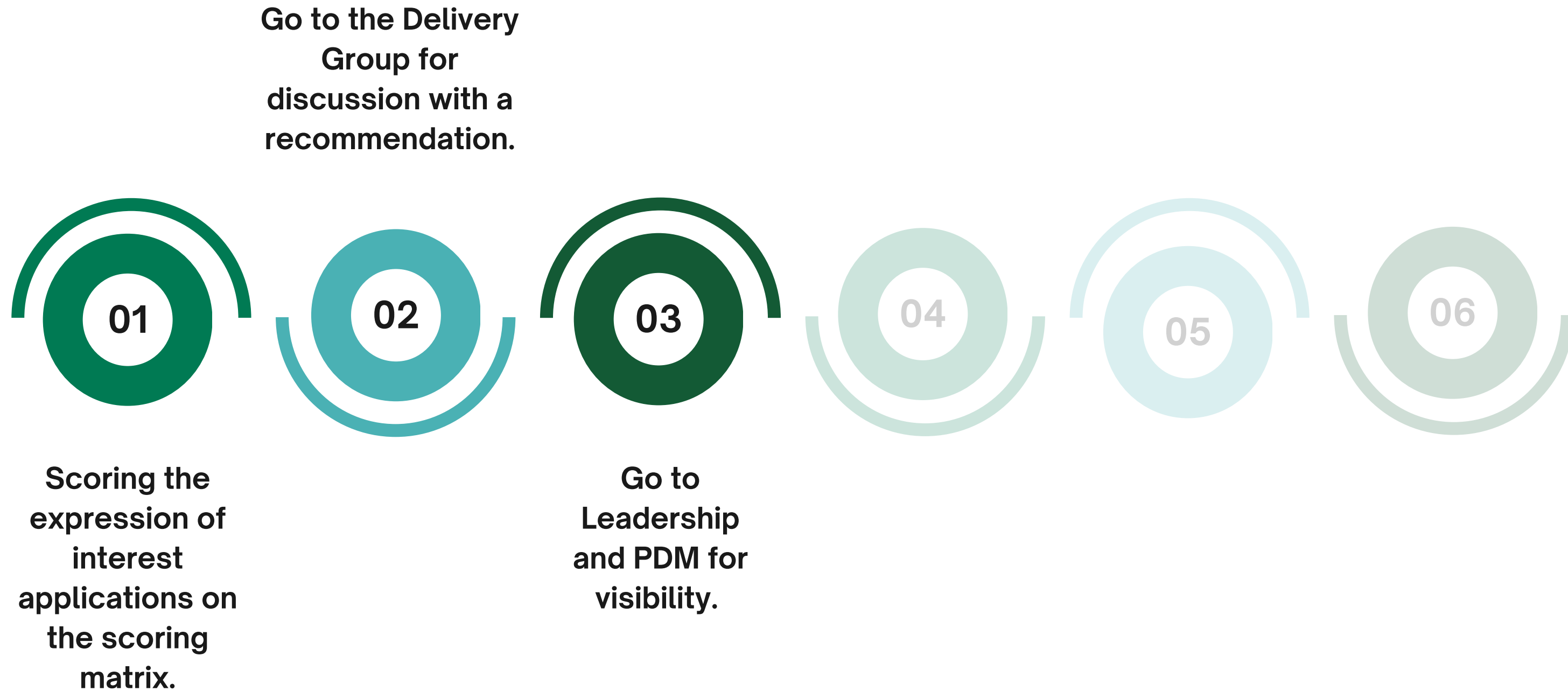


# Marketing the Asset



# Stage 1

## Application Process



# Stage 2

## Application Process





# Award

## Decision Making Process

